

June 2026

ANNOUNCEMENTS

THE WILMINGTON HOUSING AUTHORITY'S MONTHLY UPDATES



WHA MADISON GARDENS TOWNHOMES NO LONGER ACCEPTING APPLICATIONS

Madison Garden Townhomes is a low-income tax credit property owned and operated by Wilmington Housing Authority. Effective September 1, 2024, WHA will no longer be accepting preliminary applications. To check the status or make changes to existing applications or for questions regarding the application process, please contact the Management Office at 302-429-6700.

THE WILMINGTON HOUSING AUTHORITY OFFERS AUTOMATED MESSAGING TO RESIDENTS

The Wilmington Housing Authority now provides automated text messages and phone calls to residents. These automated messages allow residents to receive updates, notices, and other resources in real time.

INGLESIDE HOMES HAS IMMEDIATE OPENINGS

Ingleside Homes Retirement Apartments has immediate openings for studio and 1-bedroom apartments. Residents must be 62 years old or older. Monthly rent is 30% of monthly income and pays for all services at Ingleside, which includes:

- Three (3) meals daily
- Weekly housekeeping and maintenance
- 24-hour Security
- Life Alert Pendant
- All Utilities
- Social & Recreational Programs
- Social Services

For more information, contact Renata Maslowski at (302) 575-0250 ext. 2245.

WHA EXECUTIVE DIRECTOR RAY FITZGERALD HONORED WITH ANDREW TURNER AWARD

Wilmington Housing Authority (WHA) proudly celebrates Executive Director Ray Fitzgerald as the recipient of the prestigious Andrew Turner Award, presented during the 42nd Annual Fair Housing Observance & Award Luncheon hosted by Housing Opportunities of Northern Delaware, Inc.. Held on April 24, 2026, at the DoubleTree by Hilton Downtown Wilmington, this annual event brings together housing advocates, community leaders, and stakeholders committed to advancing fair housing across Delaware. The luncheon not only raises critical support for HOND's statewide initiatives, but also serves as a platform to recognize individuals whose leadership exemplifies a deep commitment to housing equity and access.

The Andrew Turner Award honors the legacy of Andrew Turner, a trailblazer in civil rights and fair housing advocacy. Mr. Turner's distinguished career spanned public service, law enforcement, and policy development, including his instrumental role in advancing Delaware's Fair Housing Law. As the first Chair of the Delaware Human Relations Commission and a lifelong advocate for equality, his legacy continues to inspire leaders dedicated to building inclusive communities. Receiving an award bearing his name reflects a profound recognition of leadership, integrity, and impact in advancing fair housing principles.

Under Mr. Fitzgerald's leadership, WHA has continued to strengthen its role as a cornerstone of affordable housing in Wilmington through strategic partnerships, innovative programming, and a steadfast commitment to resident success. His forward-thinking approach has expanded opportunities for low- to moderate-income families, while fostering collaborations that address housing stability and community development. This recognition underscores WHA's ongoing mission to provide safe, quality housing and to create pathways toward self-sufficiency. WHA extends its sincere congratulations and gratitude to Mr. Fitzgerald for his continued dedication to improving lives and building stronger, more equitable communities.



Pictured Above: Vincent White, Vice President of Delaware Affordable Housing Group, Gladys Spikes of HOND, Ray Fitzgerald, Executive Director of Wilmington Housing Authority and George E. Evans of HOND.



WHA CELEBRATES RIBBON CUTTING OF THE ONE STOP SHOP BOUTIQUE

Wilmington Housing Authority (WHA) is excited to announce the re-opening of the One Stop Shop Boutique, located on the first floor of the WHA Central Office. On Tuesday, May 5, the WHA team gathered for the official ribbon cutting of the newly renovated space. As Executive Director Ray Fitzgerald shared, "The Resident Services team showed practical leadership." The Resident Services Team worked in partnership with the WHA Development Team and contractor, JF Build, LLC, to bring the vision to life. Director of Development Andrew Johnson stated that "he and the team managed the project based on the Resident Services concept, and we were able to complete it in four weeks."

The One Stop Shop Boutique provides gently used business casual clothing, shoes, accessories, and more for WHA residents, clients, and program participants at no cost. Family Self-Sufficiency (FSS) Coordinator Jamila Jones shared that individuals "often need appropriate clothing for interviews. The One Stop Shop Boutique helps eliminate that barrier." The boutique was created to support residents and participants as they pursue employment, education, and self-sufficiency opportunities.

Rachel Surratte, Chief of Resident Services, stated that she is "most proud of being able to offer this resource to create confidence and dignity for the people we serve." WHA extends a sincere thank you to Executive Director Ray Fitzgerald, Director of Development Andrew Johnson, JF Build, LLC, Chris Booze of Second Chance Shoppe, Omarr Clark, Antoine Demby Sr., Rhiane Jones, Terrell Johnson, Kathi McGinnes, Princess Roane, Mark Surratte, James Smith, Carol Southall, Wes Southall, Cheryl Syndnor, Cheryl Watson, and WHA Maintenance Team members Al Spady and James Smith for their contributions in making this resource possible for the community.

Donations for both men and women of all sizes will be accepted year-round. Boutique hours are Tuesdays from 2:00 PM to 4:00 PM, Thursdays from 11:00 AM to 1:00 PM, or by appointment. For more information, contact Resident Services at residentservices@whadelaware.org.



BUILDING SUCCESS THROUGH OPPORTUNITY

The Wilmington Housing Authority is proud to celebrate the accomplishments of workforce development participants Tamir Collins and Joquan White, whose dedication and commitment have led to successful employment opportunities with WHA workforce development employer partner, JF Build LLC. Through participation in WHA's Lead Abatement Program, both individuals gained valuable hands-on experience and workplace skills that have helped position them for success in the construction and remediation industry. JF Build recently recognized both participants for their professionalism, strong work ethic, reliability, and positive contributions on project sites, noting their ability to work collaboratively, follow direction, and contribute to productive project outcomes.

According to JF Build Project Manager Nafis Jackson, Tamir consistently demonstrated dedication, teamwork, and a willingness to learn, while Joquan distinguished himself through his disciplined work ethic, dependability, and attention to detail. Their recognition highlights the impact that workforce development programs can have when participants embrace opportunities for growth and employers invest in developing emerging talent. JF Build expressed confidence in both individuals' continued professional advancement and commended WHA's efforts to cultivate skilled and motivated workers for the local workforce.

For Tamir Collins, the opportunity has been life-changing. "I am grateful for the opportunity to participate in the Lead Abatement Program and enjoy the new career path I have begun," he shared. Stories like those of Tamir and Joquan demonstrate the value of strong community partnerships and workforce training initiatives that connect residents with meaningful employment opportunities. WHA congratulates both participants on their achievements and looks forward to their continued success as they build rewarding careers in the skilled trades.

Those interested in partnering with or participating in Lead Abatement workforce development email wsouthall@whadelaware.org or call 302-647-9549.



Pictured Above: Joquan White



Pictured Above: Tamir Collins



ROSS ROADSHOW BRINGS RESOURCES DIRECTLY TO RESIDENTS

Wilmington Housing Authority's Resident Services Department is excited to introduce the new ROSS Roadshow Outreach Program, an initiative designed to bring valuable resources, supportive services, and community connections directly into WHA neighborhoods. The Roadshow will provide residents with opportunities to learn more about programs that promote self-sufficiency, financial empowerment, and pathways toward long-term stability, including the ROSS Homeownership Program.

Through the ROSS Roadshow, residents will have the opportunity to connect with Resident Services staff to receive information and guidance on improving credit, building savings plans, attending homebuyer education classes, meeting with financial coaches, and exploring down payment assistance

opportunities. The outreach effort reflects WHA's continued commitment to making resources more accessible and encouraging residents to take positive steps toward their personal and financial goals. Residents are encouraged to stop by during their community's scheduled Roadshow for resources, support services, workshops, and community connections.

The monthly ROSS Roadshow schedule is as follows:

- Compton: 1st Tuesday & Last Thursday
- Herlihy: 2nd Tuesday & 4th Thursday
- Baynard: 3rd Tuesday & 2nd Thursday
- Crestview: 4th Tuesday & 3rd Thursday
- Parkview: 5th Tuesday (held only during months with a 5th Tuesday) & 1st Thursday

Roadshow hours are scheduled from 12:00 PM - 1:30 PM. For additional information about the ROSS Roadshow or the ROSS Homeownership Program, residents may contact WHA Resident Services at residentservices@whadelaware.org or 302-269-9126.



WELCOME BRANDY MOORE, WHA'S NEW FINANCE DIRECTOR

Wilmington Housing Authority is pleased to welcome Brandy Moore as our new Finance Director. Brandy brings more than 15 years of accounting experience, with expertise in reconciliations, budget forecasting, nonprofit accounting, and investment accounting. Throughout her career, she has worked closely with executive leadership and governing boards to strengthen organizational operations, implement financial safeguards, and support mission-driven initiatives. Her passion for combining sound financial management with meaningful community impact made WHA a natural fit.



In her new role, Brandy is focused on strengthening policies and procedures that protect WHA's financial and physical assets while providing leadership with the data and insights needed to make informed decisions for the organization's future. She believes that strong financial management is essential to sustaining services, creating opportunities for growth, and ensuring long-term success for the residents and communities WHA serves. Outside of work, Brandy enjoys cooking healthy meals for her family, traveling, reading, and finding ways to give back to the community. We are excited to have her expertise, dedication, and leadership as part of the WHA team and look forward to the positive contributions she will make in advancing our mission.

WELCOME TO IMONIE CLEMENTS



Wilmington Housing Authority welcomes Imonie Clements to the team. Imonie joined WHA as the Communications & Procurement Administrative Assistant in April. She has over six years of experience working in housing. Her professional background includes administrative support, communications coordination, customer service, human resources, accounting, and organizational management. Imonie has always enjoyed working in roles that allow her to support teams, improve operations, and connect with people in meaningful ways.

Through her experience, Imonie developed a strong understanding of the importance of serving clients and residents with professionalism, empathy, and efficiency. What interested Imonie most about joining WHA is the opportunity to continue making a positive impact within the community while being part of an organization that values teamwork, service, and supporting residents and families.

Imonie is excited about the opportunity to work with the Communications and Procurement teams because she enjoys collaborative environments where she can support daily operations and contribute to meaningful work. Imonie hopes to bring professionalism, reliability, strong communication skills, and a positive attitude to the organization and those we serve. Outside of work, Imonie enjoys spending time with family, kickboxing, and focusing on personal growth and wellness.

FLYERS SPIRIT DAY BUILDS TEAM MORALE



Pictured Above Left to Right: Vicki Disabatino, Xavia Mills and Azsana Wing

As part of Wilmington Housing Authority's ongoing commitment to fostering a positive and engaging workplace culture, team members recently had the opportunity to show their Philadelphia Flyers pride by dressing in the team's signature colors for a special spirit day. Supported by WHA management, the event encouraged staff to enjoy a lighthearted moment of camaraderie while bringing energy and connection into the workplace. Activities such as spirit days help strengthen employee morale by creating opportunities for team engagement, workplace enjoyment, and shared experiences among colleagues. WHA continues to recognize the importance of maintaining a professional environment that also supports fun, wellness, and meaningful employee connection throughout the organization.

BLOOMING APPRECIATION

Wilmington Housing Authority (WHA) celebrated Mother's Day with a thoughtful and uplifting Flower Bar experience for mothers on staff. Team members were invited to create their own custom bouquets from a beautiful assortment of fresh flowers, adding a personal and joyful touch to the celebration. The Flower Bar was organized by Patti Mengers and Neela Word, and Doreen DeAngelis of Human Resources, whose creativity and care helped make the event a meaningful success. Reflecting on the celebration, Melody Taylor, Chief Operating Officer, shared, "Thank you for the care, thought, and innovation in honoring women today. This genuinely put a smile on many faces and was the subject of affirming conversations throughout the building." WHA is grateful for opportunities to recognize and celebrate the dedication, strength, and contributions of the mothers who help make the organization and community stronger each day.



Pictured Above Left to Right: Michelle Warner and Yvonne McKoy

DELAWARE'S FAIR & AFFORDABLE HOUSING CRISIS COMMUNITY TOWN HALL



The Delaware Division of Human and Civil Rights hosted Delaware's Fair & Affordable Housing Crisis at Community Town Hall of Delaware State University in Dover, DE. The community event brought together residents, advocates, and partners to discuss Delaware's housing challenges, fair housing rights, and community-driven solutions.

The town hall focused on the barriers many Delawareans faced in accessing safe, fair, and affordable housing, while creating space for public input, shared experiences, and solution-oriented conversation. Melody Phillips, Director of City of Wilmington Parks & Recreation Department and Wes Southall of Wilmington Housing Authority participated in a panel discussion, contributing to the conversation around housing equity and the importance of collaborative action across communities.

A NEW FOUNDATION FOR SUCCESS

Wilmington Housing Authority (WHA) and Delaware Affordable Housing Group (DAHG) are proud to recognize Xavier Osgood for his determination and commitment to creating a brighter future. Xavier's journey reflects the positive impact that can occur when housing assistance, workforce development, and supportive services work together. Through DAHG's Premier Rapid Housing Placement Team (PRHPT) and WHA's Lead Abatement Training Program, Xavier was able to access resources that helped him move beyond housing instability and begin building a more secure and purposeful life. His story serves as a powerful example of how coordinated support can help individuals overcome challenges and pursue new opportunities.

Prior to enrolling in the Lead Abatement Program, Xavier faced significant housing insecurity and often did not know where he would stay from one night to the next. Through the support of the PRHPT, he secured stable housing through the YMCA, providing the foundation needed to focus on

his future. Reflecting on his experience, Xavier shared, "My life took a transformative turn when I enrolled in the Lead Abatement Program. This opportunity inspired me to rise above my circumstances and pursue a more stable and purposeful path. Prior to joining the program, I faced significant housing insecurity and often did not know where I would stay from one night to the next. Since becoming a participant, I have secured stable housing through the local YMCA and have begun to focus more intentionally on my future. I am now exploring additional educational opportunities to further develop my skills and expand my prospects for long-term success." WHA and DAHG congratulate Xavier on the progress he has made and look forward to supporting him as he continues to pursue education, career advancement, and long-term self-sufficiency.



Those in need of placement assistance, interested community partners and landlords can reach the team by calling 302-429-6701 or email dahgresource@whadelaware.org. Those interested in partnering with or participating in Lead Abatement workforce development email wsouthall@whadelaware.org or call 302-647-9549.

NON-PROFIT LEADERSHIP CERTIFICATION



Congratulations to Wilmington Housing Authority's Media Specialist, Alex Wilson, on successfully completing the Non-Profit Leadership Certification Course at the University of Delaware. Reflecting on his experience, Alex shared, "You're surrounded by non-profit leaders and are able to network while listening to people discuss their organization, along with the ups and downs of running a nonprofit." The course broadened his understanding of the nonprofit sector and provided valuable insights into leadership, strategic decision-making, and community engagement. For his final presentation, Alex explored challenges related to organizational growth, resident support, and long-term sustainability, applying nonprofit management concepts to real-world scenarios. The experience

strengthened his understanding of how nonprofits operate and achieve their mission. Inspired by what he learned, Alex hopes to develop a youth-focused media program for WHA residents that will help participants build media and communication skills while fostering creativity, career readiness, and personal growth. We are proud of Alex's achievement and look forward to the positive impact his new knowledge and ideas will bring to WHA and the communities we serve.



BUILDING A FUTURE THROUGH PARTNERSHIP AND PERSEVERANCE



Wilmington Housing Authority (WHA) and Delaware Affordable Housing Group (DAHG) are proud to celebrate the success of Jamal Anderson, whose journey demonstrates the power of partnership, determination, and opportunity. Facing housing insecurity and uncertain circumstances, Jamal took an important step forward by enrolling in WHA and DAHG's Lead Abatement Training Program. Through the program, he gained valuable skills and secured employment, creating a pathway toward greater stability and self-sufficiency. At the same time, DAHG's Premier Rapid Housing Placement Team (PRHPT) worked alongside him to address his housing needs, connecting him with temporary housing support through the YMCA while helping him navigate other barriers to independence.

Today, Jamal continues to build momentum toward a brighter future. In addition to employment and housing assistance, WHA and DAHG are helping him obtain vital identification documents, including his birth certificate, and supporting his efforts to reinstate his CDL license. Reflecting on his experience, Jamal shared, "I was

housing insecure, staying wherever I could find a place. Then I enrolled in the Lead Abatement Program, and that program gave me employment. The Premier Rapid Housing Placement Team stepped in to provide housing support at the YMCA. Now they're also helping me get my birth certificate so I can finally get my driver's license. On top of that, WHA and DAHG are working with me to get my CDL license reinstated. I'm not just getting by anymore — I'm building a future." Jamal's success highlights how WHA and DAHG's integrated programs work together to support residents and clients beyond housing alone—creating opportunities for employment, personal growth, and long-term stability. We congratulate Jamal on his accomplishments and look forward to seeing all that he achieves in the future.

Those in need of placement assistance, interested community partners and landlords can reach the team by calling 302-429-6701 or email dahgresource@whadelaware.org. Those interested in partnering with or participating in Lead Abatement workforce development email wsouthall@whadelaware.org or call 302-647-9549.

BUILDING CONNECTIONS, SUPPORTING SUCCESS: RESIDENT SERVICES ACTIVITIES ACROSS WHA COMMUNITIES

At Wilmington Housing Authority, Resident Services is committed to creating opportunities for residents to stay connected, informed, and engaged while accessing valuable resources that support health, wellness, and self-sufficiency. Through partnerships with organizations such as Trinity Health St. Francis and Aetna Medicare, residents can participate in monthly activities that combine education, community engagement, and fun. At Parkview Apartments, residents gather on the third Thursday of each month at 2:00 p.m. for Bingo, where participants enjoy friendly competition and have the opportunity to win household cleaning supplies. Residents can also visit the monthly Information Table, typically held on the last Monday of each month, to connect with service providers and learn about available resources. Additionally, Aetna Medicare periodically hosts informational sessions in the community room on select third Thursdays from 11:00 a.m. to 1:00 p.m.



Residents at Baynard Apartments and Crestview Apartments also have opportunities to engage with community partners throughout the month. At Baynard, Trinity Health hosts Bingo on the first Wednesday of each month at 2:00 p.m., while Information Tables are available in the lobby on the fourth Wednesday of each month from 2:00 p.m. to 4:00 p.m. At Crestview Apartments, Trinity Health hosts an Information Table on the third Wednesday of each month from 2:00 p.m. to 4:00 p.m. These activities are designed to provide residents with access to helpful information, community resources, and social engagement opportunities. WHA encourages all residents to take advantage of these offerings and to reach out to the Resident Services Department for assistance with employment goals, financial empowerment, housing stability, homeownership opportunities, community resources, and other supportive services that can help individuals and families achieve greater self-sufficiency and improve their quality of life.

PRHPT ADVANCES FAMILY HOUSING SOLUTIONS



In May 2026, our Premier Rapid Housing Placement Team (PRHPT) successfully housed over 20 families in safe, clean, and decent homes, despite the scarcity of affordable members in their commitment to Delawareans statewide with their resourceful efforts. April placements were primarily Wilmington Housing Authority (WHA) Housing Choice Vouchers as well as two Rapid Housing Voucher holders, and a self-pay household.

The Premier Rapid Housing Placement Team is dedicated to assisting individuals and families in Wilmington with housing placement. They offer services such as case management, barrier assistance, and rental navigation. Those in need of placement assistance can reach the team by calling 302-429-6701 or email dahgresource@whadelaware.org.

By partnering with landlords, the team helps clients find suitable affordable housing options. These collaborations benefit landlords by aiding in tenant recruitment, ensuring property inspections

meet safety standards, and facilitating secure monthly rental payments through a designated portal. To become a client or landlord partner, please contact 302-579-2925.

MCMULLEN SQUARE NEW CONSTRUCTION TOWNHOMES AVAILABLE FOR PURCHASE

The Delaware Affordable Housing Group (DAHG), introduces McMullen Square Townhomes, one of Wilmington's premier new construction communities. McMullen Square, located in Northeast neighborhood of Wilmington, DE, offers spacious, three-story townhomes with three bedrooms and 2.5 bathrooms. These newly constructed townhomes boast modern style and coveted amenities, including multi-level living, eat-in kitchens, rear decks, and an oversized garage. Close to schools, and minutes from Wilmington's Train Station, I-95 and I-495, McMullen Square, provides unparalleled convenience. Depending on the lot, the buyers will have the option of a one or two-car garage, allowing for interior customization to suit individual preferences. McMullen Square townhomes come in two primary layouts ranging from 1,767 to 1,982 square feet. For more details on McMullen Square, visit <https://delawareaffordablehousinggroup.com/mcmullen-square-townhomes>.

For further information on purchasing one of the McMullen Square townhomes, contact Gary Williams, Associate Broker at Berkshire Hathaway Home Services Fox & Roach Realtors at gary.williams@foxroach.com.



Pictured Above: Frontage of McMullen Square.



Pictured Above: McMullen Square Main Living Area, Kitchen, Bedroom, Den, and Deck

LUTHER TOWERS ACCEPTING APPLICATIONS FOR THE WAITLIST

Luther Towers of Wilmington is accepting applications for their waitlist for individuals 62 years old or older in their subsidized housing community of studio and 1-bedroom apartments. Experience the perfect blend of comfort and community. These newly renovated spacious apartments feature modern amenities and enjoyable on-site services such as a fitness center, library, computer lab, laundry facility, and inviting community spaces. With easy access to local shops, dining, and public transportation, everything needed is just moments away.



For more information, email luthertowers@pkmanagement.com or call 302-652-3737. Visit <http://www.luthertowers.com/independent-living-apartments/> for more details and to apply.



RESIDENT SERVICES MONTHLY WORKSHOPS

One-Stop Shop EnVision Center May 2026 Workshops provided WHA Residents with resources to assist their path of self-sufficiency. Workshops included healthcare resources, home care, health screening and more.

For more information on WHA One-Stop Shop EnVision Center workshops or to discuss partnerships for future workshops, call 307-269-9126.



ENVISION CENTER HOMEBUYER'S WORKSHOPS

The WHA One Stop Shop's (OSS) EnVision Center is hosting a Homebuyer's Workshop on July 9, August 23, and September 10, 2026, at 2:00 PM. The Homebuyer's Workshop is offered virtually every second Thursday of the month through Microsoft Teams. For more information or to register, call the WHA OSS at 307-269-9126.

ONE-STOP SHOP ENVISION CENTER WORKSHOPS

The WHA One Stop Shop's (OSS) Envision Center's overall mission is to serve as the catalyst for change for the achievement of "self-sufficiency" for all WHA residents as well as individuals living in the City of Wilmington. Below are the dates for the upcoming workshops. For more information on upcoming workshops, check your building's resource bulletin board or call 307-269-9126.

DATE	TIME	LOCATION	CONTACT PERSON	PRESENTATION
6/26/2026	1:30 PM	Herlihy Apartments 320 E. 5th Street Wilmington, DE 198021	Cory Chisolm	Aetna
6/26/2026	2:00 PM	Herlihy Apartments 320 E. 5th Street Wilmington, DE 19801	Robin Morgan	Office of Emergency Managent for the City of Wilmington
6/26/2026	2:30 PM	Herlihy Apartments 320 E. 5th Street Wilmington, DE 19801	Helena Wallace	Silver Lining Home Healthcare
6/26/2026	3:00 PM	Herlihy Apartments 320 E. 5th Street Wilmington, DE 19801	Cynthia Concepcion	ChristianaCare CHW Breast Screening Program
7/10/2026	1:30 PM	Crestview Apartments 2700 N. Market Street Wilmington, DE 19802	Cory Chisolm	Aetna
7/10/2026	2:00 PM	Crestview Apartments 2700 N. Market Street Wilmington, DE 19802	Robin Morgan	Office of Emergency Managent for the City of Wilmington
7/10/2026	2:30 PM	Crestview Apartments 2700 N. Market Street Wilmington, DE 19802	Cynthia Concepcion	ChristianaCare CHW Breast Screening Program

SMART 911

Be prepared for any emergency by giving public safety the information they need to better help and communicate with you at no cost and anywhere you are located. A user can simply enter a name and phone number, or they can add photographs of family members or pets, medical information, mobility concerns, emergency contacts, gate or garage codes, utility shutoff information, and other details that could assist first responders during an emergency.

The information remains secure and inaccessible unless the person places a 911 call. At that point, the information becomes available to the dispatcher and responding agencies only for the duration of the incident. Police, Fire, and EMS personnel cannot browse or access the information outside of an active 911 event.

The system also prompts users annually to review and update their information to help ensure accuracy.

For more information and to register, visit <https://www.smart911.com/>.



BACK TO SCHOOL RALLY

Sunday Breakfast Missions annual Back to School Rally for Kindergarten through 8th grade will take place on August 8, 2026, at 10:00 AM. Sunday Breakfast Mission is located at 110 N. Poplar Street · Wilmington, DE. free backpack of school supplies and dental screenings offered.

No Pre-Registration Required. Children must be accompanied by THEIR parent or guardian. Children must be present at time of distribution. Visit <https://sundaybreakfastmission.org/what-we-do/back-to-school-rally>, for more information.

FOUNDATION PROJECT

The Foundation Project located withing the Wilmington Library at Rodney Square, Wilmington, DE provides free furniture assistance to ensure no family is forced to live without the essentials that make a house feel like home. For more information on program services, visit <https://communitycaresdelaware.com/foundation> or call 302-584-5102.



DELMARVA POWER ENERGY ASSISTANCE

Delmarva Power offers programs and services to help those in need, including energy assistance, help for customers with special needs, and ways for neighbors to help neighbors. Programs and services include, but not limited to:

- Customer Relief Fund
- Bill Payment Assistance
- Payment Arrangements
- Budget Billing

For more information and next steps, visit <https://www.delmarva.com/my-account/customer-support/assistance-programs-de>.



MEDICARE DIABETES PREVENTION

Christiana Care's PreventT2 is a one-year lifestyle program that will help participants lower the risk of getting type 2 diabetes. The program is part of the National Diabetes Prevention Program. The goal of the program is to help participants lose 5 to 7 percent of their weight, by eating healthier and being more physically active.

Meetings are offered in-person and virtually and occur weekly for the first six months and every other week for the next six months.

Free to eligible Medicare or Managed Medicare participants with prediabetes as well as for any ChristianaCare employee and their covered beneficiaries (regardless of age) who want to learn about living a healthier lifestyle and reducing their risk of type 2 diabetes.

For more information and to register, visit <https://christianacare.org/us/en/care/specialty-care/diabetes/prediabetes> or call 302-623-3439.

FREE MENTAL HEALTH EMERGENCY SERVICES AVAILABLE FOR CHILDREN & YOUTH

The Delaware Guidance Services for Children & Youth, Inc. in partnership with the Department of Services for Children, Youth, & Their Families offers mental health emergency services to children between the ages of 3 and 17 years old in the state of Delaware. Their skilled Crisis Intervention Clinicians come to wherever you are, whenever you need it, to provide crisis support. Services are available 24 hours a day/365 day a year. Call 1-800-969-HELP (4357) for immediate assistance. Visit <https://www.delawareguidance.org/> for more information.

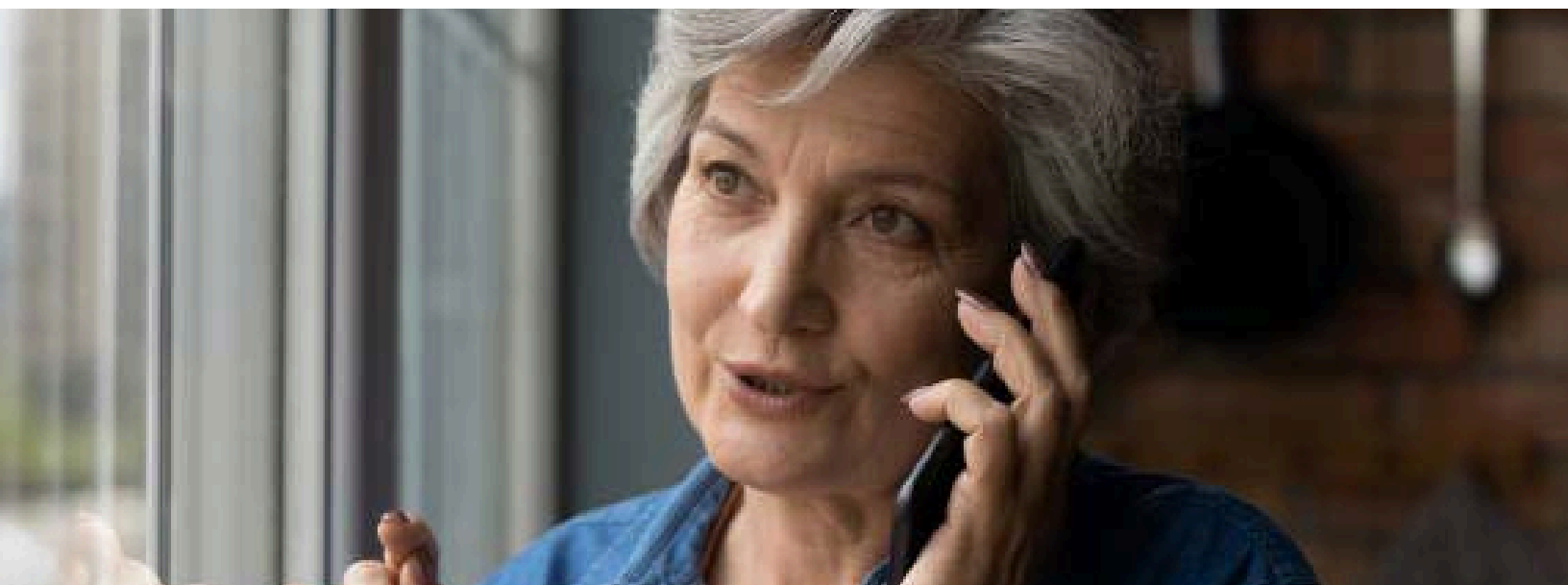
HEALTHY LATIN FAMILIES PROGRAM

A free program for New Castle County residents offered through ChristianaCare. The program is especially designed to help people without insurance, individuals who need screenings and preventive care, those with chronic diseases such as high blood pressure, asthma, diabetes or cancer, and children with asthma. A trained Spanish-speaking Promotora (health promotor) will help participants. Call 302-623-4747 or visit <https://christianacare.org/us/en/care/cancer-care/screenings-and-prevention/healthy-latin-families-program>, for more information and to register.

MOBILE HEALTH SERVICES

ChristianaCare offers mobile same day full-service family medicine care to Walk-ins on Mondays at Friendship House Empowerment Center, 720 Orange Street, Wilmington, DE 19801 from 8:00 AM to 12:00 PM. Also, Wednesdays at Friendship House Empowerment Center, 720 Orange Street, Wilmington, DE from 8:00 AM to 12:00 PM and 1:00 PM to 5:00 PM. Appointments can be scheduled at 302-623-4471. For more information and full schedule, visit <https://christianacare.org/us/en/wellness/community-health/mobile-health>.





DELAWARE GUIDANCE SERVICES FOR CHILDREN & YOUTH, INC.

Delaware Guidance Services for Children & Youth, Inc. is Delaware’s largest provider of non-residential mental health services for children and families. Their trained clinicians are ready to help children and youth who may be experiencing anxiety, depression, stress, trauma and PTSD, and other behavioral or mental health concerns. Medicaid and all major insurance providers are accepted. For more information visit <https://www.delawareguidance.org/> or call one of the agency locations.

WILMINGTON
(302) 652-3948

NEWARK
(302) 455-9333

DOVER
(302) 678-3020

LEWES
(302) 645-5338

SEAFORD
(302) 262-3505

HIGHMARK REWARDS PROGRAM



You deserve a reward.

Healthy Rewards is one of your Highmark Health Options benefits. You or your child can earn rewards when you complete certain healthy activities.



To sign up and see the rewards you can earn, go online or call:
my.therapypayrewards.com/hhs
1-866-469-7973



Scan to get started.

Reward activities can include:

\$15
Annual well-child visit
(ages 3-16)

\$15
A1c test for people
with diabetes

\$25
Cervical cancer screening

\$15
Annual wellness visit
(age 20 and older)

\$10 per visit/up to 8 visits
Well-baby visit series
(through age 30 months)

\$15
Doctor visit after giving birth
(up to 64 days after delivery)

\$15 per fill/up to 6 fills
Asthma controller medicine
(age 18 and younger)

\$25
Breast cancer screening

\$10
Lead screening
(up to age 34 months)

\$25
Colorectal cancer screening

\$15
Retina exam for people
with diabetes

\$15
Doctor visit after
leaving the hospital

Powered by
TheraPay

Highmark Health Options (HHO) is an independent licensee of the Blue Cross Blue Shield Association, an association of independent Blue Cross/Blue Shield Plans. HHO complies with applicable federal and state laws and does not discriminate on the basis of race, color, national origin, age, disability, or sex.

MEDICAID AND CHIP RENEWALS TIME

It’s time to renew your Medicaid and CHIP so you and your family don’t lose your coverage. There are a few things you may need to have for renewal:

- Your Social Security number
- Proof of income (pay stubs)
- Your Medicaid renewal form
- W-2 forms

Visit https://dhss.delaware.gov/dmma/de_medicaid_eligibility_renewal/ for more information or call the Delaware Health and Social Services Customer Relations Unit at [1-866-843-7212](tel:1-866-843-7212) (TTY [1-855-889-4325](tel:1-855-889-4325)).

CITY POOLS

City of Wilmington’s Parks and Recreation Department’s five City Pools will be open June 22 to August 21, 2026, P.S. Dupont Pool will run from (July /6 to August 14), 2026. All City Pools are closed on 4th of July. See below for the 2026 Pool Schedule:

Pool	Address	Telephone	Hours of Operation	Sunday	Monday	Tuesday	Wednesday	Thursday	Friday	Saturday
Eden	New Castle Avenue & City Ave	302-573-5560	3PM - 7PM	1PM - 7PM	CLOSED	3PM - 7PM	3PM - 7PM	3PM - 7PM	CLOSED	1PM - 7PM
Joseph R. Biden Aquatic Center (Prices)	26 th St. & Speakman	302-571-4248	1PM - 7PM	1PM - 7PM	CLOSED	1PM - 7PM	1PM - 7PM	CLOSED	1PM - 7PM	1PM - 7PM
Brown	7 th & Lombard	302-571-4265	1PM - 7PM	1PM - 7PM	CLOSED	1PM - 7PM	CLOSED	1PM - 7PM	1PM - 7PM	1PM - 7PM
WHACC	501 North Madison	302-571-4266	1PM - 7PM	CLOSED	9AM - 11AM ADULT SWIM	9AM - 11AM ADULT SWIM	9AM - 11AM ADULT SWIM	9AM - 11AM ADULT SWIM	9AM - 11AM ADULT SWIM	CLOSED
					11AM - 1PM SUMMER CAMPS	11AM - 1PM SUMMER CAMPS	11AM - 1PM SUMMER CAMPS	11AM - 1PM SUMMER CAMPS	11AM - 1PM SUMMER CAMPS	
					1PM - 7PM OPEN SWIM	1PM - 7PM OPEN SWIM	1PM - 7PM OPEN SWIM	1PM - 7PM OPEN SWIM	1PM - 7PM OPEN SWIM	
P.S. Dupont	701 W. 34 th	302-762-7146	3PM - 6PM	CLOSED	3PM - 6PM	3PM - 6PM	3PM - 6PM	3PM - 6PM	3PM - 6PM	CLOSED

CHILD CRISIS HOTLINE

Have a child experiencing a behavioral health crisis? Call our 24/7 Mobile Response Stabilization Services hotline. at 1-800-969-HELP (4357).

REPORT CHILD ABUSE & NEGLECT

If you are concerned about a child's safety, call the Child Abuse & Neglect Report Line today at 1-800-292-9582 or a report can me made online at <https://kids.delaware.gov/family-services/child-abuse-and-neglect-reporting/>.

COMMUNITY RESOURCE FAIR

Pushing Through, Inc. will host their 4th Annual Community Resource Fair on Saturday, July 25, 2026 from 10:00 AM to 2:00 PM at the Claymont Community Center. Attendees will find valuable information on health, wellness, and much more. For more information, visit <https://www.pushingthrough.org/events> or email Tangie@pushingthrough.org.



CITY OF WILMINGTON YOUTH SAFE HAVEN

City of Wilmington’s Department of Parks and Recreation is offering a Safe Haven at William Hicks Anderson Community Center, 501 North Madison St., Wilmington, DE. The program is open to youth from five to 17-years-old Tuesday through Friday starting a 6:00 PM and closing at 11:00 PM on Tuesdays with Wednesday through Friday closing at 10:00. Saturday hours are 2:00 PM to 5:00 PM with a variety of activities and food being served. Tues For more information, call 302- 571-4266.



VICTIM'S COMPENSATION ASSISTANCE PROGRAM

City of Wilmington Victim Services Unit has a Victim Compensation Assistance Program covers medical bills, lost wages or funeral costs for certain crimes. Contact Victim Services for more information or assistance with the application process. For more information on the Victim Services Unit, visit <https://www.wilmingtonde.gov/government/city-departments/department-of-police/victim-services>. Call Victim Services Coordinator at 302- 576-3622.

LEARN TO RIDE PROGRAM

This monthly event includes police officers who come out to help teach children how to safely ride a bicycle. The free program is hosted at the Police Athletic League of Wilmington (3707 North Market Street) in the gymnasium. Space is limited, and registration is required.

To register a youth, visit <https://www.wilmingtonde.gov/government/public-safety/wilmington-police-department/join-the-wilmington-police-department/wpd-learn-to-ride-program>.

HIGH SCHOOL DIPLOMA ON-LINE

Delaware Center for Distance Adult Learning has an opportunity for Delaware adults without a high school credential to earn a James H. Groves High School diploma online and GED preparation. For more information, visit their website at: <http://www.css-msa.org>.

WPD COMMUNITY RESOURCE FAIRS

Wilmington Police Department host Community Resource Fairs with vendors and agencies from the community, throughout Wilmington. Each Community Resource Fair is free and open to the public. Upcoming events include:

- Thursday, July 9, 4-6 p.m. - Cool Springs Park
- Tuesday, August 4, 4-7 p.m. - Community Resource Fair/National Night Out celebration - Haynes Park
- Thursday, September 10, 4-6 p.m. - Community Resource Fair/Day of Remembrance for Murder

For more information and additional fair dates and locations, visit

<https://www.wilmingtonde.gov/government/public-safety/wilmington-police-department/wpd-community-resource-fairs>.



DELAWARE AFFORDABLE HOUSING HUB

The Delaware Housing Access Association (DHAA) is a partnership of all five Public Housing Authorities (PHAs) in the State of Delaware. This partnership streamlines the application process for the Section 8 Housing Choice Voucher Program and other affordable housing properties managed by housing authorities. For more information, to apply and to update waitlist applications, visit <https://delaware.affordablehousing.com/>,

HOUSING COUNSELING PROGRAM

Neighborhood House of 1218 B Street, Wilmington, DE offers housing counseling and mortgage counseling assistance. Provides a full range of services, advice, and technical assistance to housing clients. Provides pre-purchase, pre-rental, mortgage default, budget, and post-occupancy counseling.

For more information and next steps, visit <https://www.neighborhoodhse.org/housing>.

CATHOLIC CHARITIES HIV SERVICES

Catholic Charities HIV Services (2601 West 4th Street, Wilmington, DE) provides community services including financial coaching and case management support, information and referral, and limited financial assistance for basic needs expenses like rent, utilities, etc. to those infected or affected by HIV.

For more information and assistance, visit <https://ccwilm.org/> or call 302-655-9624.



THE ARC OF DELAWARE

The Arc of Delaware provides resources and support to individuals with Intellectual Developmental Disabilities (IDD) such as Education, Systems Navigation, Case Management and Social and Recreation activities and events. They provide support, outreach, housing options, job assistance, and advocacy. For more information and assistance, visit <https://thearcofdelaware.org/> or call [302-996-9400](tel:302-996-9400).



STEHM HOUSING SOLUTIONS

Supportive Transitional and Emergency Housing Ministry (STEHM) provides two housing solutions for individuals requiring shelter in an emergency situation or on a temporary basis. Martha House I & II and Motel Ministry. The Motel Ministry provides short-term emergency housing for needy or displaced persons. Martha House provides long-term transitional housing for women and children, fostering the goal of independent living through counseling and life skills training in a safe, supportive environment. It strives to reintegrate individuals by encouraging self-sufficiency, addressing the fundamental causes of homelessness, poverty, joblessness and inability to find and maintain affordable housing. In addition, Martha House provides children stability and access to uninterrupted schooling and social services, and reunifies families separated due to their social and social services, and reunifies families separated due to their socials encourage and reinforce family values. Visit <https://stehm.org/> for more information.

CHOICES FOR COMMUNITY LIVING

Choices for Community Living, Inc. (CCL) of Gateway West Shopping Center, Dover, DE, provides support and services to individuals with intellectual and developmental disabilities. They have Residential programs, Day Support, and Drop-in Support Services. CCL currently has homes in Lincoln, Harrington, Bear, New Castle and Dover, Delaware.

Visit <https://www.ccldelaware.org/> for more information and next steps.



FOOD ASSISTANCE

Free food distribution is hosted at Noon Monday through Friday, Rosehill Community Center, 19 Lamson Lane, New Castle, DE. Bea's Blessings Food Pantry also offers hours Mondays 8:00 AM to 11:00 AM and Tuesdays from 3:00 PM to 7:00 PM. Photo ID w/ Proof of Address (adults), Social Security Card & Birth Certificate (minor child). For more information on services offered at Rosehill Community Center, visit <https://www.rosehillcommunitycenter.org/new-page-1>.

CPC FOOD HUB

Community Presbyterian Church (CPC) Food Hub at 519 Rogers Rd., New Castle, DE (in back of the church) provides food assistance of perishable and non-perishable items at no cost. Every Saturday, except the first Saturday, from 10:00 AM to 12:00 PM.



CLAYMONT COMMUNITY MARKET & GARDEN

Claymont Community Market & Garden at 3117 Green Street, Claymont, DE is open by appointment with both daytime and evening pickup options, the Market provides free groceries, including fresh produce, meat, dairy, and shelf-stable items, to individuals and families who are struggling to afford nutritious food. For more information, visit <https://claymontcenter.org/programs/community-market-and-garden/> or call 302-792-2757 X 147 or email BarbaraBoese@ClaymontCenter.org.

COMMUNITY FOOD PANTRIES

Food Bank of Delaware partners with community food pantries statewide. For a full list of their pantries and service details, visit <https://www.fbd.org/get-help/community-food-pantries/>.

MOBILE FOOD PANTRIES

The Food Bank of Delaware's mobile pantry travels to underserved communities throughout the state, bringing healthy, shelf-stable, and perishable foods to those in need. For more monthly listings of locations and times, visit <https://www.fbd.org/program/mobile-pantry/>.

SAINT HELENA'S OUTREACH & FOOD PANTRY

Saint Helena's Outreach of 602 Philadelphia Pike, Wilmington, DE offers assistance by appointment only. Calls are answered Monday through Thursday from 9:00 AM to 12:00 PM. Volunteers work directly with those in need of emergency assistance for utilities and rent. They also distribute food through the parish food closet.

For an appointment, call 302-764-7545 or Carol Ann Plunkett 302-764-0325 X 104 .

HOLY ROSARY FOOD CLOSET

Holy Rosary Outreach Food Closet located at 3200 Philadelphia Pike, Claymont, DE can be reached at 302-798-1513 Mondays and Thursdays from 9:30 AM to 11:30 AM for an appointment.





CHILD, INC. VOLUNTEER OPPORTUNITIES

Child, Inc. of Delaware with headquarters at 507 Philadelphia Pike, Wilmington, DE has volunteer opportunities. The two programs in need of volunteers include:

1. Domestic Violence Advocacy Program
2. Annual Race/Walk 5K Against Domestic Violence

For job descriptions and next steps to register, visit <https://childinc.com/job-opportunities/>.

FOOD DRIVE COLLECTION

Claymont Community Market & Garden at 3117 Green Street, Claymont, DE is welcome food donations from individuals as well as food drive collections. For more information on needs in the market and collecting, visit <https://claymontcenter.org/programs/community-market-and-garden/> or call 302-792-2757 X 147 or email BarbaraBoese@ClaymontCenter.org.

YMCA VOLUNTEER OPPORUNITIES

YMCA Delaware is recruiting volunteers at their Walnut Street and Brandywine locations, Wilmington, DE. The volunteer's responsibilities include completing tasks assigned by the supervisor, upholding the organization's values, and maintaining a high degree of professionalism with all stakeholders.

For job description and to apply, visit <https://www.ymcade.org/ymca-careers/>.

ONE STOP SHOP BOUTIQUE DONATIONS BEING ACCEPTED

Wilmington Housing Authority One Stop Shop Boutique for Residents working toward self-sufficiency and stability are actively accepting donations. Items being accepted are gently loved, clean professional and business casual clothing, shoes, handbags, jewelry, and accessories for both men and women.

Boutique Hours:

- Tuesdays: 2:00 PM to 4:00 PM
- Thursdays: 11:00 AM to 1:00 PM
- Or by appointment

Contact Resident Services at 307-269-9126 or residentservices@whadelaware.org, to arrange a donation drop-off.



RODNEY STREET TENNIS CAMP SCHOLARSHIPS

Wilmington Housing Authority (WHA) is offering WHA Residents, ten Rodney Street Tennis Camp Scholarships on a first come first serve basis to attend their camp starting June 8, 2026, to August 7, 2026. The camp is located at Tower Hill School, 2813 W. 17th St., Wilmington, DE. When registering, identify yourself as a Wilmington Housing Authority resident, place your First Name in and type Wilmington Housing Authority Resident next to your First Name. If you have any questions, call 302-256-0235. For more information on the camp and to register, visit <https://rodneystreettennis.org/>.



PAL OF WILMINGTON SUMMER CAMP

PAL of Wilmington is now accepting registration for 2026 at 3707 N. Market Street, Wilmington, DE. The camp is 10 weeks from June 15 through August 14, 2026, serving children ages five through 13. Full day camp is \$185.00 per week, with a registration fee of \$20.00. Camp hours are 7:00 AM to 6:00 PM. Purchase of Care is accepted. Visit <https://palw.org/educational-programs-and-summer-camp#summer-camp> more information on costs, dates and to enroll.

NEIGHBORHOOD HOUSE SUMMER CAMP

Neighborhood House of 1218 B Street, Wilmington, DE offers summer camp for 5- to 12-year-olds Monday through Friday, 7:30 AM to 5:00 PM. To enroll, call Jazmine at 302-658-5404, ext. 135. or email jtucker@neighborhoodhse.org.

THE COOKING CLUB SUMMER CAMPS

The cooking camp located at 1900 N Tatnall Street, Wilmington, DE is a hands-on experience, complete with chef hats, aprons, and utensils, letting participants ages eight to 14-years-old immerse themselves in the cooking and baking process. Camp is Monday to Thursday from 10:00 AM to 2:00 PM with a cost of \$299.00 for each Camp or \$1,116.00 for a four Week Camp Series. Camp weeks are from June 15 to August 13, 2026. For more information and to register, visit <https://www.thecookingclubde.com/camp-2026>.

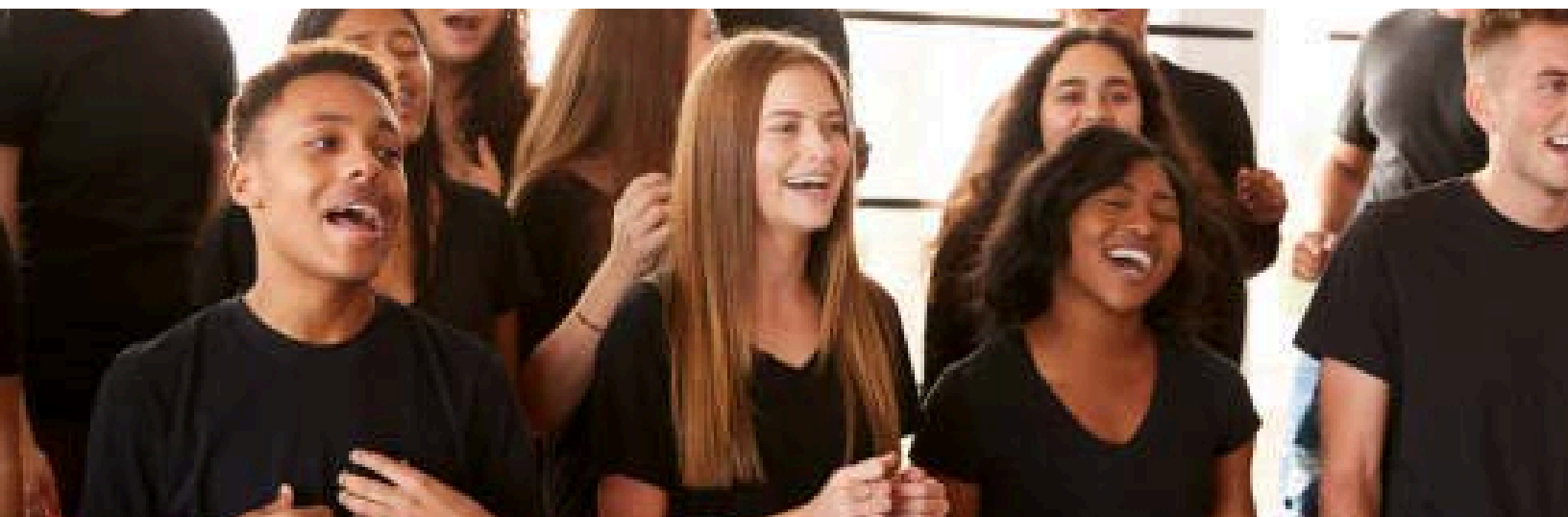
CENTER FOR CREATIVE ARTS SUMMER PROGRAM

Center for the Creative Arts, 410 Upper Snuff Mill Row, Yorklyn, DE are offering both full and half day camps Monday through Friday. Camp is available for children Kindergarten through 9th grade. Each week will provide different camp themes and focus on different mediums, including but not limited to: pottery, mixed media, sculpture, painting, theatre, glass works, and more.

Financial aid is available in the form of full or partial scholarships based on demonstrated need.

Visit <https://www.ccarts.org/summer-camp> for more information and to register, call 302-239-2434 or email camp@ccarts.org.





URBANPROMISE WILMINGTON CAMP

Urban Promise Summer camps are six weeks at 5 locations throughout Wilmington, DE and include arts & crafts, songs, skits, recreation, Bible lessons, and educational enrichment. Children are served both breakfast and lunch. Camp is hosted June 23 to July 31, 2026, Monday through Friday, from 9:00 AM to 2:00 PM. For more information and to register, visit https://www.urbanpromise.org/programs/summer-camps?utm_source=campwing.

DELAWARE THEATRE COMPANY CAMP

Delaware Theatre Company offers Summer on Stage 2026 at 200 Water Street, Wilmington, DE in two sessions. Camp is offered to rising 3rd graders (eight years old) to 16 years old in a full-day format where campers train in acting, voice, movement, improv, storytelling, and audition skills with professional teaching artists. Morning are age-appropriate core classes, in the afternoon creation and rehearsals for a collaborative mixed-age performance.

Daily schedule is 9:00 AM to 4:00 PM with extended care available for an additional cost. Session 1 is June 29 to July 17, 2026, and Session 2 is July 20 to August 7, 2026, at a cost of \$1,185.00 (\$395.00 per week). For more information and to register, visit https://www.delawaretheatre.org/summer-programs?utm_source=campwing.

YOUTH ROWING ASSOCIATION CAMP

Wilmington Youth Rowing Association (WYRA), headquartered at WYRA Boathouse House, 500 E. Front St., Wilmington DE offers several summer camp options to youth beginning at 10-years-old. No experience necessary.

For more information and to register, visit https://www.wyra.org/register?utm_source=campwing. If you're concerned about the cost of joining WYRA, please contact Executive Director, Kate Mendoza at kate@wyra.org to discuss financial assistance.

CHOIR SCHOOL OF DELAWARE CAMP

The Choir School of Delaware (CSD) is offering Step Up Summer, a six-week (June 22 to August 1, 2026) intensive camp for Delaware children 10 to 18-years old at no cost. Daily transportation is being offered to their location of 2013 N Market St. Wilmington, DE. A morning and afternoon session is being offered. For more information and to register, visit <https://www.choirschoolofdelaware.org/step-up-summer-2026>.

DELAWARE CHILDREN'S THEATRE

Delaware Children's Theatre (DCT) Summer 2026 Theatre Workshops, 1014 Delaware Ave, Wilmington, DE, are offered to Rising 3rd - 8th grades (ages eight to 13). Camp will take place June 22 to July 3, 2026 from 10:00 AM to 2:00 PM for \$485.00. Campers will be able to showcase their talent with a stage performance on the last day of camp.

For more information and to register, visit https://www.dechildrenstheatre.org/workshops?utm_source=campwing.



SCHOOL AGE SITE INTERN

YMCA Delaware is recruiting for a School Age Intern at their Walnut Street location, Wilmington, DE. The School Age Site Intern is for the Before & After Care Enrichment Program (BASE). This job is at their offsite schools to work Monday through Friday 6:45 AM to 9:00 AM for the morning program and 2:00 PM to 6:00 PM for afternoon program for children ranging from 5 to 12 years old.

For job description and to apply, visit <https://www.ymcade.org/ymca-careers/>.

PAL OF WILMINGTON INTERN

PAL of Wilmington is now accepting applications for a full-time Assistant Teacher Intern at 3707 N. Market Street, Wilmington, DE. This position is Monday through Friday 7:00 AM to 6:00 PM. For job description and next steps to apply, visit <https://palw.org/get-involved#employment-opportunities-anchor>.

CHILD, INC. INTERNSHIPS

Child, Inc. of Delaware with headquarters at 507 Philadelphia Pike, Wilmington, DE offers internships. If you are interested in applying for an internship, submit resume with a cover letter including when you need work as an intern, what your available hours are, and what you are hoping to accomplish.

For job descriptions and next steps to apply, visit <https://childinc.com/job-opportunities/>.

SUMMER CAMP SEARCH TOOL

Campwing website provides families with an opportunity to search not only locally but also nationwide. To search for a camp, visit <https://campwing.com/>.

CO-ED BASKETBALL CAMP

Sunday Breakfast Mission of Wilmington, DE offers their annual Alazar's Co-Ed fundamental Basketball Camp at no cost. Camp is offered to nine to 11-year-old from June 22 to June 26, 2026, from Noon to 3:00 PM. Visit <https://sundaybreakfastmission.org/what-we-do/basketball-camp>, for information and to apply.

POLICE & PARAMEDIC SUMMER YOUTH PROGRAM

NCCPD & NCCDE EMS Summer Youth Program are accepting applications for the two-week program from July 6 to July 17, 2026. It gives youth the opportunity to explore a career in Law Enforcement and Emergency Medicine by working along side field professionals in classroom instruction, hands on training, and mentoring.

For next steps to apply, call New Castle County Public Safety at 302-573-2800.

URSULINE ACADEMY SUMMER CAMP

Summer at Ursuline Academy of Wilmington, DE includes weekly offerings for children 2.5 to 5 years (Montessori) and Wander & Wonder (with weekly field trips to various locations) for children in K - Rising 5th Grade. In addition, we offer Cooking at UA, Culinary Camp, UA Art Studio, Musical Theater, Fashion, Chess, Basketball Camp Field Hockey Camp up to 12th grade, and more. Camp dates are June 8 to August 14, 2026. For a full listing and to register, visit https://www.ursuline.org/student-life/summer-camp?utm_source=campwing.



MSK DREAMCHASERS BASKETBALL CLINIC

MSK Dreamchasers weekly Basketball Clinic at 1009 Sycamore Street, Wilmington, DE is designed to inspire, empower, and equip young athletes with essential life and court skills. The Clinic is co-ed youth 8 to 13-years of age on Sundays from 12:00 PM to 3:00 PM. Breakfast and water provided. For more information and to register, call 302-416-4017 visit <https://www.mskcommunitycenter.org/youth-programs>.

STATE OF DE HAS INTERNSHIPS

State of Delaware has internship positions available in both Department of Corrections and general Intern Pool. Categories of openings include:

For more information, job descriptions and to apply, visit <https://statejobs.delaware.gov/>.

DRBA LEGAL INTERN

Delaware River Bay Authority (DRBA) of Delaware Memorial Bridge Plaza, 2162 New Castle Ave., New Castle, DE. has a part-time Legal Intern opportunity. Salary for this position is \$25.00 per hour. For job openings and job description, visit <https://www.drba.net/jobs>.



POLICE CADET PROGRAM

Wilmington Police Department offers the Police Cadet Program. The program offers young adults 18 to 21 years old the opportunity to gain valuable experience by working directly with police officers and members of the community. For more information and to apply, visit <https://www.wilmingtonde.gov/government/public-safety/wilmington-police-department/police-cadet-program>.



WILMINGTON JOB CORPS TRAINING

Wilmington Job Corps of 9 Vandever Ave., Wilmington, DE offers training programs to low-income individuals 16 through 24-year-olds. Two training programs offered are Culinary Arts and Office Administration.

For more information and to apply, visit <https://wilmington.jobcorps.gov/>.

WILMINGTON HOPE COMMISSION

Wilmington HOPE Commission of 38 Vandever Avenue, Wilmington, DE offers a Job Readiness and Workforce Development for justice involved Delaware residents. Training is offered, at no cost, every Tuesday from 10:00 AM to 11:00 AM and walk-ins are welcome.

For more information, call 302-407-3397 or visit <https://www.wilmhope.org/>.

FIRE EMERGENCY SERVICES EXPLORER

Wilmington Fire Department offers Fire Emergency Service Explorer Post 100 program. The Explorer Program provides young men and women from the City of Wilmington, ages 14 through 20, with an up close, hands on experience of the fire service. Explorers are responsible for the operation of the post and are advised by the officers and firefighters of the Wilmington Fire Department. Training is accomplished through live training evolutions and through classroom lectures. Meetings are held twice a month from September through May at one of the city's fire stations. For more information and to apply, visit <https://www.wilmingtonde.gov/government/public-safety/wilmington-fire-department/explorer-post-100>.

LIFE SCIENCE CAREER TRAINING

Bioconnect DE is offering Biomanufacturing Training Program equips individuals with the necessary skills for high-demand roles in Delaware's life sciences sector at no cost to participants. Applications are open for the Fall 2026 cohort at the Chemours STEM Hub at East Side Charter School, 3000 N. Claymont St., Wilmington, DE. The 8-week, tuition-free course prepares participants for positions in manufacturing and operations, focusing on areas such as quality management systems, metrology, workplace safety, and good documentation practices.

For more information and to apply, visit <https://bioconnectde.org/biomanufacturing/>.

DE STATE FIRE SCHOOL

Delaware State Fire School of Dover, DE offers Fire, Rescue, and Emergency Medical Training as well as Public Fire Safety Education. For course catalog, tuition and to apply, visit <https://statefireschool.delaware.gov/>.

BOYS & GIRLS CLUB LITERACY INTERNS

Boys & Girls Club of Delaware have three Jr. Youth Development Professional - Literacy Intern positions. Two opportunities located in Wilmington and one in New Castle. For job descriptions and next steps to apply, visit <https://www.bgclubs.org/delaware-career>.

LEAD ABATEMENT TRAINING

Wilmington Housing Authority is recruiting participants for a 5-week Lead Abatement Training for a pathway into an environmental safety and construction remediation career. Compensation of \$15.00 per hour and light lunches during the training is provided as well as transportation. Job opportunities are available upon completion. Applicants must be 18 years of age or older and able to pass a FIT Test (respiratory mask safety requirement). Call today to begin preparing for your journey. For more information and to apply, email wsouthall@whadelaware.org or call 302-647-9549.

CERTIFICATE PROGRAMS

Delaware Department of Human Resources offers four Certificate programs to help Delaware State employees build skills that benefit both themselves and the organization. Programs offered are:

- Human Resources Certification
- Frontline Leadership
- Continuous Improvement Practitioner
- Project and Process Leadership

For more information and to apply, visit <https://dhr.delaware.gov/training/certificate-programs/index.shtml>.

PHILADELPHIA TECHNICIAN TRAINING INSTITUTE

Philadelphia Technician Training Institute of 1901 West Girard Ave Philadelphia, PA is a trade school that offers knowledge and hands-on experience to prepare the students to meet the challenges of employment and in the process craft a career. Career trainings include:

- Welding Technology and Training
- Steam, Sprinkler, and Pipe Fitting
- Manufacturing and Automation
- Concreting, Masonry, and Framing
- Central Processing and Service
- Automotive Technology and Repair
- Drywall, Framing, and Finishing

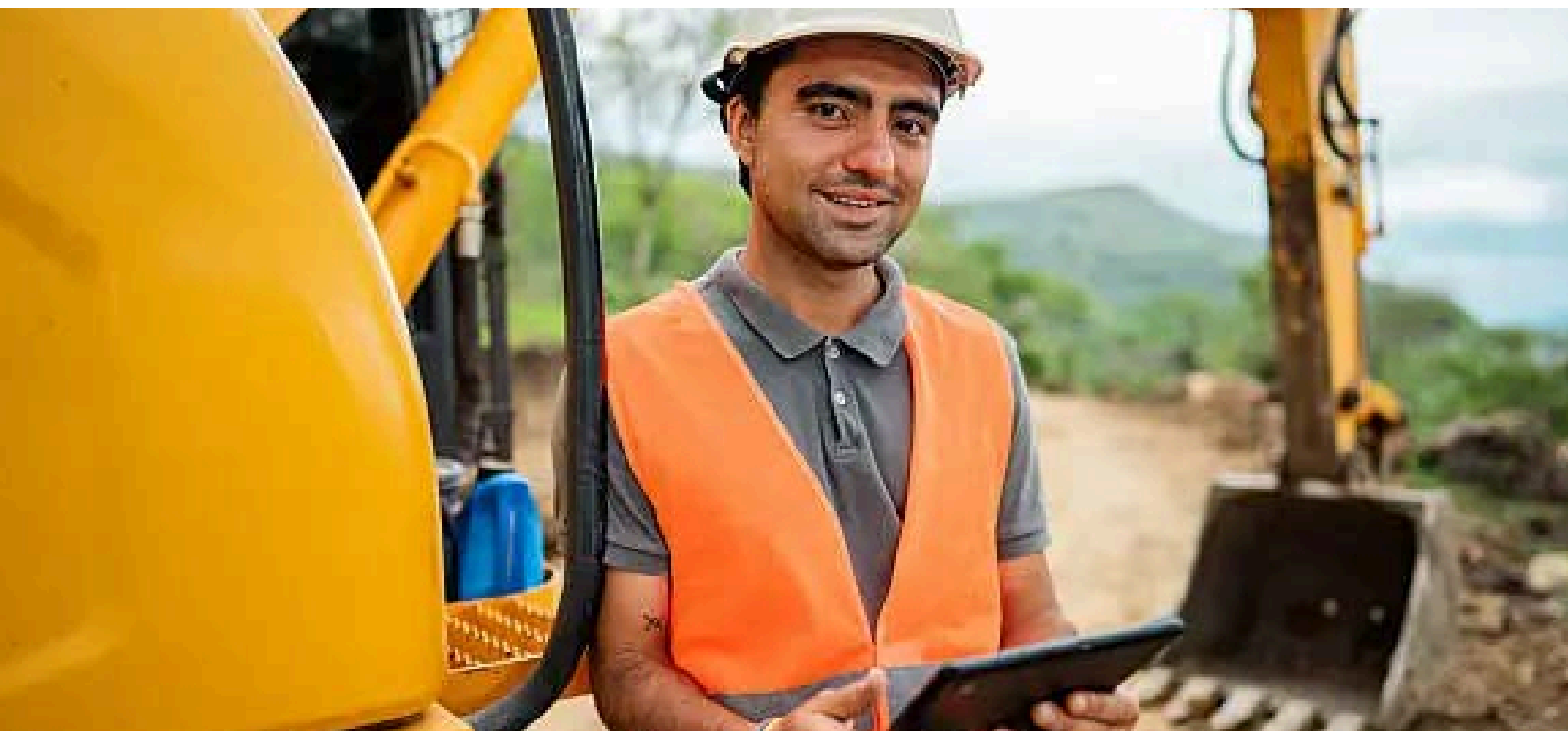
For more information and to apply, visit https://ptt.edu/programs/steam-sprinkler-and-pipe-fitting-technician-program/?utm_source=Bing&utm_medium=Bing&utm_campaign=bingads&mclid=c5ca3e24dab61387649d5432885e5b92.

PRE-APPRENTICESHIP

Delaware Division of Employment and Training partners with training programs across multiple trades. Training programs include, but are not limited to, The Challenge Program (Carpenter), Delaware Correctional Industries (Welder) and LEEP P2A Delaware (Construction Laborer Carpenter).

For a full list of training programs and to apply, visit <https://labor.delaware.gov/divisions/employment-training/apprenticeship-and-training/>.





CITY OF NEW CASTLE CAREERS

City of New Castle Delaware headquartered at 220 Delaware Street, New Castle, DE has Public Service Specialist and Equipment Operator career opportunities available. For job descriptions and to apply, visit <https://newcastlecity.delaware.gov/career-opportunities/>.

WILMINGTON POLICE DEPARTMENT

Wilmington Police Department is accepting enrollment for the next hiring for when the next hiring process begins. Those interested in a career with the Wilmington Police Department are encouraged to contact the WPD Human Resources Division at (302) 576-3170. For more information, visit <https://www.wilmingtonde.gov/government/public-safety/wilmington-police-department/join-the-wilmington-police-department>.

DRBA JOBS

Delaware River Bay Authority (DRBA) of Delaware Memorial Bridge Plaza, 2162 New Castle Ave., New Castle, DE. has jobs in Delaware and New Jersey with six full-time employees and two part-time employees. Openings include, but not limited to, are Administrative Assistant - Tolls, Maintenance Journeyman, Sr. Paralegal, Casual Maintenance Technician and Casual Airport Landside Operations Aide.

For a full list of job openings and job descriptions, visit <https://www.drba.net/jobs>.



FUNDRAISING & COMMUNITY ENGAGEMENT MANAGER

Survivors of Abuse in Recovery, Inc. (SOAR) is seeking a part-time Fundraising & Community Engagement Manager to lead fundraising growth, donor development, gala/event expansion, and social media visibility. The salary of \$30,000.00 to \$45,000.00 with hybrid options. For job description and next steps to apply, visit <https://alliance.delawarenonprofit.org/careers>.



YMCA DELAWARE IS RECRUITING

YMCA Delaware are recruiting for 36 positions in three locations of Wilmington, DE. Positions include full, part-time, and seasonal. See below for several available positions:

- Early Childhood Infant/Toddler Teacher-FT (6 weeks to 2 years old) - Central YMCA Family Location
- Camp Behavior Support Coordinator- Walnut YMCA Family Location
- Day Camp Unit Director- Walnut YMCA Family Location
- Health & Wellness Director (Fitness)- Central YMCA Family Location
- Kids Club Associate- Brandywine Location

For a full list in statewide locations, job descriptions and next steps to apply, visit <https://www.ymcade.org/ymca-careers/>.



BOYS & GIRLS CLUB OF DELAWARE

Boys & Girls Club of Delaware have 26 career opportunities across multiple departments in Wilmington, DE, as well as, statewide. Career opportunities include:

- Club Services Coordinator
- Program Quality & Outcomes Specialist
- Operations Database Systems Administrator
- Director of Program Quality
- Seasonal Aquatic Specialist -Swim Instructor
- Youth Development Professional
- Youth Activity Worker
- Youth Development Professional

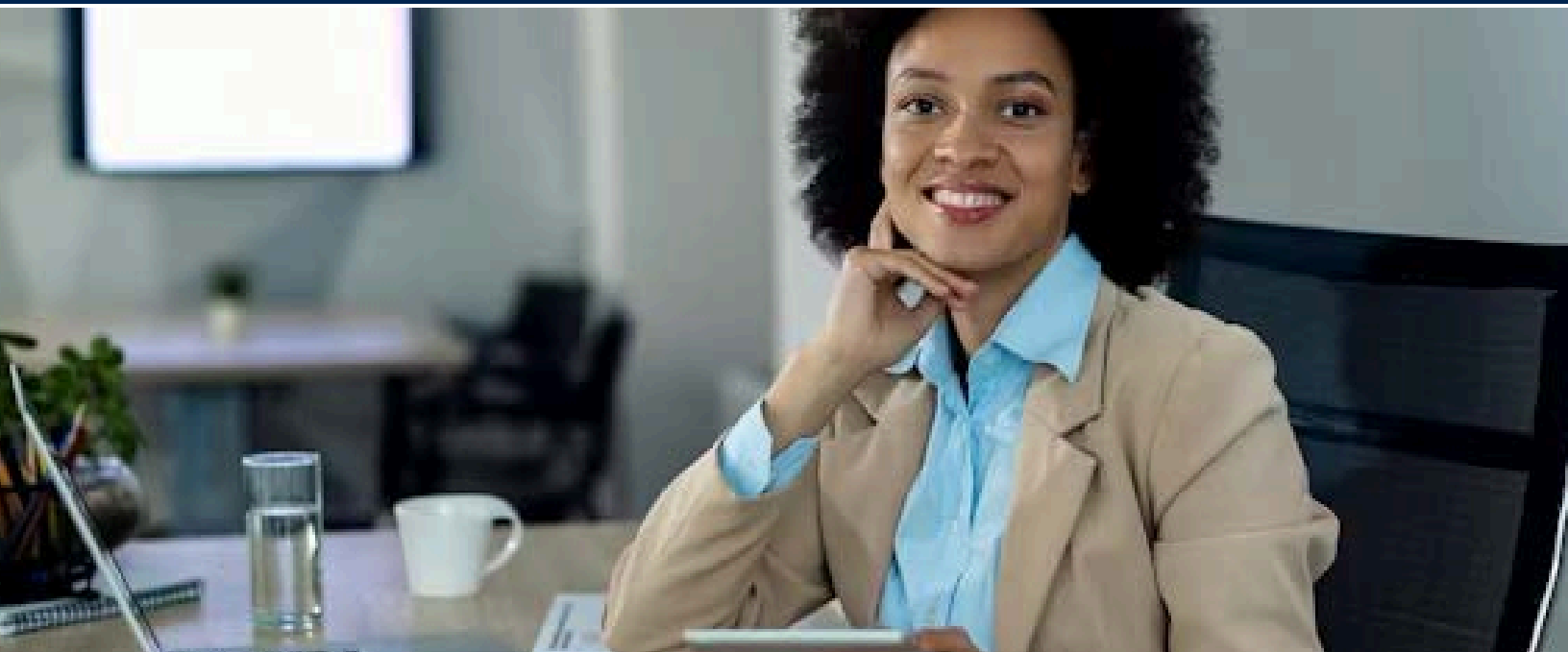
For job descriptions and next steps to apply, visit <https://www.bgclubs.org/delaware-career>.

CHILD, INC. OPENINGS

Child, Inc. of Delaware with headquarters at 507 Philadelphia Pike, Wilmington, DE has three positions available both part-time and full-time. Career opportunities include:

1. Family Visitation Counselor
2. Child/Youth Service Worker
3. Group Facilitator

For job descriptions and next steps to apply, visit <https://childinc.com/job-opportunities/>.



EXECUTIVE DIRECTOR JOB OPENING

Meals on Wheels Delaware of 200 Whitechapel Dr., Newark, DE has a full-time Executive Director opening with a salary range of \$90,000.00 to \$100,000.00 with flexibility. The Executive Director works in close partnership with an engaged Board of Directors and leads a team of five full-time staff members. For job description and next steps to apply, visit <https://alliance.delawarenonprofit.org/careers/Details/executive-director-332720>.

NEMOURS CHILDREN'S HEALTH CAREERS

Nemours Children's Health has career opportunities in Wilmington, DE in multiple departments and category types:

- Estate Driver
- Facilities Planner
- Clinical Trials Manager
- Paramedic
- EMT
- Patient & Family Representative
- Operations Analyst
- Care Coordinator
- Nursing Assistant
- EEG Technician

For a full list of opportunities, job descriptions and to apply, visit <https://www.nemours.org/careers.html>.

MANAGING DIRECTOR OF OPERATIONS OPPORTUNITY

Reading Assist of 100 West 10 Street, Suite 910, Wilmington, DE is on a search for a full-time Managing Director of Operations (MDO) hybrid with minimum of three days in the office. This is a critical executive role for a leader who thrives at the intersection of strategy, systems, and mission-driven work with a salary range of \$100,000.00 to \$130,000.00. For job description and next steps to apply, visit <https://alliance.delawarenonprofit.org/careers>.

DELAWARE COMMUNITY FOUNDATION IS HIRING

Delaware Community Foundation of 100 W. 10th Street, Suite 704, Wilmington, DE are hiring a part-time Accounting Associate at a rate of \$18.00 To \$24.00 per hour.

For job description and to apply, visit https://workforcenow.cloud.adp.com/mascsr/default/mdf/recruitment/recruitment.html?cid=eed70204-fbd5-4507-8113-b77e59dc4a6b&cclId=46778166_2&lang=en_US.

RESTORATIVE SERVICES SPECIALIST

Delaware Center for Justice of 100 W. 10th St., Suite 905, Wilmington, DE. Full-time Restorative Services Specialist career opportunity available in New Castle County. For more listings in Kent and Sussex and to apply, visit <https://dcjustice.org/digital-career-fair/>.



DSHA HAS OPENINGS

Delaware State Housing Authority (DSHA) has a Facility Maintenance Mechanic II in Smyrna, and two others in Dover SRAP Housing and Recertification Specialist and Housing Manager Assistant.

For more information, job descriptions and to apply, visit <https://www.destatehousing.com/about/careers/>.

ARBOR MANAGEMENT IS HIRING

Arbor Management has positions available statewide. New Castle County positions include:

- Occupancy Specialist - Stoneybrook (Part-time)
- Maintenance Technician - Stoneybrook

Visit <https://www.arbormanagement.com/careers>, for job descriptions and to apply.



BRANDYWINE NURSERIES CAREERS

Brandywine Nurseries of 4 James Court, Wilmington, DE has two opportunities available, a Landscape Design/Architect and Landscape Foreman. For more information, job descriptions and to apply, visit <https://www.brandywinenurseries.com/join-our-team>.

HOME DEPOT OPPORTUNITIES

Home Depot has 15 positions available across three locations of Wilmington, Claymont and New Castle. Openings are in several departments including:

- Kitchen Designer
- Sales Specialist
- Customer Service/Sales

For more information and to apply, visit <https://careers.homedepot.com/>.

LOWES IS HIRING

Lowes of 2225 Hessler Dr., New Castle DE has a Seasonal Retail Sales Associate. For more information, job descriptions and to apply, visit <https://talent.lowes.com/us/en/wilmington>.

DOLLAR TREE OPENINGS

Dollar Tree has nine openings over eight stores in Wilmington, DE. One Assistant Manager I and eight Customer Service I opportunities. For more information, job descriptions and to apply, visit <https://careers.dollartree.com/us/en/search-results>.

GOLDEY BEACOM OPENINGS

Goldey Beacom College of Wilmington, DE has three Staff positions and seven Faculty positions available. Openings include, but not limited to:

- Admissions Recruiter
- Lead Custodian
- Adjunct instructors for multiple departments

For job description and next steps to apply, visit <https://www.gbc.edu/career/>.

FIRST STATE MONTESSORI ACADEMY OPPORTUNITIES

First State Montessori Academy has two opportunities available:

- Substitute K - 6th grade Teachers
- Substitute Nurses

Visit <https://firststatemontessori.org/jobs/>, for job descriptions and to apply.



UNIVERSITY OF DELAWARE IS SEEKING TALENT

University of Delaware of Newark, DE. has 94 faculty and staff career opportunities. Work types available and number of positions available AFSCME (4), Faculty (20) and Staff (70) in a variety of department and requiring an array of skill sets. For a full listing of talent being sought and job descriptions, visit <https://www.udel.edu/faculty-staff/human-resources/careers/>.

DSU IS RECRUITING

Delaware State University of 1200 N. Dupont Highway, Dover, DE are hiring for 18 positions throughout their university. Included in openings are:

- Academic Advisor
- Adjunct - Occupational Therapy Program
- Administrative Secretary
- Admissions Counselor
- Early Literacy Coach
- Graduate Admissions Coordinator

For job descriptions and to apply, visit <https://www.schooljobs.com/careers/desu>.

PAL OF WILMINGTON HEAD TEACHER

PAL of Wilmington is now accepting applications for a full-time Head Teacher in the Early Learning Center at 3707 N. Market Street, Wilmington, DE. This position is Monday through Friday 7:00 AM to 6:00 PM. For job description and next steps to apply, visit <https://palw.org/get-involved#employment-opportunities-anchor>.

WILMINGTON UNIVERSITY OPENINGS

Wilmington University of 320 N. Dupont Highway, New Castle, DE has three staff and faculty openings along with 17 adjunct faculty.

For job descriptions and to apply, visit <https://www.wilmu.edu/careers/index.aspx>.



INGLESIDE HOMES RECRUITMENT

ingleside Homes of 1005 N. Franklin Street, Wilmington, DE has cook and Hostess/Server positions available.

Visit <https://www.visitingangels.com/dover/employment>, for job descriptions and to apply.



IVY REHAB CAREER OPPORTUNITIES

Ivy Rehab has eight career opportunities over Newark and Wilmington locations. Opportunities include Pediatric Speech Language Pathologist - PRN, Physical Therapist, Occupational Therapist - PRN Pediatric Outpatient and Senior Director of Business Development (Pediatrics) - Remote. For job descriptions and to apply, visit https://ivyrehab.wd5.myworkdayjobs.com/en-US/Ivy_Rehab?q=Wilmington,%20DE.

DISCOVERY MANAGEMENT GROUP IS HIRING

Discovery Management Group is hiring for positions at The Summit of 5850 Limestone Rd., Hockessin, DE. Ten openings include Servers, Case Managers, Activities and Event Coordinators, Cook and Sales Associate/Move-In Coordinator. For a job descriptions and to apply, visit <https://discovery-management-group.oasisrecruit.com/>.

SUNRISE SENIOR LIVING

Sunrise Senior Living of 2215 Shipley Rd., Wilmington, DE has three openings for cook, server and housekeeper.

For job descriptions and to apply, visit <https://uscareers-sunriseseniorliving.icims.com/jobs/search?ss=1&searchLocation=-12792-Wilmington>.

COMPLETE CARE HAS OPPORTUNITIES

Complete Care at Hillside, located at 810 S Broom St, Wilmington, DE has over six healthcare employment opportunities:

- Receptionist
- Registered Nurse, Unit Manager
- Certified Nursing Assistant
- Registered Nurse
- RN Nurse Practice Educator Infection Preventionist
- Licensed Practical Nurse

Visit <https://completecarehillside.com/careers>, for job descriptions and to apply.

SENIOR LIVING COMMUNITY OPPORTUNITIES

Ivy Creek Gracious Retirement Living of 300 Franklin Dr., Glen Mills, PA has three career opportunities Cook (Full-Time + Benefits) - \$1,000.00 Retention Bonus, Servers (Part-Time) and Duty Supervisor (Full Time). To apply and for job descriptions, visit <https://seniorlivinginstyle.com/careers/>.

PM HOTEL GROUP OPENINGS

PM Hotel Group has openings at Double Tree by Hilton location in Wilmington, DE. Below are available openings:

- Executive Housekeeper
- Housekeeping Houseperson
- Housekeeping Room Attendant
- Line Cook

For job descriptions and to apply, visit <https://www.bing.com/jobs?q=Double%20Tree%20by%20Hilton,%20Wilmington,%20DE%20careers&L2=true&rb=0&rc=20&scp=0&c=1&ftip=0>.

ARG RESTAURANT CAREERS

Atlas Restaurant Group (ARG) has locations statewide, with five being in Wilmington, DE. There are 12 opportunities, see below:

- Server (two)
- Line Cook (three)
- Bartender (three)
- Sou Chef (two)
- Executive Chef
- Dishwasher

Visit <https://atlasrestaurantgroup.com/properties?location=delaware>, for full list of opportunities, job descriptions and to apply.

HARBOR CHASE CAREER OPPORTUNITIES

Harbor Chase Senior Living of 2004 Shipley Rd., Wilmington, DE has three career opportunities. The openings are Waitstaff, Care Partner and Licensed Practical Nurse. For job descriptions and to apply, visit <https://www.harborchase.com/hra-careers/>.

METHOD CO. IS HIRING

Method Hospitality Company, owner of The Quoin Hotel of 519 N. Market Street, Wilmington, DE are hiring for the following:

1. Bartender
2. Line Cook
3. Front Desk Concierge
4. Maitra D'

Visit <https://www.methodco.com/thequoin/>, for job descriptions and to apply.



YONA SOLUTIONS OPPORTUNITIES

Yona Solutions of 810 Broom St., Wilmington, DE has two career opportunities in Wilmington, DE. The openings are full-time for a Food Services Director and Environmental Services Director. For job descriptions and to apply, visit <https://www.yonasolutions.com/jobs-board>.

HOMEGOODS SUPERVISOR

HomeGoods of Concordville Town Centre, 501 Town Center Dr., Glen Mills, PA has a full-time Retail Supervisor career opportunity. The hourly rate for this position is \$16.00 to \$16.50 per hour. For job description and to apply, visit https://www.ziprecruiter.com/jobs-search?search=retail+associate&location=Wilmington%2C+DE&radius=5&days=5&refine_by_employment=&refine_by_location_type=&refine_by_salary=&refine_by_salary_ceil=&refine_by_apply_type=&refine_by_experience_level=&lk=BDns8mGuWWZBXBY1O1sIQ.

MACYS SALES ASSOCIATE

MACYS of Christiana Mall, Newark, DE has an opening for a full-time Retail Sales Associate with an hourly rate of \$15.00 to \$19.51 per hour. Visit https://www.ziprecruiter.com/jobs-search?search=retail+associate&location=Wilmington%2C+DE&radius=5&days=5&refine_by_employment=&refine_by_location_type=&refine_by_salary=&refine_by_salary_ceil=&refine_by_apply_type=&refine_by_experience_level=&lk=RsdEpyX4alkyTfhHbyiY-Q, for job description and to apply.

GAP, INC. OPPORTUNITIES

GAP, INC. has five opportunities in Newark and Wilmington, DE with three at Old Navy and two at Athleta. Old Navy has three Retail Sales Associates with one being full-time and Athleta has a Retail Associate and Assistant Manager opportunities. For a job descriptions and to apply, visit <https://www.gapinc.com/en-us/careers/old-navy-careers>.

TARGET IS HIRING

Target is hiring for multiple departments over three stores in Newark and Wilmington, DE. Departments include security, retail and management. For full list of openings, job descriptions and to apply, visit <https://corporate.target.com/careers/career-areas>.

DUNKIN' DONUTS OPENINGS

Dunkin Donuts has three Wilmington and three New Castle opportunities:

- Shift Leaders (two)
- Crew Members (two)
- Team Member (one)
- Baker/Finisher (one)

For more openings in other areas of the organization and to apply, visit https://careers.dunkindonuts.com/jobs?location_name=Wilmington%2C%20DE&location_type=1.

CUSTOMER SERVICE ASSOCIATE CAREERS

WAWA has three Customer Service Career opportunities at three Wilmington, DE locations. Visit <https://www.wawa.com/>, for job descriptions and to apply.

STARBUCKS CAREER OPPORTUNITIES

Starbucks of New Castle and Wilmington, DE has seven openings over four locations. Career opportunities include:

- Barista (three)
- Shift Supervisor (four)

For job descriptions and to apply, visit <https://careers.starbucks.com/>.





CONSTITUTION YARDS IS HIRING

Constitution Yards at Wilmington's Riverfront, 303 Justison St, Wilmington, DE are hiring. Opportunities include:

- Bartenders
- Line Cooks
- Porters

To apply, email your resume to Keith@constitutionyards.com.

WHITING - TURNER OPENINGS

Whiting-Turner has two openings in their Newark, DE. Openings include Schedule Engineer and Environmental Health & Safety Manager. Visit <https://www.whiting-turner.com/careers/apply/>, for job descriptions and to apply.

PETROLEUM TRANSPORTERS IS RECRUITING

Petroleum Transporters are recruiting for CDL drivers, fleet mechanic, clerical, customer service and dispatch out of 1 North White Horse Pike, Hammonton, NJ. For job descriptions and to apply, visit <https://coraluzzo.com/careers/>.

DELAWARE LIMO CAREERS

Delaware Limo of 2323 N. Dupont Hwy. Building B New Castle, DE. Positions include:

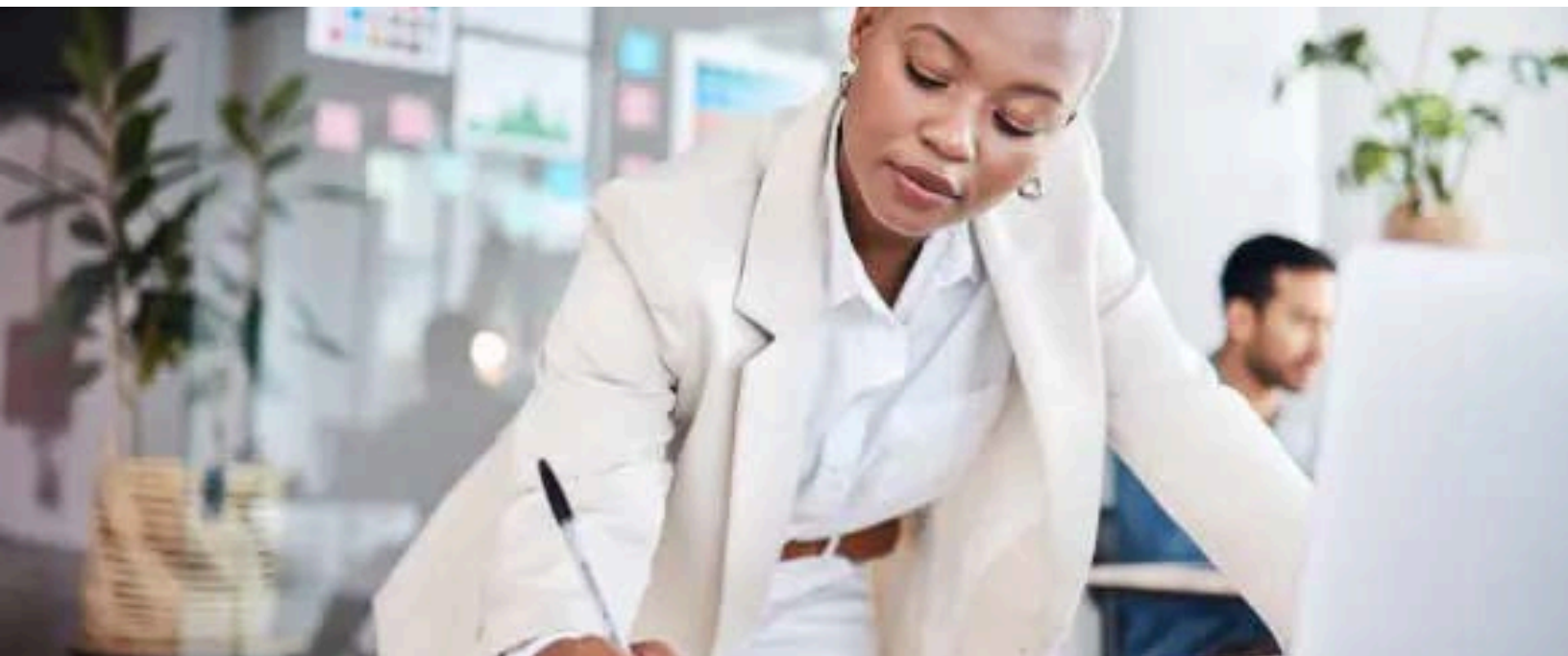
- CDL Driver - \$24.00 to \$47.00 per hour
- Chauffer - \$20.00 to \$24.00 per hour

For job descriptions and to fill out an application, visit <https://delaware.limo/careers>.



BOULDEN BROTHERS OPENINGS

Boulden Brothers of 107 Sandy Drive, Building 700, Newark, DE. Openings include Electrician, Plumber, Drain Technician, HVAC Installer and HVAC Service Technician. Visit <https://bouldenbrothers.com/careers/>, for job descriptions and to apply.



CITY OF WILMINGTON IS HIRING

City of Wilmington has six positions in various departments and job statuses. Opportunities include:

- Assistant City Solicitor
- Director of Community Safety
- Plans Examiner
- School Crossing Guards
- Settlement Clerk
- Signal Electrician CDL "B" License

For job description and to apply, visit <https://www.wilmingtonde.gov/government/city-departments/human-resources/apply-for-city-employment>.



STATE OF DE HAS OPPORTUNITIES

State of Delaware has a variety of over 200 positions available from entry level to skilled labor. Categories of openings include:

- Open Competitive (133)
- Casual/Seasonal (70)
- Exempt - non-merit (35)

For more information, job descriptions and to apply, visit <https://statejobs.delaware.gov/>.

CITY OF NEWARK IS RECRUITING

City of Newark is hiring for 11 positions in various departments and in various seasons based on opportunity. Opportunities include:

- Laborers
- Summer Camp Directors
- Summer Camp Counselor
- Lifeguards
- Swim Instructor
- Head Lifeguards
- Police Officer
- Sidewalk Sweeper
- Traffic Enforcement Technician
- Community Center Attendant
- Custodian

Visit <https://newarkde.gov/156/Employment> for job descriptions and to apply.



CITIZENS BANK OPPORTUNITIES

Citizens Bank of Wilmington, DE has two bank branch teller and manager positions available at both at 3900 Concord Pike and 919 N. Market Street.

For job descriptions and to apply, visit <https://jobs.citizensbank.com/>.



BLUE CROSS BLUE SHIELD CAREERS

Blue Cross Blue Shield of Delaware has three remote positions available:

- Government Specialty Pharmacy Director
- Director Pharmacy Supply Chain
- Director of Audit

For job descriptions and to apply, visit <https://bcbsa.wd1.myworkdayjobs.com/Careers?locations=5fa19831cfd80199155a719aae220404>.

M&T BANK OPENINGS

M&T Bank has over 50 openings across multiple departments and location in New Castle County.

- Lead Experience Strategist
- Collections Specialist I & III
- Corporate Trust Operations Specialist
- Wealth Client Service Associate
- Universal Banker
- Senior HR Business Partner
- Business Risk Manager III
- Senior Data Analyst - Digital

For job descriptions and to apply, visit <https://mtb.wd5.myworkdayjobs.com/MTB?locationRegionStateProvince=18b4cf9ddb4e4542a39614cb55b4dde7>.

TD BANK CAREERS

TD Bank of Delaware has 17 positions available in Wilmington, DE:

- Executive Assistant I
- Financial Advisor Associate
- Risk Manager I
- Small Business Banker II
- Compliance Business Oversight Manager

For job descriptions and to apply, visit https://td.wd3.myworkdayjobs.com/en-US/TD_Bank_Careers?locationCountry=bc33aa3152ec42d4995f4791a106ed09&locations=dafbf576c2d210009452aad5856b0000.

HIGHMARK HEALTH OPTIONS MEMBERS: YOU DESERVE A REWARD.



Healthy Rewards is one of your Highmark Health Options benefits. You or your child can earn rewards when you complete certain healthy activities. We'll tell you what healthy activities you qualify for based on your age, gender, and health conditions. You can earn \$10 to \$25 for each healthy activity, such as an annual wellness visit or a cervical cancer screening. Healthy activities for babies include a lead screening and baby wellness visits.

Take care of your health.

Sign up and see the rewards you can earn.

Scan, go online, or call today.

My.TheraPayRewards.com/HHO

1-866-469-7973 (TTY:711)





THE WILMINGTON HOUSING AUTHORITY IS ONLINE

The Wilmington Housing Authority posts regular announcements and events on our website as well as our Facebook, Instagram and LinkedIn pages. Scan the QR codes to visit our website (<https://whadelaware.org/>) and our social media pages.



WHA WEBSITE



WHA FACEBOOK
PAGE



WHA INSTAGRAM
PAGE



WHA LINKEDIN
PAGE



WHA YOUTUBE
CHANNEL



WHA TIKTOK
CHANNEL

For general questions, inquiries, and other information for Wilmington Housing Authority's Executive Director, Ray Fitzgerald, please contact Azsana Wing, Confidential Executive Assistant, at AWing@whadelaware.org.