

APRIL 2026

# ANNOUNCEMENTS

THE WILMINGTON HOUSING AUTHORITY'S MONTHLY UPDATES



## WHA MADISON GARDENS TOWNHOMES NO LONGER ACCEPTING APPLICATIONS

Madison Garden Townhomes is a low-income tax credit property owned and operated by Wilmington Housing Authority. Effective September 1, 2024, WHA will no longer be accepting preliminary applications. To check the status or make changes to existing applications or for questions regarding the application process, please contact the Management Office at 302-429-6700.

## THE WILMINGTON HOUSING AUTHORITY OFFERS AUTOMATED MESSAGING TO RESIDENTS

The Wilmington Housing Authority now provides automated text messages and phone calls to residents. These automated messages allow residents to receive updates, notices, and other resources in real time.

## INGLESIDE HOMES HAS IMMEDIATE OPENINGS

Ingleside Homes Retirement Apartments has immediate openings for studio and 1-bedroom apartments. Residents must be 62 years old or older. Monthly rent is 30% of monthly income and pays for all services at Ingleside, which includes:

- Three (3) meals daily
- Weekly housekeeping and maintenance
- 24-hour Security
- Life Alert Pendant
- All Utilities
- Social & Recreational Programs
- Social Services

For more information, contact Renata Maslowski at (302) 575-0250 ext. 2245.

## WELCOMING MELODY TAYLOR AS CHIEF OPERATING OFFICER

The Wilmington Housing Authority (WHA) is pleased to welcome Melody Taylor as its new Chief Operating Officer. With more than 24 years of public service, Taylor brings extensive experience in housing policy, civil rights enforcement, and operational leadership. Most recently, she concluded her tenure at the U.S. Department of Housing and Urban Development (HUD) within the Office of Fair Housing and Equal Opportunity (FHEO), where she served as Deputy Assistant Secretary for Policy and Legislative Initiatives and for Education and Outreach. In this role, she worked to ensure that housing policies were translated into meaningful, measurable outcomes for the communities they serve. Throughout her career, Taylor has remained deeply committed to advancing civil rights and expanding equitable housing opportunities for underserved communities.



*Pictured Above: Melody Taylor*

Taylor also served for 11 years as the FHEO Mid-Atlantic Regional Director, overseeing five HUD field offices across six states, including Delaware. During this time, she developed strong partnerships with housing authorities, state and local governments, and nonprofit organizations throughout the region. Her work focused on enforcing the federal Fair Housing Act, ensuring compliance with civil rights program requirements, and providing technical assistance and training to housing providers on accessibility standards and fair housing responsibilities. Through these efforts, Taylor helped strengthen fair housing practices and promote equitable access to housing across multiple jurisdictions.

Among her many accomplishments, Taylor served from 2021 to 2024 as the HUD-appointed Executive Director of the federal Property Appraisal Valuation Equity (PAVE) Interagency Task Force, established to address appraisal bias and its impact on generational wealth in historically underserved communities. In this role, she worked collaboratively with leaders from 13 federal agencies and stakeholders across the housing industry to develop a comprehensive action plan aimed at modernizing the appraisal process and advancing greater equity in housing markets. The experience further strengthened her ability to lead complex initiatives, coordinate cross-sector partnerships, and deliver measurable results.

As a native Delawarean, Taylor views joining WHA as a meaningful opportunity to serve the community she calls home. Her career began in the nonprofit sector advocating for fair housing and civil rights, followed by leadership roles in state and local government before advancing to senior leadership at HUD. As Chief Operating Officer, her initial priorities include listening and learning from staff and residents while strengthening operational fundamentals such as compliance, clear processes, and responsive customer service. She also plans to focus on improving coordination across departments and using data-informed decision-making to ensure residents receive consistent, high-quality housing services.

Looking ahead, Taylor is committed to building strong partnerships that enhance opportunities for WHA residents and support the agency's mission. She believes the housing authority plays an essential role not only in providing safe and stable housing, but also in connecting residents to resources that support long-term success and quality of life. By fostering collaboration, strengthening operational systems, and promoting transparency and accountability, Taylor looks forward to working alongside WHA staff, residents, and community partners to continue advancing equitable housing outcomes throughout Wilmington.

## SUPPORTING THE PEOPLE BEHIND THE MISSION: A SPOTLIGHT ON WHA'S HUMAN RESOURCES DEPARTMENT



*Pictured Above: Patricia Mengers*

The Human Resources Department at the Wilmington Housing Authority (WHA) plays a vital role in supporting the organization's workforce and ensuring the agency operates effectively and in compliance with applicable laws and policies. Led by Chief of Human Resources Patti Mengers, the department oversees key functions including talent acquisition and staffing, employee relations and support, compliance and policy administration, training and professional development, and benefits and compensation management. Through these core responsibilities, the HR team helps ensure WHA maintains a skilled, professional workforce capable of delivering high-quality services to residents and the community.

Supporting approximately 130 employees across the agency, the Human Resources Department provides a wide range of services that support both daily operations and long-term organizational success. The team manages recruitment and hiring processes, coordinates onboarding and training, administers payroll and employee benefits, and maintains compliance with federal, state, and local labor laws. In addition, HR oversees grievance processes, union compliance and negotiations, and the ongoing review and updating of the employee handbook. By maintaining accurate records and providing leadership with reliable workforce data, the department supports informed decision-making while ensuring confidentiality and accountability in all personnel matters.



*Pictured Above: Neela Word*

Human Resources also plays a central role in strengthening WHA's workforce through professional development, collaboration with leadership, and a focus on employee well-being. The department identifies and schedules training opportunities, provides interview training, maintains updated job descriptions, and helps staff explore career development pathways. HR works closely with managers and department leaders to support strategic hiring, effective onboarding, and staff retention, while promoting clear communication and fair workplace practices. These efforts help foster a positive and productive work environment where employees feel supported, respected, and motivated to contribute to the organization's mission.

Looking ahead, the department is focused on strengthening internal processes and building a culture where employees feel safe, heard, and supported. Current priorities include conducting comprehensive audits of HR functions, evaluating potential new payroll systems, and updating policies and procedures to ensure the department operates efficiently and effectively. Planned initiatives also include HR knowledge-sharing sessions, an Employee of the Month recognition program, and Years of Service acknowledgments to celebrate staff contributions. Demonstrating their commitment to professional excellence, Patti Mengers and HR team member Neela recently completed twelve weeks of evening coursework and successfully passed the SHRM Professional Certification exam—an achievement earned by only about 40 percent of first-time candidates. Their certification reflects the advanced knowledge and practical expertise required to lead and strengthen the department as it continues supporting WHA's mission of providing safe, quality housing and services to the Wilmington community.



## **WHA RESIDENT SERVICES HOSTS SUCCESSFUL JOB & RESOURCE FAIR**

Wilmington Housing Authority Resident Services Team recently hosted a successful Employment and Resource Fair on February 26th bringing together employers and community organizations to support residents and community members seeking employment and career development opportunities. The event welcomed over 49 participants, including 17 WHA residents and 32 community residents, and featured 31 employment and resource vendors representing a wide range of industries and services such as healthcare, workforce development, financial services, homebuying, education and training, and supportive community programs.

The event created valuable opportunities for attendees to engage directly with employers (some with on-the-spot interviews), explore current job openings, learn about training and certification programs, and access resources designed to support long-term economic stability. Conversations throughout the day highlighted the importance of connecting individuals not only to employment opportunities, but also to supportive services that help address barriers to employment and advancement.

Resident Services will continue to follow up with participating employers and attendees to assess job and resource outcomes, identify potential placements, and better understand any barriers that may impact employment success. These follow-up efforts will help measure the event's impact, strengthen partnerships with employers, and guide future workforce initiatives that promote barrier reduction, economic mobility, and self-sufficiency for WHA residents and the surrounding community.

Call today to begin preparing for your journey to self-sufficiency with WHA Resident Services Coordinators at 307-269-9126.

## IN LOVING MEMORY OF FORMER WHA BOARD MEMBER ROCHELLE GRIMES

It is with great sadness that the Wilmington Housing Authority acknowledges the passing of former WHA Board member and Herlihy resident, Rochelle Grimes. Rochelle was known throughout the community for her kindness, warm spirit, and the genuine care she showed to those around her. During her time as a Board member and resident leader, she demonstrated a strong commitment to her community and to the residents she represented. Rochelle will be fondly remembered by all who had the privilege of knowing and working with her. We extend our sincere condolences to her family, friends, and the Herlihy community during this difficult time.



*Pictured Above: Rochelle Grimes*

## WHA ENGAGES REGIONAL LEADERS AT 2026 ECONOMIC FORECAST LUNCHEON



Representatives from the Wilmington Housing Authority (WHA) recently attended the 2026 Economic Forecast Luncheon hosted by the New Castle County Chamber of Commerce, where regional business leaders, elected officials, and economic analysts gathered to discuss economic trends shaping the year ahead. The event provided valuable insight into rising business confidence, ongoing workforce shortages, and the need to attract new investment to sustain long-term growth in the region. Speakers also highlighted the importance of innovation across sectors such as technology, housing development, and workforce training, along with stronger collaboration between public agencies and private partners. Participation in events like this allows WHA to stay informed on economic developments that directly impact housing stability and employment opportunities for residents. Engaging with regional stakeholders supports WHA's mission to expand opportunities for low- to moderate-income families by fostering partnerships, supporting workforce pathways, and contributing to a resilient local economy that benefits the communities it serves.

## WHA STAFF SUPPORT COMMUNITY THROUGH WINTER COAT DRIVE

Wilmington Housing Authority (WHA) staff recently demonstrated their commitment to community service by participating in a Winter Coat Drive organized by the WHA Event Committee to benefit the Friendship House Clothes Closet. Employees generously donated coats and cold-weather items to help ensure individuals and families in the community have access to essential clothing during the winter months. While participation continues to grow with each initiative, the drive reflected the strong spirit of compassion and service shared among WHA staff. Efforts like this highlight how WHA employees extend the organization's mission beyond housing by supporting community partners and helping meet the basic needs of neighbors across the Wilmington area.





## WHA'S RAY FITZGERALD SERVES AS CELEBRITY CHEF TO SUPPORT SOJOURNERS' PLACE

Wilmington Housing Authority (WHA) was proud to support the annual pancake fundraiser hosted by Sojourners' Place, where WHA Executive Director Ray Fitzgerald volunteered his culinary talents as a guest Celebrity Chef. Held on March 14, 2026, at St. Mark's Lutheran Church, the event brought together community members for a morning of food, fellowship, and philanthropy. Proceeds from the fundraiser help Sojourners' Place continue its important work providing shelter, life-skills training, and long-term support for individuals striving to regain independence and stability. By participating in events like this, WHA reinforces its commitment to supporting organizations that share a common goal of strengthening the community and expanding opportunities for individuals and families working toward self-sufficiency.



*Pictured Above: Ray Fitzgerald*

## CELEBRATING WOMEN'S HISTORY WHILE STRENGTHENING TEAM ENGAGEMENT



Throughout the month of March, Wilmington Housing Authority (WHA) fostered a positive and engaging workplace environment by hosting a weekly Women's History Month Movie Day for employees. Each Wednesday, staff were encouraged to take a break from their daily responsibilities to enjoy films that highlighted the achievements, leadership, and lasting impact of women throughout history. With snacks provided and a welcoming atmosphere, the initiative created meaningful opportunities for staff to connect, reflect, and recharge. This effort not only honored the significance of Women's History Month but also reinforced WHA's commitment to supporting staff morale, promoting workplace wellness, and cultivating a culture of appreciation and inclusion.

## MARCH MOMENTUM: PREMIER RAPID HOUSING TEAM DELIVERS LIFE-CHANGING OUTCOMES THROUGH COLLABORATION

In March 2026, the DAHG Premier Rapid Housing Placement Team (PRHPT) demonstrated what is possible when dedication, compassion, and strong internal partnerships align with a shared mission. While placements are often measured in numbers, this month's successes reflect something far greater, real people gaining stability, dignity, and a place to call home.

At the core of these outcomes is a coordinated, cross-departmental effort that ensures individuals and families are connected to housing in the most efficient and supportive way possible. From intake to placement, collaboration between PRHPT staff, the Section 8 Team, and internal leadership continues to drive meaningful impact across the Wilmington community.



We are proud to recognize Wayne Jefferson, PRHPT Supervisor, for securing a successful placement for a former member of the armed services through the VASH voucher program. This achievement represents more than a housing placement; it marks a life-changing moment for a veteran who served our country and is now receiving the stability and support they deserve. Wayne's leadership, consistency, and compassion continue to set the standard for excellence within the team.

This success was made possible through the strong partnership with the Section 8 Team, whose seamless referral process and ongoing support ensured a smooth and timely placement. Together, this collaboration reflects WHA's commitment to honoring those who have served by providing safe, suitable, and affordable housing solutions.

Jennifer Harris, PRHPT, exemplified the team's commitment to serving all individuals in need, regardless of circumstance. In March, Jennifer assisted a walk-in client seeking housing support. Although the individual was not connected to a voucher program, she approached the case with urgency, professionalism, and care. Jennifer's work is a powerful reminder that PRHPT's impact extends beyond traditional pathways. Whether through formal referrals or direct community engagement, the team remains focused on ensuring access to stable housing for all.

We also recognize Bruce, whose recent placement reflects both efficiency and a deep commitment to participant-centered service. His ability to act quickly while maintaining a thoughtful and supportive approach was instrumental in securing safe and stable housing for a participant this month. Bruce's work highlights the importance of responsiveness in housing services, where timing can make a critical difference in outcomes. His efforts, supported by ongoing referrals and coordination with the Section 8 Team, underscore how collaboration strengthens every placement.

Closing out a strong month, Orlando Foreman delivered another impactful placement for a family in need. Known for his steady, patient approach, Orlando continues to bring focus and reliability to every case he manages. His work this March reflects the importance of consistency in achieving long-term success. Each placement represents a fresh start for families, and Orlando's continued contributions reinforce the team's ability to deliver when it matters most.

As momentum continues to build, the PRHPT remains committed to delivering results through collaboration, innovation, and compassion. Each placement is more than a milestone; it is a testament to what can be achieved when teams work together with purpose. Congratulations to Wayne Jefferson, Jennifer Harris, Bruce Eberly, Orlando Foreman, and the entire WHA and DAHG teams for an outstanding month of service and impact.

Those in need of successful placement into safe, affordable housing can reach the team by calling 302-429-6701 or email [dahgresource@whadelaware.org](mailto:dahgresource@whadelaware.org).



## PRHPT ADVANCES FAMILY HOUSING SOLUTIONS



*Pictured Above: Wayne Jefferson, team Supervisor*

In March 2026, our Premier Rapid Housing Placement Team (PRHPT) successfully housed over 7 families in safe, clean, and decent homes, despite the scarcity of affordable members in their commitment to Delawareans statewide with their resourceful efforts. March placements were primarily Wilmington Housing Authority (WHA) Housing Choice Vouchers as well as several self-pay clients and a veteran voucher client.

The Premier Rapid Housing Placement Team is dedicated to assisting individuals and families in Wilmington with housing placement. They offer services such as case management, barrier assistance, and rental navigation. Those in need of placement assistance can reach the team by calling 302-429-6701 or email [dahgresource@whadelaware.org](mailto:dahgresource@whadelaware.org).

By partnering with landlords, the team helps clients find suitable affordable housing options. These collaborations benefit landlords by aiding in tenant recruitment, ensuring property inspections meet safety standards, and facilitating secure monthly rental payments through a designated portal. To become a client or landlord partner, please contact 302-579-2925.

# MCMULLEN SQUARE NEW CONSTRUCTION TOWNHOMES AVAILABLE FOR PURCHASE

The Delaware Affordable Housing Group (DAHG), introduces McMullen Square Townhomes, one of Wilmington's premier new construction communities. McMullen Square, located in Northeast neighborhood of Wilmington, DE, offers spacious, three-story townhomes with three bedrooms and 2.5 bathrooms. These newly constructed townhomes boast modern style and coveted amenities, including multi-level living, eat-in kitchens, rear decks, and an oversized garage. Close to schools, and minutes from Wilmington's Train Station, I-95 and I-495, McMullen Square, provides unparalleled convenience. Depending on the lot, the buyers will have the option of a one or two-car garage, allowing for interior customization to suit individual preferences. McMullen Square townhomes come in two primary layouts ranging from 1,767 to 1,982 square feet. For more details on McMullen Square, visit <https://delawareaffordablehousinggroup.com/mcmullen-square-townhomes>.

For further information on purchasing one of the McMullen Square townhomes, contact Gary Williams, Associate Broker at Berkshire Hathaway Home Services Fox & Roach Realtors at [gary.williams@foxroach.com](mailto:gary.williams@foxroach.com).



*Pictured Above: Frontage of McMullen Square.*



*Pictured Above: McMullen Square Main Living Area, Kitchen, Bedroom, Den, and Deck*

# LUTHER TOWERS ACCEPTING APPLICATIONS FOR THE WAITLIST

Luther Towers of Wilmington is accepting applications for their waitlist for individuals 62 years old or older in their subsidized housing community of studio and 1-bedroom apartments. Experience the perfect blend of comfort and community. These newly renovated spacious apartments feature modern amenities and enjoyable on-site services such as a fitness center, library, computer lab, laundry facility, and inviting community spaces. With easy access to local shops, dining, and public transportation, everything needed is just moments away.



For more information, email [luthertowers@pkmanagement.com](mailto:luthertowers@pkmanagement.com) or call 302-652-3737. Visit <http://www.luthertowers.com/independent-living-apartments/> for more details and to apply.



## ONE-STOP SHOP ENVISION CENTER HOMEBUYER'S WORKSHOPS

The WHA One Stop Shop's (OSS) EnVision Center is hosting a Homebuyer's Workshop on May 14, June 11 and July 9, 2026, at 2:00 PM. The Homebuyer's Workshop is offered virtually every second Thursday of the month through Microsoft Teams.

For more information or to register, call the WHA OSS at 307-269-9126.

## ONE-STOP SHOP ENVISION CENTER WORKSHOPS

The WHA One Stop Shop's (OSS) Envision Center's overall mission is to serve as the catalyst for change for the achievement of "self-sufficiency" for all WHA residents as well as individuals living in the City of Wilmington. Below are the dates for the upcoming workshops. For more information on upcoming workshops, check your building's resource bulletin board or call 307-269-9126.

DATE	TIME	LOCATION	CONTACT PERSON	PRESENTATION
4/17/2026	1:30 PM	<b>Compton Apartments</b> 325 E. 5th Street Wilmington, DE 198021	Cynthia Concepcion	ChristianaCare CHW Breast Screening Program
4/17/2026	2:00 PM	<b>Compton Apartments</b> 325 E. 5th Street Wilmington, DE 19801	Michelle Powell	Neighborly home care
4/17/2026	2:30 PM	<b>Compton Apartments</b> 325 E. 5th Street Wilmington, DE 19801	Kelsey Eulert	Ingleside Home Care
4/17/2026	3:00 PM	<b>Compton Apartments</b> 325 E. 5th Street Wilmington, DE 19801	Anita K. Bruce	Omni Youth Circle
4/26/2026	1:30 PM	<b>Herlihy Apartments</b> 320 E. 5th Street Wilmington, DE 19801	<i>Sabrina Perry</i>	AmeriHealth Caritas
4/26/2026	2:00 PM	<b>Herlihy Apartments</b> 320 E. 5th Street Wilmington, DE 19801	Cynthia Concepcion	ChristianaCare CHW Breast Screening Program
4/26/2026	2:30 PM	<b>Herlihy Apartments</b> 320 E. 5th Street Wilmington, DE 19801	Michelle Powell	Neighborly home care
4/26/2026	3:00 PM	<b>Herlihy Apartments</b> 320 E. 5th Street Wilmington, DE 19801	Abena Frimpong	Legacy Financial Legacy Associate (Life Insurance)

## RESIDENT SERVICES MONTHLY WORKSHOPS

One-Stop Shop EnVision Center January 2025 Workshops provided WHA Residents with resources to assist their path of self-sufficiency. Workshops included healthcare resources, insurance resource, smoking cessation and health screening.

For more information on WHA One-Stop Shop EnVision Center workshops or to discuss partnerships for future workshops, call 307-269-9126.



## WILMINGTON DMV APPOINTMENT SYSTEM

The Delaware Division of Motor Vehicles (DMV) have resumed operations at its Wilmington location. Service will be by appointment only to help manage customer volume in the facility. Appointments can now be made online at <https://appointments.dmv.de.gov/> or call 302-744-2500. The Delaware City DMV will continue to offer walk-in service to customers.

## FREE DIGITAL MEDIA

Hoopla is a free digital media service offered by Delaware Public Libraries that allows you to borrow movies, music, audiobooks, eBooks, comics and TV shows to enjoy on your computer, tablet, or phone and even your TV. Use your Delaware Public Libraries Card to borrow digital media.

For more information on Hoopla, visit <https://lib.de.us/hoopla/>. Sign up for a card at no cost at <https://lib.de.us/librarycard/>.

## LEARNING EXPRESS LIBRARY

Learning Express Library is a free resource for test preparation, skill building, and career resources for students, educators, and adult learners. This resource is for both professional and personal use.

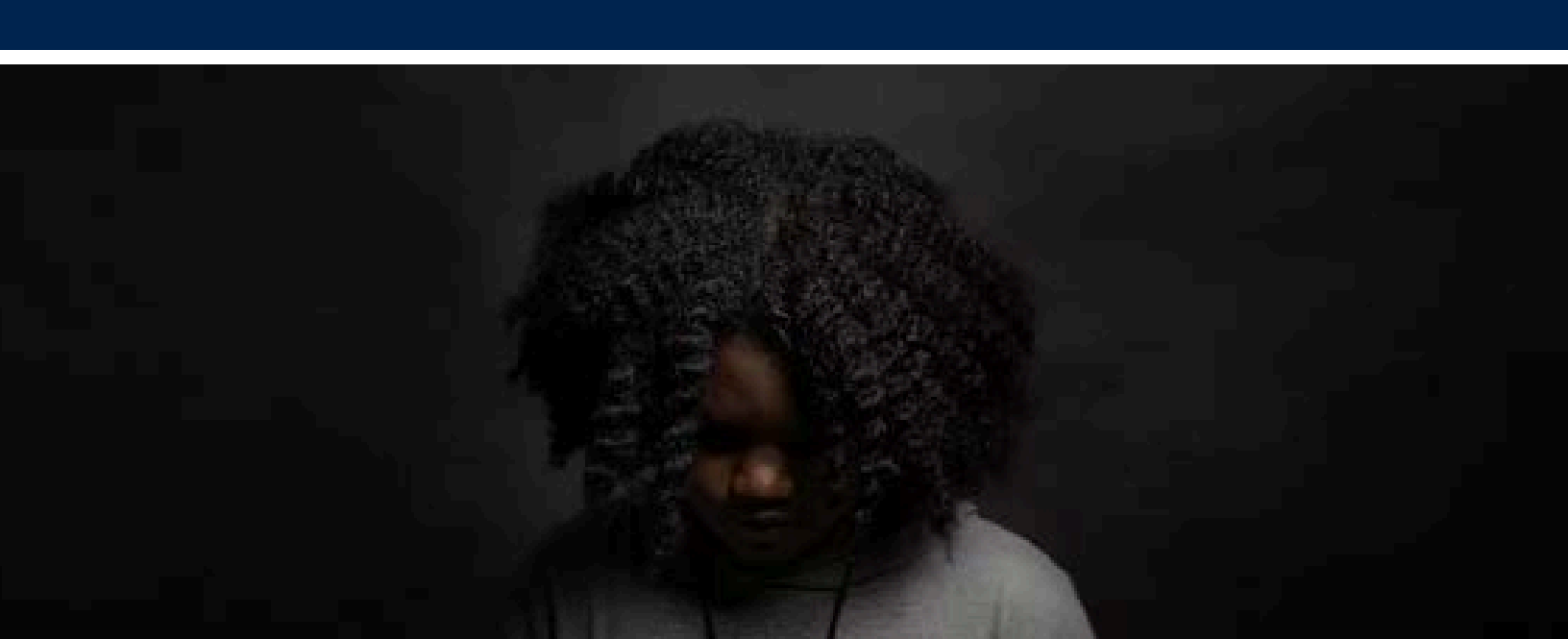
For more information and a link to the Learning Express database, ask your local librarian or visit <https://lib.de.us/learningexpress/>.



## FREE BIKE PROGRAM

Urban Bike Project's Free Bike Program provides refurbished, utilitarian bicycles to Wilmington area adults in need for transportation and recreation. The program also provides locks, helmets, lights, and other commuter accessories such as fenders and racks upon request (when available).

For more information and next steps to register, visit <https://www.urbanbikeproject.com/programs/free-bike-program/>.



## BEHAVIORAL HEALTH CONNECTIONS

DHSS has several ways for individuals to connect to behavioral health needs:

- Call the 24/7 Delaware Hope Line at **1-833-9-HOPEDE** or **1-833-946-7333** - a single point of contact where callers can connect to a variety of resources and information, including support from clinicians and peer specialists plus crisis assistance.
- Stop by one of DHSS' Bridge Clinics for an in-person assessment. Visit <https://www.helpisherede.com/> to locate a clinic.
- Visit <https://www.treatmentconnection.com/> to find out which treatment providers are located near you in DE and nearby states.
- Call **988** if in crisis and needs immediate support.
- Call **911** if someone has overdosed and needs emergency medical attention.
- Visit <https://www.helpisherede.com/#start> to find Narcan training, get the medication through the mail, and download the **OpiRescueDE App**

## DELAWARE HOPE LINE

Delaware HOPE LINE is a free 24/7 coaching and support as well as links to mental health, addiction, and crisis services.

Call 1-833-9-HOPEDE (467333).

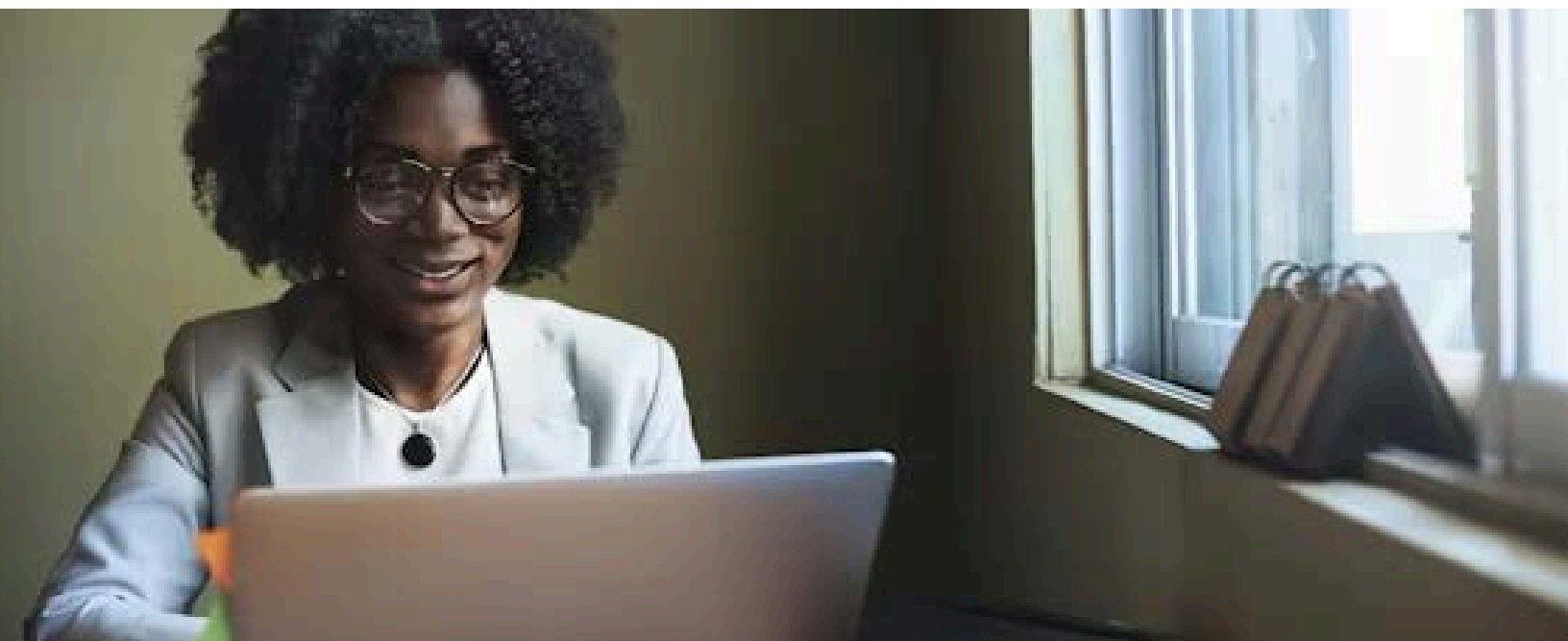
## FREE TRANSPORTATION FOR TREATMENT AND RECOVERY SUPPORT

To participate in this program, ask for a CPSU transportation referral in the emergency department or from EMS. Contact can also be made directly by calling 302-424-7267, Monday - Friday 8:00 AM to 4:30 PM or email [DSS\\_CPSU\\_Transportation@Delaware.gov](mailto:DSS_CPSU_Transportation@Delaware.gov). Emails will be addressed within 24-48 hours on the next business day.

## FREE MENTAL HEALTH EMERGENCY SERVICES AVAILABLE FOR CHILDREN & YOUTH

The Delaware Guidance Services for Children & Youth, Inc. in partnership with the Department of Services for Children, Youth, & Their Families offers mental health emergency services to children between the ages of 3 and 17 years old in the state of Delaware. Their skilled Crisis Intervention Clinicians come to wherever you are, whenever you need it, to provide crisis support. Services are available 24 hours a day/365 day a year. Call 1-800-969-HELP (4357) for immediate assistance. Visit <https://www.delawareguidance.org/> for more information.





## DELAWARE GUIDANCE SERVICES FOR CHILDREN & YOUTH, INC.

Delaware Guidance Services for Children & Youth, Inc. is Delaware’s largest provider of non-residential mental health services for children and families. Their trained clinicians are ready to help children and youth who may be experiencing anxiety, depression, stress, trauma and PTSD, and other behavioral or mental health concerns. Medicaid and all major insurance providers are accepted. For more information visit <https://www.delawareguidance.org/> or call one of the agency locations.

**WILMINGTON**  
(302) 652-3948

**NEWARK**  
(302) 455-9333

**DOVER**  
(302) 678-3020

**LEWES**  
(302) 645-5338

**SEAFORD**  
(302) 262-3505

## HIGHMARK REWARDS PROGRAM



### You deserve a reward.

Healthy Rewards is one of your Highmark Health Options benefits. You or your child can earn rewards when you complete certain healthy activities.



To sign up and see the rewards you can earn, go online or call:  
[my.therapyrewards.com/hho](https://my.therapyrewards.com/hho)  
1-866-469-7973



Scan to get started

### Reward activities can include:

\$15 Annual well-child visit (ages 3-19)	\$10 per visit/up to 8 visits Well-baby visit series (through age 30 months)	\$10 Lead screening (up to age 24 months)
\$15 A1c test for people with diabetes	\$15 Doctor visit after giving birth (up to 84 days after delivery)	\$25 Colorectal cancer screening
\$25 Cervical cancer screening	\$15 per fill/up to 6 fills Asthma controller medicine (age 18 and younger)	\$15 Retina exam for people with diabetes
\$15 Annual wellness visit (age 20 and older)	\$25 Breast cancer screening	\$15 Doctor visit after leaving the hospital

enabled by  
**heraPay**

Highmark Health Options (HHO) is an independent licensee of the Blue Cross Blue Shield Group or association of Independent Blue Cross Blue Shield Plans. HHO complies with applicable fair rights laws and does not discriminate on the basis of race, color, national origin, age, disability.

## ONLINE CAREGIVER SUPPORT

The State of Delaware has partnered with Trualta to expand support for families who care for aging adults, individuals with disabilities, and loved ones with complex needs. This platform is FREE and caregivers will never incur any costs, visit <https://delacares.trualta.com/> to register and obtain more information.



## LIFESPAN RESPITE GRANT PROGRAM

EasterSeals offers the Lifespan Respite Grant program to Delaware residents that are a senior or caring for a senior. One of the following requirements must be met:

- You are caring for someone 60 years of age or older
- You are caring for someone with Alzheimer's disease or a related disorder
- You are 55 years of age or older

Additionally, applicants must not receive respite funding through any other state source. All applications are processed in the order that they are received until funding is fully obligated.

For more information and to apply, visit <https://demd.easterseals.com/get-support/areas-of-support/caregiver-support/respite-services>.

## 55+ RESPITE GRANT PROGRAM

Easterseals Relative Respite Program is designed to support grandparents or other relatives who are raising children because the parent can no longer do so. If you are a Delaware resident 55 or older and raising children who are under 18, you may qualify for Easterseals Relative Respite Program. All applications are processed in the order that they are received until funding is fully obligated.

For more information and to apply, visit <https://demd.easterseals.com/get-support/areas-of-support/caregiver-support/respite-services>.



## RESPITE SERVICES

Easterseals offers case management services to individuals taking care of others. Respite is anything that gives a caregiver a break while someone else cares for your loved one. Email [resources@esdel.org](mailto:resources@esdel.org) or call 302-221-2087, for more information.

## HOPSCOTCH THERAPY FOR KIDS

Hopscotch Therapy helps families connect with licensed therapist for virtual sessions covered by their insurance. Visit <https://www.joinhopscotch.com/virtual-therapy?> for more information.

## FASFA ASSISTANCE

Stand By Me Financial Coaches are available to assist with FASFA (Free Application for Federal Student Aid) applications, at no cost. This financial assistance can be used for both college and trade schools where accepted. To schedule an appointment and for more information, visit <https://standbyme.org/stand-by-me-nexgen/fafsa/>.



## SPRING FAMILY RESOURCE FAIR

Child, Inc. of Wilmington is hosting a Spring Family Resource Fair in Wilmington at P.S. DuPont Middle School, 701 W 34th St, Wilmington, DE. The fair is taking place on Saturday, April 25, 2026, from 11:00 AM to 4:00 PM providing information including topics such as employment, housing assistance, safety & legal aid, nutrition, parenting tips and more.

## CREATIVE EXPRESSIONS

Amanecer Counseling & Resource Center of 301 N Van Buren St, Wilmington, DE hosts Creative Expressions art safe space. The first Thursday of each month from 6:00 PM to 7:30 PM individuals can visit this space to care for their emotional and mental well-being in a safe space through art. For planning purposes email [anna@amanecerde.org](mailto:anna@amanecerde.org), to register.

## WOMEN'S GRIEF SESSIONS

Rising Hope Therapy, LLC of 260 Chapman Rd., Suite 104A, Newark, DE offers women's grief group sessions in-person and on-line. For additional mental health group session options, program details and to register, visit <https://www.risinghopetherapy.com/groups-workshops> or call 302-273-3194.

## EMERALD LIGHTHOUSE LGBTQ+ SUPPORT

Emerald Lighthouse provides Life Skills; Group Supports and LGBTQ Trainings at their location of commonwealth Bldg., 260 Chapman Rd., Suite 104A, Newark, DE. Parent Support, Community Trainings and Outreach and Youth and Young Adult Support and Social Groups. One service being a drop-in group on the 1st Tuesdays of every month from 6:00 PM to 7:30 PM. Visit <https://www.theemeraldighthouse.org/>, for more information.



## H.O.P.E. HOUSE TRANSITIONAL RESIDENCE PROGRAM

Duffy's Hope, Inc. of Wilmington, DE has the H.O.P.E. Transitional Residence Program to support young women, ages 18 to 23-years of age, who are transitioning out of Delaware's foster care system. The program goal is to prevent youth homelessness by offering a safe, stable environment where each young woman can thrive. During this 12-to-18-month program, participants are provided housing as well as wrap around services to assist them to become self-sufficient. For more information and to apply, visit <https://www.duffyshopeinc.org/hopehouse>.

## DELAWARE TRANSITIONAL & REENTRY HOUSING

Delaware Housing Programs in New Castle County Delaware that assist individuals with justice involvement:

- Friendship House — Transitional Housing & Homeless Support Services
- House of Joseph II — Ministry of Caring
- Gateway — Recovery Housing Wilmington
- DEHAP — Delaware Housing Assistance Program
- Delaware 2-1-1 — Coordinated Housing Referrals

For more information and how to apply, visit <https://www.oacra.com/find-services/de-housing>.



## MINISTRY OF CARING HOUSING PROGRAMS

Ministry of Caring has long-term and holistic housing options for various household types, individuals, families with children and senior citizens. Visit <https://www.ministryofcaring.org/services/housing-options/> for more information and to apply.



## COMMUNITY RESOURCE DATABASE

FIRST Community Directory is a searchable database of community organizations and programs in Delaware managed by Family Informed Resource Support Team of the Department of Services for Children, Youth and their Families. Visit the directory dashboard at <https://kids.delaware.gov/first-community-directory/>.

## WARRIORS HELPING WARRIORS

Warriors Helping Warriors of 104 S. Broad St., Middletown, DE provides transitional housing and case management to male veterans and their families at two locations.

Visit <https://www.whwonline.org/> or call 302-696-2320, for more information.



## TRANSITIONAL HOUSING PROGRAM

Family Help, Inc. of Middletown, DE is an organization looking to help families needing assistance locating permanent housing. It is anticipated that the families can be stabilized and moved into permanent housing within twelve months or less.

Visit <https://familyhelpinc.wordpress.com/contact/>, for more information contact, Dr. Zelda Carter, Director, at 302-250-5461 or [zeldacarter2@gmail.com](mailto:zeldacarter2@gmail.com).

## LIFE LINES

Westend Neighborhood House of 710 North Lincoln Street, Wilmington, DE has the Life Lines Program that offers housing to current and former foster care youth, unaccompanied youth, as well as those who identify as LGBTQ+ between the ages of 16 to 18 for those in foster care and 18 to 23 years of age.

In addition to housing, youth are provided intensive case management and are assisted with educational and training programs, financial education, medication management, employment placement assistance, mental health services, general life skills instruction and more.

For more information and to register, visit <https://westendnh.org/programs/life-lines/> or call 302-658-4171.

## JC COMMUNITY KITCHEN

Peniel United Methodist Church of 115 E. Market St., Newport, DE has a weekly free lunch service open to the public from 11:00 AM to 2:00 PM. For more information, [penielumcsecretary@gmail.com](mailto:penielumcsecretary@gmail.com) or call 302-994-9519.



## ALDRERGATE UMC FOOD DISTRIBUTION

Aldersgate United Methodist Church at 2313 Concord Pike, Wilmington, DE hosts a monthly food distribution. Distributions are hosted on the fourth Friday, through October 23, 2026, 12:00 PM to 1:30 PM in the church parking lot.

## FOOD PANTRY & CLOTHING CLOSET

Expanded Branches Community Development Corporation located at 3301 North Market Street, Wilmington, DE offers both a food pantry and clothing closet for emergency assistance. The food closet is available Tuesday and Thursday 10:00 AM to 2:00 PM. The clothing closet is open Tuesday, 1:00 PM to 3:00 PM and Wednesday, 6:00 PM to 7:00 PM. For more information call 302- 762-8311 X 213.

## FAITH FOSTER CLOSET

Faith Foster Closet is located at Faith Presbyterian Church, 720 Marsh Road, Wilmington, DE to offer a free resource closet for foster families, foster youth, and kinship/legal guardians. The closet is stocked with diapers, wipes, gently used and new baby gear as well as toys, toiletries and books for all ages.

Open-shop hours one Saturday per month from 9:00 AM to 12:00 PM, for specific dates, visit the church event calendar at <https://faithwilmington.com/about-us/event-calendar/calendar/>. If transportation is an issue, families can also use a contact/request form, and our delivery team will bring the needed items out to the home.

For more information, visit <https://34682.monksites.com/connect/foster-closet/> or email [faithfostercloset@gmail.com](mailto:faithfostercloset@gmail.com).

## SCHOLARS TURF YOUTH LOUNGE

Scholars Turf Youth Lounge of 800 Vandever Ave, Wilmington, DE. offers afterschool enrichment, food pantry and a teen hygiene closet. For more information, call 302-307-1732.

## FOOD FOR SUCCESS FOOD PANTRY

First Presbyterian Church of 292 W. Main St., Newark, DE has a pantry where participants select the items needed. Upcoming dates are Monday, April 13, Friday, April 17 and Monday, April 27, 2026, from 4:00 PM to 6:00 PM. The pantry is housed in their Memorial Hall behind the church. For more information, visit <https://fpcplayground.org/food-for-success-ministry-starts/>.





## WARRIORS HELPING WARRIORS VOLUNTEERS NEEDED

Warriors Helping Warriors of Middletown, DE has two locations and accept volunteer assistance from individuals as well as groups. Volunteer hours could be for community service. Some ways help is needed include:

- Yard Work/Gardening
- Administrative, filing and phone skills
- Life skills education such as interview skills and resume writing
- Certified Counseling
- Building/Construction trade such as plumbing, HVAC, electrical (certified)
- Building construction skills such as spackling, painting and tile work
- Service Trade such as hair cutting
- Class/coaching such as yoga, martial arts and more

Visit <https://www.whwonline.org/get-involved>, for more information and to complete a volunteer form.

## DNS VOLUNTEERING OPPORTUNITIES

Delaware Nature Society (DNS) has multiple volunteer opportunities at multiple locations. Volunteer opportunities include specific events, groups and individuals. DNS's mission is to improve the environment through education, advocacy, and conservation.

For more information and registration visit <https://delawareaturesociety.org/get-involved/volunteer/>.

## URBANPROMISE VOLUNTEERS

UrbanPromise of Wilmington, DE offers one-time and recurring volunteer opportunities. From construction to computers, from cooking to mentoring, UrbanPromise will take a volunteer's availability and their interests and talents and find a unique opportunity for each person.

For more information and application, visit <https://www.urbanpromise.org/individual-opportunities> or email Bethany Gregor, Volunteer Director, at [bethany@urbanpromise.org](mailto:bethany@urbanpromise.org).

## UBP OF WILMINGTON VOLUNTEERING

Urban Bike Project (UBP) of Wilmington are seeking volunteers for various areas of their organization. There are a wide variety of volunteer roles and opportunities that will be available after orientation is completed. For volunteer opportunities and to sign-up, visit <https://www.urbanbikeproject.com/get-involved/volunteer/>.



## DTCC SUMMER CAMP

Delaware Technical Community College (DTCC) is offering summer camp at their Wilmington/Stanton Campuses. Financial Scholarships are offered for DTCC Summer Camps. For more information on summer camp details, call 302-453-3041 or email [sw-camps@dtcc.edu](mailto:sw-camps@dtcc.edu). For more information and to apply for a financial scholarship, visit <https://www.dtcc.edu/continuing-education/youth-programs/stantonwilmington/>.

## FREE BOWLING SIGN UPS

Kids Bowl Free registration is now open for your family at Main Event located at 2900 Fashion Center Blvd., Newark, DE for the summer of 2026. Two free games per day, per person. Bowling dates are April through October 2026, Monday through Friday, 9:00 AM to 5:00 PM with standard shoe rental rates.

For more information on programs and to register, email us at [support@kidsbowlfree.com](mailto:support@kidsbowlfree.com).



## NCC SUMMER CAMP REGISTRATION

New Castle County (NCC) Summer Camp registration is open. Camps will be available over an eight-week period from June through August 2026. Themes include sports, art, drama, cooking, Safety Town and more. There are full and half day options. For more information and to register, visit <https://www.newcastlede.gov/507/Camps> or call 302-395-5654.



## LACC BEFORE & AFTER CARE

Before and After School Community Learning Centers consist of two locations that serve students kindergarten through sixth grade. Bus stops for Red Clay School District, Academia Antonia Alonso, and Christina School District for The Bayard School and Pulaski Early Education Center. Program fee is \$135.00 per week with Purchase of Care (POC) and sliding fee scale for non-POC qualifiers.

For more information and enrollment, visit <https://www.thelatincenter.org/elementary-programs>.

## POLICE & PARAMEDIC SUMMER YOUTH PROGRAM

New Castle County Paramedic Department is hosting a Police & Paramedic Summer Youth Program from July 6 to July 17, 2026, Monday through Friday from 8:00 AM to 4:00 PM at FOP Lodge #5 at 2744 Red Lion Rd., Bear, DE. The program is for children ages 13 to 17 years old. Application end date is May 1, 2026. For more information and to apply, visit <https://www.newcastlede.gov/2462/Youth-Summer-Program>.



## SUMMER BASKETBALL LEAGUE

Duffy's Hope of 100 W 10th St #9, Wilmington, DE is offering a Middle School Basketball league for children 12 to 14 years of age. Try outs for the league are being hosted Sunday, June 22, 2026. For more information, call 302- 652-3532 or email [info@duffyshopeinc.org](mailto:info@duffyshopeinc.org).

## URBAN BIKE PROJECT SUMMER CAMPS

Urban Bike Project summer camps are available to area youth age 11-17 and give campers opportunities to use bikes to explore their communities, participate in community service projects, learn bicycle mechanics, and challenge themselves with exciting outdoor adventures. Camp opportunities:

- GirlCYCLE
- BUILD-A-BIKE
- Advanced Bike

Camp fee is \$275.00 per week and includes lunch and snack each day, activity fees, materials, end-of-camp barbecue for campers and their families. There are also scholarship and financial assistance options.

For more information and to register, visit <https://www.urbanbikeproject.com/summercamp/>.

## LIGHTS, CAMERA, LEARN PROGRAM

DETV Foundation of 1105 N. Market Street, Wilmington, DE is hosting the Lights, Camera, Learn STEM & Media Out-of-School Time (OST) Program. Participants must be ages 11 to 14-year-old Middle school students and Wilmington residents.

The program is meetings are twice per week at DETV Studios on Tuesdays and Thursdays from 4:00 PM to 6:00 PM for a 12-week cohort of 10 participants.

Instructional includes:

- Filmmaking and camera operation
- Storyboarding and script development
- Lighting and audio fundamentals
- Digital editing
- Team-based storytelling
- Capstone media project

Projected future Co-horts:

- May - August, Podcast Production
- August - November, Lights, Camera, Learn
- November - February, Podcast Production
- Spring, Lights, Camera, Learn

For more information and to register, visit <https://app.detvch.com/widget/form/eDwLmGqH1SmK1mx0LbKd>.



## CITY OF WILMINGTON YOUTH CAREER DEVELOPMENT

The City of Wilmington has Youth Career Development program is open to all household income levels with a focus on youth from promise communities. The program has three Tracks as options: Workforce, Internship and Career Pathway.

For more information, contact Youth Career Development staff at 302-576-3822 or visit <https://www.wilmingtonyouthjobs.com/>.

## DTCC YOUTH PROGRAMS

Delaware Technical Community College (DTCC) through the division of Workforce Development and Community Education offers a variety of camps and pre-college activities through In-school, after-school and summer programs. Opportunities offered in their Wilmington/Stanton Campuses include:

- Trio
- Summer Camp
- Science Fair

For more information, visit <https://www.wilmingtonyouthjobs.com/https://www.dtcc.edu/continuing-education/youth-programs/stantonwilmington/>.

## NCC YOUTH WORKFORCE DEVELOPMENT PROGRAM

New Castle County (NCC) Youth Workforce Development Program positions are for income-eligible youth ages 14 to 21 years old. Working permits will be required for selected youth 17 years of age and younger. Auxiliary aids and services are available upon request to individuals with disabilities. Selected applicants will be paid \$15.00 per hour. Below is listing of some areas where openings are located:

- Coding
- Early Childhood
- Aquatics
- Agriculture
- Museums and Libraries
- Construction
- Health Careers

For job descriptions and next steps to apply, visit <https://www.newcastlede.gov/859/Youth-Workforce-Development-Program>.

## ONE VILLAGE ALLIANCE HAS INTERNSHIP

One Village Alliance of 31 W. 31st Street, Wilmington, DE has a Youth Ambassador Internship opening. For job description and to apply, visit <https://www.iamthevillage.org/copy-of-get-involved>.

## CAREER MOVES

Career Moves is a free on-line application and website tool designed to connect Delaware residents with a variety of local career opportunities, focusing on building in-demand skills. The app offers access to over 250 training programs across high-growth sectors like healthcare, IT, and manufacturing. Visit <https://www.careermoves.org/> or download the app for more information and enrollment.



## MENTAL HEALTH INTERNSHIP

Rising Hope Therapy of 260 Chapman Rd., Suite 104A, Newark, DE is offering mental health internship opportunities. In addition to hands on guidance, interns also have the following benefits and more:

- Opportunity to learn the blueprint in opening a private practice
- Assistance in registering for the National Counseling Exam and obtaining study methods and materials.
- The possibility of employment upon completion of the internship and graduate program w/ free supervision hours towards licensure.

For more information, job description and to apply, visit <https://jobs.gusto.com/postings/rising-hope-therapy-internship-program-0bd31df9-7ae7-44ed-815c-c7ab32584043>.

## EDIS INTERNSHIPS

EDIS offers Summer Internships to college students providing a diverse experience across various departments within the construction industry. Visit <https://www.ediscompany.com/careers/life-at-edis/> for more information and to apply.



## EXPUNGEMENT FAIRS

Expungement Fairs are being hosted 2:00 PM to 5:00 PM to educate about Adult Expungement Reform Act, Juvenile expungement reform and Delaware's new expungement process. Additionally, a limited number of one-on-one legal counseling services will be available to those that pre-register on a first come first serve basis. Two locations are Claymont Community Center on Monday, April 13, 2026, and Wednesday, April 29, 2026, at Kirkwood Library.

To register for Claymont, visit [https://docs.google.com/forms/d/e/1FAIpQLSfaF4bvjBGgGOGs4e1o44luN9XSjIOIk1NBAK\\_e8BfBVfWydA/viewform](https://docs.google.com/forms/d/e/1FAIpQLSfaF4bvjBGgGOGs4e1o44luN9XSjIOIk1NBAK_e8BfBVfWydA/viewform) and to register for Kirkwood Library, visit [https://docs.google.com/forms/d/e/1FAIpQLSeRdmaR4aqETzB6qMmTdN6e\\_HDmSoWQm4NgvWY76q4\\_HNMVA/viewform](https://docs.google.com/forms/d/e/1FAIpQLSeRdmaR4aqETzB6qMmTdN6e_HDmSoWQm4NgvWY76q4_HNMVA/viewform).

Contact the Office of Senator Darius Brown at [darius.brown@delaware.gov](mailto:darius.brown@delaware.gov) or 302-744-4199 for additional assistance.



## DELAWARE REENTRY EMPLOYMENT & WORKFORCE TRAINING

Workforce Centers & Employment Programs in New Castle County Delaware that offer opportunities to individuals with justice involvement:

- American Job Center
- Goodwill of Delaware - Job Training & Placement
- Delaware Department of Labor - Employment Services
- Delaware JobLink
- Delaware Technical Community College - Workforce Training

For more information and how to enroll, visit <https://www.oacra.com/find-services/de-employment>.

## NORTH AMERICAN TECHNICIAN EXCELLENCE TRAINING ACADEMY

North American Technician Excellence (NATE) has teamed up with Interplay Learning to create the NATE Training Academy, a new online training platform for HVACR technicians. NATE Training Academy is designed to provide technicians a way to train for NATE certification exams online at their own pace. The comprehensive online courses are all available on-demand and can be taken at any time. The interactive and immersive online courses include “field-like” 3D and VR simulations, videos, and knowledge checks. The online platform is part of NATE’s efforts to better support HVACR technicians. In addition to certifying technicians and recognizing their excellence within the industry, NATE is dedicated to technician development. For more information and to register, visit <https://natex.org/contractor/nate-training-academy>.

## WORKFORCE DELAWARE

Workforce Delaware is a database of resources related to apprenticeship programs, technical schools, and opportunities in the Building and Construction industry. For more information, visit <https://workforcedelaware.com/resources/>.

## DOL CAREER ASSISTANCE

Department of Labor (DOL) is hosting a free career assistance event at AmeriHealth Caritas Delaware Wellness Center at Glendale Plaza Shopping Center, 1142 Pulaski Hwy., Unit 6-A, Bear, DE. Services provided will be resumes, practice interviewing, resources and training opportunities.

The event will take place on Sunday, May 10, 2026 from 8:00 AM to 12:00 PM. For questions and event confirmation, call 302-525-3760 or email [acdememberengagement@amerihealthcaritasde.com](mailto:acdememberengagement@amerihealthcaritasde.com).

## MASSAGE THERAPY TRAINING

Healing Hands School of Massage of 4411 Summit Bridge Rd, Middletown, DE offers scholarships for their students. At the end of the 625 hours program students will be able to sit for the Massage and Bodywork Licensing Exam (MBLEx) governed by the Massage Therapy Board. Students are assisted with MBLEx prep and the application process for licensure and job placement. The next cohort is September 2026 to April 2027, with an application deadline of August 27, 2026.

Visit <https://www.careermoves.org/find-programs/massage-therapy>, call 302-897-9822 or email [info@hhschoolofmassage.com](mailto:info@hhschoolofmassage.com) for more details and next steps to apply.

## FOOD SERVICE & WAREHOUSING TRAINING

Food Bank of Delaware, 222 Lake Dr., Newark, DE is offering both Food Service & Warehousing Training at no cost. The training programs are completed in 14 weeks with tuition, meals, uniforms and supplies being free. The next classes will begin Monday, May 18, 2026.

For more information and to apply, visit <https://www.fbd.org/the-culinary-school/>, for culinary and <https://www.fbd.org/logic/> for warehousing and logistics.

## DELAWARE SKILLS CENTER

Delaware Skills Center, located at 500 Ships Landing Way, New Castle, DE is an adult vocational training center for unemployed or underemployed DE residents. Certifications are offered in the following career paths:

- Carpentry
- Certified Nursing Assistant
- Commercial Driver's License
- Computer Network Support
- Electrical Trades
- Heating Ventilation Air Conditioning
- Building Energy Technician
- Licensed Practical Nursing
- Plumbing
- Welding & Fabrication

For more information and enrollment, visit [https://www.deskillscenter.org/apps/pages/index.jsp?uREC\\_ID=3562644&type=d&pREC\\_ID=2401966](https://www.deskillscenter.org/apps/pages/index.jsp?uREC_ID=3562644&type=d&pREC_ID=2401966) or call 302- 654-5392.

## LEAD ABATEMENT TRAINING

Wilmington Housing Authority is recruiting participants for a 5-week Lead Abatement Training for a pathway into an environmental safety and construction remediation career. Compensation of \$15.00 per hour and light lunches during the training is provided as well as transportation. Job opportunities are available upon completion. Applicants must be 18 years of age or older and able to pass a FIT Test (respiratory mask safety requirement). Call today to begin preparing for your journey. For more information and to apply, email [wsouthall@whadelaware.org](mailto:wsouthall@whadelaware.org) or call 302-647-9549.





## AUTISM DELAWARE SCHOLARSHIPS

Autism Delaware awards the following post-secondary education scholarships to Delaware residents who are pursuing post-secondary education:

**The Daniel and Lois Gray Memorial Scholarship** for students enrolled at the University of Delaware who are pursuing a course of study that will lead to a career related to autism in the State of Delaware; To apply, visit <https://forms.office.com/pages/responsepage.aspx?id=ZsizQOGhNk6xTzLjAzBX0KpkmPTDeOIDoPOWk1di699UQ1ZLUk9OMzhMNVNWTjLLRVRJWTI0S003Vi4u&route=shorturl>.

**The Adult With Autism Scholarship** for adults with autism spectrum disorder who live in the state of Delaware and who are pursuing college or another post-secondary educational experience; To apply, visit <https://forms.office.com/pages/responsepage.aspx?id=ZsizQOGhNk6xTzLjAzBX0KpkmPTDeOIDoPOWk1di699UNU1ISVISQ0FQSZVDMFZMMETIVJUUYxNC4u&route=shorturl>.

**The Autism Teacher Certification Scholarship** for practicing Delaware teachers who are pursuing an autism certification. To apply, visit <https://forms.office.com/pages/responsepage.aspx?id=ZsizQOGhNk6xTzLjAzBX0KpkmPTDeOIDoPOWk1di699UMzkwQjdVVkJFWkdZQTdCVlHIRE5NUE04Sy4u&route=shorturl>.

The deadline to apply for the 2026-27 academic year is May 1, 2026. Awardees will be notified in June. For questions or additional information, email [scholarships@autismdelaware.org](mailto:scholarships@autismdelaware.org).

## EMPLOYMENT SUPPORTS

Goodwill offers a free Comprehensive Case Management program to men and women 18 years or older who meet required income guidelines. Participants will work one-on-one with a Family Resource Coordinator who will help guide and assist in Employment, Education, Transportation, Financial Literacy. To apply, visit <https://www.goodwillde.org/find-a-job/>.



## CEO RECRUITMENT

The Delaware Alliance for Nonprofit Advancement (DANA) a statewide membership association, is recruiting for a Chief Executive Officer position. The Chief Executive Officer (CEO) is the chief strategist, relationship builder, and organizational leader responsible for advancing the organization's mission, ensuring long-term financial sustainability and strengthening the nonprofit sector statewide.

For job description, and next steps to apply, visit <https://alliance.delawarenonprofit.org/careers/Details/chief-executive-officer-315602>. For inquiries, nominations, and applications, contact Cathy McGeever, Managing Partner, at 610-924-9100 or [cfmcgeeve@lambertassoc.com](mailto:cfmcgeeve@lambertassoc.com).

## GOODWILL DELAWARE OPENINGS

Goodwill Delaware of Wilmington, DE has eight positions available both part-time and full-time. Career opportunities include:

1. IT Experience Manager
2. Ecommerce - General Lister
3. Recruiter
4. General Processor - eCommerce
5. Job Coach - Workforce Development Specialist
6. Team Member and Client Relations Specialist
7. Retail Manager in Training - New Castle County
8. Director of Retail Operations

For job descriptions and next steps to apply, visit <https://www.goodwillde.org/careers-at-goodwill/>.

## KSI IS HIRING

Kent-Sussex Industries (KSI), of Milford and Georgetown, DE has career opportunities through the following positions: Case Manager, CDL and Non-CDL Drivers, Dietary Aide, Direct Support Specialist both full and part-time. For job descriptions and next steps to apply, visit <https://alliance.delawarenonprofit.org/careers>.

## AUTISM DELAWARE OPENING

Autism Delaware with offices in both Newark and Lewis, DE is seeking a full-time Behavioral Services Manager with a salary range of \$75,000.00 to \$90,000.00 Per Annum. This position is based out of Newark, DE. For job description and next steps to apply, visit <https://alliance.delawarenonprofit.org/careers/Details/behavioral-services-manager-315676>.





## LACC SPRING JOB FAIR

Latin American Community Center (LACC) Spring Job Fair will be held Saturday, May 9, 2026, from 11:00 AM to 1:00 PM. The location will be at the Black Box Theater at the Route 9 Library and Innovation Center 3022 New Castle Ave, New Castle DE 19720.

## HOUSING EMPLOYMENT AVAILABLE

Delaware State Housing Authority (18 The Green, Dover, DE) is hiring for three positions in a variety of departments. Those openings are:

- Accountant I
- Business Development and Lender Liaison
- Director of Financial Management
- Senior Social Services Case Manager
- Manager of Property Excellence
- Administrator, Site and Asset Management

For a full listing, Job descriptions and to apply, visit [https://www.destatehousing.com/about/careers/?utm\\_source=Delaware+State+Housing+Authority&utm\\_campaign=7a6d72234f-EMAIL\\_CAMPAIGN\\_9\\_26\\_2019\\_9\\_13\\_COPY\\_01&utm\\_medium=email&utm\\_term=0\\_3f8e686be9-7a6d72234f-578443049](https://www.destatehousing.com/about/careers/?utm_source=Delaware+State+Housing+Authority&utm_campaign=7a6d72234f-EMAIL_CAMPAIGN_9_26_2019_9_13_COPY_01&utm_medium=email&utm_term=0_3f8e686be9-7a6d72234f-578443049).

## ONE VILLAGE ALLIANCE HAS OPENINGS

One Village Alliance of Wilmington, DE has a Summer Camp Lead and Summer Camp Co-Lead opening. For job description and to apply, visit <https://www.iamthevillage.org/copy-of-get-involved>.

## SENIOR COMMUNITY SERVICE EMPLOYMENT

Goodwill offers The Senior Community Service Employment Program (SCSEP) that provides paid, part-time work experience for eligible persons in New Castle County. As well as fully subsidized employment opportunities, this program also provides participants with supportive services, training workshops, and help with finding long-term employment.

For more information and to apply, visit <https://www.goodwillde.org/find-a-job/>.

## BOARD MEMBERS BEING SOUGHT

Pushing Through of Wilmington, DE are seeking Board Members. For more information and to apply, visit <https://www.pushingthrough.org/join-our-team>.



## WORK A DAY, EARN A PAY PROGRAM

Work A Day, Earn A Pay (WADEAP) is a collaboration between Goodwill and the Delaware Department of Transportation in support of the Governor's #KeepDELitterFree initiative. This is an opportunity for those who have faced employment barriers to access well-paid work, which also has broader benefits for the state. The only requirement for this work is that candidates are ready, willing, and able to work for their pay. Visit <https://www.goodwillde.org/find-a-job/>, to apply.

## DELIVERY ASSOCIATE OPENING

Wilminvest Logistics LLC, of 1500 Johnson Way, New Castle, DE has a Delivery Associate non-CDL at a rate of \$22.00 to \$24.00 per hour.

For job description and to apply, visit <https://amazon-na.fountain.com/apply/amazon-delivery-service-partner/opening/delivery-associate-wilminvest-logistics-llc>.

## CUSTODIAN OPPORTUNITIES

New Castle County has 10 Day and Night Custodian opportunities over three school districts and a Charter School. For job descriptions and to apply, visit <https://www.applitrack.com/joindelawareschools/onlineapp/default.aspx?Category=Facilities&subcategory=Custodian>.

## SKILLED LABOR CAREERS

Flo Mechanical is a full service mechanical contractor with a variety of services. They are currently looking for workers with experience in Plumbing and HVAC system installation. For job descriptions and to apply, visit [https://www.ziprecruiter.com/co/Flo-Mechanical/Jobs/-in-Wilmington,DE?uuid=&radius=25&lk=MJll\\_myCrTafJ\\_Ci9V3-Q](https://www.ziprecruiter.com/co/Flo-Mechanical/Jobs/-in-Wilmington,DE?uuid=&radius=25&lk=MJll_myCrTafJ_Ci9V3-Q).

To fill out an application inquiry form, visit <https://www.flomechanical.com/careers>, and send your resume to [joes@flomechanical.com](mailto:joes@flomechanical.com).



## TRANSPORTATION RECRUITMENT

Colonial School District has Bus Drivers and Bus Aide substitute availabilities as casual seasonal status. Bus Aide salary is \$17.79 per hour and Bus Driver salary is \$27.37 per hour.

For job descriptions, other openings and to apply, visit <https://www.applitrack.com/colonial/onlineapp/default.aspx?Category=Transportation>.



## FAIRWINDS CHRISTIAN SCHOOL HAS OPENINGS

Fairwinds Christian School has openings for the 2026 - 2027 school year. The positions include:

- 4th Grade Teacher
- Middle and High School Math Teacher
- Substitute Teacher

To apply, visit

<https://www.fairwindschristianschool.com/employment-opportunities>.

## MIDDLE-SCHOOL BASED COUNSELOR RECRUITMENT

Children and Families first is recruiting for two full-time middle school-based counselors in Wilmington, DE. Current positions available in Skyline Middle School and Kurumba Academy. Visit

<https://recruiting.paylocity.com/Recruiting/Jobs/Detail/s/3849370>, for the job description and to apply.

## SCHOOL BASED JOBS DATABASE

ProCare Therapy has 107 job listings for Delaware schools in various career paths in multiple schools. Listings include Physical Therapist, Special Education Teachers, Paraprofessionals, Teacher's Assistants and more.

For job descriptions and to apply, visit <https://www.procaretherapy.com/school-jobs/>.

## BOYS & GIRLS CLUB IS HIRING

Boys & Girls Club is hiring statewide, in Wilmington and Claymont, there are 14 openings across various departments. Openings include Youth Development Professional, Childcare Director and Education Director. For job description and to apply, visit <https://recruitingbypaycor.com/career/CareerHome.action?clientId=8a7883d0843a56f5018463b7d186197b>.

## YMCA OF DELAWARE HAS OPENINGS

YMCA of Delaware has 32 openings in their three Wilmington locations of Brandywine, Walnut Street and Central. The openings include both full-time and part-time options. Examples of openings include Director Aquatic Operations, Day Camp Specialist, Day Camp Unit Director, Senior Day Camp Counselor, Group Exercise Instructor, Lifeguard, Early Childhood Teacher, Swim Lesson Instructor, Swim Coach and Assistant Facility Director. For job description, salary range and to apply, visit <https://recruiting.ultipro.com/YMC1010YMCAD/JobBoard/9ab3be82-7895-4efd-a55b-47d24e067f68/?q=&o=postedDateDesc&f4=TFWzF1jn8la0OaweD8b6sQ+f8SNVZOKIFKpvG01LvJ6Bg>.

## SCHOOL BASED EMPLOYMENT

The state of Delaware has 19 school districts and 23 charters offering a wide variety of employment opportunities. In the City of Wilmington area, there are over 380 opportunities. Current featured jobs across districts are:

- Business Manager
- High School Science Teacher (Chemistry/Integrated Science)
- High School Marketing Teacher
- High School Health and Physical Education Teacher
- School Psychologist

Visit <https://www.joindelawareschools.org/>, for a full listing, job descriptions and to apply. Additionally, obtain information on the various paths to become an educator.



## AMANECER RECRUITMENT

Amanecer Counseling and Resource Center is a Community-Based Behavioral Health Agency in Wilmington, DE are recruiting bilingual behavioral health professionals. There is currently an opportunity for a Behavioral Health Therapist (Masters Degree - Unlicensed).

Visit <https://amanecerde.org/jobs/>, for job description and next steps to apply.



## OUTPATIENT THERAPIST OPPORTUNITY

Delaware Guidance Services (1200 N. French Street, Community Education Building, 7th Floor, Wilmington, DE) has a part-time opening for an Outpatient Therapist - licensed opportunity. The position offers a flexible schedule at \$18.00 to \$75.00 per hour. For a job description and to apply, visit [https://www.ziprecruiter.com/jobs/delaware-guidance-services-for-children-4d8991c2/outpatient-therapist-licensed-prn-part-time-a0a11d01?enc\\_campaign\\_id=fd50a38a&lk=4GJHI-E5Aw5TsrHDGcMyiA&tsid=122218591](https://www.ziprecruiter.com/jobs/delaware-guidance-services-for-children-4d8991c2/outpatient-therapist-licensed-prn-part-time-a0a11d01?enc_campaign_id=fd50a38a&lk=4GJHI-E5Aw5TsrHDGcMyiA&tsid=122218591).

## LIFESTANCE HEALTH HAS OPENINGS

Lifestance Health providers has five openings in Claymont and seven openings in Wilmington. Openings include, but not limited to:

1. Licensed Marriage & Family Therapist
2. Licensed Clinical Social Worker
3. Clinical Testing Psychologist
4. Licensed Professional Counselor of Mental Health

For a full listing of openings in Delaware statewide, job descriptions and to apply, visit <https://careers.lifestance.com/>.

## BILINGUAL ACTIVITY TECHNICIAN

VitalCore Health Strategies has a full-time Bilingual (Spanish-Speaking) Activity Technician at Howard R. Young Correctional Institution in Wilmington, DE Monday through Friday, 8:00 to 4:30 PM. The hourly rate range is \$20.00 to \$22.00.

Visit [https://www.ziprecruiter.com/c/VitalCore-Health-Strategies/Job/Bilingual-\(Spanish-Speaking\)-Activity-Technician/-in-Wilmington,DE?jid=7253cd2942424ccf](https://www.ziprecruiter.com/c/VitalCore-Health-Strategies/Job/Bilingual-(Spanish-Speaking)-Activity-Technician/-in-Wilmington,DE?jid=7253cd2942424ccf), for a job descriptions and to apply.

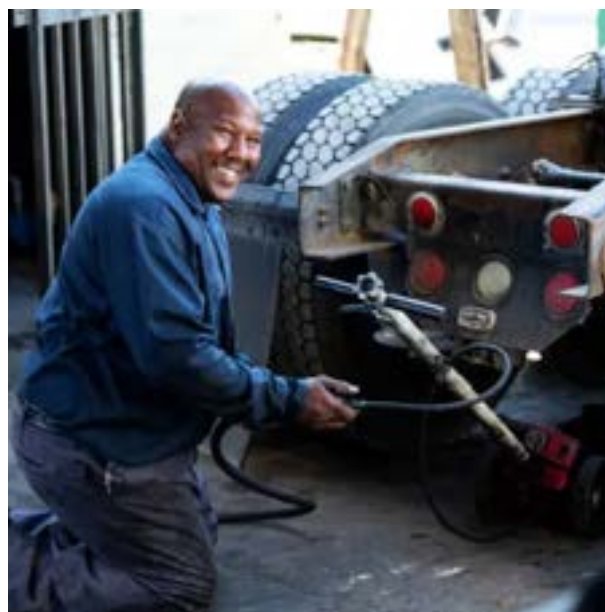


## DART HAS OPENINGS

Delaware Transit Corporation (DART) has 11 New Castle County openings in various departments including a variety of skill sets and status. Below is listing of some openings, along with starting salaries:

- Paratransit Specialist - \$23.97
- Auto Technician - \$33.68
- Mechanic - \$37.42
- Mechanic Helper - \$30.91

For job descriptions and next steps to apply, visit <https://www.dartfirststate.com/About/employment/index.shtml>.



## DSP HAS OPENINGS

Delaware State Police (DSP) are hiring for Troopers and Civilian Job of Telecommunications Specialist. The next application closing date for a State Trooper is August 31, 2026, with a starting salary of \$91,265.00.00.

Salary of \$54,830.00 plus \$3,000.00 shift differential and \$4,000.00 sign on bonus, paid in installments for Telecommunication Specialists with an application closing date of June 30, 2026.

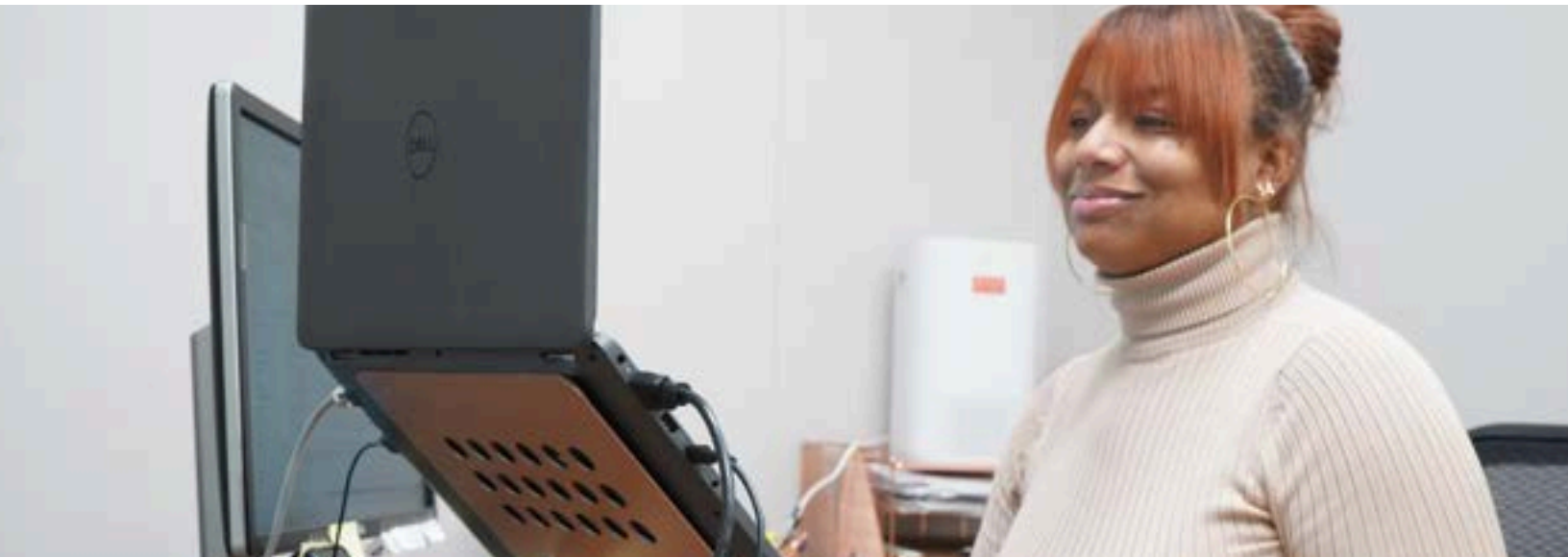
For a full list of openings, job descriptions and next steps to apply, visit <https://dsp.delaware.gov/employment-opportunities/>.

## CITY OF WILMINGTON CAREER OPPORTUNITIES

City of Wilmington has eight career opportunities including both part and full-time status. Openings include, but are not limited to:

- Assistant City Solicitor
- Freelancer
- GIS Tech I
- Plans Examiner
- School Crossing Guard
- Signal Electrician - CDL B

For job descriptions, salary ranges and to apply, visit <https://www.wilmingtonde.gov/government/city-departments/human-resources/apply-for-city-employment>.



## CHILD WELFARE CASE WORKER

Children and Families First is hiring a full-time Child Welfare Case Worker within their Family Assessment Intervention and Response Program. For job description and to apply, visit

<https://recruiting.paylocity.com/Recruiting/Jobs/Details/3870136/>.



## ADMINISTRATIVE ASSISTANT SUPERVISOR

Division of Substance Abuse and Mental Health (DSAMH), located at 14 Central Ave, New Castle, DE has an Administrative Assistant Supervisor contractor (hired by Aroha Technologies) role available for up to a year. The salary range is \$20.00 to \$25.00 per hour at a work week of 37.5 to 40 hours per week Monday through Friday.

For job descriptions and to apply, visit [https://www.ziprecruiter.com/co/Aroha-Technologies/Jobs/-in-New-Castle,DE?uuid=L6vkBVWrnSCWMwGDRF1zOIXkWKg%3D&radius=25&lk=FQOa1UqhlWpO\\_RVyJbAbNA](https://www.ziprecruiter.com/co/Aroha-Technologies/Jobs/-in-New-Castle,DE?uuid=L6vkBVWrnSCWMwGDRF1zOIXkWKg%3D&radius=25&lk=FQOa1UqhlWpO_RVyJbAbNA).

## HOUSE MONITOR OPENING

Warriors Helping Warriors of Middletown, DE has an opening for a part-time House Monitor at a rate of \$15.00 to \$20.00 per hour. House monitors interact with the residents providing direction, leadership, mentoring, conflict resolution and more.

For job description and to apply, visit <https://www.ziprecruiter.com/c/Warriors-Helping-Warriors/Job/House-Monitor/-in-Middletown,DE?jid=778ac349cc3b8777>.

## WELLS FARGO CAREERS

Wells Fargo bank has 10 career opportunities in the Wilmington, DE area. Career options span across various business areas and interests. Opportunities include but are not limited to:

- Teller Part Time Prices Corner
- Senior Manager Risk Analytics
- Senior Lead Decision Science Risk Analytics Consultant, Credit Card
- Lead Architect Consumer Lending Operations
- Senior Lead Product Manager - Business Card Branch Acquisition and Banker Engagement Strategy
- Senior Lead Product Manager

For a full list of career opportunities, job descriptions and to apply, visit <https://www.wellsfargojobs.com/en/jobs/?search=Wilmington%2C+DE&country=United+State+of+America&ion=Delaware&location=WILMINGTON&pagesize=20#results>.

## HIGHMARK HEALTH OPTIONS MEMBERS: YOU DESERVE A REWARD.



Healthy Rewards is one of your Highmark Health Options benefits. You or your child can earn rewards when you complete certain healthy activities. We'll tell you what healthy activities you qualify for based on your age, gender, and health conditions. You can earn \$10 to \$25 for each healthy activity, such as an annual wellness visit or a cervical cancer screening. Healthy activities for babies include a lead screening and baby wellness visits.

Take care of your health.

Sign up and see the rewards you can earn.

Scan, go online, or call today.

[My.TheraPayRewards.com/HHO](https://My.TheraPayRewards.com/HHO)

1-866-469-7973 (TTY:711)





## THE WILMINGTON HOUSING AUTHORITY IS ONLINE

The Wilmington Housing Authority posts regular announcements and events on our website as well as our Facebook, Instagram and LinkedIn pages. Scan the QR codes to visit our website (<https://whadelaware.org/>) and our social media pages.



WHA WEBSITE



WHA FACEBOOK  
PAGE



WHA INSTAGRAM  
PAGE



WHA LINKEDIN  
PAGE



WHA YOUTUBE  
CHANNEL



WHA TIKTOK  
CHANNEL

For general questions, inquiries, and other information for Wilmington Housing Authority's Executive Director, Ray Fitzgerald, please contact Azsana Wing, Confidential Executive Assistant, at [AWing@whadelaware.org](mailto:AWing@whadelaware.org).