

FEBRUARY 2025

ANNOUNCEMENTS

THE WILMINGTON HOUSING AUTHORITY'S MONTHLY UPDATES



WHA MADISON GARDENS TOWNHOMES NO LONGER ACCEPTING APPLICATIONS

Madison Garden Townhomes is a low-income tax credit property owned and operated by Wilmington Housing Authority. Effective September 1, 2024, WHA will no longer be accepting preliminary applications. To check the status or make changes to existing applications or for questions regarding the application process, please contact the Management Office at 302-429-6700.

THE WILMINGTON HOUSING AUTHORITY OFFERS AUTOMATED MESSAGING TO RESIDENTS

The Wilmington Housing Authority now provides automated text messages and phone calls to residents. These automated messages allow residents to receive updates, notices, and other resources in real time.

INGLESIDE HOMES HAS IMMEDIATE OPENINGS

Ingleside Homes Retirement Apartments has immediate openings for studio and 1-bedroom apartments. Residents must be 62 years old or older. Monthly rent is 30% of monthly income and pays for all services at Ingleside, which includes:

- Three (3) meals daily
- Weekly housekeeping and maintenance
- 24-hour Security
- Life Alert Pendant
- All Utilities
- Social & Recreational Programs
- Social Services

For more information, contact Renata Maslowski at (302) 575-0250 ext. 2245.

DELAWARE HCV WAITLIST IS OPEN

The five public housing authorities of Delaware have consolidated their waitlists for Housing Choice Vouchers (HCV) programs and low-income public housing as of February 3, 2025, into the Delaware Affordable Housing Hub. The waitlist for HCVs is now open for new applications.

Public housing authorities provide rental assistance to low-income families, seniors, and individuals with disabilities, ensuring access to safe and suitable housing. The five Delaware public housing authorities participating are Wilmington Housing Authority (WHA), Delaware State Housing Authority (DSHA), Dover Housing Authority (DHA), New Castle County Housing Authority (NCCHA) and Newark Housing Authority (NHA).

Previous applicants were required to log in and revise their household income, family size, and contact information by December 31, 2024. Any applicant that did not update their application that wishes to reinstate their placement via appeal may visit <https://Delaware.AffordableHousing.com> or call toll-free at 1-855-301-5920 for more information. Visit <https://Delaware.AffordableHousing.com> to apply and for more information.



WHA JOINS EASTSIDE THRIVE PRESS CONFERENCE



Pictured Above: Kevin Smith, CEO, Habitat for Humanity of New Castle County

The Wilmington Housing Authority (WHA) attended the press conference for the Eastside Thrive Neighborhood Revitalization Plan, a transformative 10-year initiative focused on creating a healthier, more vibrant Eastside community. Developed through a collaborative effort by Habitat for Humanity of New Castle County, The Central Baptist Community Development Corporation, and Healthy Communities Delaware, with significant input from Eastside residents, the plan emphasizes seven vital conditions for health and well-being. WHA is excited about the opportunity to support this initiative through potential partnerships on housing projects and employment and training programs, reinforcing our shared commitment to building a stronger, more connected Wilmington.

CELEBRATING GROWTH: JAIYAR MCGHEE JOINS PRHPT AS HOUSING LOCATOR

We are proud to announce that JaiYar McGhee has joined the Premier Rapid Housing Placement Team (PRHPT) as a Housing Locator, effective January 2025. JaiYar's transition to this critical role reflects his outstanding dedication and impactful contributions during his time with YouthBuild, where he served as both a Recruiter and Lead Abatement Supervisor. Wes Southall, YouthBuild Director, shared his heartfelt gratitude, stating, "We extend our sincere appreciation for JaiYar's remarkable efforts over the past year and look forward to witnessing his continued success as he brings his passion and expertise to PRHPT. Congratulations, JaiYar, and best of luck in your new role!"



CONGRATULATIONS TO KEISHLA FIGUEROA



Keishla Figueroa, a YouthBuild graduate, has reached an incredible milestone—over six months of full-time employment at a local financial institution. Her hard work, determination, and commitment to success continue to inspire those around her. When asked about her journey, Keishla shared her words of wisdom for anyone seeking a career: “Do it for your future self.” Her story is a testament to the power of perseverance and the bright future that comes with setting and achieving your goals. We’re so proud of Keishla’s accomplishments and cannot wait to see all the amazing things she will continue to achieve.

Email WHADEYouthBuild@whadelaware.org, to become a partner of YouthBuild.

YOUTHBUILD SUCCESS: JIAZAH HIGHTOWER & DAYANNA OWENS EARNED THEIR HIGH SCHOOL DIPLOMA



Pictured Above: Jaiazah Hightower

Wilmington Housing Authority (WHA) proudly celebrates the exceptional achievement of YouthBuild participants, Jaiazah Hightower and Dayanna Owens, who earned their High School Diploma in December 2024 and January 2025 respectively. This significant milestone highlights their unwavering commitment to personal and academic growth, underscoring the power of determination and perseverance.

Jaiazah and Dayanna exemplified resilience and dedication, balancing rigorous coursework while being employed and obtaining their Lead Abatement Certifications. Their success not only opens doors to further educational and career opportunities but also serves as inspiration to their peers and the broader community. They have each taken the next steps in career paths by enrolling in Penn Foster’s Certified Medical Assistant (CMA) program.



Pictured Above: Dayanna Owens

By earning their diploma, Jaiazah and Dayanna have taken a pivotal step toward a brighter future, embodying the spirit of self-sufficiency and progress that WHA strives to foster. We extend our congratulations and look forward to celebrating more milestones with them as they continue to build on their success.

For more information on how you or your organization can become a YouthBuild Partner, contact WHADEYouthBuild@whadelaware.org.

CELEBRATING SUCCESS: AMANDA MORALES' JOURNEY TOWARD HOMEOWNERSHIP

Congratulations to WHA resident Amanda Morales for achieving a major milestone on her path to becoming a first-time homebuyer! Through dedication and hard work, Amanda has successfully increased her credit score by implementing and maintaining a monthly budget and paying off credit balances. Resident Services Coordinator Nakia Wallace shared, "Amanda has reached a great milestone on her journey towards becoming a first-time homebuyer." Amanda's progress is a shining example of what's possible through commitment and financial planning. The WHA Resident Services team is proud to support Amanda and celebrates her accomplishments as a Family Self-Sufficiency program participant. Keep up the great work, Amanda—you're well on your way to achieving your dreams!



WHA YOUTHBUILD HOSTS ON-SITE EMPLOYMENT INTERVIEWS FOR CONSTRUCTION CAREERS

Wilmington Housing Authority's YouthBuild building was buzzing with opportunity as 20 YouthBuild and Lead Abatement participants and graduates taking part in on-site employment interviews on Wednesday, January 15, 2025, and Friday, January 17, 2025. Partnering with four local organizations in the construction industry, WHA provided a direct pathway for participants to transition from training to employment. The event underscored WHA's commitment to workforce development, empowering individuals with the skills and connections needed to build a successful career in the trades.

Desired Castro, WHA YouthBuild Lead Abatement Job Developer, reflected on the impact of the interviews, sharing, "I felt very good about the results of the interviews because I saw the positive and happy expressions on the participants' faces. Guiding and supporting them makes me happy, especially seeing that they are motivated to progress." Participants left feeling encouraged, excited, and ready to step into new opportunities, with many expressing gratitude for the chance to showcase their skills. WHA continues to champion career development, ensuring participants not only receive training but also have access to real job prospects that lead to self-sufficiency.

For more information on how you or your organization can become a YouthBuild Partner, contact WHADEYouthBuild@whadelaware.org.



Pictured Above: Interviews taking place at YouthBuild Headquarters on January 15 and 16, 2025.

DESIRED CASTRO NAMED EASTSIDE 2035 AMBASSADOR BY HABITAT FOR HUMANITY

The Wilmington Housing Authority (WHA) is proud to celebrate Desired Castro, YouthBuild Lead Abatement Job Developer, for her recent recognition as an Eastside 2035 Ambassador by Habitat for Humanity. Desired earned this prestigious designation through her consistent dedication to serving the Wilmington community. From organizing city cleanups to engaging in local school activities, serving holiday treats during Christmas events, and participating in special events honoring the legacy of Jimmy Carter, Desired has demonstrated a passion for collaboration and community-building. Her tireless efforts and enthusiasm for giving back have made her a beacon of hope and an inspiration to others.

As a Habitat for Humanity Ambassador, Desired will continue her commitment to fostering strong community ties by participating in upcoming events and initiatives. Her goals include supporting cleanup efforts, assisting with events that bring neighbors together, and representing Habitat for Humanity's mission of service and collaboration. "It's meaningful to me to contribute to the community and help others. Giving back to the community is important, and I am proud to be part of this effort," Desired shared. WHA congratulates Desired on this well-deserved recognition and looks forward to supporting her in her continued efforts to uplift and unite the community.



Pictured Above: Desired Castro

THE PREMIER RAPID HOUSING PLACEMENT TEAM SUCCESSFULLY FINDS HOMES FOR FAMILIES



Pictured Above: Jennifer Harris

In January 2025, our Premier Rapid Housing Placement Team successfully housed 15 families in safe, clean, and decent homes, despite the scarcity of affordable rental housing. Congratulations to team members Jennifer Harris with the highest placements for the month. January placements were Wilmington Housing Authority (WHA) Housing Choice Vouchers, including assisting one family transitioning from WHA Riverside community, also one community partner referral of a family with no voucher.

The Premier Rapid Housing Placement Team is dedicated to assisting individuals and families in Wilmington with housing placement. They offer services such as case management, barrier assistance, and rental navigation.

By partnering with landlords, the team helps clients find suitable affordable housing options. These collaborations benefit landlords by aiding in tenant recruitment, ensuring property inspections meet safety standards, and facilitating secure monthly rental payments through a designated portal. To become a client or landlord partner, please contact 302-579-2925.

MCMULLEN SQUARE NEW CONSTRUCTION TOWNHOMES AVAILABLE FOR PURCHASE FOR DELAWARE HOMEBUYERS

The Delaware Affordable Housing Group (DAHG), a valued non-profit partner of the Wilmington Housing Authority, proudly introduces McMullen Square Townhomes, one of Wilmington's premier new construction communities. McMullen Square, located in Northeast neighborhood of Wilmington, DE, offers spacious, three-story townhomes with three bedrooms and 2.5 bathrooms. These newly constructed townhomes boast modern style and coveted amenities, including multi-level living, eat-in kitchens, rear decks, and an oversized garage. Close to schools, and minutes from Wilmington's Train Station, I-95 and I-495, McMullen Square, provides unparalleled convenience. Phase One of McMullen Square will be delivered by the first quarter of 2025. Depending on the lot, the buyers will have the option of a one or two-car garage, allowing for interior customization to suit individual preferences. McMullen Square townhomes come in two primary layouts ranging from 1,767 to 1,982 square feet. For more details on McMullen Square, visit <https://delawareaffordablehousinggroup.com/mcmullen-square-townhomes>

For more information on available properties, contact Gary Williams at 302-368-1621 or Co-Listing Agent, Simone J. Braxton 302-887-0772, BHHS Fox & Roach-Christiana.



Pictured Above: McMullen Square Frontage.

ONE-STOP SHOP ENVISION CENTER HOMEBUYER'S WORKSHOPS

The WHA One Stop Shop's (OSS) EnVision Center is hosting a Homebuyer's Workshop on March 13, and April 10, 2025, at 2:00 PM. The Homebuyer's Workshop is offered virtually every second Thursday of the month through Microsoft Teams.

For more information or to register, call the WHA OSS at 302-269-9126.



LUTHER TOWERS HAS OPENINGS

Luther Towers of Wilmington has immediate openings for individuals 62 years old or older in their subsidized housing community of studio and 1-bedroom apartments. Experience the perfect blend of comfort and community. These newly renovated spacious apartments feature modern amenities and enjoyable on-site services such as a fitness center, library, computer lab, laundry facility, and inviting community spaces. With easy access to local shops, dining, and public transportation, everything needed is just moments away.



For more information, email luthertowers@pkmanagement.com or call 302-652-3737. Visit <http://www.luthertowers.com/independent-living-apartments/> for more details and to apply.



ONE-STOP SHOP ENVISION CENTER WORKSHOPS

The WHA One Stop Shop's (OSS) Envision Center's overall mission is to serve as the catalyst for change for the achievement of "self-sufficiency" for all WHA residents as well as individuals living in the City of Wilmington. Below are the dates for the upcoming workshops.

| DATE | TIME | LOCATION | TOPIC | PRESENTER |
|-----------|---------|---|---|-------------------|
| 2/21/2025 | 2:00 PM | PARK VIEW APARTMENTS 1800 N. Broom Street Wilmington, DE 19802 | Stress Management & Self -Care | Delaware Guidance |
| 2/28/2025 | 1:30 PM | COMPTON APARTMENTS 325 E. 5th Street Wilmington, DE 19802 | The Impact of Trauma on Child Development | Delaware Guidance |
| 2/28/2025 | 2:00 PM | COMPTON APARTMENTS 325 E. 5th Street Wilmington, DE 19802 | The Impact of Trauma on Child Development | Delaware Guidance |
| 3/7/2025 | 1:30 PM | BAYNARD APARTMENTS 309 W .18th Street Wilmington, DE 19802 | Parenting Skills - Young Children | Delaware Guidance |
| 3/7/2025 | 2:00 PM | BAYNARD APARTMENTS 309 W .18th Street Wilmington, DE 19802 | Parenting Skills - Young Children | Delaware Guidance |
| 3/14/2025 | 1:30 PM | CRESTVIEW APARTMENTS 700 N. Market Street Wilmington, DE 19802 | Parenting Skills - Young Children | Delaware Guidance |

RESIDENT SERVICES MONTHLY WORKSHOPS

One-Stop Shop EnVision Center January 2025 Workshops provided WHA Residents with a variety of resources to assist their path of self-sufficiency. Workshops included Behavior health options, VIP Care for healthcare opportunity, LIHEAP application assistance and fitness. Additionally, residents had an opportunity to win prizes, enjoy snacks, and socialize with neighbors in their buildings.

For more information on WHA One-Stop Shop EnVision Center workshops or to discuss partnerships for future workshops, call 302-269-9126 or email residentservices@whadelaware.org.



Pictured Above: WHA Residents.



MEDICAID RETROACTIVE COVERAGE

Delaware Medicaid has groups of individuals that might be eligible for retroactive Medicaid Coverage starting January 1, 2025. Those eligible for Retroactive Coverage, they might be able to get their medical bills covered by Medicaid up to three months before Medicaid start date.

Medicaid provides medical assistance to eligible low-income families and to eligible aged, blind and/or disabled people whose income is insufficient to meet the cost of necessary medical services.

Visit <https://dhss.delaware.gov/dmma/medicaid.html>, for more information and a full list of Retroactive Coverage groups, or call 1-866-843-7112 (TTY 711).

FREE MENTAL HEALTH EMERGENCY SERVICES AVAILABLE FOR CHILDREN & YOUTH

The Delaware Guidance Services for Children & Youth, Inc. in partnership with the Department of Services for Children, Youth, & Their Families offers mental health emergency services to children between the ages of 3 and 17 years old in the state of Delaware. Their skilled Crisis Intervention Clinicians come to wherever you are, whenever you need it, to provide crisis support. Services are available 24 hours a day/365 day a year.

Call 1-800-969-HELP (4357) for immediate assistance. Visit <https://www.delawareguidance.org/> for more information.



MATERNAL MENTAL HEALTH

Jewish Family Services of Delaware offers moms and moms-to-be a Maternal Mental Health group. Meetings are Wednesdays at Noon via Zoom through April 12, 2025. Participants can attend as often or infrequently as they choose. For more information and to get started, visit <https://www.jfsdelaware.org/maternal-mental-health/>.



SUICIDE & CRISIS LIFELINE

If you are experiencing a medical emergency, have taken an overdose, or have harmed yourself in any way, **DIAL 9-1-1 IMMEDIATELY.**

Call or text **988** for counseling. Counseling can also be done via chat at <https://chat.988lifeline.org/>. Individuals deaf, hard of hearing and hearing loss also have the option of connecting through <https://988.asnnow.io/?destination=100030001>.

Assistance is open to all, including specific support for:

- Veterans and their families
- Spanish speakers
- LGBTQI+ youth and young adults



MENTAL HEALTH & SUBSTANCE USE THERAPEUTIC TREATMENT

Holistic Elevation LLC, of 3700 Lancaster Pike, Suite 303, Wilmington, DE provides intensive therapeutic treatment (IOP) for individuals facing mental health and substance use challenges with a variety of complex, chronic, and acute trauma. Holistic Elevation LLC addresses the mental, financial, physical, medical, emotional, and spiritual aspects of healing, for clients to achieve long-term recovery and overall well-being.

For more information or to refer a client, visit <https://www.holisticelevation.org/> or email at intake@holisticelevation.org.

DELAWARE GUIDANCE SERVICES FOR CHILDREN & YOUTH, INC.

Delaware Guidance Services for Children & Youth, Inc. is Delaware’s largest provider of non-residential mental health services for children and families. Their trained clinicians are ready to help children and youth who may be experiencing anxiety, depression, stress, trauma and PTSD, and other behavioral or mental health concerns. Medicaid and all major insurance providers are accepted. For more information visit <https://www.delawareguidance.org/> or call one of the agency locations.

WILMINGTON
(302) 652-3948

NEWARK
(302) 455-9333

DOVER
(302) 678-3020

LEWES
(302) 645-5338

SEAFORD
(302) 262-3505



EMPOWERED MAN WELLNESS GROUP

Every Man Counts hosts Empowered Man Wellness Group at 2417 Lancaster Ave., Wilmington, DE every second Tuesday at 6:00 PM. Topics covered include managing emotions and thinking, mental health, addictions, parenting, PTSD and more.

For full details and enroll, call 302-722-5939 or visit <https://everymancounts.org/#programs>.

LOCATE BLACK HEALTHCARE PROFESSIONALS

Findablackdoctor.com has a directory of black healthcare professionals across the United States for individuals to locate in their area. Additionally, their website hosts articles through blog posts of healthcare concerns.

For more information and to locate a local healthcare professionals, visit <https://www.findablackdoctor.com/>.





RECOVERY HOUSING PROGRAM

NAMI Delaware has permanent affordable housing for persons who have a chronic mental illness. NAMI believes that stable, safe and affordable housing can help individuals on their journey to recovery and prevent hospitalizations, homelessness and involvement in the criminal justice system. Their housing options include:

- 62 independent living properties
- 6 group home properties
- 8 transitional home properties

Visit <https://www.namidelaware.org/housing/> for more information and to apply.

RUNAWAY AND HOMELESS YOUTH PROGRAM

The Runaway and Homeless Youth (RHY) Project of CHILD, Inc. operates a 24-Hour Runaway Hotline that serves as a vital link between runaways, their families, and CHILD, Inc. counseling services. The Project provides free individual and family counseling, a temporary emergency home, and related services to runaway and homeless youth and families experiencing stress. For assistance, call the 24-Hour Runaway Hotline of 302-762-6373.



SISTERHOOD HOUSING PROGRAM

Sisterhood Housing Transitional Program of Black Mothers in Power provides temporary (six to 12 months), supportive housing for women with children to assist in achieving stability and independence. Families will share living spaces and receive access to a variety of supportive services, including, but not limited to case management and counseling, Job training and employment support, Life skills workshops (e.g., budgeting, parenting), Mental health and substance abuse support and Healthcare access, including Doula Services.

Visit <https://www.blackmothersinpower.org/transitional-housing> for more eligibility and to apply or email sisterhoodhousing@blackmothersinpower.org to apply.

GROUP HOME & TRANSITIONAL HOUSING

New Beginnings 1 of Wilmington, DE offers housing to men and women that are rehabilitated, homeless and transitioning adults to assist them in obtaining life goals. This opportunity for independence with support throughout patient programs, in-house speakers, no additional cost for utilities, toiletries and more are provided to each occupant for a flat monthly rate.

For more information and full program eligibility, visit <https://www.new-beginnings-1.com/> or email Newbeginnings1208n@gmail.com. Also, calls are accepted by Eleanor Cooper at 267-205-6763 or Angelita Cruz at 302-897-8995.





KINSHIP CARE PROGRAM

The Kinship Care Program provides assistance for relative caregivers (i.e. grandparents, aunts and uncles) during the 180-day transition period when a child first moves into the caregiver's home. The program assists in meeting immediate needs for clothing, shelter, health, safety, and educational supplies.

For program eligibility and more details, visit <https://dhss.delaware.gov/dhss/dss/kinshipcr.html>.



DELAWARE EMERGENCY NOTIFICATION SYSTEM

The Delaware Emergency Notification System (DENS) provides free emergency alerts and notifications via call, text, email and social media. The system allows local 911 centers or emergency managers to send messages to the specific street, neighborhood, or larger areas affected by the event. In the event a line is busy, the DENS system will retry two additional times to deliver the message. If an answering machine or voicemail is reached, the system will deliver the emergency message there. Cell phones are not automatically enrolled in the DENS database.

For more information on DENS and to register, visit <https://dema.delaware.gov/onlineServices/index.shtml?dc=dens>

GAMBLING PROBLEMS

Delaware Council on Gambling Problems, Inc. offers a confidential helpline of 1-888-850-8888 24 hours a day, 7 days a week. Also, there is an option to text 302-438-8888 Monday through Friday from 9:00 AM to 5:00PM.

Visit deproblemgambling.com, for more information.

MEDICARE PRESCRIPTION PAYMENT PLAN

As of January 2025, Medicare Part D beneficiaries will be able to spread prescription drug costs across the year. These payment plans will include zero-interest installments as well as a \$2,000.00 annual out-of-pocket cap.

There is no cost to participate in the Medicare Prescription Payment Plan and it is voluntary. It may help to manage monthly expenses, but it does not save the participant money or lower drug costs.

Visit <https://www.medicare.gov/prescription-payment-plan>, for more information on this program.



PAIN TO PURPOSE OPEN FORUM

Pushing Through, Inc. is hosting Pain to Purpose through Sharing our Stories on Saturday, March 22, 2025, from 12:00 PM to 4:00 PM. The event is being held at Kirkwood Library, 6000 Kirkwood Hwy., Wilmington, DE.

Pushing Through's mission is dedicated to advancing mental well-being for both men and women at all ages. This event is open to all offering lite refreshments and resources at no cost.

For more information and to register, visit <https://www.pushingthrough.org/>.



ACTIVITY CLUB FOR SPRING 2025

University of Delaware's Cooperative Extension is offering Walk & Roll Club statewide at no cost to participants. Club sessions are an hour and consist of a warm-up, light stretching, a cardiovascular session and a cool-down. All sites are wheelchair and stroller accessible. Bilingual Spanish leaders are available at some sites.

The Newark location for this club is Glasgow Park Loop Trail, 2275 Pulaski Hwy., Newark, DE at the Frazer Farmhouse Porch. Sessions will be hosted on Mondays, March 3 to April 7, 2025, and April 14 to May 19, 2025, from 10:00 AM to 11:00 AM. This site has a bilingual Spanish Walk & Roll Leader.

For more information, locations and to register, visit <https://www.udel.edu/academics/colleges/canr/cooperative-extension/nutrition-wellness/physical-activity/>. For further assistance, contact Nancy Mears at mears@udel.edu or call 302-831-3284.

HIGHMARK REWARDS PROGRAM



You deserve a reward.

Healthy Rewards is one of your Highmark Health Options benefits. You or your child can earn rewards when you complete certain healthy activities.



To sign up and see the rewards you can earn, go online or call: my.therapyrewards.com/hho 1-866-469-7973



| Reward activities can include: | | |
|--|---|---|
| \$15 Annual well-child visit (ages 3-19) | \$10 per visit/up to 8 visits Well-baby visit series (through age 30 months) | \$10 Lead screening (up to age 24 months) |
| \$15 A1c test for people with diabetes | \$15 Doctor visit after giving birth (up to 84 days after delivery) | \$25 Colorectal cancer screening |
| \$25 Cervical cancer screening | \$15 per fill/up to 6 fills Asthma controller medicine (age 18 and younger) | \$15 Retina exam for people with diabetes |
| \$15 Annual wellness visit (age 20 and older) | \$25 Breast cancer screening | \$15 Doctor visit after leaving the hospital |

Powered by **heraPay**

Highmark Health Options (HHO) is an independent licensee of the Blue Cross Blue Shield of Delaware (an association of Independent Blue Cross Blue Shield Plans). HHO complies with applicable federal, state and local laws and does not discriminate on the basis of race, color, national origin, age, disability, or sex.



HARM REDUCTION CONFERENCE 2025

Impact Life is hosting the 3rd Annual Harm Reduction Conference 2025 on Tuesday, August 12, 2025, from 8:30 AM to 4:00 PM at the Doubletree Hotel of Wilmington, DE. National Speakers will be presenting along with free parking, lunch and CEUs. Registration is opening this spring. Limited Vendor slots are also being offered. For more information and to register, visit <https://derecoveryevents.com/2025-harm-reduction-conference/>.

LOW- TO MODERATE-INCOME SOLAR PILOT PROGRAM

DNREC is offering grants to promote the use of renewable energy in Delaware for low- and moderate-income households.

There are two pathways to qualify for receiving a cost-free or reduced-cost solar installation on your home. For low-income households, applications and approvals are obtained through the Weatherization Assistance Program, which serves low-income households with cost-free weatherization. For moderate-income households, applications and approvals are obtained through the Green Energy Program, with applicants specifically requesting the reduced-cost solar installation as a moderate-income household.



Visit <https://dnrec.delaware.gov/climate-coastal-energy/renewable/lmi-solar-pilot-program/>, for more information.

ROOFS FROM THE HEART

Roofs from the Heart help families that are in need of roof repair or replacement. The organization is looking for homes to be nominated for a roof repair or replacement. Roofs from the Heart chooses one to two recipients every quarter to receive a full roof replacement. The program runs statewide in Delaware.

Visit <https://roofsfromtheheart.org/>, for more information and to nominate a home.



CHRISTIAN GROWTH MINISTRIES PANTRY

Christian Growth Ministries Pantry is located at 850 North Church Street, Wilmington, DE. The pantry is available on the last Saturday of each month from 10:00 AM to 2:00 PM. For more information, call 302-494-5487.



EZION – MT. CARMEL UMC FOOD PANTRY

Ezion-Mt. Carmel UMC Pantry is located at 800 N Walnut St., Wilmington, DE, is open Monday thru Thursday through 11:00 AM to 1:00 PM and 2:00 PM to 3:00 PM (ring bell) and 4th Friday of each month 12:00 PM to 1:00 PM (in front of the church). Contact Phone is 302-654-3103.

MEALS FOR HOMEBOUND ELDERLY & DISABLED

City Fare Meals on Wheels, provide hot, nourishing meals to homebound elderly and disabled persons in New Castle County who are unable to prepare meals for themselves and who have no one to do so for them. They also provide case management to every client. City Fare also has dining room locations for those that are not homebound.

For more information and to register, visit <https://www.cityfare.org/meals/eligibility.php> or call 302-421-3734.

DORCAS' PANTRY

Faith Chapel Community Outreach of 1909 North Market Street, Wilmington, DE where they provide non-perishable food assistance every Other Saturday from 10:00 AM to 12:00 PM. For more information, visit <https://www.rccgfaithchapel.org/dorcas-pantry/> or call 610-931-9795.

CPC FOOD HUB

The Community Presbyterian Church (CPC) Food Hub is open:

- Fridays - 10:00 AM to 12:00 PM
- Saturdays - 9:00 AM to 11:00 AM
- Sundays - 11:00 AM to 12:00 PM

The hub is located at 519 Rogers Rd., New Castle, DE at the back of the church. Groceries are provided for up to one week. For more information, call 732- 610-3683.

PLENTY PANTRY

The Warehouse operates Plenty Pantry offering food assistance to households at their location of 1121 Thatcher St., Wilmington, DE. Hours of operation are Tuesday and Thursday, 10:00 AM to 12:00 PM and Wednesdays from 5:00 PM to 7:00 PM Call 302-655-7338, for more information.



FREE TAX PREP SERVICES

Nehemiah Gateway CDC will be offering tax prep services Monday January 27 to Saturday, April 19, 2025. Appointments being taken for households with an income of \$67,000.00 or less and individuals in Delaware. There are three options to filing tax site statewide, virtually and do it yourself.

For more information and to schedule an appointment, visit <https://nehemiahgateway.org/tax-prep/>.

RESIDENTIAL MATERNITY CARE

Bayard House of Catholic Charities of Wilmington provide housing to at-risk, homeless, pregnant and/or newly parenting adolescents, young women, and their babies. The Bayard House program helps young women become nurturing parents and self-sufficient.

For more information and to seek assistance, visit <https://www.cwilm.org/bayard-house/>.



TRANSITIONAL REENTRY SERVICES

Delaware Center for Justice (DCJ) offers Transitional Reentry Services Programming to adults exiting the Department of Corrections Level 4 and 5 facilities in Delaware. This program offers mobile Peer Support services statewide, starting with picking individuals up upon their release and offering transportation services and support for the first 90-days post-release. Program participants are connected with services and supports that help meet basic needs, personal goals, and probation requirements, including housing, supportive benefits, mental health and substance use supports, employment and education.

For more information and to seek assistance, contact Program Director, Lauren Werner at lwerner@dcjustice.org or 302-507-2618.



EXCHANGE PROGRAMS

The United Department of State sponsors several programs across the world that can give Americans educational, cultural, and professional experiences. This program offers opportunities starting with high school students through adults no longer in school. For more information, visit <https://exchanges.state.gov/us>.

GIRLS INC. PROGRAMS

Girls Inc. of Delaware offer a variety of programs to encourage a focus on academic achievement, leading healthy and physically active lives, money management, media messages and Science, Technology, Engineering and Math.

For more information on programs and to register, visit <https://girlsincde.org/gide-membership/>.



AFTER SCHOOL PROGRAM

One Step At A Time Foundation offers a variety of youth programming opportunities. One program offering is a free afterschool program Monday through Thursday from 3:00 PM to 6:30 PM. Curriculum includes tutoring, mentoring and activities.

For more information and to register, visit <https://onestepatimefoundation.com/youth-services> or call 302-297-8006.

BOYSIE LOWERY LIVING JAZZ RESIDENCY

City Fest of Wilmington, DE application for the Boysie Lowery Living Jazz Residency is being accepted through April 1, 2025. A two-week artist residency from June 8 to June 22, 2025, for jazz artists from 18 to 25 years of age who are both composers and performers. There is no cost to attend. The residency culminates in a final performance on the last day of the Clifford Brown Jazz Festival.

For more information and to apply, visit <https://cityfestwilm.com/programs-residencies> or call 302-297-8006.

TENNIS ROCKS TUTORING & MUSIC ASSOCIATION

Tennis Rocks, a program of Nehemiah Gateway CDC, located at 201 W. 23rd St., Wilmington, DE offers year-round tennis Camps, after school academic tutoring, music and more.

Summer Camp is a 7-week program Monday through Thursday, June to August from 8:30 AM to 3:30 PM for children eight years of age. It includes tennis as well as other themed topics such as golf, decision-making, and more. An optional academic enrichment and dinner program runs through 8:00 PM.

The mission of Tennis Rocks is to provide an opportunity for underserved youth and families in Wilmington to fulfill their maximum potential academically, socially, and physically. We use tutoring and music to address educational needs, and tennis to develop physical fitness, healthy lifestyles, and essential life skills.

Visit <https://nehemiahgateway.org/programs/youth-programs/tennis-rocks/>, for full details of offerings and register.

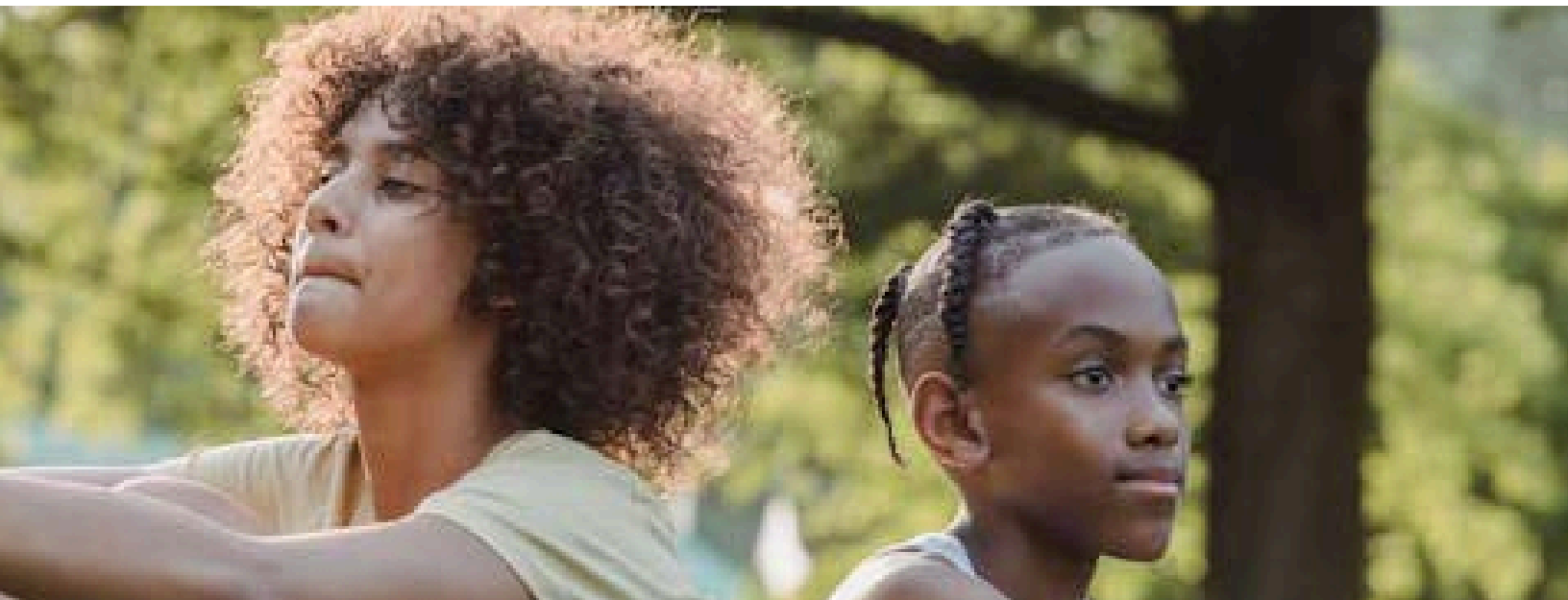


ROWING SUMMER CAMP

Wilmington Youth Rowing Association (WYRA) is now accepting applications for their Summer Camp programming in Wilmington, DE. There are several Camp programs over multiple weeks during the Summer of 2025 starting with youth at the age of 10. Financial Assistance may be possible, contact Executive Director Jesse Wakeman at jesse@wyr.org. For more programming information and to register, visit <https://www.wyra.org/program/summer-river-rangers/18557>.

LACC SUMMER CAMP ENROLLMENT

Latin American Community Center's (LACC) Summer camp enrollment is now open. Camp dates are June 16 to August 19, 2025 at \$175.00 per week with Purchase of Care being accepted and scholarships offered. For more information and to enroll, visit <https://www.thelatincenter.org/elementary-programs>.



DELAWARE NATURE SOCIETY SUMMER CAMP

Delaware Nature Society offers educational Summer Camps in 2025 at four locations from June 9 to August 29, 2025. Camp registration is open for both members and non-members. Members receive a discount, and scholarships may be available for those in need of assistance.

Topics include Hiking, Survival Skills, Stream & Pond Exploration, Live Animals, Visual & Culinary Arts, Camping, Canoeing & Kayaking, Fishing, Archery, Arts & Crafts, Gardening, and Farm Discovery.

For more information to prepare for camp and to register, visit

<https://www.delawarenaturesociety.org/activities/education/program-calendar/summer-camp/>.

NEW CASTLE COUNTY SUMMER CAMPS

New Castle County offers Summer Camp and registration for 2025 opens on February 21, 2025. Passport to Summer Camp is from June 16 to August 8, 2025. There are five categories of Summer Camp throughout New Castle County. Below are the categories and the contact phone number for questions.

- Recreation Camps/Safety Town - 302-395-5654
- Sports Camps - 302-395-5890
- Art Camps - 302-995-7661
- Cooking Camps - 302-395-8407
- Horseback Riding Camp - 302-995-7670

For more information, visit <https://www.newcastlede.gov/507/Camps>.

YMCA SUMMER CAMP

YMCA Delaware Summer Camp registration is open for Members and Non-members. There are six YMCA Day Camps in New Castle County with additional in Kent and Sussex Counties. Additionally, one overnight camp is available. YMCA Open Doors Financial Assistance program is available for Summer Camp, as well as Purchase of Care may be available.

For more information and to enroll, visit <https://www.ymcade.org/programs/summerdaycamp/>.

ADVENTURE KIDS CAMP

Adventure Camp is located at 4906 Concord Pike, Wilmington, DE for children six to 12 years old. Camp hours are 7:30 AM to 5:00 PM from June 16 to August 8, 2025.

Visit <https://adventurekidscamp.com/>, for more information and registration.





HAGLEY MUSEUM SUMMER CAMP

Summer Camp at Hagley offers day camps with a variety of experiences. Campers are ages seven to 12 with costs ranging from \$290.00 to \$400.00 per week. Camps operate Monday through Friday from 9:00 AM to 4:00 PM.

Youth ages 15 to 18 years of age can volunteer to be counselors at <https://www.hagley.org/support-hagley/volunteer>.

For more information and registration, visit <https://www.hagley.org/calendar/summer-camp-hagley>.

BOYZ2MEN MENTORING PROGRAM

BOYZ2MEN Mentoring Program of William “Hicks” Anderson Community Center located at 501 N. Madison St., Wilmington, DE. Meetings are hosted on Monday and Wednesday evenings from 6:00 PM to 8:00 PM for youth from nine to 18 years of age.

For more information, call 302-257-8662.



4-H SUMMER CAMPS

Delaware 4-H offers opportunities for youth to participate in coeducational day (statewide) and overnight camping experiences. Registration opens March 1, 2025, for New Castle County Day Camps running June 23 to 27, 2025, 8:30 AM to 4:30 PM. Each camp will take place at University of Delaware, Townsend Hall, Newark, DE at a cost of \$200.00.

Counselor-In-Training (CIT) Camp will also be hosted June 23 to 27, 2025, 8:30 AM to 4:30 PM at University of Delaware, Townsend Hall, Newark, DE at a cost of \$180.00. This camp is for 13- to 16-year-olds and limited to 15 campers.

Visit <https://www.udel.edu/canr/cooperative-extension/personal-economic-development/4-h-camps/>, for full details of camp offerings and Kent and Sussex Counties locations.

DELAWARE ART MUSEUM FAMILY PROGRAM

Children of all ages and their families can experience an activity that explores a new medium or technique each month from a professional teaching artist. Sign up for a time slot and create a work of art inspired by a piece in our collection. This programming takes place every second Sunday free for members and \$5.00 for non-members.

For more information and to register, visit <https://delart.org/event/family-2nd-sunday-2025-2/>.

YOUTH PROGRAMMING

Reeds Refuge Center of 1601 N. Pine St., Wilmington, DE offers youth programs through various art forms. Their mission is to protect and educate children and restore neighborhoods through a unique combination of arts, music, and life skills. Programming includes:

- Multimedia
- Fashion Design
- Audio Engineering
- Piano & Drum Instructions
- Cooking without a Stove
- Dance Instruction

Visit <https://reedsrefugecenter.org/#section-rr-services> for more information and enrollment.



NETWORK CONNECT PROGRAMS

Network Connect programs offer resources and expertise to education, support, and resources in a variety of venues for youth and young adults. Programs offered are:

- Future Culture Creators
- Community Well-Being Ambassador
- RACE to Wellness
- Wilmington Street Team
- Recovery Cafe (Dover)

For more information and how to enroll, visit <https://www.networkconnect.org/>.

ROTARY OF CLUB SCHOLARSHIPS

Rotary Club of Wilmington 2025 Scholarship Applications are being accepted. Applicants must be a City of Wilmington resident with financial need, strong academics, and extra-curricular and community Service activities. Applications are due February 28, 2025. There will be interviews hosted on March 15, 2025, and winners notified on March 24, 2025.

Applicants should request applications from Club Executive Ashley Cloud, 302-388-7176 or send your inquiry by email to: Scholarships@rotarywilmington.org.

GIRLS INC SCHOLARSHIPS

Girls Inc. of 1201 N. Orange St., Suite 100, Wilmington, DE offers four scholarship opportunities:

1. Clarice W Wolf Scholarship
2. Zenaida Otero-Gephardt Scholarship
3. Muriel E. Gilman Memorial Scholarship
4. Wilmington University Scholarship

For more information and to apply, visit <https://girlsincde.org/scholarshipopportunities/>.





BOARD MEMBERS BEING SOUGHT

Pushing Through, Inc. at 1148 Pulaski Hwy, Suite 217, Bear, DE are seeking volunteer Board Members for 2025 to 2026. Their mission is to promote mental health well-being for all ages and genders.

Visit <https://www.pushingthrough.org/join-our-team>, for more information and to apply.

SENIOR CENTER VOLUNTEER OPPORTUNITIES

St. Anthony Community Center’s Senior Center has volunteer opportunities at their 1703 W. 10th Street, Wilmington, DE location. Volunteering opportunities are available upon request such as working with their Sunshine Group - party planning committee, gift shop, meal registration and donations

Visit <https://stanthonycenter.org/senior-center/>, for more information and volunteer enrollment.

NCC YOUTH SUMMER EMPLOYMENT

New Castle County (NCC) is accepting applications for Youth Summer Employment opportunities for income-eligible youth ages 14 to 21. Working permits will be required for selected youth 17 years of age and younger. Selected applicants will be paid \$15.00 per hour.

Opportunities include, but not limited to:

- Coding
- Early Childhood
- Aquatics
- Agriculture
- Museums and Libraries
- Construction
- Health Careers

For more information and to apply, visit <https://www.newcastlede.gov/859/Youth-Workforce-Development-Program>.



TECH IMPACT HAS OPPORTUNITIES

Tech Impact has three Fellowships in Newark hybrid. Openings include:

1. Data Engineer
2. Data Scientist
3. Front End Developer

Visit <https://techimpact.org/careers>, for full job description, more information and to apply.



JOBS FOR DELAWARE GRADUATES

Brandywine School District Career Fair being hosted on Wednesday, March 19, 2025, from 8:30 AM to 11:00 AM for Concord, Mt. Pleasant and Brandywine High Schools. A light breakfast will be provided. Below career paths will be represented:

- Culinary & Hospitality Management
- Biomedical Science
- Digital Communication Technology
- Marketing Today
- Radio Broadcasting and Design
- Engineering

For more information, contact Brandywine Work-based Learning Coordinator, Sunday Dyitt at sdyitt@jdginc.org.

DRBA SUMMER INTERNSHIP AND CO-OP PROGRAMS

Delaware River & Bay Authority (DRBA) has both internship and Co-op programs. Internships at the DRBA last 10 weeks from May to August. Co-op students work during the school year for up to six months and are considered either extended internships or trainee-level positions. At the DRBA, both are paid and available to undergraduate and graduate students.

Visit <https://www.drba.net/internships>, for more information and to apply.

BMIP INTERNSHIPS

Black Mothers in Power (BMIP) of Wilmington, DE provides an array of support and services in addition to Doula training and certification to mothers and their families. The organization is seeking interns to assist with their mission.

Applications are accepted on a rolling basis. Submit your resume to clovehall@blackmothersinpower.org.

SENATE INTERNSHIP OPPORTUNITIES

The Senate offices in Washington, DC have seven internship opportunities advertised through the Senate Internship Opportunities Bulletin. Internship opportunities provided through the Bulletin do not include all potential Senate internships. Each Senate office manages their intern program, and information can also be found on their individual websites.

Two of the required qualifications include obtaining a bachelor's degree from an accredited university between December 2024 to May 2025 and available to relocate and begin program by June 10, 2025.

For details and how to apply, visit <https://www.senate.gov/employment/po/internships.htm>.



SUMMER FELLOWSHIP FOR EDUCATORS

The Department of Education is accepting applications for summer fellowships for future leaders and current educators who have a passion for education and want to gain hands-on exposure to policy work. There are two opportunities, one developed specifically for current college students and recent graduates and a second for current Nationwide public school teachers and specialists. These programs are offered through two tracks:

- Nationwide Future Education Leaders Program
- Educators as Catalysts Program

The application deadline for both fellowships is Monday, April 4, 2025. More information, including details on how to apply, is available at <https://backtobasicslearning.com/summer-fellowship-applications-now-open-for-delaware-educators/>.

IT SUPPORT SPECIALIST

Tech Impact, through their ITWorks program, provide free training to young adults for entry-level IT careers. ITWorks is a 16-week program provided at no cost, to teach industry-led skills to pass the CompTIA A+ certification.

Students will be eligible for paid internships and job placement support for their career. Classes are held Monday through Friday from 9:00 AM to 3:00 PM at no cost.

For more information and to register, visit <https://techimpact.org/itworks>.



CAREER TRAINING OPEN HOUSE

Food Bank of Delaware is offering career training programs in culinary arts and warehousing/logistics open houses. The open house will provide an opportunity to meet the Food Bank of Delaware training team and current students. Open houses are being hosted both in person at their Newark and Milford locations and virtually. For more information, visit <https://www.fbd.org/the-culinary-school/> for more information and to enroll in an open house.

LAUNCH YOUR SOFTWARE ENGINEERING CAREER



Your **Software Engineering** Career Journey Starts **Here**

Software Engineering Bootcamp

Our Next Cohort Begins March 3, 2025

APPLY NOW

bit.ly/cdinfo2025

20 Weeks • Full-Time Training (9am-5pm)
Mondays-Thursdays (In-Person -Wilmington, DE)
Fridays (Virtual)

- ✦ Delaware Residents **ONLY** (No Cost)
- ✦ Must be at least 18 years old
- ✦ Must have a minimum high school diploma or equivalent
- ✦ Must be authorized to work in the US without sponsorship now or in the future
- ✦ Must be unemployed or underemployed earning low to moderate income
- ✦ Must meet the program expectations and commitment
- ✦ Stipend and Laptop provided

**No experience?
No problem.
We'll get you started!**

Gain the skills to become a software engineer and ignite your career in tech.

Let's BEGIN!



Code Differently 1200 N. French Street, Wilmington, DE 19801
302.669.9182 • info@codedifferently.com

codedifferently.com    [codedifferently](https://codedifferently.com)

Code Differently is an equal opportunity employer/program. Auxiliary aids and services are available upon request for individuals with disabilities.

BRANCHES TO CHANCES EDUCATION TRAINING

Delaware Center for Horticulture Branches to Chances® (BtC) is a nine-week horticultural job training program for unemployed, underemployed, those in recovery, and/or previously incarcerated individuals. Training is aimed at connecting participants with entry-level positions in the horticulture industry, such as landscaping, tree maintenance, and park maintenance. Activities include hands-on training with daily tasks such as weeding and reinforcing a basis of knowledge in plant/weed identification, basic botany, equipment use, and safety.

Visit <https://thedch.org/education/#training> for more information or email sbett@thedch.org program eligibility.

DOULA TRAINING AND CERTIFICATION PROGRAM

Black Mothers in Power of Wilmington, DE offers Sankofa Doula Training and Certification Program. These programs are offered twice a year, in January and July, with two unique tracks:

- The General Doula Training & Certification Program
- The Doula Mentorship Program

Applications for these programs are offered year-round. The cost of this program fee is \$1,200.00 and scholarships are available, as well as payment plans being offered.

For more information and to apply, visit <https://www.blackmothersinpower.org/sankofa-doula-training-certification-program>.



PROJECT NEW START COHORT BEGINS IN APRIL

Project New Start, of Wilmington, is recruiting for the fall cohort of their New Start Reentry Program. The spring cohort is April 2025 - June 2025. New Start guides justice-involved individuals with their transition to a successful self-sustaining future. The program assists men and women in developing positive behaviors and marketable employment skills as well as assistance in obtaining and maintaining employment. Individuals attend 10 weeks of classroom instruction Monday through Friday, 8:30 AM to 3:00 PM which includes individualized job search assistance and case management for as long as needed. A sample of curriculum components includes Technology Training; Financial Literacy Education; certifications in Forklift Operator Safety, Flagger, OSHA, ServSafe, Parenting, Landscape Safety; and Resume & Interview Preparation. Approximately 90% of participants obtain employment.

For more information and to apply visit <https://www.project-new-start.org/apply-to-participate> or call 302-478-2806.

DELAWARE ALLIANCE FOR LATINO ENTREPRENEURS

Delaware Alliance for Latino Entrepreneurs (¡DALE!) is a network of local Latino-owned and operated businesses. ¡DALE! members receive an online listing in the business directory, free event access, the ability to post job and company news, and more. Visit <https://daledelaware.org/en/home/>, for more information and to enroll.

WHA PARTNERS WITH DSAAPD TO PROVIDE SUPPORT TO RESIDENTS

The Wilmington Housing Authority partners with the Division of Services for Aging and Adults with Physical Disabilities (DSAAPD) to expand the support and resources available to residents. DSAAPD staff members are onsite at several WHA locations to provide information and other resources to residents, including referrals, counseling options, and other resources.

DSAAPD's mission is to promote dignity, respect, and inclusion for older adults and people with disabilities. Residents can connect with DSAAPD staff members every month in the community room of the following locations:

| DAY | LOCATION | TIME |
|--|---|---------------------|
| TUESDAYS (March 18th & April 15th) | BAYNARD APARTMENTS (309 W. 18th Street, Wilmington, DE 19802) | 11:00 AM to 1:00 PM |
| TUESDAYS (March 18th & April 15th) | CRESTVIEW (2700 N. Market Street, Wilmington, DE 19802) | 2:00 PM to 4:00 PM |
| WEDNESDAYS (March 19th & April 16th) | COMPTON TOWERS (325 E. 5th Street, Wilmington, DE 19801) | 11:00 AM to 1:00 PM |
| WEDNESDAYS (March 19th & April 16th) | HERLIHY APARTMENTS (320 E. 5th Street, Wilmington, DE 19801) | 2:00 PM to 4:00 PM |
| THURSDAYS (March 20th & April 17th) | PARK VIEW (1800 N. Broom Street, Wilmington, DE 19802) | 11:00 AM to 1:00 PM |



JFS IS RECRUITING

Jewish Family Services (JFS) Delaware, a statewide organization, is recruiting for three positions in New Castle County. The Positions are New Castle County Mobile Therapist, Part-time Administrative Assistant and RIS Case Manager - Health Promotion.

For full job descriptions and to apply, visit <https://www.jfsdelaware.org/careers/>. Positions are also available in both Kent and Sussex Counties.

PUSHING THROUGH, INC IS HIRING

Pushing Through, Inc. are hiring for four positions at their 1148 Pulaski Hwy., Suite 217, Bear, DE location, to promote mental well-being across all ages. Opportunities include:

1. Resource Coordinator
2. Event and Volunteer Coordinator
3. Fundraising Coordinator
4. Grant Writer

Visit <https://www.pushingthrough.org/join-our-team>, for more information and to apply.

HABITAT FOR HUMANITY HAS AN OPENING

Habitat for Humanity of New Castle County has an opening for a part-time Accounts Payable Specialist. Visit <https://www.habitatncc.org/news/careers/>, for full job descriptions and to apply.

TECH IMPACT HAS OPPORTUNITIES

Tech Impact has five remote openings in their Wilmington location. Remote Openings include:

1. Technical Account Manager
2. Tier 1 Service Desk Engineer
3. Mobile Application Developer
4. Microsoft 365 Specialist/Engineer
5. Cybersecurity Architect/Engineer

Visit <https://techimpact.org/careers>, for full job description, more information and to apply.

IMPACT LIFE HAS OPENINGS

Impact Life Recovery Cafe located at 810 N. Union St., Wilmington, DE has an opening for a Director and Peer Support Service Coordinator, both on-site. The Director position is full-time, and the coordinator position is part-time. The Cafe services include Creative Vision Factory, Workforce Development and School of Recovery Courses.

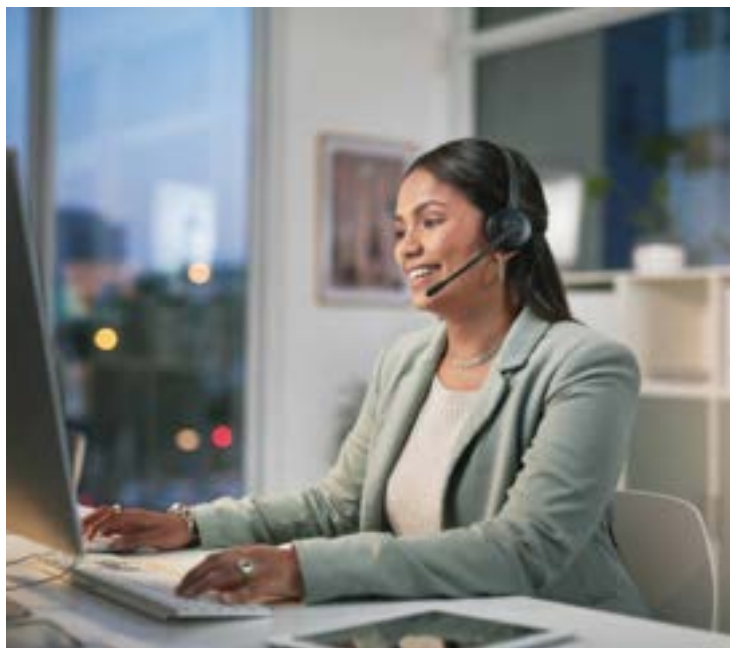
Visit <https://apply.workable.com/impactlifetoday/>, for full job descriptions and to apply.



HAGLEY MUSEUM IS HIRING

Hagley Museum is hiring a Horticulturist II and School Program Guide at their 200 Hagley Creek Road, Wilmington, DE location.

Visit <https://www.hagley.org/about-us/employment>, for job descriptions and steps to apply.



DELAWARE RESTAURANT ASSOCIATION IS HIRING

Delaware Restaurant Association and Foundation, headquartered at 420 S. State Street, Dover, DE is hiring an Office Manager/Executive Assistant. The position is 4 days a week, 9:00 AM to 4:00 PM with some evenings and additional hours based on organizational events may be required. This role manages day-to-day office operations and provide administrative support to the executive team.

Visit <https://www.delawarerestaurant.org/we-are-hiring.html>, for full job descriptions and to apply.

RODNEYSTREET HAS AN OPENING

RodneyStreet provides tennis and supportive academic resources to Young People in and around Wilmington, DE has an opening for a Director of Development. Annual salary range for this position is \$55,000.00 to \$65,000.00.

For more information of RodneyStreet, visit <https://rodneystreettennis.org/programs/>. Resumes should be sent to applyrsta@gmail.com.

STARBUCKS IS RECRUITING

Starbucks is recruiting for Barista and Shift Supervisor positions in three of their stores in Wilmington, DE and one Barista in the fourth store:

- 1737 Marsh Rd.
- 3828 Kennett Pike
- 4125 Concord Pike
- 2209 Farrand Dr. - Barista opening only

For full listing of opportunities and job descriptions, visit <https://careers.starbucks.com/>.



WILMINGTON FIRE DEPARTMENT IS HIRING

Wilmington Fire Department is hiring for their 44th Recruit Academy until February 28, 2025. Base salary for firefighter position is \$49,650.88 and after 5 years \$77,338.57. Applicants must be a U.S. Citizen, 18 years of older, with high school diploma or GED and no residency requirement.

For those interested in being a firefighter, visit <https://www.wilmingtonfirecareers.com/page/recruitment>, for full requirements, recruitment process and to apply.



NCC SUMMER CAMP & SAFETY TOWN POSITIONS HAS OPPORTUNITIES

New Castle County has positions for their 2025 Summer Camp and Safety Town. Applicants must be over 18 years of age, high school graduate and able to participate in outdoor recreation programs.

Positions will be from June 2 though August 15, 2025, at 20 to 40 hours per week with a pay scale from \$16.54 to \$22.16 per hour.

For more opportunities with New Castle County, full job descriptions and to apply, visit <https://www.governmentjobs.com/careers/nccde>.

AMTRAK IS HIRING

Amtrak's Wilmington, DE location is hiring seven positions and one Summer 2025 Intern. Positions being filled are:

- System Engineer Intern
- Sr. Manager Emergency Management
- Manager Regulatory Compliance
- Lead System Ops Specialist
- Sr. Principal Software Engineer
- Director of Services and Standards
- Lead Software Engineer
- Surveyor

Visit <https://careers.amtrak.com/>, for full requirements, recruitment process and to apply.



HOBBY LOBBY HAS OPENINGS

Hobby Lobby has immediate openings in their Wilmington, DE location of 3240B Kirkwood Highway (Prices Corner) for part-time Retail Associates. The starting salary is \$15.00 to \$16.00 per hour. Store hours are Monday through Saturday 9:00 AM to 8:00 PM and closed on Sundays.

For full job descriptions and to apply, visit <https://careers.hobbylobby.com/current-openings/retail-hourly>.



BURLINGTON COAT FACTORY IS HIRING

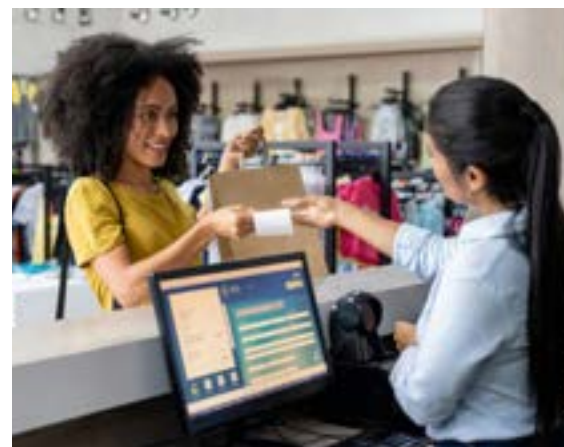
Burlington Coat Factory has five stores with job opportunities at associate level in Wilmington and Newark, DE. Two part-time Cashier Associates (both Newark and Wilmington), the remaining positions are in Wilmington, DE Part-time Retail Stocking Associate, part-time Retail Stocking Team Lead and full-time Retail Sticking Team Supervisor. For full job descriptions and to apply, visit <https://www.burlington.com/careers>.

GAP, INC. IS RECRUITING

GAP, Inc. consisting of Athleta, Banana Republic, Gap and Old Navy have seven positions available in their Wilmington and Newark, DE locations. Positions include both full and part-time opportunities. Positions are:

- Retail Sales Associate - Banana Republic, Newark
- Retail Sales Associate - Old Navy, Brandywine Town Center (2)
- Retail Sales Associate - Old Navy, Christiana Town Center
- Retail Sales Associate - GAP, Christiana (2) one early morning
- Retail Sales Associate - Athleta, Christiana Fashion Center

For job descriptions and to apply, visit https://www.gapinc.com/en-us/careers/old-navy-careers?mlink=5151,1,Footer_Careers.





TRINITY HEALTH HAS OPENINGS

Trinity Health has over 50 positions in Wilmington, DE, majority of openings being at St. Francis Hospital. Below are the categories and counts of the openings:

- Nursing (22)
- Clinical Support (12)
- Non-Clinical Support (6)
- Pharmacy Services (5)
- Physicians (5)
- Education (1)

Visit <https://jobs.trinity-health.org/midatlantic>, for remote opportunities, job descriptions and to apply.

BLOOD BANK OF DELMARVA IS RECRUITING

Blood Bank of Delmarva has seven positions available in Newark, DE including both direct service to patients as well as support staffing. Below are openings in New Castle County:

- Logistics Driver
- Contact Center Associate
- Blood Collection Technician I (Mobile & Christiana)
- Technical Operations Specialist III
- Therapeutic Apheresis RN
- Supervisor, Collections

For job descriptions, openings in Kent and Sussex Counties and to apply, visit <https://www.delmarvablood.org/careers/>.

PLANNED PARENTHOOD HAS OPENINGS

Planned Parenthood of Delaware, has openings for three full-time positions. The positions open are:

1. Nurse Practitioner
2. Nurse Practitioner/Physician Assistant: Director of Clinical Services
3. Health Care Assistant

Visit <https://www.plannedparenthood.org/planned-parenthood-delaware/employment-opportunities>, for job descriptions and to apply.

DHA IS HIRING

Delaware Healthcare Association (DHA) of 1280 S. Governors Avenue, Dover, DE is hiring an Administrative Coordinator. Visit <https://deha.org/Resources/DHA-Job-Openings> for job description and how to apply.

QLARANT HAS OPPORTUNITIES

Qlarant has six remote healthcare opportunities in a various career path.

Visit <https://www.qlarant.com/about/careers/> for full listing, job descriptions and how to apply.



CHILDREN & FAMILIES FIRST IS HIRING

Children & Families First has locations statewide in a variety of career paths. New Castle County opportunities are:

- Accountant
- Middle School-based Therapist
- Parent Partner
- Child Welfare Case Worker

For full job descriptions and to apply, visit <https://www.cffde.org/jobopportunities>.

WILMINGTON FRIENDS SCHOOL HAS JOB OPPORTUNITIES

Wilmington Friends School has four job opportunities at 101 School Rd., Wilmington, DE. Positions available:

- Athletic Director
- Lower School Maternity Leave Preschool Assistant Teacher
- Girls Head Tennis Coach
- Lower School Substitute Teachers

For full job descriptions and to apply, visit <https://www.wilmingtonfriends.org/community/employment-opportunities>.



ST. MARK'S IS HIRING

St. Mark's High School, 2501 Pike Creek Rd, Wilmington, DE is hiring for the 2025 - 2026 school year. The following are the positions available:

- Head Varsity Lacrosse Coach - 2025
- Spanish Teacher
- Theology Teacher
- Science Teacher
- Social Studies Teacher
- Mathematics Teacher

For more information and to apply, visit <https://www.stmarkshs.net/welcome/employment>.

TOWER HILL SCHOOL HAS OPENINGS

Tower Hill School of Wilmington has positions administrative, teaching, coaching, and staff openings. Opportunities include, but not limited to:

- Director of Athletics
- Substitute Teachers and/or Proctors
- Kaleidoscope Lead Teacher
- Assistant/Associate Director of College Counseling
- Associate Director of Advancement
- Substitute Nurse
- Future Coaching Opportunities

For more information and to apply, visit <https://www.towerhill.org/about-us/career-opportunities>.

ST. ELIZABETH SCHOOL IS RECRUITING

St. Elizabeth School of 1500 Cedar St., Wilmington, DE is recruiting for positions in Extended Care, Help Desk Support, and Office Assistant. For full job descriptions and to apply, visit <https://www.steschools.org/about-us/employment>.



EASTERN STATES IS HIRING

Eastern States Construction is hiring a Safety Manager and Eastern States Group has openings for a Self-Storage Property Manager and Property Maintenance Apprentice.

Visit <https://eastern-states.net/careers/> and <https://www.easternstatesgroup.com/careers/>, for more information and to apply.

DELAWARE HEALTH EQUITY COALITION IS RECRUITING

Delaware Health Equity Coalition of 2100 Baynard Blvd., Wilmington, DE, has four positions available. Positions available are:

- Office Assistant
- Physician
- Nurse Practitioner
- Physician Assistant

For full job descriptions and to apply, visit <https://delawarehealthequitycoalition.org/careers/>.

DUPONT COMPANY IS HIRING

DuPont Company is hiring 39 positions in their Wilmington, DE location across multiple business areas and skillset levels. Openings include Apprenticeships and Intern/Co-op opportunities. Visit <https://careers.dupont.com/us/en>, for full listing, job descriptions and to apply.

ONE VILLAGE ALLIANCE IS HIRING

One Village Alliance of Wilmington, DE is hiring a Youth Ambassador, Youth Ambassador Co-Lead, Youth Ambassador Intern and Community Partnership Development Specialist.

Visit <https://www.iamthevillage.org/careers>, for job descriptions and to apply.

CHEMOURS HAS OPENINGS

Chemours has 19 full-time positions between their Wilmington (Headquarters) and Newark, DE locations. These openings include interns and co-op positions. Below are available openings:

- Senior Laboratory Technician, Newark
- Executive Compensation Analyst, Wilmington
- Corporate Risk Manager, Wilmington
- Pigment Technology Leader, Newark
- Electrical Engineer, Newark
- Regulatory Affairs Director, Wilmington

Visit: <https://www.chemours.com/en/careers>, For a full list of opportunities, job descriptions and to apply.



THE BANCORP BANK HAS OPENINGS

The Bancorp Bank has 8 hybrid (after required training period) openings, in Wilmington, DE. Career opportunities include:

- SBL Loan Administrator
- FCRM KYC Analyst
- HR Operations Associate
- VP Payments Compliance
- Deposit Compliance and Monitoring Analyst
- AVP Actimize Developer
- FCRM Investigations and Reporting Analyst I
- VP Enterprise Compliance

For job descriptions and to apply, visit <https://thebancorp.com/company/join-our-team/careers/>.



APPLIED BANK HAS AN OPPORTUNITY

Applied Bank has a full-time Senior Accountant position available at their 2200 Concord Pike, Suite 102, Wilmington, DE location. Education and work experience include a bachelor's degree in accounting from an accredited four-year college or university. As well as a minimum of two years of related work experience required; previous experience in public accounting preferred.

Visit <https://appliedbank.acquiretm.com/home.aspx>, for job description and to apply.

WELLS FARGO IS RECRUITING

Wells Fargo is recruiting for 10 positions located in Wilmington, DE with additional positions in surrounding areas. Below are opportunities available in multiple departments:

- Supervisory Control Specialist
- Teller
- Lead Digital Product Manager
- IT Senior Auditor
- IT Auditor
- IT Audit Manager

For full job listing, job descriptions and to apply, visit <https://www.wellsfargojobs.com/en/>.

CAPITAL ONE IS HIRING

Capital One has 82 opportunities, located in Wilmington, DE over a variety of departments and career paths. Options include Principal Data Analyst, Manager Data Analysis, Currency Transaction Reporting, Lead Software Engineer, Compliance Advisor, and Manager, Chief of Staff.

Visit <https://www.capitalonecareers.com/>, for a full list of openings, job descriptions and to apply.

HIGHMARK HEALTH OPTIONS MEMBERS: YOU DESERVE A REWARD.



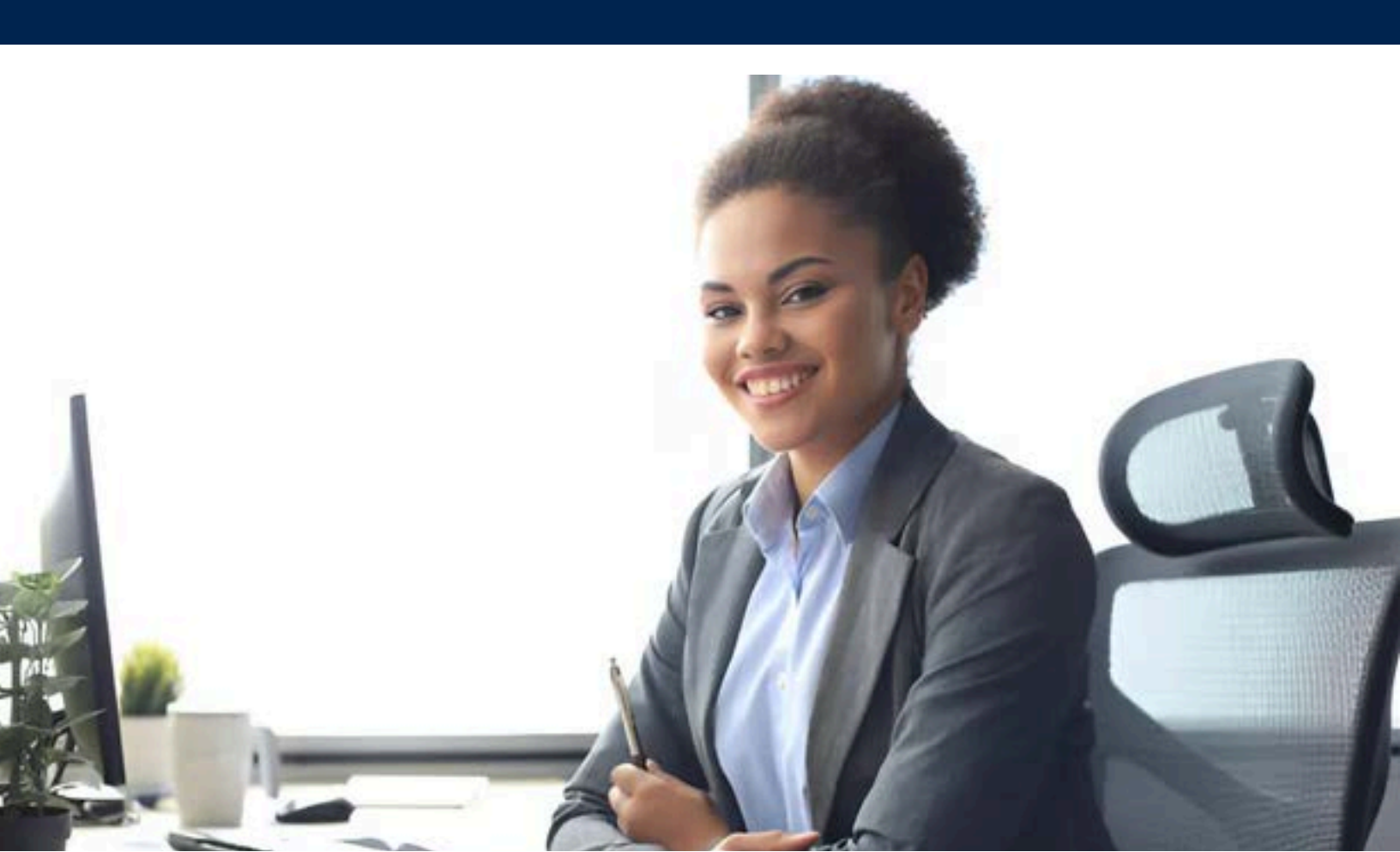
Healthy Rewards is one of your Highmark Health Options benefits. You or your child can earn rewards when you complete certain healthy activities. We'll tell you what healthy activities you qualify for based on your age, gender, and health conditions. You can earn \$10 to \$25 for each healthy activity, such as an annual physical or a blood sugar screening. Healthy activities for babies include a lead screening and baby wellness visits.

Take care of your health.

Sign up and see the rewards you can earn.
Scan, go online, or call today.
my.therapayrewards.com/hho

1-866-469-7973





THE WILMINGTON HOUSING AUTHORITY IS ONLINE

The Wilmington Housing Authority posts regular announcements and events on our website as well as our Facebook, Instagram and LinkedIn pages. Scan the QR codes to visit our website (<https://whadelaware.org/>) and our social media pages.



WHA WEBSITE



WHA FACEBOOK
PAGE



WHA INSTAGRAM
PAGE



WHA LINKEDIN
PAGE

For general questions, inquiries, and other information for Wilmington Housing Authority's Executive Director, Ray Fitzgerald, please contact Azsana Wing, Confidential Executive Assistant, at AWing@whadelaware.org.