

MAY 2025

ANNOUNCEMENTS

THE WILMINGTON HOUSING AUTHORITY'S MONTHLY UPDATES



WHA MADISON GARDENS TOWNHOMES NO LONGER ACCEPTING APPLICATIONS

Madison Garden Townhomes is a low-income tax credit property owned and operated by Wilmington Housing Authority. Effective September 1, 2024, WHA will no longer be accepting preliminary applications. To check the status or make changes to existing applications or for questions regarding the application process, please contact the Management Office at 302-429-6700.

THE WILMINGTON HOUSING AUTHORITY OFFERS AUTOMATED MESSAGING TO RESIDENTS

The Wilmington Housing Authority now provides automated text messages and phone calls to residents. These automated messages allow residents to receive updates, notices, and other resources in real time.

INGLESIDE HOMES HAS IMMEDIATE OPENINGS

Ingleside Homes Retirement Apartments has immediate openings for studio and 1-bedroom apartments. Residents must be 62 years old or older. Monthly rent is 30% of monthly income and pays for all services at Ingleside, which includes:

- Three (3) meals daily
- Weekly housekeeping and maintenance
- 24-hour Security
- Life Alert Pendant
- All Utilities
- Social & Recreational Programs
- Social Services

For more information, contact Renata Maslowski at (302) 575-0250 ext. 2245.



YOUTHBUILD COHORT 2 EARNS NCCER CERTIFICATION

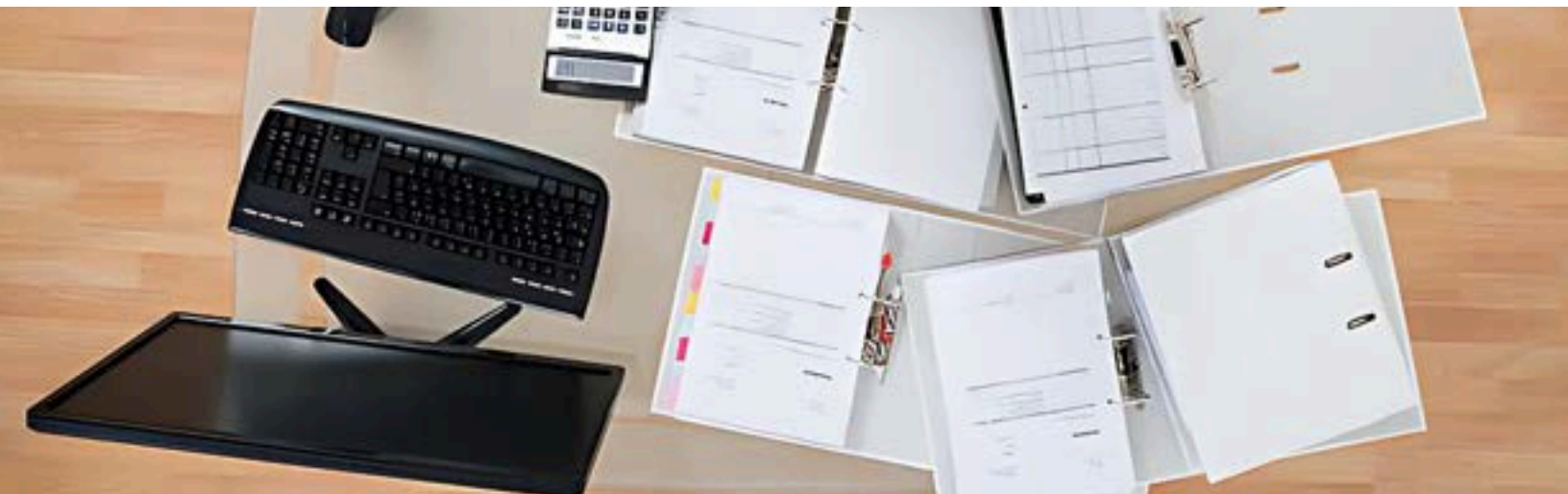
On Thursday, April 3, 2025, Wilmington Housing Authority proudly celebrated the graduation of our second YouthBuild cohort to earn their National Center for Construction Education and Research (NCCER) certification. Held at our education partner site, Energy Coordinating Agency (ECA) in Philadelphia, PA, this milestone marks a significant achievement for the cohort as they successfully completed rigorous hands-on and classroom-based training in construction trades. The NCCER credential is a nationally recognized standard in the skilled trades industry and serves as a critical step toward career pathways in construction, energy efficiency, and sustainable building practices.

This accomplishment reflects the dedication, resilience, and hard work of our participants, who are building the foundation for their future one credential at a time. WHA applauds the efforts of our program partners, instructors, and the families who supported these graduates along the way. We remain committed to empowering young adults through education, training, and workforce development opportunities that lead to meaningful, long-term employment. Congratulations to our newest group of certified NCCER graduates—your future is under construction, and it's looking strong.

For more information on how you or your organization can become a WHA Workforce Development Partner, contact WHADEYouthBuild@whadelaware.org.



Pictured Above: Front row left to right: Gianluca Warner, Gelicia Tate, Charlize Collazo, Ronald Thornton, Johnathan Kilson, Meliva Crippen. Back row left to right: Kamar Miller, Aaron Gist, I-Kyra Miller, Imani Oakley.



SPOTLIGHT ON WHA'S FINANCE TEAM: THE BACKBONE BEHIND THE MISSION

At the Wilmington Housing Authority, our commitment to being responsible stewards of public resources begins with a strong foundation of financial leadership. The Finance Team is a cornerstone of that foundation, working diligently to ensure that every dollar entrusted to WHA is used strategically, transparently, and in direct service of our mission to provide safe, affordable housing for Wilmington's families. Under the leadership of Rosemarie Bizune, Director of Finance, the team carries out critical functions that keep our organization financially sound, mission-focused, and growth-oriented.

This exceptional team includes Senior Finance Operating Manager Vibhuti Talwar, whose leadership in financial planning and forecasting strengthens our long-term strategy, and Finance Operating Manager Michelle Warner, who ensures daily operations run with seamless efficiency. Supporting them are Accounting Clerks Janice Maxson, Eric Bailey, and Neela Word—each bringing diligence and accuracy to a wide range of accounting tasks. Yvonne Mckoy, our Accountant I, contributes valuable support, and Shirlette Green, Assistant to the Director of Finance, keeps the department connected and organized through vital administrative coordination.

What makes this team so unique is not only their technical expertise but also their collaborative spirit. They work hand in hand with departments across WHA, ensuring that financial decisions are informed, aligned, and in the best interest of our residents and partners. Their cross-functional insight plays a critical role in budgeting, performance tracking, and resource allocation, directly impacting the organization's ability to meet community needs and seize new opportunities for growth. Their work isn't just about numbers—it's about making sure every investment WHA makes supports long-term impact.

We are proud to celebrate this hardworking team and thankful for their unwavering commitment to WHA's vision. Their dedication, attention to detail, and passion for financial stewardship make them not only essential to our daily operations but also to our future. If you're inspired by this spotlight, we encourage you to share our newsletter with colleagues and friends, and follow WHA on social media for more behind-the-scenes features. Stay tuned as we continue highlighting the teams and individuals who make WHA a trusted community partner every day.



Pictured Above: Front Row left to right Neela Word, Janice Maxson, Vibhuti Talwar, Michelle Warner. Back row left to right Shirlette Green, Rosemarie Bizune, Eric Bailey

THE PREMIER RAPID HOUSING PLACEMENT TEAM SUCCESSFULLY FINDS HOMES FOR FAMILIES



Pictured Above: Wayne Jefferson, Jennifer Harris and Delilah Espinosa (left to right).

In April 2025, our Premier Rapid Housing Placement Team successfully housed 21 families in safe, clean, and decent homes, despite the scarcity of affordable rental housing. Congratulations to team members Jennifer Harris with the highest placements for the month. April placements included one self-pay family and the other 20 were Wilmington Housing Authority (WHA) Housing Choice Vouchers.

The Premier Rapid Housing Placement Team is dedicated to assisting individuals and families in Wilmington with housing placement. They offer services such as case management, barrier assistance, and rental navigation.

By partnering with landlords, the team helps clients find suitable affordable housing options. These collaborations benefit landlords by aiding in tenant recruitment, ensuring property inspections meet safety standards, and facilitating secure monthly rental payments through a designated portal. To become a client or landlord partner, please contact 302-579-2925.

WHA LEAD ABATEMENT GRADUATES BEGIN NEW CAREERS WITH LOCAL EMPLOYMENT PARTNERS

On Friday, April 4, 2025, eight graduates of WHA's Lead Abatement Training Program took a major step forward in their professional journey by attending a New Hire Orientation with WHA Employment Partners—G & J Delaware Homes and Community Development Solutions. These graduates, now equipped with specialized training and hands-on experience, will begin working on critical lead abatement projects across Wilmington and will have the opportunity to support additional construction assignments as needed. The orientation provided a comprehensive overview of job expectations, safety protocols, and the impact their work will have on creating healthier, lead-safe housing for Wilmington families.



Pictured Above: Lead Abatement New Employee and Employer demonstrating full suit for workplace.

WHA is proud of these graduates for their commitment to learning and their determination to build a better future for themselves and their community. This milestone is a direct reflection of WHA's continued investment in workforce development and self-sufficiency initiatives that open doors to sustainable employment. As these individuals transition from trainees to professionals, we look forward to seeing their growth and the positive outcomes their efforts will bring to our neighborhoods.

For more information on how you or your organization can become a YouthBuild Partner, contact WHADEYouthBuild@whadelaware.org.

CELEBRATING ACHIEVEMENT: TAQUAN TOWNSEND AND NYONNA DRUMMOND EARN HIGH SCHOOL DIPLOMAS THROUGH YOUTHBUILD

WHA proudly congratulates WHA Youth Workforce Development participants Taquan Townsend and Nyonna Drummond on earning their High School Diplomas this April! Their determination, focus, and unwavering commitment to personal growth reflect the spirit of excellence we aim to cultivate through our WHA Youth Workforce Development program. Both Taquan and Nyonna have demonstrated the resilience and drive necessary to overcome challenges and achieve their academic goals—paving the way for new opportunities in higher education, workforce training, and leadership development.



***Pictured Above:** Lead Abatement Co-Hort 5 classroom training session.*

Their success highlights the transformative impact of WHA's investment in youth development and second-chance education. As

they continue to build bright futures, Taquan and Nyonna serve as powerful role models for their peers and the greater Wilmington community. We are proud to celebrate their accomplishments and invite our readers to follow along as more WHA Youth Workforce Development participants take bold steps toward self-sufficiency and success. Be sure to share this proud moment and help us shine a light on the achievements happening right here at WHA.

Email WHADEYouthBuild@whadelaware.org, to become a partner of YouthBuild.



***Pictured Above:** Lead Abatement Co-Hort 5 classroom training session.*

BUILDING SAFER COMMUNITIES: WHA LAUNCHES LEAD ABATEMENT COHORT 5

On Thursday, April 24, 2025, WHA proudly welcomed nine new participants to the fifth cohort of its Lead Abatement Training Program during orientation. With formal instruction beginning on Monday, May 5, this cohort represents a vital step forward in WHA's ongoing commitment to workforce development and public health. Among the group is a participant who enters the program already NCCER-certified, now expanding their construction skillset to include critical lead abatement techniques. This program not only addresses the urgent need for trained professionals to mitigate lead hazards in our communities but also empowers residents with career-building opportunities in high-demand fields. WHA remains focused on developing talent, enhancing job readiness, and fostering safer housing environments through strategic training initiatives.



***Pictured Above:** Lead Abatement Co-Hort 5 classroom training session.*

Email WHADEYouthBuild@whadelaware.org, for more information on Lead Abatement training and to become an employer partner of WHA's Workforce Training Program.

MCMULLEN SQUARE NEW CONSTRUCTION TOWNHOMES AVAILABLE FOR PURCHASE

The Delaware Affordable Housing Group (DAHG), introduces McMullen Square Townhomes, one of Wilmington's premier new construction communities. McMullen Square, located in Northeast neighborhood of Wilmington, DE, offers spacious, three-story townhomes with three bedrooms and 2.5 bathrooms. These newly constructed townhomes boast modern style and coveted amenities, including multi-level living, eat-in kitchens, rear decks, and an oversized garage. Close to schools, and minutes from Wilmington's Train Station, I-95 and I-495, McMullen Square, provides unparalleled convenience. Phase One of McMullen Square will be delivered by the first quarter of 2025. Depending on the lot, the buyers will have the option of a one or two-car garage, allowing for interior customization to suit individual preferences. McMullen Square townhomes come in two primary layouts ranging from 1,767 to 1,982 square feet. For more details on McMullen Square, visit <https://delawareaffordablehousinggroup.com/mcmullen-square-townhomes>.

For further information on purchasing one of the McMullen Square townhomes, contact Gary Williams, Associate Broker at Berkshire Hathaway Home Services Fox & Roach Realtors at gary.williams@foxroach.com.



Pictured Above: Frontage of McMullen Square.



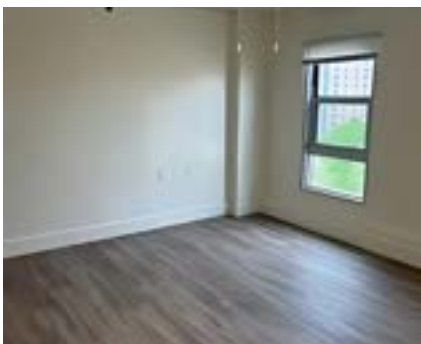
Pictured Above: McMullen Square Main Living Area, Kitchen, Bedroom, Den, and Deck

LUTHER TOWERS ACCEPTING APPLICATIONS FOR THE WAITLIST

Luther Towers of Wilmington is accepting applications for their waitlist for individuals 62 years old or older in their subsidized housing community of studio and 1-bedroom apartments. Experience the perfect blend of comfort and community. These newly renovated spacious apartments feature modern amenities and enjoyable on-site services such as a fitness center, library, computer lab, laundry facility, and inviting community spaces. With easy access to local shops, dining, and public transportation, everything needed is just moments away.



For more information, email luthertowers@pkmanagement.com or call 302-652-3737. Visit <http://www.luthertowers.com/independent-living-apartments/> for more details and to apply.



ONE-STOP SHOP ENVISION CENTER HOMEBUYER'S WORKSHOPS

The WHA One Stop Shop's (OSS) EnVision Center is hosting a Homebuyer's Workshop on June 12, and July 10, 2025, at 2:00 PM. The Homebuyer's Workshop is offered virtually every second Thursday of the month through Microsoft Teams.

For more information or to register, call the WHA OSS at 302-269-9126.

ONE-STOP SHOP ENVISION CENTER WORKSHOPS

The WHA One Stop Shop's (OSS) Envision Center's overall mission is to serve as the catalyst for change for the achievement of "self-sufficiency" for all WHA residents as well as individuals living in the City of Wilmington. Below are the dates for the upcoming workshops.

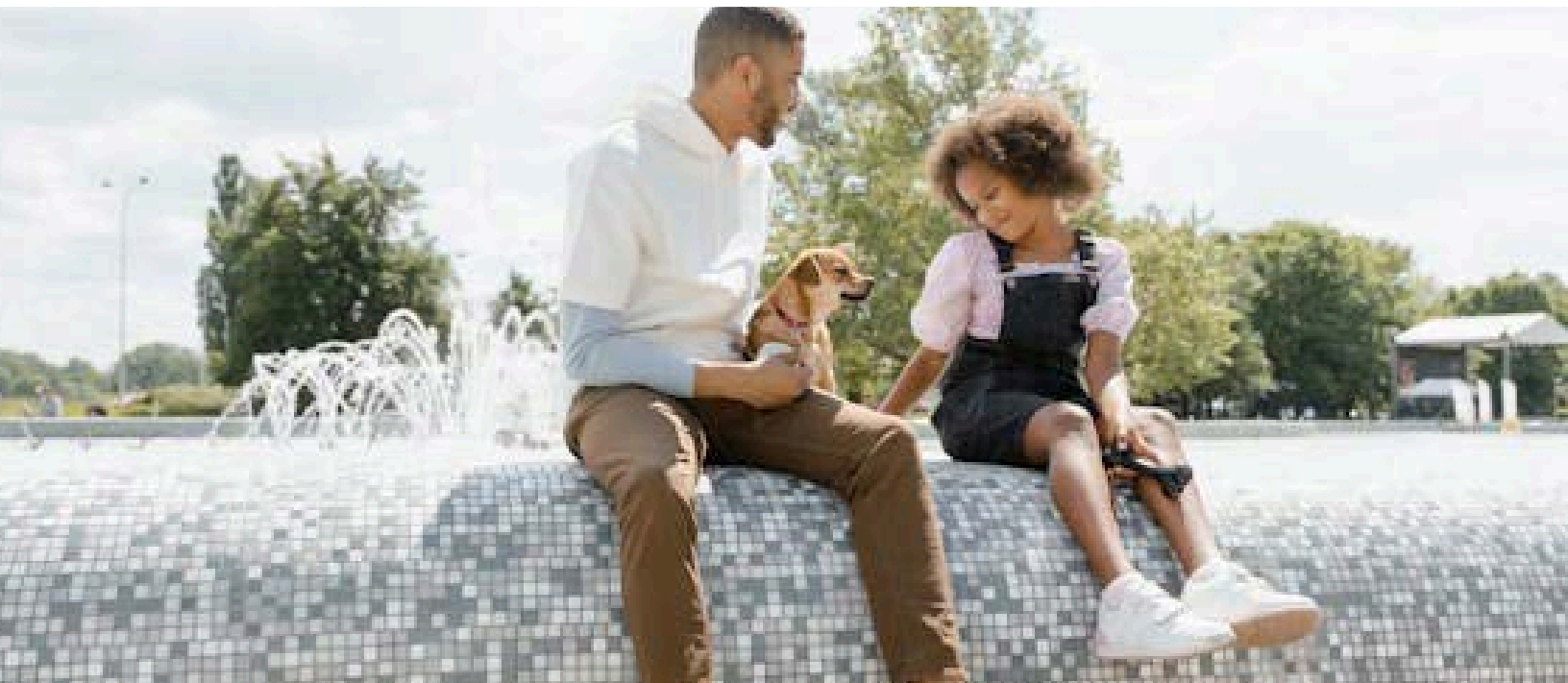
DATE	TIME	LOCATION	CONTACT PERSON	PRESENTER
6/6/2025	2:00 PM	Baynard Apartments 309 W. 18th Street Wilmington, DE 19802	Jamie O'Hara Johara	State Representative RD1
6/13/2025	1:30 PM	Crestview Apartments 2700 N. Market Street Wilmington, DE 19802	Jamie O'Hara Johara	Delaware Quitline
6/20/2025	1:30 PM	Compton Towers 325 E. 5th Street Wilmington, DE 19801	Jamie O'Hara Johara	Delaware Quitline
6/27/2025	1:30 PM	Herlihy Apartments 320 E. 5th Street Wilmington, DE 19801	Jamie O'Hara Johara	Delaware Quitline

FREE MENTAL HEALTH EMERGENCY SERVICES AVAILABLE FOR CHILDREN & YOUTH

The Delaware Guidance Services for Children & Youth, Inc. in partnership with the Department of Services for Children, Youth, & Their Families offers mental health emergency services to children between the ages of 3 and 17 years old in the state of Delaware. Their skilled Crisis Intervention Clinicians come to wherever you are, whenever you need it, to provide crisis support. Services are available 24 hours a day/365 day a year.

Call 1-800-969-HELP (4357) for immediate assistance. Visit <https://www.delawareguidance.org/> for more information.





CHILDREN MENTAL HEALTH ASSISTANCE

Delaware Department of Education offers Project THRIVE which provides free mental health services to eligible Delaware students from pre-kindergarten through 12th grade. School attendance can be at a Delaware public, private, parochial or homeschool.

Project THRIVE services help students who are struggling with traumatic situations, such as physical or emotional abuse, community violence, racism, bullying, and more.

Dial 2-1-1 or text your zip code to 898-211. Let the specialist know you're interested in learning more about Project THRIVE!



PROJECT TOTEM

Project Totem of Aquila Behavioral Health of Delaware offers a variety of services for substance use recovery including case management, health education, life skills training, and referrals, to those 18 years of age and older. Aquila Behavioral Health has a full range of in and outpatient treatment options for substance recovery, including family members.

Visit <https://www.aquilaofde.com/> for more information and next steps.

HIGH BLOOD PRESSURE ASSISTANCE

High blood pressure, or hypertension, is a silent condition that affects nearly half of U.S. adults. Left unmanaged, it can lead to serious health issues like heart disease and stroke. New Castle County has several programs available to help manage your blood pressure:

- Healthy Heart Ambassador Program: <https://dechronicdiseasecoalition.org/>.
- YMCA of Delaware's Blood Pressure Self-Monitoring Program: <https://www.ymcade.org/>.
- ChristianaCare Hypertension Management: <https://christianacare.org/us/en>.
- Westside Family Healthcare: <https://www.westsidehealth.org/>.
- HEALTH for All Program: <https://www.udel.edu/udaily/2025/may/health-for-all-mobile-health-initiative-community-partnership/>.



DELAWARE GUIDANCE SERVICES FOR CHILDREN & YOUTH, INC.

Delaware Guidance Services for Children & Youth, Inc. is Delaware's largest provider of non-residential mental health services for children and families. Their trained clinicians are ready to help children and youth who may be experiencing anxiety, depression, stress, trauma and PTSD, and other behavioral or mental health concerns. Medicaid and all major insurance providers are accepted. For more information visit <https://www.delawareguidance.org/> or call one of the agency locations.

WILMINGTON
(302) 652-3948

NEWARK
(302) 455-9333

DOVER
(302) 678-3020

LEWES
(302) 645-5338

SEAFORD
(302) 262-3505



BLOOD PRESSURE MONITORS TO BORROW

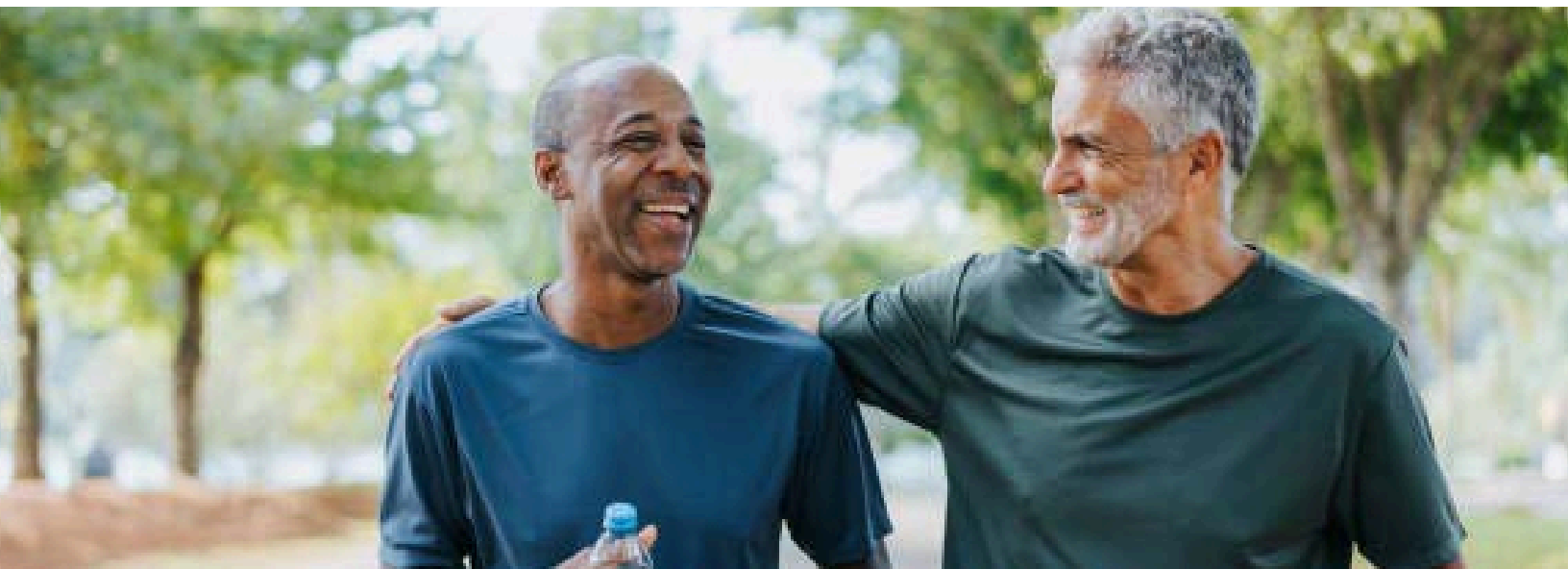
Delaware Libraries has several Omron Blood Pressure Monitors per location for community members to borrow. Community members can borrow monitors up to three weeks for self-monitoring.

Visit https://dela.ent.sirsi.net/client/en_US/default/search/results?qu=blood%20pressure%20monitors to place a hold.

FREE MEDICAL EQUIPMENT

Donate Delaware is offering medical equipment such as walkers, power scooters, hearing aids, wheelchairs and more at no cost to the community. For more information and to request equipment, visit <https://donatede.org/donations-request/>.





RECOVERY FAMILIES WORKSHOPS

IMPACT LIFE offers weekly family-centered recovery family workshops on Tuesdays from 12:00 PM to 2:00 PM at 810 N. Union St., Wilmington, DE.

Visit <https://impactlifetoday.org/adolescent-family-services/> For more information.

A MATTER OF BALANCE

Volunteer 50+ is offering A Matter of Balance program free once per week for eight weeks at Western YMCA, Newark, DE on Wednesdays, from June 4 to July 23, 2025, from 12:30 PM to 2:30 PM. To register call 302-709-9622. A Matter of Balance helps manage falls and boosts activity levels for older adults, particularly those concerned about falling.

For more information, contact Arundhati Ghosh at arundhati.ghosh@delaware.gov or call 302-255-9101.

WPD YOUTH RESPONSE UNIT

Wilmington Police Department offers free short-term counseling to any child who has been exposed to any type of violence or trauma. To learn more or schedule an intake, call 302-576-3183.

HIGHMARK REWARDS PROGRAM



You deserve a reward.

Healthy Rewards is one of your Highmark Health Options benefits. You or your child can earn rewards when you complete certain healthy activities.



To sign up and see the rewards you can earn, go online or call: my.therapayrewards.com/hho 1-866-469-7973



Scan to get started

Reward activities can include:

\$15
Annual well-child visit
(ages 3-19)

\$15
A1c test for people
with diabetes

\$25
Cervical cancer screening

\$15
Annual wellness visit
(age 20 and older)

\$10 per visit/up to 8 visits
Well-baby visit series
(through age 30 months)

\$15
Doctor visit after giving birth
(up to 64 days after delivery)

\$15 per fill/up to 6 fills
Asthma controller medicine
(age 18 and younger)

\$25
Breast cancer screening

\$10
Lead screening
(up to age 24 months)

\$25
Colorectal cancer screening

\$15
Retina exam for people
with diabetes

\$15
Doctor visit after
leaving the hospital

sponsored by
heraPay

Highmark Health Options (HHO) is an independent licensee of the Blue Cross Blue Shield of Delaware. HHO complies with applicable federal, state, and local laws and does not discriminate on the basis of race, color, national origin, age, disability, or sex.



HOUSING FOR VETERANS

Delaware Center for Homeless Veterans (DCHV) provides assistance with emergency and permanent housing for Veterans. Supportive Services for Veteran Families (SSVF) program works with Veterans to provide assistance with need such as, but not limited to finding housing, security deposits, past due rent, utilities, legal matters, employment and mental health support.

Visit <https://dchv.org/> for more information and assistance or call DCHV's SSVF at 302-842-2119.

MINISTRY OF CARING HOUSING OPTIONS

The Ministry of Caring, Inc. of Wilmington offers emergency shelters, long-term and Holistic Housing options throughout Wilmington for individuals and families, including senior citizens. To locate housing to best suit your needs visit <https://www.ministryofcaring.org/> or call 302-652-5523.

IMPACT LIFE RECOVERY HOUSING

IMPACT LIFE offers recovery housing statewide with a range of services and amenities to facilitate long-term sobriety, personal growth and independence. Mommy and Me locations are also available.

Visit <https://impactlifetoday.org/housing-program/> for more information and to discuss admissions, email admissions@impactlifetoday.org or call 302-485-0702.



SOJOURNER'S PLACE

Sojourner's Place of 2901 Governor Printz Blvd., Wilmington, DE offers housing along with individualized services for homeless men and women.

For more information, full program eligibility, and to apply, visit <https://sojournersplace.org/case-managed-services.html>. Prospective residents must call 302-764-4713 to set up an appointment to be interviewed by one of our Case Managers.



EMPOWERMENT FAIR

Wilmington Housing Authority will host their annual Empowerment Fair on Friday, August 15, 2025, at Crestview Apartments Backyard, 2700 N. Market St., Wilmington, DE from 11:00 AM to 3:00 PM. No entry fee to enjoy resource information from community partners, games, door prizes, refreshments, music, face painting and more.

For community partners that would like to host a table call Resident Services at 307-269-9126.



JUNETEENTH RESOURCE CELEBRATION

Black Mothers in Power is hosting a community resource fair for black mothers and families of Delaware on June 21, 2025, from 1:00 PM to 6:00 PM at 2215B N. Washington St, Wilmington, DE. The event is free to attend, and participants will have access to local resources, food, activities, music, giveaways and community wellness.

HOPE DAY

Delaware Dream Center is hosting their annual Hope Day on June 7, 2025, from 12:00 PM to 4:00 PM at Jennie Smith Elementary School, 142 Brennen Dr., Newark, DE. There will be groceries, health vendors, photos, bounce houses, music, giveaways, entertainment and more for the family.

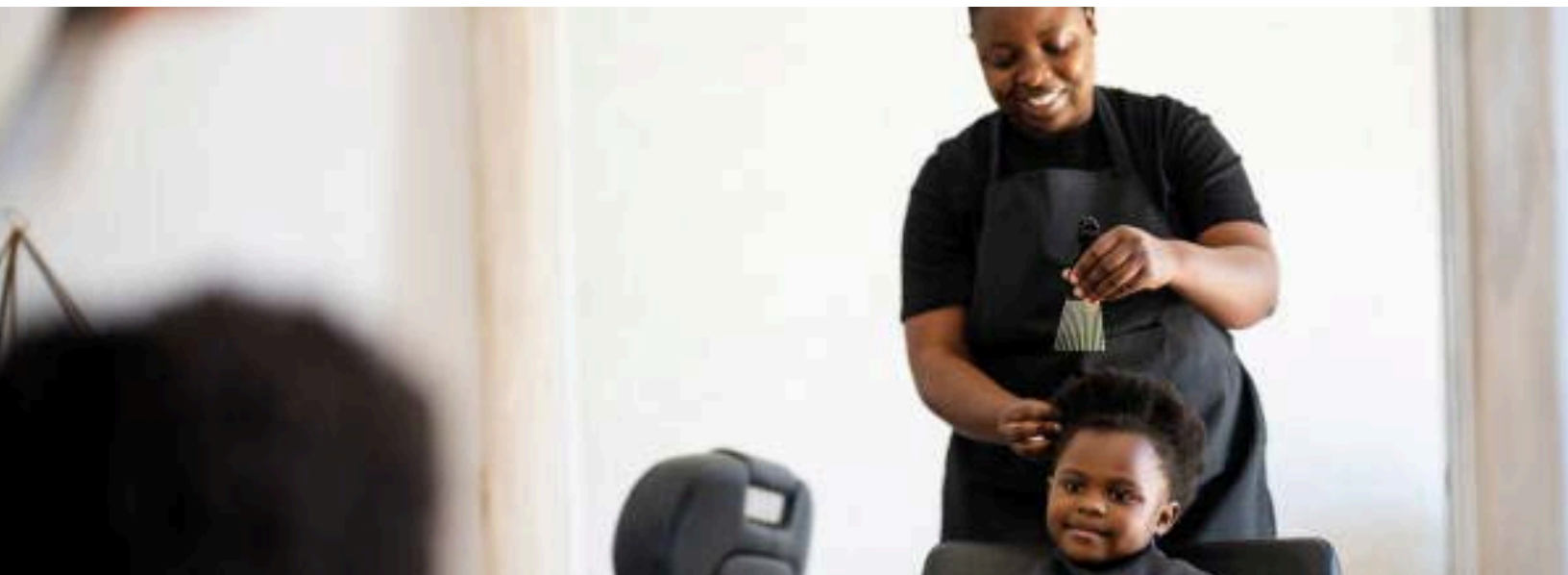
Visit <https://www.hopedaynetwork.org/new/277-2/> for more information.

FREE FINANCIAL COACHING

Stand By Me offers free one-on-one personal financial coaching to all both by phone and video call. Programs offered include:

- 50 Plus
- Workforce Development
- Childcare
- Nexgen
- Hispano
- Home
- Minority Small Business

For more information and to schedule an appointment, visit <https://www.ccwilm.org/bayard-house/https://standbyme.org/programs/> or call 2-1-1.



FREE HAIRCUTS

Every first Monday, One Village Alliance at 31 W. 31st St., Wilmington, DE offers free haircuts from 4:00 PM to 7:00 PM for children 17 years of age and under. Service is first come first serve basis.



FREE SUMMER MEALS & SNACKS

Delaware Department of Education and local schools, community centers, recreation departments, individuals and more partner to provide free summer meals and snacks for children and teens throughout the summer. To find a location near you use one of the following sources:

- Call or Text 2-1-1 or visit <https://delaware211.org/>
- Call 1-866-348-6479 (English) or 1-877-842-6273 (Spanish) -8:00 AM to 8:00 PM, Monday through Friday
- Text "meals" to the automated service at 914-342-7744

LACC CLOTHING CLOSET

Latin American Community Center offers short-term case management including food closet, emergency food and shelter, clothing closet and crisis alleviation. Clients that need clothes and/or shoes can receive gently used clothes and shoes from the LACC. The clothing and shoes are free. A client may request clothing and/or shoes approximately every three months. The program coordinator will need to fill out an intake form, and the client must know the clothing and shoe sizes.

For more information, contact Ramirez Ninoshka, Case Manager, at NRamirez@thelatincenter.org or 302-494-7465 Ext. 7733.

POSITIVE SUPPORT PROGRAM

Beautiful Gate Outreach Center offer programming services for those living with HIV/AIDS. Resources include Support groups, food closet, clothing closet, transportation, medical help, and more. Contact 302-472-3002 for more information and assistance or visit <https://www.bgate.org/hiv-support>.

QUIT SMOKING

Lutheran Community Services in partnership with Delaware Quitline offer Delaware adults assistance to better health in their commitment to quit smoking. Personalized one-on-one coaching and free quit-aid products are available to help. Contact 1-866-409-1858 for more information and assistance or visit <https://quitnow.net/delaware>.



COLLEGE SCHOLARSHIP

Extra Space Storage offers an on-line scholarship for all full-time college students for the fall of 2025 to apply. They are awarding a total of eight \$3,000.00 scholarships to U.S. residents 16 years of age or older.

For more information, qualifications and to apply, visit <https://www.extraspace.com/self-storage/scholarship/>.

CYBERSECURITY TRAINING

Small business owners with a cooperative agreement or grant with the SBA, can access brand-new cybersecurity training designed by Delaware's award-winning Small Business Development Center (SBDC). For more information and to begin on-line training, visit <https://northstarcert.americassbdc.org/>.

YOUTH GOLFING DISCOUNT

Bank of America invites children six to 18 years of age to Golf with Us through a free one-year membership to Youth on Course, giving them access to tee times for \$5 or less at thousands of courses. All skill levels are welcome. Cart fees, walking fees, and other additional fees may apply, check the course map for full pricing and availability before making a reservation.

Delaware locations are currently in Kent and Sussex Counties. For more information and to register, visit https://youthoncourse.org/bofa-golf-with-us?cm_mmc=EBZ-EnterpriseBrand_-vanity_-EB01VN000A_golfwithus_-N/A.

ENERGY SAVINGS

Tax credits and rebates have been made available by the Inflation Reduction Act. Also, there are ordinary daily living tips to saving energy in homes. For more information, visit <https://www.energy.gov/save>.

SCHOLARSHIP DIRECTORY

Access Scholarships is an on-line database of scholarship opportunities to access at no cost. Visit <https://accessscholarships.com/scholarship/asm-global-stars-scholarship-program/>, to identify scholarships.

DELAWARE AEROSPACE ACADEMY

Delaware Discovery Center in Smyrna, DE is offering Delaware Aerospace Academy full day and overnight camps this summer. The Academy provides hands-on training and experiences in aerospace-related activities and fields, for girls and boys in first through 10th grades. A limited number of need-based scholarships are available upon request. Free transportation from and to Newark daily at no cost (limited seating). If interested in bus transportation, contact Lynne Bloom at LynneB@dasef.org or call 302-834-1978.

For more information and to apply, visit <https://dasef.org/aerospace/aerospace.htm>.



YOUTH FOOTBALL CAMP

Red Lion Christian Youth Sports Ministry, located at 1390 Red Lion Rd., Bear, DE, is hosting Youth Football Camp for grades first through 8th for boys and girls and all skill levels. Camp week is June 23 to June 27, 2025, from 8:00 AM to 12:00 PM.

For more information and to register, visit <https://www.rlcylf.org/> or call 302-345-6182 for further assistance.

21ST CENTURY COMMUNITY LEARNING CENTERS

21st Century Community Learning Centers (21st CCLCs) are federally funded, afterschool and summer programs. 21st CCLCs are internally designed to complement students' regular academic programs, promote academic support, and engage school communities. Delaware 21st CCLCs are offered in over 30 elementary, middle, and high schools. For more information and a list of schools with 21st Century programming, visit <https://education.delaware.gov/educators/whole-child-support/family-services/nita-m-lowey-21st-century-community-learning-centers/>.

SERVIAM GIRLS ACADEMY ENROLLMENT

Serviam Girls Academy of 90 Washington St., Wilmington, DE is accepting enrollment for grades 5th through 8th with limited space for 8th graders. Serviam is a tuition free private middle school for girls.

Visit <https://www.serviamgirlsacademy.org/> for more and to apply.

WHACC SUMMER RECREATION

William Hicks Anderson Community Center (WHACC) at 501 N. Madison St., Wilmington, DE is offering summer recreation from June 23 to August 22, 2025, from 9:00 AM to 3:30 PM for children six to 13 years of age. Registration deadline is June 13, 2025. Camp activities include recreation, education, culture, arts & crafts, and more along with breakfast, lunch, T-shirt and Weekly Trips.

For registration or information, contact Mrs. Melissa Davis, activities Coordinator, at 302-803-0831 or WHACC at 302-571-4266.



BASKETBALL CLINIC

My Sister's Keeper (MSK) Community Center of 1009 Sycamore St., Wilmington, DE hosts Dreamchasers Basketball Clinic at no cost to participants each Sunday from 12:00 PM to 3:00 PM for children eight to 13 years of age. Breakfast and water are provided.

For more information on MSK Community Center programming, visit <https://www.iammsk.org/about>.

STEAM-TASTIC ADVENTURE

Chuck E. Cheese located at 3601 Silverside Rd., in Wilmington, DE is partnered with <https://stem.org/> to provide a fun STEAM program for children Kindergarten to 5th grade. The programing is divided into grade levels. Game play and food on-site at their location in Wilmington, DE. Teacher guides are provided.

For more information, pricing and to register, visit <https://www.chuckecheese.com/wilmington-de/education-programs/>.



FREE MUSEUM PASSES

Individuals with adult with a library card from their local library are eligible for the library's Museum Pass Program. The program allows you to reserve free tickets to the Brandywine Zoo, Biggs Museum of American Art, Brandywine Conservancy and Museum of Art, Delaware Historical Society, Hagley Museum, Delaware State Parks, Winterthur Museum, Rockwood Park and Museum, Historic Odessa Foundation and Tyler Arboretum. One museum pass may be borrowed per library card at a time. You may reserve up to two passes per library card within a 60-day period.

For more information and to register, visit <https://lib.de.us/museum/>.

CREATIVE LOBBY

Creative Lobby is an art program for all skill levels located at Bellevue Community Center, 510 Duncan Road, Wilmington, DE. Hours of operation are Mondays from 4:00 PM to 6:00 PM and Wednesdays from 6:00 PM to 8:00 PM for kindergarten to 12th grade. For more information, visit <https://www.bellevuecc.org/creative-lobby>.



SKATE CLASSES

One Village Alliance host free skate classes each Thursday from 6:00 PM to 7:30 PM at 31 W. 31st St., Wilmington, DE for those five years of age and older. Visit <https://www.iamthevillage.org>, for more information and to register.

CHOIR SCHOOL OF DELAWARE

Choir School of Delaware offers an after-school program that welcomes students from a broad region in the Wilmington, DE area from the age of seven to 17. No prior music experience is required. Tuition is \$400.00 per year. Full scholarships are available after applying for Purchase of Care through the State of Delaware.

For more programming information and to register, visit <https://choirschoolofdelaware.org/prospective-students/>, or contact Sophia DiLeo at 302-543-8657 or sdileo@choirschoolofdelaware.org to learn more.

PALW SAFE HAVEN

Police Athletic League of Wilmington (PALW) offers Safe Haven, located at 3707 N. Market St., Wilmington, DE. Individuals from the age of eight to 21 are offered free access to the gymnasium, music and art, games, computer usage and more. Also, free dinner is provided. Extended hours take place on Tuesdays and Thursdays until 10:00 PM Monday through Friday and Saturdays from 3:00 PM to 6:00 PM. For more information, visit <https://palw.org/>.



YOUTH SUMMER PROGRAMMING

Delaware Youth Sports Coalition has opened a community board of Youth Summer Programming. Visit <https://deysc.org/summer-programs/> for free access to summer program options.

ODYSSEY SUMMER CAMP

Odyssey Charter will be hosting Summer Camp at 4319 Lancaster Pike, Wilmington, DE from June 16 to August 28, 2025. Camp is open to both boys and girls from the ages of rising Kindergarten to rising sixth graders and you *do not* need to be an Odyssey Charter School student to attend. A camp day is 8:30 AM to 3:30 PM at \$285.00 per week. Four-day weeks are \$230.00 (weeks with holidays - June 19th, July 4th, and August 29, 2025).

Visit <https://camp-at-odyssey.square.site/> for more information and registration.

DE STATE PARKS SUMMER CAMPS

Delaware State Parks offer Summer Camps throughout the season at multiple locations statewide. Scholarship opportunities are available. Summer camp age groups and costs vary based on program selected. Camp locations include, but not limited to:

- Alapocas Run
- Brandywine Creek
- White Clay Creek
- Bellevue
- Brandywine Zoo

For more information, visit <https://www.destateparks.com/summer-camps/>.

YOUTH ART CAMP

Delaware Art Museum of 2301 Kentmere Parkway, Wilmington, DE offers a variety of Youth Art Camps for children two to 17 years of age throughout the summer. Class times and focuses vary with age group. First classes begin June 16, 2025, with member discounts available.

Additionally, The Delaware Art Museum's Art Smart Fund for Student Enrichment provides scholarships for School Field Trips, Summer Art Camp, Youth Studio Art Classes, and Adult Studio Art Classes for teens age 15 - 17 to those who demonstrate financial need and an interest in the arts. For more information and to access the form, visit <https://delart.org/classes/art-smart/>.

For more information and to register, visit <https://delart.org/class-category/class-type/youth-camp/>.





CAMP IMAGINATION

Bellevue Community Center is hosting Camp Imagination for 11 weeks at \$349.00 per week starting June 9, 2025. A variety of enrichment activities are offered throughout the summer. Campers must have completed Kindergarten and no older than 12 years of age. Purchase of Care is accepted.

Visit <https://www.bellevuecc.org/camp-imagination>, for more information and registration.

TYLER'S CAMP

Tyler's Camp a program of SummerCollab of New Castle, DE are registering Delaware elementary and middle school students. Campers can choose from a suite of technology, sports, and arts opportunities, with little to low cost of charge for Delaware's highest-need youth.

Visit <https://summercollab.org/our-work/tylers-camp/>, for more information and to register.

SMARTSUMMER

Cab Calloway School of 100 N. Dupont Road, Wilmington, DE offers summer camps beginning with rising first graders. Camp is hosted Monday through Friday 9:00 AM to 3:00 PM. Before Camp is 7:00 AM to 9:00 AM and After Camp is 3:00 PM to 5:30 PM. Grab & Go Breakfast served until 8:35 AM and 30-minute lunch is served between noon and 1:00 PM. Both breakfast and lunch are free. For more information and to register, visit <https://cabsmartsummer.org/>.



CITY OF NEWARK PARKS AND RECREATION SUMMER CAMP

City of Newark Parks and Recreation Department are offering weekly and full summer camp options for six to 12-year-olds. Camps take place at various locations with a variety of themes and concentrations throughout Newark.

For more information, full details and registration information, visit <https://newarkde.gov/DocumentCenter/View/19387/2025-Summer-Camp-Guide>.



AUTONOMOUS DRIVING ACADEMY PRE-COLLEGE SUMMER PROGRAM

University of Delaware is hosting Autonomous Driving Academy Pre-College Summer Program for high school students interested in engineering, robotics, artificial intelligence, computer science and programming. The program is being offered Monday July 14, to Friday July 18, 2025.

Potential financial options available; discounts or scholarship opportunities are available for military and veterans, UD employees, UD alumni, and two or more siblings from a same family.

Visit <https://www.pcs.udel.edu/autonomous-driving/> for more information and to register.



WILMINGTON BALLET SUMMER CAMPS

Wilmington Ballet, 1709 Gilpin Ave., Wilmington, DE offers two Summer Camps and weekly classes based on age and skill sets. See below for the camp offerings:

- Dance Exploratory Camp - ages 6-9 - Monday through Friday 9:00 AM to 12:00 PM.
- Dance Intensive Camp - ages 10-17 - Monday through Friday 9:00 AM to 3:30 PM.
- Summer Weekly Classes - Growth and Maintenance for all levels of experience and technique.

Visit <https://www.wilmingtonballet.org/summer-2025> more information on costs, dates and to register.

AMERICAN KARATE STUDIO CAMP

American Karate Studio 1812 Marsh Road, Wilmington, DE location is offering weekly summer camps for five- to 12-year-olds. No prior Martial Arts experience is necessary.

Camp is hosted Monday through Friday from 9:00 AM to 3:00 PM. Extended hours in the morning from 7:30 AM or afternoon until 5:30 PM can also be available for an additional cost. Campers must bring two snacks and a lunch each day.

For more information and registration, visit <https://delawarekarate.com/summer-camp>.

CITY POOLS

City of Wilmington Department of Parks and Recreation offers five pools for free swimming at during public swim hours. The pools are staffed by Red Cross-certified lifeguards and feature changing facilities and showers. Individuals under the age of 12 must be accompanied by an adult. Pools will open as of June 16, through August 15, 2025. Youth Services offered are:

- Eden
- Joseph R. Biden (Prices)
- Brown
- William "Hicks" Anderson Community Center
- P.S. DuPont

For more information and hours of operation visit <https://www.wilmingtonde.gov/home/showpublisheddocument/13032/638811733669430000>.



GIRLS, INC. SUMMER CAMP

Registration is open for Girls, Inc. of Delaware 2025 STEAM Summer Camp in Wilmington, DE. Camp is being hosted July 7 to August 1, 2025.

Visit <https://girlsincde.org/programs/2025-summer-camps> for more information and to register.

AIR MOBILITY COMMAND MUSEUM

Air Mobility Command Museum located on the Dover Air Force Base of Dover, DE. Museum hours are Wednesday through Sunday 9:00 AM to 4:00 PM with free admission and parking.

Visit <https://www.amcmuseum.org/> for more information and special events including half day summer camp.

NEWARK POOLS

City of Newark offers free swim at Tuesday through Sunday from 12:30 PM to 5:00 PM June 16 to August 26, 2025. The pools are at Dickey Park Pool, 60 Madison Drive, Newark, DE and the George Wilson Center Pool, located at 303 New London Road. Visit <https://newarkde.gov/172/Pools>, for more information.

CITY OF WILMINGTON SPRAY PARKS

City of Wilmington water spray parks are open seven days a week from 9:00 AM until 6:00 PM beginning June 24, 2025, through September 1, 2025, at the following locations:

- Helen Chambers Park, 6th and Madison Streets
- Mack Park, West 6th Street and North Ford Avenue
- Father Tucker Park, 9th and Lincoln Streets
- Kosciusko Park, 601 S. Franklin Street
- Woodlawn Park, 4th and Ferris Streets
- Rodney Square, 10th and King Streets
- Brown-Cihocki, Duncan Street and 8th Avenue

Visit <https://www.wilmingtonde.gov/government/city-departments/parks-and-recreation/city-pools-and-spray-parks> for more information.



YMCA OF DELAWARE RECRUITMENT

YMCA of Delaware are hiring nine part-time day camp workers across three New Castle County locations. Candidates must be at least 16 years of age and starting salaries are \$15.00 per hour. Opportunities available are Day Camp Unit Director, Camp Specialist, Jr. Camp Counselor and Sr. Camp Counselor. In addition to these opportunities, there are 105 statewide in multiple departments requiring various skill sets.

Visit <https://www.ymcade.org/ymca-careers/>, for more information and to sign-up.

BALANCE COACHES NEEDED

A Matter of Balance are seeking Coaches statewide. A Matter of Balance is a program to help seniors manage falls and increase their activity levels. Become a Coach and receive free training.

Contact Danielle Briggs at Danielle.Briggs@delaware.gov or 302-515-3020 or Arundhati Ghosh at Arundhati.Ghosh@delaware.gov or 302-255-9101, for more information and to register.

SCW VOLUNTEER OPPORTUNITIES

Skate Club of Wilmington (SCW) has many volunteer opportunities in areas such as club competitions, special events, announcing, music, photography, videography, ice monitoring, test sessions, special events, the Board of Directors, fundraising, event reporters, public relations, committees, and many other tasks. For more programming information and to register, visit <https://skatewilm.com/about-us/volunteers/>.

CITY OF NEWARK VOLUNTEER OPPORTUNITIES

City of Newark has volunteer opportunities seasonally and year-round. Examples of areas to volunteer include:

- After School
- Parks
- Youth Sports Coaches
- Special Events

For more information and volunteer enrollment, visit <https://newarkde.gov/160/Volunteer-Opportunities>.





SUMMERCOLLAB VOLUNTEERS

The Summer Learning Collaborative (SummerCollab) of 14 Halcyon Drive, New Castle, DE is committed to providing enriching out-of-school time learning experiences for low-income and at-risk children, enhancing academic skills and overall knowledge.

For more information, visit <https://summercollab.org/about-us/who-we-are/>. To register, visit <https://summercollab.org/volunteer-application/>.

FOOD PACKING VOLUNTEER

The Harvest Outreach People's Project (HOPP) of Wilmington, DE hosts a monthly Pack & Pray event statewide. Their New Castle County event takes place at Asbury United Methodist Church at 300 Basin Rd, New Castle, DE. Volunteers come together to prepare fresh fruits and vegetable for 3,000 families. The next three events will take place on Wednesday, June 25, July 23, and August 20, 2025, from 9:00 AM to 1:00 PM.

For more information, visit <https://thehopp.org/events/>.

VOLUNTEER FOR VETERANS

Host a Coffee Station Collection or personally donate products for our local Veterans visiting the Wilmington Veterans Center. Needed items include Coffee K-Cups (regular, decaf and flavored), shelf-stable & fresh creamers, tea bags, Hot Chocolate K-Cups, Sweeteners (sugar and alternatives), Disposable Cups with lids, napkins, snacks and Stirrers.

Drop off at the Wilmington Veteran Administration Center, 1601 Kirkwood Hwy, Wilmington, DE 19805, Volunteer Services Office of James Coty (second entrance across from parking garage) and labeled for the Wilmington Veteran Center.

COUNCIL ON HOUSING MEMBERS NEEDED

Delaware State Housing Authority (DSHA) are seeking members to join The Council on Housing for DSHA. Council members advise the Governor, Housing Director and General Assembly on Housing Development Fund (HDF) allocations. The Council meets the second Wednesday of each month and includes three subcommittees: Policy, Communications and Loan Review.

Visit <https://governor.delaware.gov/boards-and-commissions/> to submit an application.





PHOTO CONTEST

America's Favorite Photos offers a monthly photo competition with a grand prize of \$10,000.00. This organization looks to encourage, support, and promote photography as an art form all can create, share, and celebrate together. Visit <https://americasfavoritephotos.com/> to enter your photo.



STERILE PROCESSING TRAINING

Global Instrument Management Solutions provides training on site at ChristianaCare in Newark, DE. Training is hands-on to earn a CRSCT (industry recognized certification) with test prep from instructors. Access to internships and job opportunities are also provided. No degree is required.

For more information and to enroll, visit <https://globalinstrumentmanagementsolutions.com/>.

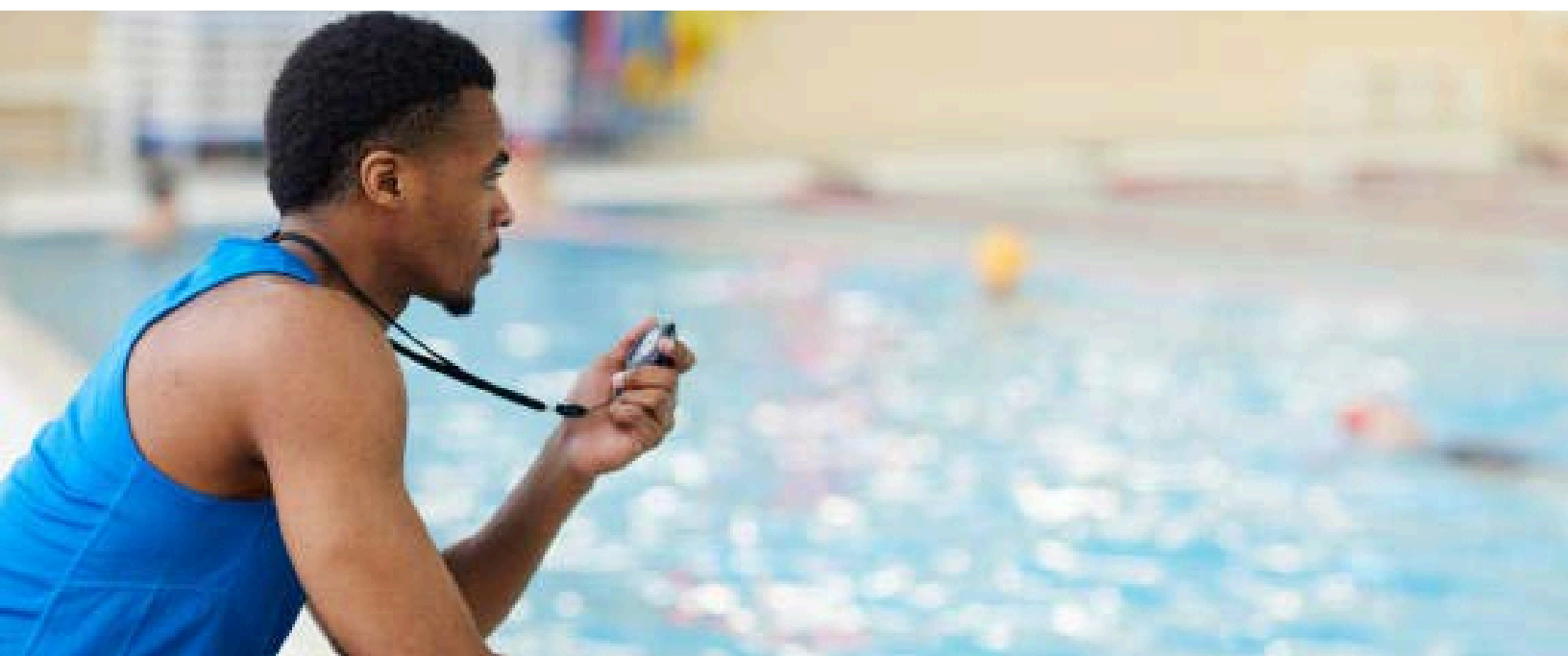
CULINARY SUMMER CAMP

Humanity's Kitchen of Wilmington, DE offers career exploration in culinary arts through on-site classes in New Castle County and virtual classes in Kent & Sussex Counties at no cost. The program provides opportunities for students with disabilities, finishing 8th graders through 11th graders, ages 14 to 22 or those that are in the 18 to 22 Educational Program.

For more information and to enroll, visit <https://www.humanityskitchen.org/culinary-summer-camp/>.

JUNIOR ENVIRONMENTAL TRAINING

Project J.E.T (Junior Environmental Training) of West End Neighborhood House in Wilmington, DE is a free program for Delaware residents from 16 to 25 years of age. The project aims to create environmentally conscious communities capable of contributing to a healthier planet and sustainable economy. Classes are 9:00 AM to 1:00 PM Tuesday to Thursday, one day on-site and two days virtual. For more information and to register, call or email 302-658-4171 ext. 143 or aroberts@westendnh.org.



NEW CASTLE COUNTY YOUTH EMPLOYMENT OPENINGS

New Castle County has youth employment opportunities available for income-eligible youth ages 14 to 21 years of age. Working permits will be required for selected youth 17 years of age and younger. Auxiliary aids and services are available upon request to individuals with disabilities. Selected applicants will be paid \$15.00 per hour. Opportunities include, but not limited to:

- Coding
- Early Childhood
- Aquatics
- Agriculture
- Museums and Libraries
- Construction
- Health Careers

For more information and apply, visit <https://www.newcastlede.gov/859/Youth-Workforce-Development-Program>.

JR. YOUTH DEVELOPMENT PROFESSIONAL OPPORTUNITY

Boys and Girls Clubs of Delaware in New Castle, DE are hiring a Jr. Youth Development Professional. This opportunity is for individuals Fourteen (14) years of age or older. This is a full year position with work timeframes based on age of candidate.

- School Year, Monday to Friday, 3:00 PM to 6:00 PM, may be required to work full day shifts on school closing days.
- Summer hours: Monday to Friday, 7:00 AM to 6:00 PM. Typically scheduled to work 7 to 8 hour shifts each day with some flexibility.



For more information and to apply, visit <https://www.bing.com/jobs?q=new%20castle%20county%20delaware,%20youth%20employment&scp=0&jid=1322793503.Retro&rb=0&rc=20&L2=true&c=1&form=JOBL2S>.

WILMINGTON JOB CORPS IS RECRUITING

Wilmington Job Corps provides free career training to low-income individuals 16 to 24 years old at 9 Vandever Avenue, Wilmington, DE. Two training opportunities available are Culinary Arts and Office Administration. Visit <https://wilmington.jobcorps.gov/train> to complete the application and more information.

WENH WORKFORCE DEVELOPMENT PROGRAM

West End Neighborhood House (WENH) has a Workforce Development Program that provides services to clients along with job placement support. Services offered include:

- Digital Literacy
- First Aid/AED & CPR Training
- Occupational Skills Training
- Environment Technician Training
- Construction Training
- Customer Service Specialist
- Warehouse Logistics Specialist
- ServSafe Food Handler & Manager
- Technology Training



For more information, call 302-658-4171 ext. 161 or visit <https://westendnh.org/programs/academic-education/>.



SCHOOL-AGE PROFESSIONALS TRAINING

To become a school-age professional who supports children from kindergarten through age 12 in licensed childcare centers, Delaware offers several opportunities to earn certifications based on the type of position you would hold. Below are the positions for certification:

- School-Age Intern
- School-Age Site Assistant
- School-Age Administrator

Additionally, there is an opportunity for certification to work with Birth through Second grade through the Delaware Department of Education. Below are the positions for certification:

- Early Childhood Intern
- Early Childhood Assistant Teacher
- Early Childhood Teacher
- Early Childhood Administrator

For more information visit https://education.delaware.gov/educators/child-care-licensing-and-careers/educator-credentialing/become_an_educator/educator_requirements_schoolage/.

WHA PARTNERS WITH DSAAPD TO PROVIDE SUPPORT TO RESIDENTS

The Wilmington Housing Authority partners with the Division of Services for Aging and Adults with Physical Disabilities (DSAAPD) to expand the support and resources available to residents. DSAAPD staff members are onsite at several WHA locations to provide information and other resources to residents, including referrals, counseling options, and other resources.

DSAAPD's mission is to promote dignity, respect, and inclusion for older adults and people with disabilities. Residents can connect with DSAAPD staff members every month in the community room of the following locations:

DAY	LOCATION	TIME
TUESDAYS (July 15th & Aug. 19th)	BAYNARD APARTMENTS (309 W. 18th Street, Wilmington, DE 19802)	11:00 AM to 1:00 PM
TUESDAYS (July 15th & Aug. 19th)	CRESTVIEW (2700 N. Market Street, Wilmington, DE 19802)	2:00 PM to 4:00 PM
WEDNESDAYS (July 16th & Aug. 20th)	COMPTON TOWERS (325 E. 5th Street, Wilmington, DE 19801)	11:00 AM to 1:00 PM
WEDNESDAYS (July 16th & Aug. 20th)	HERLIHY APARTMENTS (320 E. 5th Street, Wilmington, DE 19801)	2:00 PM to 4:00 PM
THURSDAYS (July 16th & Aug. 20th)	PARK VIEW (1800 N. Broom Street, Wilmington, DE 19802)	11:00 AM to 1:00 PM



LEADERSHIP DE IS RECRUITING

Leadership Delaware of 112 S. French St., Wilmington, DE, is recruiting for a full-time Director, Community Impact. For full job description, visit <https://leadershipdelaware.org/join-our-team>, applicants submit cover letter and resume to careers@leadershipdelaware.org.

EASTERSEALS IS HIRING

Easterseals Delaware & Maryland's Eastern Shore is hiring 24 positions statewide with 10 full-time in New Castle County. Positions available are over multiple sites in various departments. Opportunities include:

- Support Specialist
- Direct Support Professional
- Adult Day Health Program Registered Nurse
- Center Administrator - RN's encouraged to apply
- Registered Behavior Technician
- Community Support Specialist
- PAS Access Representative
- Activity Coordinator
- Speech Language Pathologist
- Board Certified Behavior Analyst

Visit <https://demd.easterseals.com/about-us/work-for-easterseals>, for more organization information, job descriptions and to apply.

OVA HAS AN OPPORTUNITY

One Village Alliance (OVA) of Wilmington, DE has an opportunity for a Director of Events & Engagements in their Wilmington location. Visit <https://www.iamthevillage.org/copy-of-get-involved>, for job description, more opportunities and to apply.

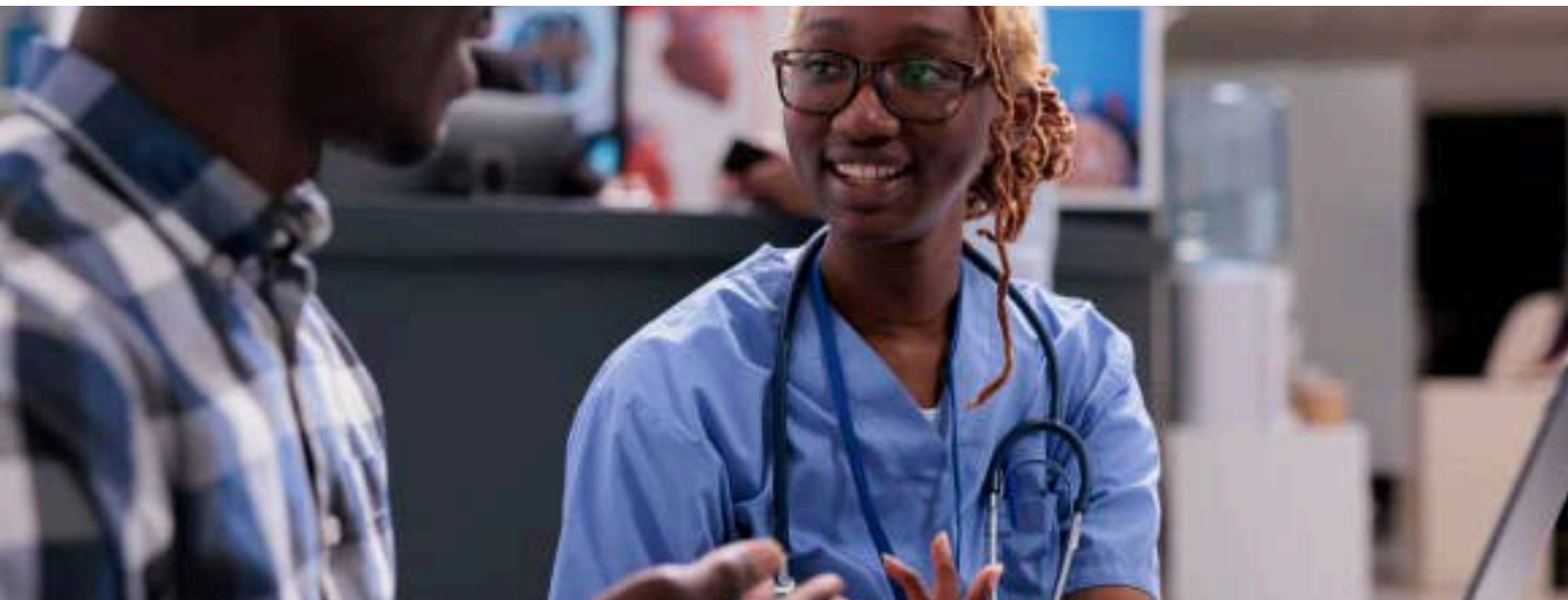
JOBS FOR DELAWARE GRADUATES OPENINGS

Jobs for Delaware Graduates has openings for full-time High School Teachers statewide. B.S. is required but will train. Starting Salary: \$42,500.00. For job description and next steps to apply, visit <https://jobsdegrads.org/join-our-team/>.

HOPE COMMISSION CLEAN TEAM HAS AN OPENING

Hope Commission Clean Team has a part-time opening for those 18 years of age or older at \$15.00 per hour from 7:00 AM to 2:00 PM. This position is focused on outdoor cleaning projects.

For more information, contact Terell Watson at twatson@wilmhope.org.



SUMMERCOLLAB OPENINGS

SummerCollab of New Castle has two entry-level openings for their Tyler's Camp Program in Newark, DE. Day Camp Counselor is part-time and Day Camp Instructor as a seasonal position. The Counselor opportunity is \$15.00 per hour and the Instructor opportunity is \$17.00 to \$20.00 per hour.

For job descriptions and to apply, visit <https://summercollab.org/take-action/join-our-team/>.

FAIRWINDS EARLY LEARNING CENTER IS HIRING

Fairwinds Early Learning Center of Bear, DE are hiring for Lead and Assistant Teachers. Associate or bachelor's degree in early childhood education or TECE 1 & 2 Certificate. Reimbursement for TECE 1 & 2 certificate courses may qualify for reimbursement.

For more organization information and to apply, visit <https://www.fairwindschristianschool.com/fairwinds-early-learning-center>.

SKATING CLUB OF WILMINGTON IS HIRING

Skating Club of Wilmington, located at 1301 Carruthers Lane, Wilmington, DE is hiring a part-time Zamboni Operator for evenings and weekends. For job description and to apply, visit <https://skatewilm.com/zamboni-operator-wanted/> or call 302-656-5005.

HENRIETTA JOHNSON MEDICAL CENTER IS HIRING

Henrietta Johnson Medical Center has a location in Wilmington, DE and Claymont, DE that includes Dental services. There are eight positions available including but not limited to Front Desk Supervisor (bilingual), Triage Nurse, and Certified Medical Assistant.

For a full list of opportunities, job descriptions and to apply, visit <https://www.hjmc.org/careers.html>.

KUMMBA ACADEMY IS RECRUITING

Kummba Academy of Wilmington, DE is hiring for multiple positions throughout their school. Included in openings are:

- Summer Jobs
- Classroom Teacher - Elementary School
- Special Education Teacher
- Math Teacher - Middle School
- Science Teacher - Middle School
- Instructional Interventionalist - Reading/Math
- Visual Arts Teacher
- School Nurse

For job descriptions and to apply, visit <https://kuumbaacademy.org/careers/job-postings>.



CITY OF NEWARK IS HIRING

City of Newark is hiring for 10 positions in various departments and in various seasons based on opportunity. Opportunities include:

- Seasonal Park Land Steward
- Before & After Care Staff
- Summer Camp Counselor
- Lifeguards (year-round)
- Swim Instructor (year-round)
- Tennis Instructor
- Gymnasium Supervisors
- Soccer Instructor
- Basketball Referees
- Basketball Instructor

Visit <https://newarkde.gov/156/Employment> for job descriptions and to apply.



CASE MANAGER OPPORTUNITIES

State of Delaware has four opportunities to become a Health/Human Services Case Manager II in New Castle County and one in Sussex. Two of the four opportunities are full-time and the other three are Casual Seasonal. Salaries both annual and hourly vary across business areas.

For job description and to apply, visit <https://www.jobapscloud.com/DE/?Keyword=case%20manager&Loc=&DeptNumber=&OcclList=&JobType=&KeywordFullText=0&PGList=>.

STATE OF DELAWARE HAS VACANCIES

The State of Delaware's Project Management and Governance Group has a vacancy for a Strategic Information Systems Project Leader position. To obtain job description, research other openings and to apply, visit <https://statejobs.delaware.gov/>.



INGLESIDE RETIREMENT APARTMENTS HAS OPENINGS

Ingleside Retirement Apartments has positions available in Wilmington. Dining Services are hiring for Cook, Server and Utility Aide, Controller, Resident Assistant/CNA, Licensed Practical Nurse and PRN Home Care.

For more information, job descriptions and to apply, visit <https://www.inglesidehomes.org/careers/>.



JAMESTOWN HOSPITALITY GROUP IS HIRING

Jamestown Hospitality Group consisting of several hospitality locations of various categories are accepting applications. Hospitality locations include Jamestown Catering, Tonic, Juniper, Park Cafe, TBG, Deep Blue and Giordano's. For more information and to apply, visit <https://www.jamestownhg.com/careers/>.

SUNSHINE CLEANING IS RECRUITING

Sunshine Cleaning of Delaware in New Castle, DE is recruiting for a part-time Cleaning Technician. Starting salary is \$25.00 per hour with a flexible schedule. Candidates must have over two years of residential cleaning experience.

For more information and to apply, visit <https://www.sunshinecleaningde.com/>.





DELAWARE CAREGIVERS ARE HIRING

Delaware Caregivers are hiring a Direct Care Worker at their 261 Chapman Road, Newark, DE location. Visit <https://www.paycomonline.net/v4/ats/web.php/jobs?clientkey=4A1F223F37FA75B9455B17C5B258C360> for job description and how to apply.

TAILORED CARE IS HIRING

Tailored Care of 500 West Loockerman Street, Suite 105, Dover, DE is hiring statewide with four openings in New Castle County. The organization provides personalized in-Home health care in Delaware. There are both day and evening shift opportunities.

For job descriptions and to apply, visit <https://tailoredcarellc.com/careers>.

TRINITY HEALTH IS RECRUITING

Trinity Health is recruiting over 30 positions in Wilmington, DE including both direct service to patients as well as support staffing over a variety of shifts and departments. Sign-on bonuses offered for some opportunities. Below are a sample of openings:

- Interventional Radiology Technologist
- Registered Nurse - various departments - both Bilingual English/Spanish & non- bilingual
- CT Scan Tech- Pool/Per Diem
- Pharmacist- Full Time, Day/Evening
- Communications Monitor
- Public Safety Constable
- Sterile Processing Technician

For a full listing of opportunities, job descriptions, and to apply, visit https://jobs.trinity-health.org/midatlantic?utm_source=thma-website&utm_medium=button&utm_campaign=recruitment&utm_content=thma-careers-page.

IMPACT LIFE HAS OPENINGS

IMPACT LIFE has five positions full-time and on-site at various locations statewide. In Kent and Sussex Counties there is an opening for a Peer Support Doula in both areas. New Castle and Statewide openings are below:

- Peer Support Doula - New Castle
- Program Manager - Doula Program - Statewide
- Treatment Navigation Coordinator - Statewide

For job descriptions and to apply, visit <https://impactlifetoday.org/careers/>.



PASS EDUCATORS IS RECRUITING

PASS Educators of 3001 Philadelphia Pike, Wilmington, DE are recruiting for positions such as:

- Substitute Teachers
- PARAs
- Tutors
- Transportation Aides
- Hall Monitors
- Counselors

For full list of openings, job descriptions and to apply, visit <https://passeducators.com/>.

FCS HAS CAREER OPPORTUNITIES

Fairwinds Christian School (FCS) in Bear, DE has an opportunity for a Middle & High School Language Arts Teacher and Substitutes.

For job descriptions and to apply, visit <https://www.fairwindschristianschool.com/employment-opportunities>.

GATEWAY CHARTER SCHOOL IS HIRING

Gateway Charter School located at 2501 Centerville Rd., Wilmington, DE, is hiring for two teaching opportunities. The following positions are available:

- Kindergarten
- Elementary School

For job descriptions and to apply, visit <https://www.applitrack.com/joindelawareschools/onlineapp/default.aspx?AppliTrackPostingSearch=location:%22Gateway+Lab+School%22>.

DCH IS RECRUITING

Delaware Center for Horticulture, located at 1810 N. Dupont Street, Wilmington, DE, is recruiting for a full-time Urban Agriculture Manager. The Urban Agriculture Manager manages, develops, and maintains two urban farms in Wilmington, and teaches farm-based environmental education programs to children and adults. For job description and next steps to apply, visit <https://thedch.org/who-we-are/#job-opportunities>.



DELAWARE INSTITUTE FOR THE ARTS IN EDUCATION HAS AN OPENING

Delaware Institute for the Arts in Education (USSS) of Wilmington, DE has a full-time Marketing Coordinator/Executive Admin. The salary range for this position is \$35,000.00 to \$45,000.00 with an application closing date of June 15, 2025.

For more information and to apply, visit <https://delawarescene.com/jobs/>.



AVELO AIRLINES IS HIRING

Avelo Airlines is hiring a part-time Airport Crewmember at the New Castle Airport located in New Castle, DE. This position has a salary of \$18.00 per hour.

Visit <https://www.aveloair.com/careers>, for more information, remote positions and to apply.

SIGNAL HAS VANCANCIES

Signal of Delaware headquartered at 910 S. Chapel St., Ste. 107, Newark, DE has a Security Officer vacancy in Bear, DE and a Site Security Patrol Officer in Dover, DE.

Visit <https://www.teamsignal.com/careers/>, for job descriptions and apply.



AMERICAN AIRLINES IS HIRING

American Airlines at the Philadelphia International Airport location are hiring three positions Aviation Maintenance Technician, Customer Service Manager and Customer Service Coordinator. For more information and to apply, visit <https://www.jobs.aa.com/>.

EMR IS RECRUITING

EMR Metal Recycling is hiring for their Scale Operator position out of 4113 New Castle Ave., New Castle, DE. The candidate must have the ability to work outdoors in all weather conditions (hot, cold, rain, or snow). Additionally, flexibility to work varying hours, including evenings or weekends as needed.

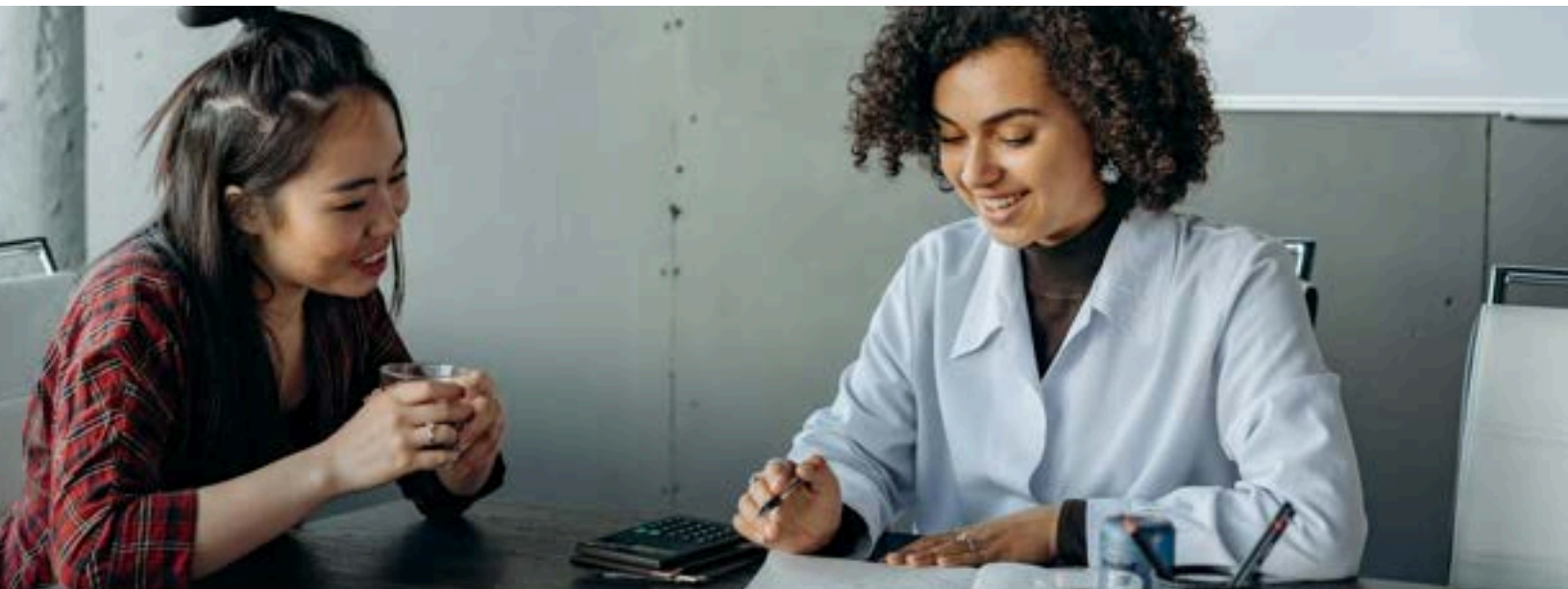
For job description and to apply, visit <https://us.emrgroup.com/work-with-us>.

PEPSICO HAS OPENINGS

Pepsico Beverages North America has one opening in Claymont, DE and three remote positions. These openings include:

- Warehouse Loader - Claymont
- Sales Assoc District Leader
- Supply Chain Capability Senior Manager
- HR Operations Assistant Analyst
- Supply Chain, Associate Principal Engineer - Automation Controls

For job description, and to apply for the Warehouse Loader, visit <https://www.indeed.com/q-General-Labor-I-Wilmington,-DE-jobs.html?vjk=a0372c582c25c986>. For remote openings and other opportunities globally, job descriptions and to apply, visit <https://www.pepsicojobs.com/main>.



WLC HAS OPENINGS

Wilmington Learning Collaborative (WLC) has two openings at 1 South Orange Street, Wilmington, DE location. Career opportunities include:

- Director of Finance & Operations
- Director of Professional Learning

For job descriptions and to apply, visit <https://wlc-de.org/meet-our-team/>.



MID-COUNTY CENTER IS RECRUITING

Mid-County Center of 1 First Regiment Rd., Wilmington, DE is recruiting for a full-time Marketing & Event Coordinator. Work schedule is Monday through Friday 8:00 AM to 3:30 PM. Salary is \$40,000 to \$45,000.

For job description and next steps to apply, visit <https://midcountyseniorcenter.org/marketingeventscordinator/>.

DELMARVA POWER IS HIRING

Delmarva Power has ten positions in the Wilmington, DE and hybrid available. Onsite positions include Sr. Safety Specialist, Journey Line Mechanic and Project Controls Scheduler. Hybrid opportunities include:

- Sr. Communications Specialist - Newark
- Staff Accountant - Newark
- Prin Gas Acquisition Analyst - Wilmington
- Prin Business Program Manager - Multiple locations
- Sr. Engineer - Newark
- Sr. Safety Specialist - Newark
- Senior Financial Analyst - Multiple locations

Visit <https://careers.delmarva.com/delmarva/jobs>, for job descriptions and to apply,

A.S. ACADEMY OF LEARNING OPPORTUNITIES

A.S. Academy of Learning at 891 Pulaski Highway, Bear, DE have opportunities for one-, two- and three-year-old teachers. The school offers an array of benefits including, but not limited to paid time off, tuition assistance, on-the-go breakfast, training and bonuses.

Visit <https://recruitment.asacademyoflearning.com/>, for job descriptions and to apply.

HIGHMARK HEALTH OPTIONS MEMBERS: YOU DESERVE A REWARD.



Healthy Rewards is one of your Highmark Health Options benefits. You or your child can earn rewards when you complete certain healthy activities. We'll tell you what healthy activities you qualify for based on your age, gender, and health conditions. You can earn \$10 to \$25 for each healthy activity, such as an annual wellness visit or a cervical cancer screening. Healthy activities for babies include a lead screening and baby wellness visits.

Take care of your health.

Sign up and see the rewards you can earn.

Scan, go online, or call today.

My.TheraPayRewards.com/HHO

1-866-469-7973 (TTY:711)





THE WILMINGTON HOUSING AUTHORITY IS ONLINE

The Wilmington Housing Authority posts regular announcements and events on our website as well as our Facebook, Instagram and LinkedIn pages. Scan the QR codes to visit our website (<https://whadelaware.org/>) and our social media pages.



WHA WEBSITE



WHA FACEBOOK
PAGE



WHA INSTAGRAM
PAGE



WHA LINKEDIN
PAGE

For general questions, inquiries, and other information for Wilmington Housing Authority's Executive Director, Ray Fitzgerald, please contact Azzana Wing, Confidential Executive Assistant, at AWing@whadelaware.org.