

DECEMBER 2024

ANNOUNCEMENTS

THE WILMINGTON HOUSING AUTHORITY'S MONTHLY UPDATES



WHA MADISON GARDENS TOWNHOMES NO LONGER ACCEPTING APPLICATIONS

Madison Garden Townhomes is a low-income tax credit property owned and operated by Wilmington Housing Authority. Effective September 1, 2024, WHA will no longer be accepting preliminary applications. To check the status or make changes to existing applications or for questions regarding the application process, please contact the Management Office at 302-429-6700.

THE WILMINGTON HOUSING AUTHORITY OFFERS AUTOMATED MESSAGING TO RESIDENTS

The Wilmington Housing Authority now provides automated text messages and phone calls to residents. These automated messages allow residents to receive updates, notices, and other resources in real time.

INGLESIDE HOMES HAS IMMEDIATE OPENINGS

Ingleside Homes Retirement Apartments has immediate openings for studio and 1-bedroom apartments. Residents must be 62 years old or older. Monthly rent is 30% of monthly income and pays for all services at Ingleside, which includes:

- Three (3) meals daily
- Weekly housekeeping and maintenance
- 24-hour Security
- Life Alert Pendant
- All Utilities
- Social & Recreational Programs
- Social Services

For more information, contact Renata Maslowski at (302) 575-0250 ext. 2245.

SUCCESS AT CRESTVIEW

WHA's Resident Services team hosted an incredible Mini Job Fair in the Crestview Apartments community room, connecting WHA residents and community members with career opportunities from nine employers, including:

- Ingleside Homes Inc.
- NERDit Cares
- Food Bank of Delaware
- EDIS
- Delaware Center for Distance Learning
- Delaware Skills Center
- The WRK
- Delaware Department of Labor
- Downtown Visions

With over 60 participants in attendance, the event proved to be a huge success. Highlights included:



8

POTENTIAL HIRES

reported from Downtown Visions



5

INDIVIDUALS REGISTERED

with the Department of Labor



3

PARTICIPANTS ENROLLED

in the Food Bank of Delaware L.O.G.I.C. Training Program



2

WHA RESIDENTS HIRED

with Ingleside Homes

Attendees were able to explore employment opportunities, connect with hiring agencies, and enjoy refreshments provided for job seekers and community partners. The event was expertly managed by Jamila Jones, WHA Resident Services Coordinator, who continues to lead initiatives that support residents in achieving self-sufficiency.

Looking to take the next step in your career? WHA residents can learn more about workforce development and self-sufficiency opportunities by contacting the WHA One-Stop Shop EnVision Center at 302-577-0950. Thank you to our partners and participants for making this event a tremendous success. Together, we're building pathways to brighter futures.



Pictured Above: Nakia Wallace (left) & Jamila Jones (right), WHA Resident Services Coordinators.



Pictured Above: Tracey Jordan, WHA Resident Council Member.



Pictured Above: Downtown Visions Representatives..



Pictured Above: Shanitha Gray, Resident Services Coordinator and Larry Collins, WHA Resident.



Pictured Above: Resident Services Chief, Irmia Williams.



Pictured Above: Employer Representative and Community Member.

SPREADING KINDNESS AT WHA: WORLD KINDNESS DAY CELEBRATION

On Wednesday, November 13, 2024, Wilmington Housing Authority's Low-Income Public Housing (LIPH) Department hosted a special World Kindness Day Celebration to inspire positivity and connection within the community. Residents and staff gathered to enjoy donuts, collect fun stickers and goodies, and learn practical ways to spread kindness. The event highlighted the power of small gestures, encouraging everyone to take simple steps toward creating a more compassionate and uplifting environment.

In addition to the treats, the LIPH team distributed "Tip Cards" featuring ideas on how to practice kindness daily, from helping a neighbor to sharing a smile. This thoughtful initiative served as a reminder that even small acts of kindness can create a ripple effect, building stronger relationships and a greater sense of community. WHA is proud to foster events that bring residents together and promote values that make a lasting impact.



Pictured Above: Lekeisha Watson, Annette Brown and Sandi Rosmini (Left to Right), LIPH Management Team Members.



Pictured Above: Fun stickers and goodies

THE PREMIER RAPID HOUSING PLACEMENT TEAM SUCCESSFULLY FINDS HOMES FOR FAMILIES



Pictured Above: Premier Rapid Housing Placement Team Supervisor, Wayne Jefferson and two team members, Jennifer Harris and Delilah Espinosa.

In November 2024, our Premier Rapid Housing Placement Team successfully housed 19 families in safe, clean, and decent homes, despite the scarcity of affordable rental housing. Congratulations to Supervisor Wayne Jefferson and two team members Jennifer Harris and Delilah Espinosa with the highest placements for the month. November were Wilmington Housing Authority (WHA) Housing Choice Vouchers, including assisting two families transitioning from WHA Riverside community, also one YouthBuild Participant.

The Premier Rapid Housing Placement Team is dedicated to assisting individuals and families in Wilmington with housing placement. They offer services such as case management, barrier assistance, and rental navigation.

By partnering with landlords, the team helps clients find suitable affordable housing options. These collaborations benefit landlords by aiding in tenant recruitment, ensuring property inspections meet safety standards, and facilitating secure monthly rental payments through a designated portal. To become a client or landlord partner, please contact 302-579-2925.



WILMINGTON HOUSING AUTHORITY YOUTHBUILD EXPLORES WORKFORCE DEVELOPMENT PARTNERSHIPS WITH ECA

On Monday, December 2, 2024, the Wilmington Housing Authority's YouthBuild Leadership Team had the opportunity to tour the Energy Coordinating Agency (ECA) in Philadelphia, PA. ECA, a prominent non-profit organization, provides essential energy conservation, education, and home repair services across Pennsylvania and Delaware. The visit focused on exploring how ECA's impactful initiatives align with YouthBuild's mission to empower participants through education, training, and workforce development.

During the tour, the YouthBuild Leadership Team engaged in meaningful discussions about potential partnerships that could offer expanded opportunities for future cohorts. These collaborations aim to enhance skilled labor employment training, particularly in energy-related fields. The team left inspired by ECA's innovative programs and the possibility of forging educational pathways that would equip participants with the tools needed to excel in sustainable careers. This visit marks a promising step in building partnerships that benefit YouthBuild participants and strengthen community impact.



Pictured Above: YouthBuild Leadership Team touring training rooms.



Pictured Above: Student Training Station.



Pictured Above: Student Training Station.



Pictured Above: Student Training Station.

MCMULLEN SQUARE NEW CONSTRUCTION TOWNHOMES AVAILABLE FOR PURCHASE FOR DELAWARE HOMEBUYERS

The Delaware Affordable Housing Group (DAHG), a valued non-profit partner of the Wilmington Housing Authority, proudly introduces McMullen Square Townhomes, one of Wilmington's premier new construction communities. McMullen Square, located in Northeast neighborhood of Wilmington, DE, offers spacious, three-story townhomes with three bedrooms and 2.5 bathrooms. These newly constructed townhomes boast modern style and coveted amenities, including multi-level living, eat-in kitchens, rear decks, and an oversized garage. Close to schools, and minutes from Wilmington's Train Station, I-95 and I-495, McMullen Square, provides unparalleled convenience. Phase One of McMullen Square will be delivered by the first quarter of 2025. Depending on the lot, the buyers will have the option of a one or two-car garage, allowing for interior customization to suit individual preferences. McMullen Square townhomes come in two primary layouts ranging from 1,767 to 1,982 square feet.

For more information on available properties, contact Gary Williams at 302-368-1621 or Co-Listing Agent, Simone J. Braxton 302-887-0772, BHHS Fox & Roach-Christiana.



Pictured Above: McMullen Square Frontage.

ONE-STOP SHOP ENVISION CENTER HOMEBUYER'S WORKSHOPS

The WHA One Stop Shop's (OSS) EnVision Center is hosting a Homebuyer's Workshop on January 9, and February 13, 2025, at 2:00 PM. The Homebuyer's Workshop is offered virtually every second Thursday of the month through Microsoft Teams.

For more information or to register, call the WHA OSS at 302-577-0950.



LUTHER TOWERS HAS OPENINGS

Luther Towers of Wilmington has immediate openings for individuals 62 years old or older in their subsidized housing community of studio and 1-bedroom apartments. Experience the perfect blend of comfort and community. These newly renovated spacious apartments feature modern amenities and enjoyable on-site services such as a fitness center, library, computer lab, laundry facility, and inviting community spaces. With easy access to local shops, dining, and public transportation, everything needed is just moments away.



For more information, email luthertowers@pkmanagement.com or call 302-652-3737. Visit <http://www.luthertowers.com/independent-living-apartments/> for more details and to apply.



ONE-STOP SHOP ENVISION CENTER WORKSHOPS

The WHA One Stop Shop's (OSS) Envision Center's overall mission is to serve as the catalyst for change for the achievement of "self-sufficiency" for all WHA residents as well as individuals living in the City of Wilmington. Below are the dates for the upcoming workshops.

DATE	TIME	LOCATION	CONTACT PERSON	PRESENTER
1/3/2025	1:30 PM	BAYNARD APARTMENTS 309 W. 18th Street Wilmington, DE 19802	Doug Hamilton	Behavioral Health Consortium
1/3/2025	2:00 PM	BAYNARD APARTMENTS 309 W. 18th Street Wilmington, DE 19802	D. DuPont & K. Wilkins	Rose Hill Community Center & LIHEAP
1/3/2025	2:30 PM	BAYNARD APARTMENTS 309 W. 18th Street Wilmington, DE 19802	Rhonda Mitchell	AmeriHealth Caritas VIP Care
1/10/2025	1:30 PM	CRESTVIEW APARTMENTS 700 N. Market Street Wilmington, DE 19802	Doug Hamilton	Behavioral Health Consortium
1/10/2025	2:30 PM	CRESTVIEW APARTMENTS 700 N. Market Street Wilmington, DE 19802	Rhonda Mitchell	AmeriHealth Caritas VIP Care
1/17/2025	1:30 PM	PARK VIEW APARTMENTS 1800 N. Broom Street Wilmington, DE 19802	Doug Hamilton	Behavioral Health Consortium

RESIDENT SERVICES MONTHLY WORKSHOPS

One-Stop Shop EnVision Center November 2024 Workshops provided WHA Residents with a variety of resources to assist their path of self-sufficiency. Workshops included health care assistance and options, alternate living opportunities and help with entertainment addiction. Additionally, residents had an opportunity to win prizes, enjoy snacks, and socialize with neighbors in their buildings.

For more information on WHA One-Stop Shop EnVision Center workshops or to discuss partnerships for future workshops, call 302-577-0950 or email residentservices@whadelaware.org.



Pictured Above: Verna Owens (left) & Willie Snow (right), WHA Residents.



LIVING FREE AT THE DREAM CENTER

Living Free is a supportive Christ-centered program offered at Delaware Dream Center in Newark. There are three courses beginning on January 13, 2025, from 7:00 PM to 8:30 PM offering help to anyone struggling with life-controlling problems. Problems such as workaholicism, sexual addiction, gambling, drug addiction and more.

The three courses offered are:

- Stepping into Freedom - 12 weeks
- Walking in Freedom - 12 weeks
- Hope After Trauma - 4 weeks

For more information and registration, visit <https://www.elixiogiving.com/App/Form/10f71441-28e0-4ee3-93c0-638dca077693>.

FREE MENTAL HEALTH EMERGENCY SERVICES AVAILABLE FOR CHILDREN & YOUTH

The Delaware Guidance Services for Children & Youth, Inc. in partnership with the Department of Services for Children, Youth, & Their Families offers mental health emergency services to children between the ages of 3 and 17 years old in the state of Delaware. Their skilled Crisis Intervention Clinicians come to wherever you are, whenever you need it, to provide crisis support. Services are available 24 hours a day/365 day a year.

Call 1-800-969-HELP (4357) for immediate assistance. Visit <https://www.delawareguidance.org/> for more information.



RE-ENTRY COUNSELING AND SUPPORTIVE SERVICES

TechForce Counseling & Community Services at 2417 Lancaster Avenue, Suite 111 in Wilmington, DE provide counseling and supportive services to individuals transitioning from incarceration to the community. Comprehensive mental health counseling, job readiness programs, financial literacy education, and vocational training initiatives are provided to help clients with a successful transition. Services are provided both in person and virtually.

For more information, visit https://techforcecounseling.org/index.html#.



DELAWARE CRISIS CALL LINES

If you are experiencing a medical emergency, have taken an overdose, or have harmed yourself in any way, **DIAL 9-1-1 IMMEDIATELY.**

If you need to speak to someone in reference to:

- Mental Health
- Domestic Violence
- Sexual Violence
- Crimes
- LGBTQ+
- HIV & AIDS

Visit <https://www.mhainde.org/resources-main-page/counseling-services/>, to locate crisis call lines and services statewide or call 302-654-6833.

CORAS WELLNESS & BEHAVIORAL PROGRAMS

CORAS is a multifaceted non-profit organization serving people with psychiatric and intellectual disabilities and/or substance use disorders, and families in crisis. No one will be denied service due to unable to pay. Outpatient and Residential Treatment programs offered are Medication-Assisted, New Hope Men's Residential, Family and Women's Residential.

Services offered:

- Outpatient Office Based Therapy
- Mobile Outpatient Family Based Therapy
- Intensive Family-Based Mental Health Services
- Therapeutic Support for Families
- In-person and virtual appointments available
- Extended Evening Dosing Hours at Newark

For more information, visit <https://coraswellness.org/> or call Wellness & Recovery HelpLine at 1-833-886-2277.

DELAWARE GUIDANCE SERVICES FOR CHILDREN & YOUTH, INC.

Delaware Guidance Services for Children & Youth, Inc. is Delaware's largest provider of non-residential mental health services for children and families. Their trained clinicians are ready to help children and youth who may be experiencing anxiety, depression, stress, trauma and PTSD, and other behavioral or mental health concerns. Medicaid and all major insurance providers are accepted. For more information visit <https://www.delawareguidance.org/> or call one of the agency locations.

WILMINGTON
(302) 652-3948

NEWARK
(302) 455-9333

DOVER
(302) 678-3020

LEWES
(302) 645-5338

SEAFORD
(302) 262-3505



JFS YOUTH ANXIETY GROUP

Jewish Family Services (JFS) of Delaware is hosting a Youth Anxiety Group starting Tuesday, January 14, 2025, at their Wilmington, DE location. This group is for children seven to 11 years of age from 5:00 PM to 6:30 PM for ten weeks.

Visit <https://www.jfsdelaware.org/addressing-the-rise-in-youth-anxiety/>, for more information and <https://www.jfsdelaware.org/youth-anxiety-programs-form/> to enroll.

HEALTHY WOMEN, HEALTHY BABIES

Healthy Women, Healthy Babies (HWHB) is a program for women who are Delaware residents. It offers services to women who are pregnant or planning a pregnancy, or who just want to live a healthier life. These include personal health and wellness, nutrition, family planning, mental health, prenatal care and more. The HWHB Program services are facilitated through health care organizations that contract with the Division of Public Health to conduct program outreach, enrollment, and deliver service bundles.

For more information and full program eligibility, visit <https://dethrives.com/programs/healthy-women-healthy-babies#what-is-healthy-women-healthy-babies>.





FAMILY SUPPORTIVE SERVICES

Maternity Care Coalition (MCC) provide services to pregnant people and parenting families with children ages 0-3. Services offered include:

- Home Visiting
- Child Care
- Community and Parenting Education
- Community Doula and Lactation
- Behavioral Health
- Community Reproductive Health

Visit <https://maternitycarecoalition.org/services> for more information.



HOME VISITING HEALTH PROGRAMS

Home Visiting Program serves families expecting a baby or have a young child at home up to age five years. A Family Support Specialist will get to know the patients and offer tailored support services to meet the family's needs. They can offer ways to help create a safe and healthy environment to thrive in, helping parents understand their child's development.

Delaware has four home visiting programs:

- Nurse Family Partnership
- Healthy Families Delaware
- Parents as Teachers
- Early Head Start

Visit <https://dethrives.com/programs/home-visiting> for full details and enroll.

NEMOURS SENIORCARE

Nemours SeniorCare program serves low-income Delaware residents aged 65 and older by helping them secure access to dental, vision and hearing services. There is typically no cost or only a small co-pay for services.

Visit <https://seniorcarenemours.org/home/services.html> for more information on this program and to enroll.

EYEGASSES REFERRAL PROGRAM

OneSight has an Eyeglass Referral Program that provides vouchers to individuals and families who are unable to afford eyewear. This program provides eyeglass vouchers to access services. Individuals must receive a referral to OneSight from a non-profit organization (such as a school, church, Lions Club, Prevent Blindness, Red Cross, or United Way) to apply. For more information and full process, call 1-888-935-4589 Monday through Friday 8:00 AM to 5:00 PM.



BREAST CANCER PATIENT FINANCIAL ASSISTANCE

Pink Fund provides financial support to help meet basic needs of breast cancer patients in active treatment that have lost household working income. It is a 90-day grant program to meet their critical expenses for housing, transportation, utilities, and insurance.

For more information and to apply, visit <https://pinkfund.org/about/>.

SENIOR COUNTY & SCHOOL TAX CREDITS

For seniors (65 years old before the beginning of the tax year on July 1) and an owner or part owner of the property who meet requirements may qualify for a school tax credit up to \$500.00. For more information and to apply, call Earned Income Tax Office at 302-576-2418 or email your CityTaxQuestions@WilmingtonDE.gov.

YOUTH WELLNESS CLASSES

I AM ART N MOTION in partnership with Wilmington Alliance hosts a monthly expressive arts wellness class at The Art O Mat in Wilmington, DE. Classes are hosted every second Saturday from 10:00 AM to 12:00 PM through April 12, 2025, for youth 10 years of age and older.

The goal is to provide expressive arts wellness practice to maximize creative expression, problem-solve, and teach people how to connect. Dance and therapeutic tools are used to advance social and emotional learning which ultimately improves well-being.

For more information and to register, visit <https://form.jotform.com/243024329814150>.

HIGHMARK REWARDS PROGRAM



You deserve a reward.

Healthy Rewards is one of your Highmark Health Options benefits. You or your child can earn rewards when you complete certain healthy activities.



To sign up and see the rewards you can earn, go online or call: my.therapayrewards.com/hho
1-866-469-7973



Scan to get started

Reward activities can include:		
\$15 Annual well-child visit (ages 3-19)	\$10 per visit/up to 8 visits Well-baby visit series (through age 30 months)	\$10 Lead screening (up to age 24 months)
\$15 A1c test for people with diabetes	\$15 Doctor visit after giving birth (up to 84 days after delivery)	\$25 Colorectal cancer screening
\$25 Cervical cancer screening	\$15 per fill/up to 6 fills Asthma controller medicine (age 18 and younger)	\$15 Reflex exams for people with diabetes
\$15 Annual wellness visit (age 20 and older)	\$25 Breast cancer screening	\$15 Doctor visit after leaving the hospital

Powered by **TheraPay**

Highmark Health Options (HMO) is an independent licensee of the Blue Cross Blue Shield Association, an association of independent Blue Cross Blue Shield Plans. HMO complies with applicable federal and state laws and does not discriminate on the basis of race, color, national origin, age, disability, or sex.



MILITARY CRITICAL FINANCIAL ASSISTANCE

Operation Homefront assists military families during difficult financial times by providing food assistance, auto and home repair, vision care, travel and transportation, moving assistance and more. For more information and to apply, visit <https://operationhomefront.org/our-programs/> or call 1-877-264-3968.

ASSISTIVE TECHNOLOGY RESOURCES

Easterseals Delaware and Maryland's Eastern Shore offers What's thAT? Assistive Technology Series virtually for 15 minutes at 11:30 AM each third Thursday of the month. These public sessions are aimed at caregivers and require no registration before attending. Below are the topics over the next three months:

- January 16, 2025 - Spinal Cord Injury
- February 20, 2025 - Smart Home
- March 20, 2025 - Autism

Visit <https://www.easterseals.com/de/programs-and-services/adult-services/assistive-technology-services.html>, for more information.

Use this link to attend: <https://zoom.us/j/97297629504?pwd=cU84bjBDZjc4Zk54RkFLczAvT1E3QT09>.



SENIOR PROPERTY TAX ASSISTANCE PROGRAM

The Wilmington Senior Property Tax Assistance Program assists seniors with paid off mortgages and facing foreclosure due to delinquent City property taxes or sewer/water bills. City of Wilmington, Delaware State Housing Authority (DSHA), and United Way of Delaware have partnered to assist qualified homeowners in Wilmington who are 62 years of age or older and facing imminent foreclosure. The maximum grant amount the tax assistance program is \$3,000.00.

Visit <https://www.destatehousing.com/maintain/foreclosure-prevention/>, for an application and complete information about the program. To apply, contact DSHA at 302-577-5001 to set up an appointment.



CATHOLIC CHARITIES FOOD COOPERATIVE

Catholic Charities Food Cooperative program is located at 300 Bayard Avenue, in Wilmington. The Cooperative helps families and individuals stretch their limited incomes by providing a supplemental bag of groceries monthly. This program provides nutritious, meal-ready products Monday through Friday from 8:00 AM to 5:00 PM. For more information, call 302-654-1184.

LCS FOOD PANTRY AT ST. STEPHEN'S

St. Stephen's Food Pantry is located at 1301 N. Broom Street, in Wilmington, DE. Clients must have photo identification and proof of Delaware residency for the head of the household and IDs for other household members. For assistance, registration is required and can be completed during pantry hours. The pantry is open Monday, Tuesday, Thursday, and Friday from 9:00 AM to 12:00 PM and Wednesday from 5:00 PM to 7:00 PM. For more information, call 302-654-1184.

CIRCLE OF LOVE FOOD MINISTRY

Hillcrest Bellefonte United Methodist Church (HBUMC) food pantry offers food items to households experiencing food insecurity in Wilmington and surrounding areas. The pantry is located at 400 Hillcrest Avenue, in Wilmington, DE and open Thursdays, 11:00 AM to 1:00 PM. For more information, call 302-764-3145.



ALABASTER BOX FOOD PANTRY

The Glorious Church at 2205 Lancaster Avenue, in Wilmington, DE offers a food and clothing closet weekly. The closet is open 12:00 PM to 2:00 PM on Saturdays. Call 302-723-2274, for more information.

LACC FOOD PANTRY

Latin American Community Center (LACC) offers a food pantry to low-income households at their location at 403 North Van Buren, in Wilmington, DE. Hours of operation are Monday through Friday, 9:00 AM to 5:00 PM. Call 302-655-7338, for more information.

UNITY CHURCH ELCA FOOD PANTRY

The Glorious Church at 2101 Lancaster Avenue, in Wilmington, DE offers a food pantry three times per week. The pantry is open Tuesday and Wednesday, 9:30 AM to 10:45 AM and Thursday, 5:00 PM - 6:30 PM. Call 302-658-5288, for more information.



SENIOR HEALTHY PROGRAM

Los Abuelos Program food assistance program engages seniors (ages 60 and up) in healthy living through activities and education through the Latin American Community Center (LACC). Food distribution participants must be New Castle County residents and meet income requirements. This program provides:

- Educational sessions
- Exercise classes
- Lectures
- Recreational activities
- Food distribution
- Birthday and holiday celebrations

For full details and enroll, call 302-655-7338 ext. 7733 or email baldegon@thelatincenter.org.

NCC PROPERTY TAX & SEWER RATE REDUCTIONS

New Castle County offers both tax and sewer rate reductions to those that qualify. Up to \$32,000.00 in property tax exemptions are available to eligible residents aged 65 or older. For more information, call 302-395-5520 or visit <https://www.newcastlede.gov/182/Tax-Exemptions>.

Eligible residents aged 65 or older may receive up to 50% off their next sewer bill. For more information, call 302-395-5520.



RECOVERY HOUSING ASSISTANCE

atTAcK addiction provides three houses: two for men and one for women, with 25 beds for those in recovery. Houses are supervised by a house manager and our residents receive case management support. This housing is designed to meet the needs of the individual beginning with a period that is free to the client until such time as work is deemed appropriate.

For more information, Leslie Palladino at 302-593-7335 or leslie@impactlifetoday.org.

UNDERSTANDING ALZHEIMER'S AND DEMENTIA

Domestic Violence Coordinating Council (DVCC) is offering an Elder Abuse Webinar Series with Understanding Alzheimer's and Dementia as their next topic. This webinar will be hosted on Wednesday, January 29, 2025, from 2:00 PM to 3:30 PM at no cost. This course covers basic information on the difference between Alzheimer's and dementia, stages, risk factors, research, and FDA-approved treatments.

To register, visit https://us02web.zoom.us/webinar/register/WN_Sl1fp-YSQAOkbAsuchbePw#/registration. For more information on DVCC training and outreach, visit <https://dvcc.delaware.gov/training/>.

SENIOR DAYS AT MSK

My Sister's Keeper (MSK) has Senior Days on Tuesdays and Wednesdays from 10:00 AM to 2:00 PM with free membership. MSK is located at 1009 Sycamore Street, in Wilmington. Activities offered include Mindfulness, Yoga, Stretching, Fitness Zone and more. Cafe on site is also available. Call 302-416-4017 for more information.



HYGIENE HUB

Nemours Children's Health Hygiene Hub for youth ages nine to 18 years of age, both male and female, is located at MSK Community Center of 1009 Sycamore Street, in Wilmington. All items provided to youth are at no cost. For more information, call 302-416-4017.



NCC LEAD & HEALTHY HOMES PROGRAMS

New Castle County (NCC) offers both the Lead and Healthy Homes Programs in all NCC zip codes. Households with children under the age of six, with pregnant women, or those built before 1978 may be eligible for the Lead Program at no cost.

For the Healthy Homes Program, eligible households may be those with seniors over 62 years of age, persons with disabilities or children under 18 years of age. A Healthy Home Assessment is performed, to identify hazards such as radon, carbon monoxide, lead hazard, damp & mold, leaking roofs, excess heat and/or cold, falls in bathroom, electrical hazards, structural collapse, lighting issues, pests & food safety, or unsafe windows and doors. If any health hazards are found during the assessment, we may be able to address the problem for free.

For more information, visit <https://www.newcastlede.gov/1982/Lead-and-Healthy-Home-Programs> or call 302-395-5318 or email nolead@newcastle.gov. To apply on-line, visit <https://www.newcastlede.gov/FormCenter/Lead-Program-14/Lead-Program-Information-and-Application-79>.

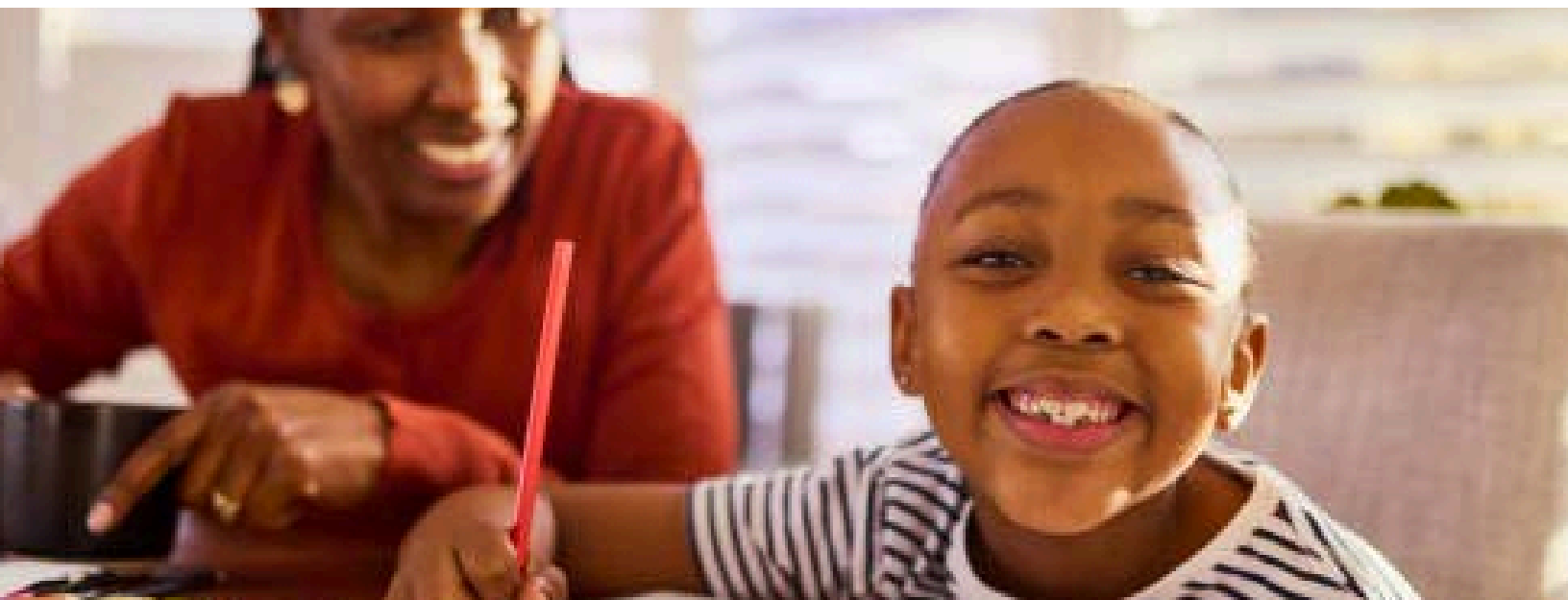


EMPOWERING SINGLE MOMS

Empowering Single Moms (ESM), Inc is headquartered in Claymont, DE and assists single mothers receiving federal assistance in Newark, DE and Wilmington, DE as well as Philadelphia, PA with the following programs:

- **Solace Sunday** - bi-monthly, virtual events provide space for Single Moms to talk, learn, vent and connect.
- **Individual EmPOWERment Planning** - ESM collaborates with our Single Moms to create a custom EmPOWERment Plan to help them set and reach goals.
- **Career Closet** - Our Single Moms will be able to select items from a collection of professional clothing.

Visit <https://empoweringsinglemomsinc.org/contact>, for full details of programs.



OVA AFTERSCHOOL CLUB

One Village Alliance (OVA) offers an afterschool program at 31 W. 31st Street, in Wilmington, DE on Mondays from 3:00 PM to 6:00 PM for 7 to 17-year-olds. Students will have access to a pizza party, game room, movie room, homework help, mentorship and more.

Visit <https://www.iamthevillage.org/about-3-3>, for more information and registration.

KNOLLWOOD COMMUNITY CENTER

Knollwood Community Center, located at 4 Colby Ave, Claymont, DE has three programming options for youth and families:

1. **Gloves Against Drugs** - 2nd and 4th Tuesday every month at 5:15 PM for boys and girls ages 10 and up.
2. **Family Discovery Night** - 3rd Wednesday of every month at 6:00 PM for grades 3rd to 8th preferred but whole family is welcome to join. Dinner, Books and Art.
3. **Youth Bible Study** - Thursdays, 4:00 PM to 5:00 PM for grades Kindergarten to 3rd, 5:00 PM to 6:00 PM for grades 4th to 6th, and 6:00 PM to 7:00 PM for grades 7th to 10th.

For more information, visit <https://knollwoodcommunitycenter.com/events/> or call 302-793-1627.

TIME TREKKERS TROUPE

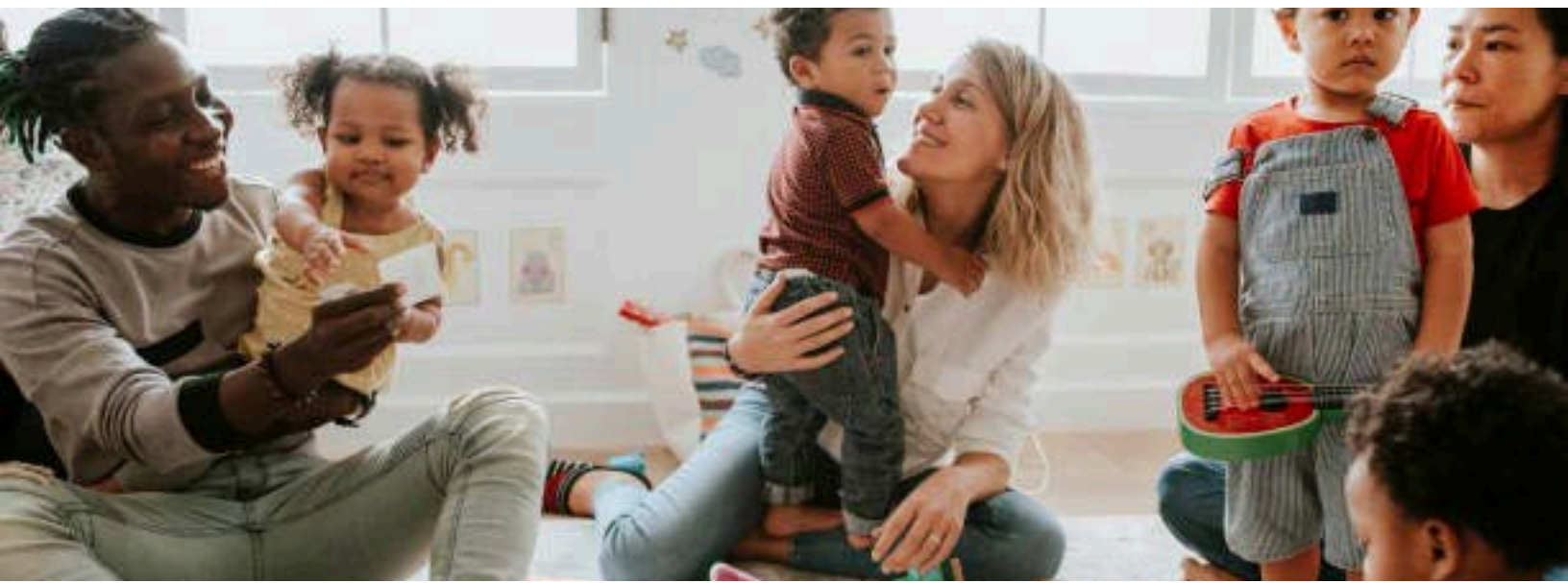
Every third Tuesday of the month at 1:00 PM a history club for eight to 12-year-old homeschool children is hosted at the Elsmere Library. A different time period is covered each month, not in chronological order through crafts, resources and/or activities. Attendees are encouraged to stay after the meeting to mingle and learn about other library activities. Elsmere Library is located at 30 Spruce Avenue, in Wilmington, DE. For more information on library offerings and hours, visit <https://www.newcastlede.gov/327/Elsmere-Library>.

4-H AFTERSCHOOL PROGRAMMING

Delaware 4-H offers afterschool programs at schools and community centers in each of Delaware's three counties. New Castle County has two locations at Kirk Middle School and Knollwood Community Center.

For more information and to enroll, visit <https://www.udel.edu/academics/colleges/canr/cooperative-extension/personal-economic-development/programs/>. Contact New Castle County Afterschool Director, D'Aesha Fletcher dhami@udel.edu 302-831-4977.





NEW DIRECTION EARLY HEAD START

New Direction Early Head Start (NDEHS) has both home-based and center-based programming in three New Castle County to families that meet the income and eligibility guidelines. NDEHS serves children from birth to age three. Both program options offer family education and support services, health and nutrition education and referral services. Purchase of Care is accepted by NDEHS.

For more information and registration, visit <https://www.ndehs.udel.edu/>.

KINDERGARTEN REGISTRATION

Kindergarten for the 2025 - 2026 school year is being accepted for children that will be five years old by August 31, 2025. For families that would like guidance, Kindergarten Registration Information Packets are available at your local library.

For more information, visit <https://www.delawarereadinessteams.com/current-initiatives/kindergarten-month/>.



COLLEGE SCHOLARSHIP PROGRAM

In 2025, PHADA will award three scholarships to high school seniors residing in public and assisted housing. One scholarship is for \$10,000.00 and the other two are \$5,000.00 each. PHADA Scholarship is open with a deadline of January 24, 2025, close of business day.

For scholarship and application details, visit <https://www.phada.org/Conferences-Education/PHADA-Scholarship-Program>.

DELAWARE SCHOLARSHIP COMPENDIUM

Delaware Higher Education Office of the Department of Education has made available their Delaware Scholarship Compendium 2024-2025. This on-line resource (print option also available) is for Delaware students and residents looking for scholarships and programs to help fund their post-secondary education (such as college, trade/technical schools and certificate programs).

For more information and to begin searching, visit <https://scholarships.delawarestudentsuccess.org/>.

SKATE CLASSES

One Village Alliance offers skate classes every Thursday for beginners and advanced skaters. From 6:00 PM to 7:30 PM all are welcome and 7:30 PM to 8:30 PM are for adults only. Every second Sunday adult lessons are also offered from 4:00 PM to 6:00 PM. Classes take place at their Freedom Center located at 31 W. 31st Street, in Wilmington.

Visit <https://www.eventbrite.com/e/roller-skating-class-tickets-809311942807?aff=ebdsoporgprofile> for enrollment at no cost.



DBCC SURVIVOR COOKBOOK CLUB

Delaware Breast Cancer Coalition (DBCC) offers Yes2Health Health Ed at no cost. Participants meet weekly on Zoom for education on fitness, health, and wellness to stay on a healthy track and are encouraged to walk for at least 30 minutes per week.

Cookbook Club for breast cancer survivors is being offered once a month in January, February and March 2025 from 5:00 PM to 6:30 PM.

For more information and to register, visit <https://debreastcancer.org/programs/yes2health/>.



HEALTH & WELLNESS AMBASSADORS

University of Delaware's Cooperative Extension's 4-H offers local youth the opportunity to develop healthier lifestyles and stay active. List of programs offerings:

- Health & Wellness Ambassadors
- Healthy vegetables and fruits we should all eat
- Up for the Challenge
- Soccer for success
- Prevention and Lifeskills Education
- Get Experience in Mindfulness
- Fitness and Nutrition
- Mental Wellness and Prevention (ROTA)

For more information and how to get involved, visit <https://www.udel.edu/canr/cooperative-extension/personal-economic-development/curriculum-projects/healthy-living/>.

FUTURE WEALTH BUILDERS BOOTCAMP

Every Man Counts (EMC) is offering Future Wealth Builders Bootcamp for boys and girls from 15 to 21 affected by incarceration with one or more parents. The course focuses on money management, understanding the stock market, E-Commerce, Banking Investments and more.

To register and for more information, call 302-722-5939 and visit <https://everymancounts.org/#contact>.



A TREE FOR EVERY DELAWAREAN

Tree for Every Delawarean Initiative (TEDi) is a partnership that includes the DNREC Division of Climate, Coastal and Energy, the Urban and Community Forestry (UFC) programs in the Department of Agriculture’s Delaware Forest Service and other stakeholders. Trees improve air and water quality, preserve soil, and support wildlife, playing a role in climate change. You can help by planting trees at your home or business and add them to the TEDi Tracker.

Visit <https://dnrec.delaware.gov/tedi/>, for more information and funding opportunities for residents and businesses.

4-H NEEDS VOLUNTEERS

University of Delaware Cooperative Extension 4-H program needs volunteers in various capacities. Volunteer opportunities include:

- **Organizational Leader:** A volunteer who manages and organizes a 4-H club.
- **Club Project Leader:** A volunteer in a 4-H club who leads one or more project groups.
- **Club Activity Leader:** A volunteer who takes responsibility for certain activities done by a 4-H club during the year.
- **County Club Leader:** A volunteer that would do training and activities at the County level.
- **Special Interest (SPIN) Leader:** A volunteer who encourages youth, including underserved families, to investigate topics that may not be typical 4-H projects.

For more information and to register, visit <https://www.udel.edu/academics/colleges/canr/cooperativve-extension/personal-economic-development/volunteer-with-4h/>.

VOLUNTEER SERVICE AWARDS

2025 Governor’s Volunteer Service Awards Nominations are open. These service award nominations are open for both youth and adults and due by January 19, 2025.

Visit <https://volunteer.delaware.gov/>, for more information and to submit nominations.



MSK ARE SEEKING VOLUNTEERS

I Am My Sister’s Keeper (MSK) Community Center are seeking volunteers at their 1009 Sycamore Street location in Wilmington, DE. For more information on MSK programming and to fill out a volunteer form, visit <https://www.iammsk.org/volunteers>.



COMMUNICATIONS & ENGAGEMENT INTERN/FELLOW

Delaware Center for Justice (DCJ) is seeking a Communications & Engagement Intern/Fellow at their location of 100 W. 10th Street, Suite 905, in Wilmington, DE. Below is a sample of some tasks that could be performed during the internship:

- Performing administrative tasks for the office
- Providing administrative assistance & support to front desk
- Assisting the organization with managing inmate correspondence
- Attending meetings with program staff

For more information and to apply, complete the form located at <https://dcjustice.org/digital-career-fair/> and send it, along with a resume, to apply@dcjustice.org.

NAMI INTERNSHIP/VOLUNTEER OPPORTUNITIES

Interns and volunteers with NAMI Delaware's Education and Support Program, educate the local community about mental health and suicide prevention. As many of interns are undergraduate students, there is a focus on youth/young adult engagement - however this can be adjusted if there is a particular community or topic for outreach that is of interest.

Visit <https://www.namidelaware.org/work-or-volunteer/>, for more information and to apply.

CONSTRUCTION & SKILLED TRADE INTERNSHIP

FAME, Inc. Path to Success Construction and Skilled Trade Internship Program has partnered with Delmarva Power. This is a 10-month program for high school seniors with a 2.5 grade point average followed by a 6-week internship.

The class will be hosted in-person on Saturdays from 9:00 AM to 12:00 PM twice a month.

For more information and to register, email at acarter@fameinc.org.

HOSPITALITY MANAGEMENT DEVELOPMENT PROGRAM

Great Wolf Lodge has a national accelerated Management Development Program (MDP). MDP Associates participate in the program for a two-year rotation broken into four sections where they will work in two to three different locations.

Two of the required qualifications include obtaining a bachelor's degree from an accredited university between December 2024 to May 2025 and available to relocate and begin program by June 10, 2025.

Visit <https://www.greatwolf.com/jobs> for details and to apply.



CELEBRATE US WORKFORCE TRAINING

Celebrate Us Workforce Training is a high accountability jobs program. Celebrate Us Workforce Training requires 90% attendance, 90% punctuality, 100% completion of all assignments, and 100% completion all training directives. Trainings offered:

- **Healthcare**
 - Phlebotomy, CNA/GNA, CMT (certified medication technician)
- **Manufacturing**
 - Forklift transportation, logistics, warehouse management/distribution
- **CDL A&B IT**
 - Comptia A+, network +, security +, web application development, web development (fundamentals)
- **Hospitality**
 - CGSP (certified guest services professional) CLSOP (certified lodging security officer professional)

For more information and to register, visit <https://celebrateusworkforcetraining.com/>.

COMMUNITY HEALTH WORKER TRAINING

The Washington State Department of Health offers Community Health Worker Training Program to strengthen the skills and knowledge of community health workers with a focus on documentation, advocacy, healing justice, and social determinants of health.

The Core Competence series is a foundational training for all community health workers and is offered in a remote format. The course is 10-weeks with two live webinars.



For questions, email chwts@doh.wa.gov. For more information and to register, visit <https://hcwcommunityhealthworker.org/>.

CAREER TEAM

Career Team offers GED/High School diploma assistance and career readiness training statewide for young adults 16 to 24 years old. Their Wilmington, DE location is 964 Justison Street where they assist in training, education and career coaching. Additionally, paid work experience opportunities are available.

Email teamdelaware@careerteam.com or call 302-990-5369 ext. 303 for more information and to enroll.

WENH CAREER TRAINING

West End Neighborhood House (WENH), located at 710 N. Lincoln Street, in Wilmington, DE offers full-service training and academic advisement. Services include paid internships, adult literacy and GED preparation, case management, support services certifications and more, at no cost to the student.

Certifications offered:

- Warehouse & Logistics
- Forklift Operator
- CPR/First Aid/AED
- Microsoft Office/Google+
- ServSafe/AHLEI
- Customer Service
- Environmental

Visit <https://westendnh.org/programs/> or call 302-658-4171, for more information.



DFS WILDFIRE TRAINING

Delaware Forest Service (DFS) is offering a job opportunity for the Summer 2025 fire season, individuals can join the Delaware Wildland Fire crew and travel on fire assignments nationwide. Individuals will need to attend the annual DFS initial wildland fire training, offered in 2025 at no cost to participants. No prior experience in firefighting is necessary, trainees must be over 18 years old and physically fit. Crew members need to be able to travel for at least two weeks, typically in the summer.

Attendees must register by January 13, 2025, using the online registration form. Complete details for the course and registration are available at <https://agriculture.delaware.gov/forest-service/wildland-crew/>.



FOOD SERVICE & WAREHOUSING/LOGISTICS TRAINING

Food Bank of Delaware offers free accelerated job training programs in food service and warehousing/logistics. Both training opportunities are 14-weeks and offered on-site in both Newark, DE and Milford, DE which includes hands on, supportive services, job matching and paid work experience. Both options begin in January 2025.

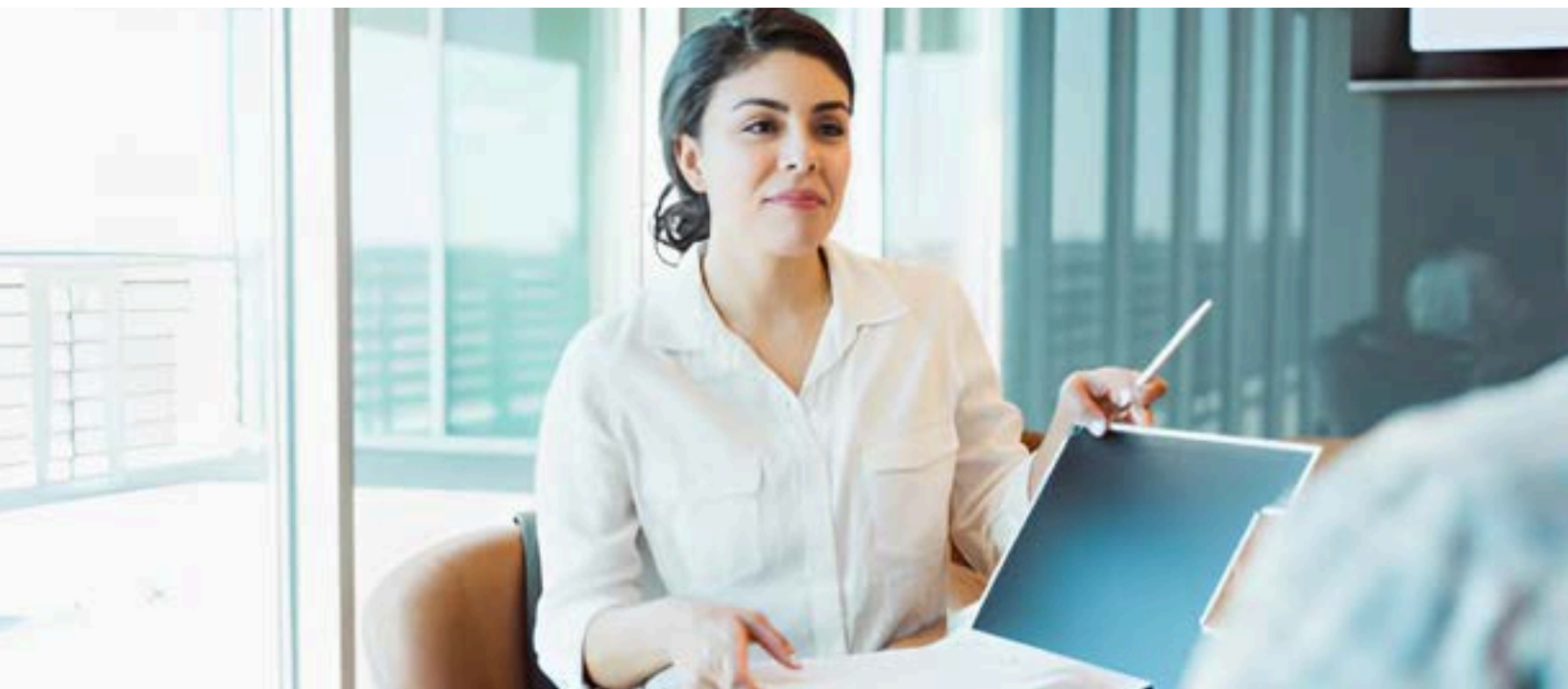
Visit <https://www.fbd.org/delawarefoodworks/>, for more information and to enroll.

WHA PARTNERS WITH DSAAPD TO PROVIDE SUPPORT TO RESIDENTS

The Wilmington Housing Authority partners with the Division of Services for Aging and Adults with Physical Disabilities (DSAAPD) to expand the support and resources available to residents. DSAAPD staff members are onsite at several WHA locations to provide information and other resources to residents, including referrals, counseling options, and other resources.

DSAAPD's mission is to promote dignity, respect, and inclusion for older adults and people with disabilities. Residents can connect with DSAAPD staff members every month in the community room of the following locations:

DAY	LOCATION	TIME
TUESDAYS (Jan. 21st & Feb. 18th)	BAYNARD APARTMENTS (309 W. 18th Street, Wilmington, DE 19802)	11:00 AM to 1:00 PM
TUESDAYS (Jan. 21st & Feb. 18th)	CRESTVIEW (2700 N. Market Street, Wilmington, DE 19802)	2:00 PM to 4:00 PM
WEDNESDAYS (Jan. 22nd & Feb. 19th)	COMPTON TOWERS (325 E. 5th Street, Wilmington, DE 19801)	11:00 AM to 1:00 PM
WEDNESDAYS (Jan. 22nd & Feb. 19th)	HERLIHY APARTMENTS (320 E. 5th Street, Wilmington, DE 19801)	2:00 PM to 4:00 PM
THURSDAYS (Jan. 23rd & Feb. 20th)	PARK VIEW (1800 N. Broom Street, Wilmington, DE 19802)	11:00 AM to 1:00 PM



DCJ IS RECRUITING

Delaware Center for Justice (DCJ) is seeking a Case Manager Community Reintegration Services Program at their location of 100 W. 10th Street, Suite 905, in Wilmington, DE. The position has a salary range of \$45,000.00 to \$70,000.00 annually depending on experience and includes benefits.

For a full job description and to apply, visit <https://dcjustice.org/case-manager-crsp-2/>.

EASTERSEALS IS HIRING

Easterseals of Delaware & Maryland's Eastern Shore are hiring for 12 positions statewide in Delaware with six being in New Castle County. The New Castle County opportunities are:

1. Adult Day Health Program Registered Nurse
2. Activity Assistant
3. Activity Coordinator
4. Agency With Choice Coordinator
5. PEDs Coordinator
6. Speech Language Pathologist

Visit https://www.easterseals.com/de/about-us/careers-at-easterseals/?utm_source=topnav&utm_medium=web&utm_campaign=careertest, for full statewide listing, job descriptions and to apply.

STRIVE HAS OPPORTUNITIES

STRIVE of Wilmington has two opportunities Coach and Coach in Training for Strive Clinic (Basketball, Soccer or Volleyball) at the Sanford School in Hockessin as a contractor in February 2025. There would be two virtual and two in- person sessions.

Visit <https://striveleadership.org/careers/>, for full job description, more information and steps to apply.

BOYS & GIRLS CLUBS OF DELAWARE HAS OPENINGS

Boys & Girls Clubs of Delaware has 14 openings in New Castle County for part and full-time positions that include corporate and direct service with members. Below are several of the openings:

- o YDP II - Prevention Instructor
- o Facilities & Aquatics Director
- o Jr. Youth Development Professional
- o Youth Development Professional
- o Education Director
- o Youth Activity Worker

Visit <https://www.bgclubs.org/delaware-career>, for full job descriptions and opportunities in Kent and Sussex Counties and to apply.



PRIMOS HOAGIES IS HIRING

Primos Hoagies of 3616 Kirkwood Hwy, Ste G, in Wilmington, DE has five positions available. The following are available opportunities:

1. Manager
2. Front Counter
3. Slicer
4. Dresser
5. Delivery Driver

Visit <https://www.primohoagies.com/jobs> for job descriptions.

METHOD COMPANY HAS OPENINGS

Method Company's The Quoin Hotel at 519 North Market Street, in Wilmington, DE has eight openings. Positions available include:

- Director of Rooms
- Dishwasher
- Barista/Café Shift Lead
- Server
- Host
- Runner
- Line Cook
- Bartender

For detailed job descriptions and to apply, visit <https://www.methodco.com/>.



GREAT WOLF LODGE IS RECRUITING

Great Wolf Lodge of Perryville, Maryland is recruiting 20 positions across a variety of departments and skillsets. Available opportunities being offered include:

- Director, Housekeeping
- Aquatics Technician
- Sous Chef
- Night Auditor
- IT Manager

For full listing of opportunities and job descriptions, visit <https://www.greatwolf.com/jobs>.

HARRY'S HOSPITALITY GROUP IS HIRING

Harry's Hospitality Group is hiring at all three locations, Harry's Savoy Grill, Harry's Savoy Ballroom and Kid Shelleen's (two locations). There are 22 openings across locations with immediate openings for:

- Executive Sous Chef
- Sous Chef
- Line Cook
- Prep Cook/Production Lead - Kid Shelleen's Branmar Plaza
- Banquet Positions
- Restaurant Positions: Server, Bartender, Host, Bus, Expeditor

Visit <https://www.harryshospitalitygroup.com/employment/> for full job descriptions and to apply.



VA WILMINGTON HEALTHCARE SYSTEM IS HIRING

Veteran Administration (VA) Wilmington has openings available in a wide range of fields of employment. In addition to on-site positions, there are remote opportunities as well. Several positions available include Advanced Practice Nurse - Chief Certified Registered Nurse Anesthetist, Physician - Cardiologist and Food Service Worker.

When applying, follow the "How to Apply" and "Required Documents" instructions in each job announcement. They're the primary guide for responding to openings. Except for a few health care jobs, most positions require online applications. So, it's important to fully complete the online application process to receive your email confirmation. If you need help or have questions, call or email the person listed in the "Agency Contact Information" section near the bottom of the announcement.

For those seeking a nursing position, call Nurse Recruiter Michelle Hailey at 1-800-461-8262. For a full listing of all jobs nationwide and remote, visit <https://www.usajobs.gov/>, for full job descriptions, salary ranges and to apply.

CITY OF WILMINGTON HAS OPPORTUNITIES

City of Wilmington has 11 opportunities with an application deadline of open till filled spanning across several career paths. Below are several opportunities:

- Equipment Operator (2)
- Forestry Programs & Operations Supervisor
- Freelancer
- Occupation Health Nurse
- Sanitation Driver
- School Crossing Guards
- Signal Electrician

For more opportunities, full job descriptions and to apply, visit <https://cityofnewarkdeemployees.munisselfservice.com/employmentopportunities/default.aspx>.





FASTSIGNS HAS OPENINGS

Fastsigns has five openings in their Wilmington, DE location of 1300 First State Blvd, Suite G. Positions and the number available over one include:

- Administrative Assistant (2)
- Installer
- Customer Service Representative (2)

For full job descriptions and to apply, visit <https://www.fastsigns.com/first-state-blvd-wilmington-de/about-us/careers/>.



WAWA IS HIRING

Wawa has eight store opportunities in both leadership and associate level in Wilmington with additional opportunities in New Castle, Newark and Bear. At the corporate level, out of Media, PA, there is an opening for a People Analytics Strategist and Head of People Team Operations and Associate Experience.

Visit <https://www.wawa.com/>, for full job descriptions and to apply.

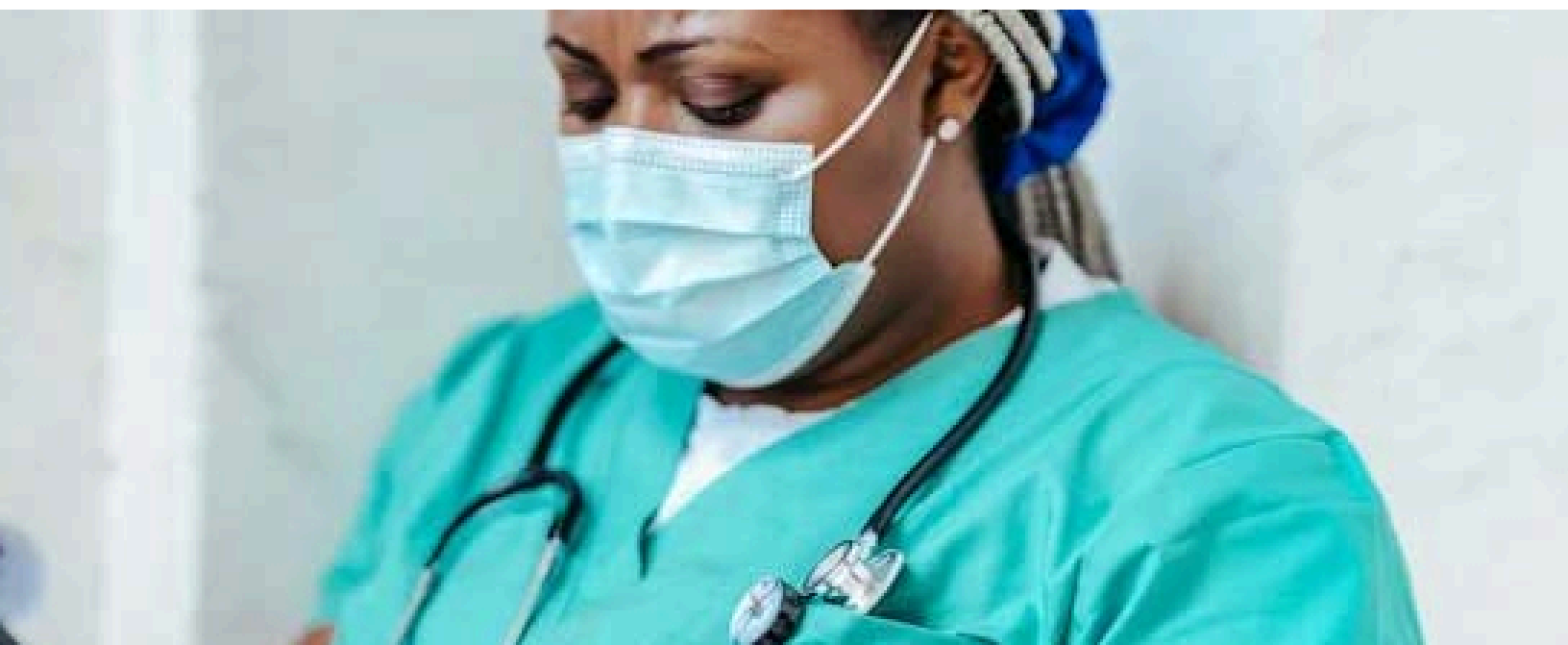
FORMAN MILLS IS RECRUITING

Forman Mills Department Store has over ten positions available in their Wilmington, DE location at 4411 N. Market Street. Positions include both full and part-time opportunities. Several of the positions are:

- Merchandise Manager,
- Back End - Back End Supervisor,
- Front End - Front End Manager PT
- Sales Associate - Department Manager
- Front End - Customer Service
- Back End - Maintenance

For a full list of opportunities, full job descriptions and to apply, visit <https://formanmills.com/careers/>.





DNA IS HIRING

Delaware Nurses Association (DNA) offers jobs and recourses to nurses at any stage of their career. DNA website offers job searching tips, tools and resume review, a Career Planning Portal and more as resources.

Visit <https://www.denurses.org/Career> to create a profile and access DNA's openings and resources.

LONGWOOD GARDENS HAS OPPORTUNITIES

Longwood Gardens, located in Kennett Square, PA has three full-time and part-time horticulture and 48 restaurant positions. Opportunities available are:

- Plant Health Care Technician
- Specialty Orchard Grower
- Associate Director, Floriculture Production
- Restaurant Manager
- Food Service Worker
- Busser
- Catering Cook
- Baker
- Chef
- Restaurant Host/Hostess

For openings and to apply, visit <https://longwoodgardens.org/employment/opportunities>.

AMERIHEALTH HAS AN OPENING

AmeriHealth Caritas has a Resource Coord II position open in Newark, DE and five positions over various departments in Philadelphia, PA. For full job descriptions, to apply and search for positions outside of Delaware, visit <https://careers.amerithealthcaritas.com/us/en>.

WESTSIDE FAMILY HEALTHCARE IS RECRUITING

Westside Family Health (WFH) has over 35 positions available in New Castle County, including both direct service to patients as well as support staffing. Below are several current openings in New Castle County:

- Lead Health Information Management Specialist
- Director, Human Services
- Social Services Case Manager
- Behavioral Health Counselor
- Dental Hygienist
- Dental Assistant
- Family Nurse Practitioner
- Medical Assistant (English & Bilingual Spanish)
- Patient Navigator Cancer Screening
- Community Navigator
- Community Health Worker
- Enrollment Specialist

For a full listing of openings with various locations statewide, job descriptions and to apply, visit <https://www.westsidehealth.org/careers/>.



UNIVERSITY OF DELAWARE IS HIRING

University of Delaware has 115 openings in Newark, DE including 22 hybrids. Staff positions account for 71 of the openings. Staff and Administrative areas include, but not limited to, Administrative Support, Athletics, Communications & Public Relations, Facilities Management, Health Services, Human Resources, Research & Laboratory, Student Affairs & Services, and Trainers & Educators.

For a full list of current opportunities in all departments, full job descriptions and to apply, visit <https://www.udel.edu/faculty-staff/human-resources/careers/>.



GOLDEY BEACOM HAS JOB OPPORTUNITIES

Goldey Beacom College has seven job opportunities including teaching and support staff. One staff position and six faculty opportunities:

- Maintenance Custodian
- Assistant or Associate Professor of Sports Management
- Assistant or Associate Professor of Communication & Media
- Assistant or Associate Professor of Human Services
- Adjunct Instructor of Business
- Adjunct Instructor of Mathematics
- Adjunct Instructor of Composition

For full job descriptions and to apply, visit <https://www.gbc.edu/career/>.

WILMINGTON UNIVERSITY IS HIRING

Wilmington University has eight positions in New Castle County with six in New Castle, DE, one in Brandywine, DE and one in Bear, DE. New Castle County opportunities are:

- Administrative Coordinator
- Assistant Coach, Women's Basketball
- Constable
- Data Analyst
- Faculty & Chair, DBA Program
- Lab Proctor
- University Safety Cadet
- Technology Support Assistant

For full job descriptions and to apply, visit <https://www.wilmu.edu/humanresources/>.

DELTECH HAS OPENINGS

Delaware Technical Community College (DelTech) needs Instructors and Administrative/Staff employees. Openings include a wide range of business areas and skillsets. Positions include full and part-time, as well as Adjunct status. Opportunities in Newark, DE and Wilmington, DE include, but not limited to:

- Adjunct Instructor- ESL
- Dental Assistant I
- Adjunct Instructor- Spanish
- Facilities Sanitation Tech- (Part -Time Evening)
- Manufacturing Specialist II
- Fiscal Administrative Officer
- Instructional Tutor I- Science
- Academic Support Assistant - English
- Information Technology Technician I
- Student Success Aide - Student Affairs
- Peer Tutor
- Student Intern - Bio/Chem
- Academic Support Assistant-MET
- Applications Development Specialist

For full list of opportunities, job descriptions and to apply. visit <https://dtcc.peopleadmin.com/>.



SPOTLIGHT DELAWARE IS HIRING

Spotlight Delaware is hiring a Marketing and Events Manager. Minimum of three years of experience in event management, marketing or communications. Bachelor's degree in marketing, Communications, Journalism or a related field.

To apply, send a resume, cover letter, and two designs and two writing samples to Matt Sullivan at msullivan@spotlightdelaware.org.

ANALYTIC SEARCH GROUP IS RECRUITING

Analytic Search Group, a professional staffing agency, has three remote and three Newark, DE positions available. Positions available are:

- Cloud Engineer / Architect - Remote
- AWS DevOps Engineer - Remote
- Senior Cloud Developer - Remote
- Technical Support Analyst (Level II)- Newark (three openings)

For full job descriptions and to apply, visit <https://www.analyticsearch.com/jobs/>.

SAFELITE AUTO GLASS IS HIRING

Safelite Auto Glass is hiring a full-time Store Manager at their 4722 Kirkwood Hwy., Wilmington, DE location. Visit <https://www.safelite.com/careers>, for job description and to apply.

W.L. GORE IS HIRING

W.L. Gore has two full facilities based and two remote career opportunities associated with their Newark, DE location. Positions available are Category Manager - Professional Services/HR, Clinical Study Management (Remote), Global Clinical Research Strategist (Remote) and Paralegal.

Visit <https://www.gore.com/careers>, for job descriptions and to apply.

CITY NATIONAL BANK HAS OPENINGS

City National Bank has six full-time positions in their 4550 New Linden Hill Road, Wilmington, DE location across multiple business units. Below are the openings:

- Senior Data Analyst
- Trust Administration Officer I
- Risk Reporting Lead
- Manager Marketing Technology
- Sales Support Officer III
- Shared Services Senior Manager

For remote opportunities, job descriptions and to apply, visit <https://careers.cnb.com/>.



WSFS BANK HAS OPENINGS

WSFS Bank has over 20 openings, in Wilmington, DE as well as additional positions statewide. Career opportunities both direct consumer contact and back office include, but are not limited to Change Management Analyst, Special Assets Relationship Manager, Fiduciary Associate, Personal Banker, Fraud Analyst, Commercial Credit Analyst, Director of Total Rewards, Loan Servicing Specialist Team Lead and IT Operations and Production Support Engineer .

For job descriptions and to apply, visit <https://www.wsfsbank.com/about/careers/>.



M&T BANK CORP HAS OPPORTUNITIES

M&T Bank in Wilmington, DE has over 50 openings, across multiple business sectors. Positions include IT Lead Auditor (Hybrid), Administrative Assistant, Enterprise Data Analyst Senior and Teller.

Visit <https://mtb.wd5.myworkdayjobs.com/MTB>, for a full list of opportunities, job descriptions and to apply.

BARCLAYS BANK IS RECRUITING

Barclays Bank is recruiting for 25 positions located in Wilmington, DE with additional positions in surrounding areas. Below are opportunities available in multiple departments:

- AVP Fraud Strategy Manager
- Email Developer
- Instructional Designer
- Relationship Manager
- Marketing Manager
- Internal Fraud Investigator

For full job descriptions and to apply on-line, visit <https://search.jobs.barclays/>.

EDWARD JONES IS HIRING

Edward Jones, located at 724 Yorklyn Road, Ste 325, in Hockessin, DE has two full-time Branch Officer Administrator positions open.

Visit <https://careers.edwardjones.com/job-search-results/?location=United%20States&country=US&radius=25&units=km>, for job description and to apply.

HIGHMARK HEALTH OPTIONS MEMBERS: YOU DESERVE A REWARD.



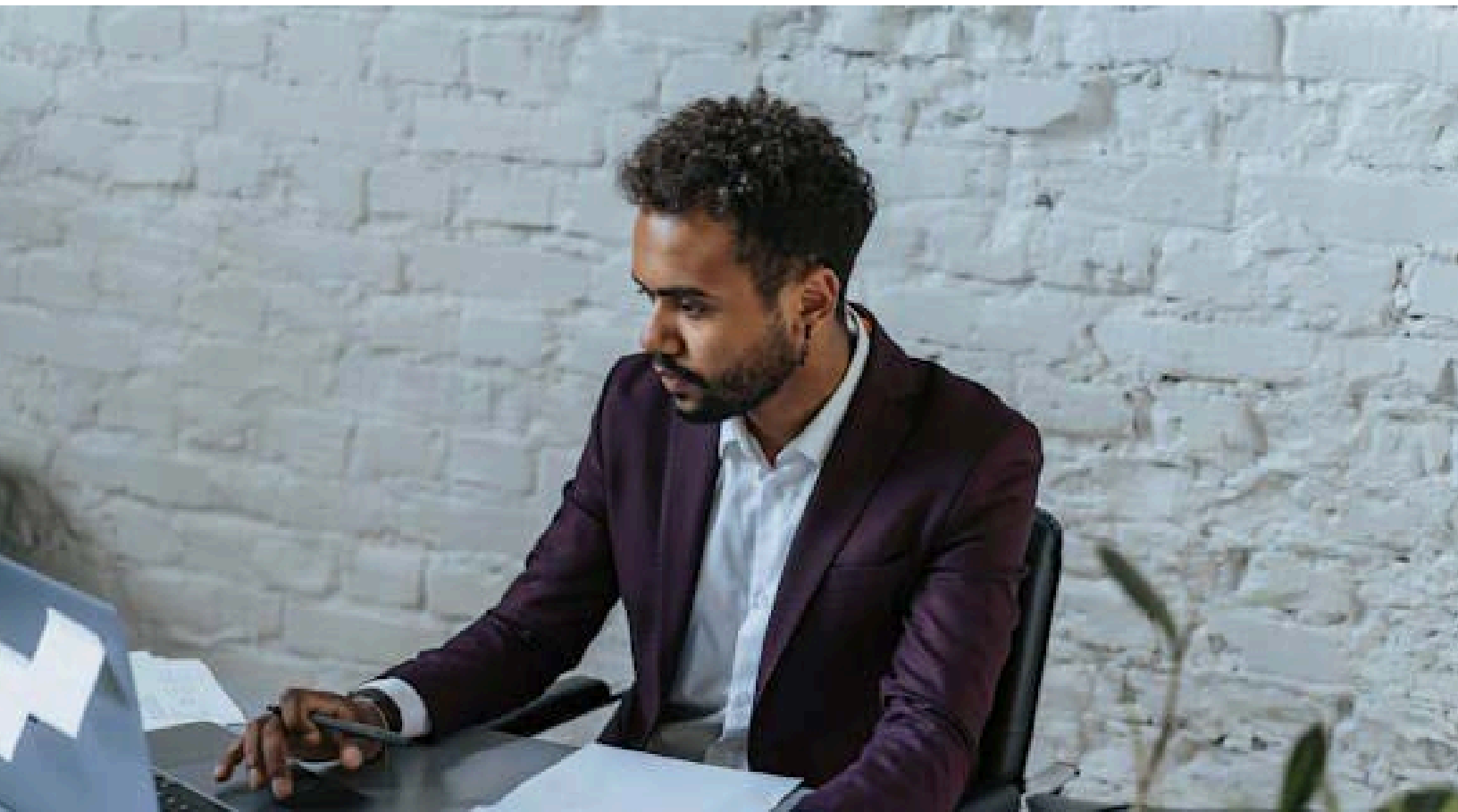
Healthy Rewards is one of your Highmark Health Options benefits. You or your child can earn rewards when you complete certain healthy activities. We'll tell you what healthy activities you qualify for based on your age, gender, and health conditions. You can earn \$10 to \$25 for each healthy activity, such as an annual physical or a blood sugar screening. Healthy activities for babies include a lead screening and baby wellness visits.

Take care of your health.

Sign up and see the rewards you can earn.
Scan, go online, or call today.
my.therapayrewards.com/hho

1-866-469-7973





THE WILMINGTON HOUSING AUTHORITY IS ONLINE

The Wilmington Housing Authority posts regular announcements and events on our website as well as our Facebook, Instagram and LinkedIn pages. Scan the QR codes to visit our website (<https://whadelaware.org/>) and our social media pages.



WHA WEBSITE



WHA FACEBOOK
PAGE



WHA INSTAGRAM
PAGE



WHA LINKEDIN
PAGE

For general questions, inquiries, and other information for Wilmington Housing Authority's Executive Director, Ray Fitzgerald, please contact Azsana Wing, Confidential Executive Assistant, at AWing@whadelaware.org.