

APRIL 2025

IN THE NEWS

THE WILMINGTON HOUSING AUTHORITY'S QUARTERLY NEWSLETTER



WILMINGTON HOUSING AUTHORITY AT A GLANCE

Welcome to the Wilmington Housing Authority's (WHA) Quarterly Newsletter.

WHA is the largest direct provider of affordable housing opportunities in the State of Delaware. We are committed to developing, providing, and managing safe and affordable housing for low-income families in the City of Wilmington.

During the fourth quarter, the Wilmington Housing Authority YouthBuild Program continued to support participants in achieving their professional goals. Participants in the program completed lead abatement training and earned their High School Diplomas. While in the program, the youth also participated in team building exercises, identified their career goals and aspirations and obtained employment.

The Division of Services for Aging and Adults with Physical Disabilities (DSAAPD) continued providing workshops and on-site support to WHA residents. DSAAPD will continue to host workshops once a month at five WHA locations.

Please keep reading for more updates, stories, and resources from the Wilmington Housing Authority.

WHA Resources

- 09 Community Resources
- 26 WHA & DSAAPD Partnership
- 27 Employment Resources & Opportunities

Featured Articles

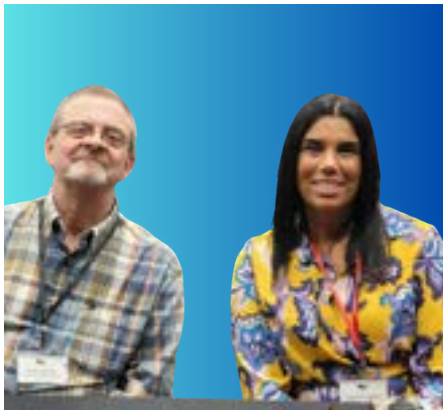
- 02 Spotlight on Procurement
Ray Fitzgerald Named One of
- 03 Delaware's Most Influential People
- 03 New Neighborhood, Fresh Start: The Johnson Family Finds Home
- 04 WHA Kicks Off National Employee Appreciation Day
- 05 Jessica Baynard Highlights Benefits of Section 8
- 06 Quarterly Resident Council Leadership Meeting

SPOTLIGHT ON PROCUREMENT: THE HANDS THAT KEEP WHA MOVING

At the Wilmington Housing Authority (WHA), every successful project, purchase, and partnership is made possible by the dedicated efforts of our Procurement Team—an essential force behind the scenes. Like the hands of a clock, our Procurement professionals keep WHA moving forward with precision, care, and a commitment to excellence. This March, during Procurement Month, we proudly celebrated the outstanding work of Victoria (Vicki) DiSabatino, Chief of Procurement, and her dynamic team: Xavia Mills, Purchasing Agent Lead; Laverne Hanson, Procurement Specialist; Francis (Frank) Ginocchio, Purchasing Agent; and Jazmine Lockley, Purchasing Agent.

Procurement plays a vital role in WHA’s ability to provide safe, affordable housing and essential services to more than 7,000 residents across Wilmington. Whether sourcing materials for critical renovations or securing service contracts that keep our communities running smoothly, this team ensures every purchase reflects our values of integrity, accountability, and fiscal responsibility. Their focus on customer service and responsiveness empowers every WHA department to operate efficiently and effectively, helping us deliver on our mission with confidence.

We are deeply grateful for the Procurement Team’s unwavering dedication and high standards. Their work not only supports WHA’s day-to-day operations—it strengthens our foundation for future growth. As we reflect on their impact, we encourage all readers to stay connected with WHA by subscribing to our newsletter and following us on social media. Share this spotlight with your networks and help us recognize the exceptional people behind WHA’s continued success. We look forward to highlighting more of our talented teams in upcoming editions.



Pictured Above: From left to right Frank & Vicki



Pictured Above: Xavia Mills.



Pictured Above: Jazmine Lockley.



Pictured Above: Laverne Hanson.

RAY FITZGERALD NAMED ONE OF DELAWARE’S MOST INFLUENTIAL PEOPLE IN THE COMMUNITY FOR THE SECOND YEAR IN A ROW

Wilmington Housing Authority (WHA) is proud to announce that Ray Fitzgerald, Executive Director of WHA and President of Delaware Affordable Housing Group (DAHG), has been recognized as one of Delaware’s Most Influential People in the Community for the second consecutive year. This well-earned recognition highlights his unwavering commitment to expanding affordable housing, fostering economic empowerment, and strengthening communities throughout Wilmington and beyond. Under his leadership, WHA has secured a \$50 million grant to revitalize the Riverside neighborhood and has developed over 140 units of affordable housing in Delaware, providing much-needed stability for individuals and families.



Pictured Above: Ray Fitzgerald

With an extensive background in housing administration, social services, and community engagement, Fitzgerald has consistently bridged the gap between government agencies, nonprofits, and communities to create lasting change. His previous role as Director of the Delaware Division of Social Services gave him deep experience in managing large-scale

programs such as Medicaid, SNAP, and TANF, as well as employment initiatives that improved workforce outcomes. His leadership during the COVID-19 pandemic, particularly through the Community Partner Support Unit, played a critical role in helping Delawareans navigate essential resources in times of crisis.

Beyond his work with WHA and DAHG, Fitzgerald continues to advocate for equitable housing and workforce development by serving on multiple boards, including REACH Riverside, Project New Start, Rodney Street Tennis and Tutoring Association, and the Delaware Workforce Investment Board. His influence extends far beyond affordable housing, touching every aspect of community development and support. WHA congratulates Ray Fitzgerald on this well-deserved recognition and looks forward to continuing the impactful work he has championed for Wilmington residents.

A NEW NEIGHBORHOOD, A FRESH START: THE JOHNSON FAMILY FINDS HOME



Pictured Above: Jennifer Johnson.

When Ms. Johnson’s family unexpectedly grew last this year, her housing needs quickly shifted. She began searching in January 2024, navigating uncertainty and concern about where her family would land. By October, WHA’s Premier Rapid Housing Placement Team stepped in, and Housing Locator Jennifer Harris became her trusted guide. With empathy, persistence, and professionalism, Jennifer helped Ms. Johnson find a home in the very neighborhood she hoped for—offering not just shelter, but stability and a renewed sense of peace. Ms. Johnson shared, “Jennifer was nothing but wonderful, even when I was worried we’d be homeless.” Today, her family is thriving in a space they can finally call their own.

Stories like the Johnson family’s remind us why the work we do matters. WHA is proud to celebrate every successful placement, and we invite you—residents, landlords, and community partners alike—to support our mission. Whether you’re looking for housing, know someone in need, or have properties to offer, our Premier Rapid Housing Placement Team is actively building partnerships statewide to connect families with safe, affordable homes. Stay connected with WHA by reading and sharing our newsletter, and following us on social media for more real-life success stories that inspire and uplift. Together, we can build stronger communities—one home at a time.

WHA KICKS OFF NATIONAL EMPLOYEE APPRECIATION DAY WITH A FESTIVE BREAKFAST

Wilmington Housing Authority's (WHA) Lower Income Public Housing (LIPH) team started National Employee Appreciation Day, Friday, March 7, 2025, on a high note with a warm and festive Annual Employee Appreciation Breakfast at the WHA Warehouse. The space was transformed into a cheerful setting where leadership and team members gathered to enjoy a delicious buffet featuring chicken sliders, Danishes, fruit and cheese platters, Pop-Tarts, jumbo muffins, coffee, and more. The event was a token of gratitude from WHA leadership, recognizing the hard work and dedication of the team members who serve residents daily.

LeKeisha Watson, WHA District Manager, was pleased with the strong turnout and the smiles shared among team members as they enjoyed the breakfast. Throughout the event, she and the leadership team expressed their appreciation and encouraged everyone to take a moment to celebrate their efforts. WHA's Executive Director, Ray Fitzgerald, also attended the event, personally thanking team members for their dedication and contributions to WHA's mission. The morning was filled with camaraderie and gratitude, setting the tone for a day of well-deserved recognition.



Pictured Above: LIPH Team Members.



Pictured Above: LIPH Team Members.



Pictured Above: LIPH Team Members.



Pictured Above: Ray Fitzgerald & Patricia Stewart.



Pictured Above: LeKeisha Watson & Richard DeJesus.



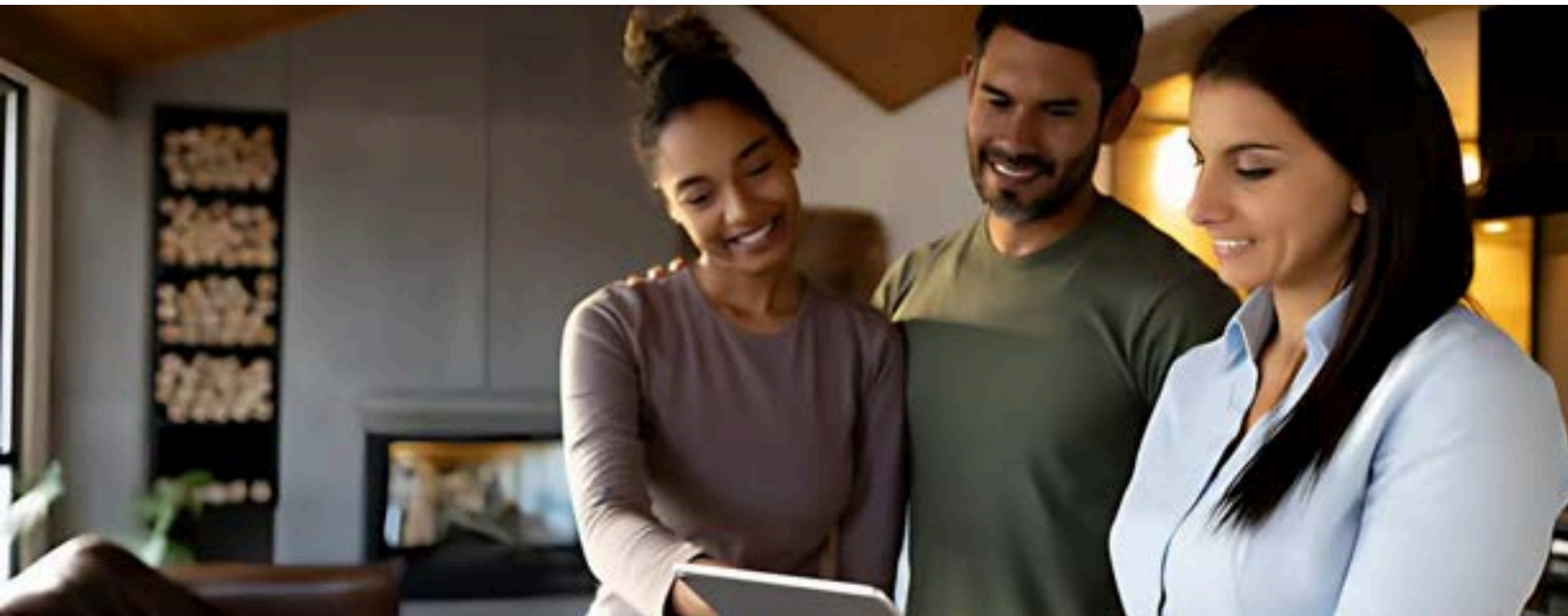
Pictured Above: Geoffrey Womack, Ray Fitzgerald, LeKeisha Watson and Manuel Cintron.



Pictured Above: LeKeisha Watson & Linda McGoy.



Pictured Above: Forward: Mike Clark, Side Facing: Chris Dorman.



WHA'S JESSICA BAYNARD HIGHLIGHTS BENEFITS OF SECTION 8 PARTICIPATION AT JUMPSTART WILMINGTON EVENT

On Monday, March 31, 2025, Jessica Baynard, Housing Specialist Supervisor at the Wilmington Housing Authority (WHA), served as the featured speaker for a virtual Jumpstart Wilmington session focused on engaging current and prospective landlords. Designed to educate attendees on the process and benefits of becoming a Section 8 landlord, the session attracted approximately 90 participants and included dynamic interaction, with landlords actively asking questions and expressing interest in WHA's Housing Choice Voucher (HCV) program. While no new landlords have yet leased to voucher holders, Jessica received follow-up inquiries from two participants, reflecting growing interest in supporting affordable housing options in Wilmington.

Jessica emphasized that one of the most attractive aspects of participating in the Section 8 program is that landlords have the



Pictured Above: Jessica Baynard

unique opportunity to directly impact the lives of families in need of stable housing, particularly in today's competitive rental market. Additionally, the consistency of rental payments—WHA provides a reliable portion of the rent each month. For those interested in becoming a Section 8 landlord, the first step is selecting a tenant with a voucher and submitting a Request for Tenancy Approval (RFTA) packet, along with the necessary documentation. Landlords can contact Jessica Baynard directly at WHA with any questions. WHA extends its appreciation to all landlords—new and current—who contribute to expanding quality housing opportunities in the City of Wilmington.

QUARTERLY RESIDENT COUNCIL LEADERSHIP MEETING BUILDS UNITY, EMPOWERMENT, AND ENGAGEMENT

On Wednesday, March 12, 2025, residents and staff gathered for the first Quarterly Resident Council Leadership and Capacity Building Partnership Network Meeting of the year. Led by Resident Services Chief, Irminia Brown-Williams, the session opened with warmth and energy, setting the tone for an engaging afternoon of information-sharing and collaboration. Participants kicked off the meeting with a fun icebreaker—sharing their top three favorite movies—which sparked conversation and helped everyone feel more connected. With introductions complete and spirits lifted, Reverend Kathleen Johnson, Resident Council Chaplin, offered a heartfelt opening prayer, reminding attendees of the importance of unity and purpose in building stronger communities.

Key highlights included a powerful presentation by Yolanda Mohammed, an independent insurance broker and WHA Community Partner, who shared valuable insights into Medicare and Medicaid plans and discussed her commitment to supporting community events—including possibly lending her DJ talents to future resident gatherings. Nakia Wallace of the Resident Services team gave an inspiring update on the Home Ownership Program, detailing the resources available to help residents navigate their path to financial independence and long-term housing stability. From credit-building workshops to one-on-one counseling, Nakia emphasized that with dedication and support, homeownership is an achievable goal for WHA families.

Shanitha Gray, Resident Services Coordinator, wrapped up the meeting with a motivational reminder about the critical role resident councils play in maintaining communication, following bylaws, and representing their communities. She encouraged consistent engagement, participation in Friday presentations, and stronger relationships with property managers. WHA is proud to offer spaces like these where residents grow, connect, and lead. Be sure to follow WHA on social media to stay informed, celebrate community wins, and find out how you can take part in upcoming events and opportunities that make WHA not just a place to live—but a place to thrive.



Pictured Above: Participants in Quarterly Resident Council Leadership Meeting.

BUILDING FUTURES: LEAD ABATEMENT PARTICIPANTS TAKE THE NEXT STEP IN THEIR CAREERS



Pictured Above: Interviews in Process.

On Friday, March 7, 2025, WHA Workforce Training Headquarters hosted on-site employment interviews, providing an invaluable opportunity for participants seeking careers in the construction industry. Nine WHA Workforce Training and four Lead Abatement participants engaged in interviews with five local construction companies: Chapman & Sons, JF Build, Community Developer Solutions, Offshore Construction, and Abundant Home Inspection. These interviews were a crucial step in bridging the gap between training and employment, offering young individuals the chance to apply their skills in a professional setting. The event was not only a milestone for participants but also a testament to the impact of WHA's Workforce Training and Lead Abatement programs in preparing individuals for the workforce.

The event generated positive feedback from both participants and employers. Many participants experienced a mix of excitement and nerves but felt well-prepared thanks to their training. Employers praised the professionalism and readiness of the candidates, with some noting their enthusiasm and skill level. Encouragingly, two participants were immediately selected for employment, with additional hiring decisions still pending. "It was a great opportunity for the young participants," said Desired Castro, WHA's Workforce Training Lead Abatement Job Developer. "Having five construction companies come in to interview them allowed them to explore potential job opportunities and gain valuable experience in a real-world setting." The success of the event underscores WHA's commitment to workforce development, opening doors for future employment and career growth for WHA's Workforce Training graduates.

For more information on how you or your organization can become a WHA Workforce Training Partner, contact WHADEYouthBuild@whadelaware.org.

WHA WORKFORCE TRAINING SUCCESS: JAZMINE TLASECA EARNED HIS HIGH SCHOOL DIPLOMA

Congratulations to WHA Workforce Training participant Jazmine Tlaseca for earning her high school diploma from Penn Foster in March 2025. This remarkable achievement is a reflection of Jazmine's persistence, dedication, and belief in her own potential. Balancing academic goals with the hands-on demands of the WHA's Workforce Training program is no small feat, and Jazmine has risen to the occasion with focus and determination. Her success underscores the strength of character she brings to every challenge and serves as a powerful example to fellow participants and the broader community.



Pictured Above: Jazmine Tlaseca

At Wilmington Housing Authority, we proudly celebrate Jazmine's accomplishment and the journey she's taken to reach this important milestone. Her success highlights the transformative impact of WHA's Workforce Training and the value of creating pathways to education and career advancement. With the support of staff, mentors, and community partners, Jazmine has taken a bold step forward—and we are excited to see how she continues to grow, contribute, and lead in the next chapter of her journey.

For more information on how you or your organization can become a WHA's Workforce Training Partner, contact WHADEYouthBuild@whadelaware.org.

BUILDING SAFER HOMES AND STRONGER CAREERS THROUGH LEAD ABATEMENT TRAINING

WHA's Workforce Training Program continues to create meaningful career pathways while addressing critical housing safety needs through its Lead Abatement Training initiative. On Wednesday, March 26, 2025, WHA hosted a Lead Abatement Q&A Session for seven of our active Employer Partners. This session, held in collaboration with WHA staff, provided a platform to review current lead remediation projects and discuss the hiring and integration of WHA-trained participants into active job sites. To date, 21 program graduates have been hired directly by partners working on WHA units—testament to the value of targeted training and strong employer collaboration.



Pictured Above: WHA Team Members

Since its launch, the Lead Abatement Training Program has equipped more than 40 individuals with industry-recognized skills and certifications through partnerships with Access Training, Delaware Technical Community College and Energy Coordinating Agency. These graduates are contributing to safer, healthier homes in Wilmington while advancing their own economic independence. WHA is actively recruiting both new trainees and employer partners to support this growing initiative. The program's dual impact—workforce readiness and community well-being—continues to affirm WHA's commitment to sustainable, people-focused solutions.

For more information on how you or your organization can become a YouthBuild Employer Partner, contact WHADEYouthBuild@whadelaware.org.

PREMIER RAPID HOUSING PLACEMENT TEAM HOUSING LOCATOR SERVICES

The Delaware Affordable Housing Group (DAHG) is the non-profit affiliate to WHA. The Housing Locators on DAHG's Premier Rapid Housing Placement Team (PRHPT) had a stellar first quarter of 2025.

The team assisted 46 families in locating housing in first quarter of 2025. Two placements were residents transitioning from Riverside Family Development, and another four families that were self-pay. Clients are referred to the team through several sources such as Delaware Helpline and WHA's Section 8 Team. Our team is committed to helping families identify affordable and safe housing statewide. Most clients had housing vouchers, and all clients were pleased to have assistance in their journey.

If you or someone you know needs housing locator assistance, call 302-429-6701 or email dahgresource@whadelaware.org.



Pictured Above: Wayne Jefferson, Jennifer Harris and Delilah Espinosa.

LUTHER TOWERS HAS OPENINGS

Luther Towers of Wilmington has immediate openings for individuals 62 years old or older in their subsidized housing community of studio and 1-bedroom apartments. Experience the perfect blend of comfort and community. These newly renovated spacious apartments feature modern amenities and enjoyable on-site services such as a fitness center, library, computer lab, laundry facility, and inviting community spaces. With easy access to local shops, dining, and public transportation, everything needed is just moments away.



For more information, email luthertowers@pkmanagement.com or call 302-652-3737. Visit <http://www.luthertowers.com/independent-living-apartments/> for more details and to apply.



DAHG HAS NEW CONSTRUCTION HOMES AVAILABLE

Wilmington Housing Authority (WHA)'s non-profit partner, The Delaware Affordable Housing Group (DAHG), proudly introduces McMullen Square Townhomes, one of Wilmington's premier new construction communities. McMullen Square offers spacious, three-story townhomes with three bedrooms and 2.5 bathrooms.

These newly constructed townhomes boast modern style and coveted amenities, including multi-level living, eat-in kitchens, rear decks, and an oversized garage.



Close to schools, and minutes from Wilmington's Train Station, I-95 and I-495, McMullen Square, provides unparalleled convenience. Phase One of McMullen Square will be delivered by the end of 2024. Depending on the lot, the buyers will have the option of a one or two-car garage, allowing for interior customization to suit individual preferences. McMullen Square townhomes come in two primary layouts ranging from 1767 to 1982 square feet.

For more information on available properties, contact Gary Williams at 302- 368-1621 or Co-Listing Agent, Simone J. Braxton 302-887-0772, BHHS Fox & Roach-Christiana.



ONE-STOP SHOP ENVISION CENTER HOMEBUYER'S WORKSHOPS

The WHA One Stop Shop's (OSS) Envision Center is hosting a Homebuyer's Workshop on May 8, 2025, and June 12, 2025, at 2:00 PM. The Homebuyer's Workshop is offered virtually every second Thursday of the month. In 2024, there was an attendance of over 240 individuals. For more information or to register, call the WHA One Stop Shop at 302-269-9126.

PROTECT YOURSELF FROM SCAMS: STAY INFORMED, STAY SAFE

Wilmington Housing Authority urges residents to stay vigilant against increasingly deceptive scams targeting households in our community. One common tactic is the Compromised Card Scam, where fraudsters pose as bank representatives and claim your card has been compromised—then offer to "secure" your account by collecting the card in person, only to use it for theft. Another is the Rental Property Scam, involving fake property listings that request upfront payments for homes that either don't exist or are already occupied. Lastly, the Online Shopping Scam lures victims with low prices through fake websites or social media ads that never deliver the goods. To protect yourself, always verify phone calls using official contact numbers, pause if pressured to act quickly, and never pay with gift cards or provide personal information to unverified sources. If something feels off, talk it through with someone you trust. Scammers thrive on urgency and confusion—your best defense is awareness and caution.

SENIOR TREE REMOVAL GRANT PROGRAM

New Castle County offers the Senior Tree Removal Program to those that qualify. One homeowner must be at least 62 years of age to participate. The program assists seniors remove damaged, dead or dying trees or tree limbs from their property. Grants are awarded on a first come first serve basis, if funding is available. Tree trimming services are not provided through this program.

For more information, visit <https://www.newcastlede.gov/DocumentCenter/View/53786/Tree-Removal-Brochure-2023> or contact Christina Bloemendaal at christina.bloemendaal@newcastlede.gov or 302-395-5639. Second contact is Erin Wisner-Coleman at erin.coleman@newcastlede.gov or 302-395-5540.



AFFORDABLE RENTAL PROPERTIES

Delaware State Housing Authority, in partnership with AffordableHousing.com provide a webpage to locate affordable rental properties. Visit <https://www.destatehousing.com/find/subsidized-rental-programs/> for a full list of tenant qualifications for this program and to enroll.

HOME REHAB LOAN

KissYourLandlordGoodbye is offering the Diamond in the Rough Rehab Loan for up to \$75,000.00 for home repairs after closing. These loans can be used for items such as, but not limited to, minor repairs, house wall painting and roof repair.

For more information, call 302-739-4263.



MOVING TO WORK PROGRAM

Delaware State Housing Authority (DSHA) is offering the Moving to Work (MTW) Program to assist Delawareans statewide with securing affordable housing. Most residents, with the exception of the elderly and disabled, are eligible to receive subsidies under these programs for a maximum of seven years while they take part in a mandatory self-sufficiency program. The MTW program has two levels, MTW Tier I (the first five years) and MTW Tier II (the final two years).

Eligible participants of this program are low-income Delawareans who agree to take the necessary steps (education, employment, income, etc.) to become independent of government-assisted housing within seven years.

For more program details, including eligibility requirements and to apply, visit <https://www.destatehousing.com/find/subsidized-rental-programs/>.

2025 HOMEBUYER'S FAIR

Delaware State Housing Authority is hosting a Homebuyer's Fair on Saturday, June 21, 2025, from 9:00 AM to 3:00 PM. This fair will be hosted at University of Delaware, Clayton Hall Conference Center, 100 David Hollowell Dr., Newark, DE. More information to come.



RECOVERY HOUSING PROGRAM

IMPACT LIFE is offering residential treatment for both men and women. Housing Program residents have access to supportive services, Wellness Educator and a Recovery Educator who incorporate step work and mindfulness to solidify the foundation of their recovery. Family reunification is supported, and the program prepares residents for healthy transitions using a three-tiered phase system of readiness.

Visit <https://impactlifetoday.org/housing-program/> for more information.



HOUSING STABILITY PROGRAM

Delaware State Housing Authority (DSHA) provides eviction assistance, financial help with past due and current rent, security deposit, and three months of future rent assistance statewide through Community Navigator Agencies. Community Navigators include:

Statewide:

- First State Community Action Agency, 19 Lambson Ln., #8, New Castle, DE 19720, 302-856-7761
- Interfaith, 613 North Washington St., Wilmington, DE 19801, 302-652-3991 ext. 100

New Castle County:

- Catholic Charities (Virtual Appointment Only), 2601 W 4th St., Wilmington, DE 19805, 302-655-9624
- Dual Generations (in-person appointments), 1100 N. Pine Street, 2nd Floor, Wilmington, DE 19801, 302-434-6960
- Housing Opportunities of Northern Delaware (HOND), 100 W. 10th St., #1001, Wilmington, DE 19801, 302-429-0794
- Metropolitan Wilmington Urban League, 100 W. 10th St., #602, Wilmington, DE 19801, 302-622-4300



DELAWARE GUIDANCE SERVICES FOR CHILDREN & YOUTH, INC.

Delaware Guidance Services for Children & Youth, Inc. is Delaware's largest provider of non-residential mental health services for children and families. Their highly-trained clinicians are ready to help children and youth who may be experiencing anxiety, depression, stress, trauma and PTSD, and other behavioral or mental health concerns. Medicaid and all major insurance providers are accepted. For more information visit www.delawareguidance.org or call one of the agency locations.

WILMINGTON
(302) 652-3948

NEWARK
(302) 455-9333

DOVER
(302) 678-3020

LEWES
(302) 645-5338

SEAFORD
(302) 262-3505

HIGHMARK REWARDS PROGRAM

You deserve a reward.

Healthy Rewards is one of your Highmark Health Options benefits. You or your child can earn rewards when you complete certain healthy activities.

To sign up and see the rewards you can earn, go online or call:
my.therapayrewards.com/hho
 1-866-469-7973

Scan to get started

Reward activities can include:

\$15 Annual well-child visit (ages 3-18)	\$10 per visit/up to 8 visits Well-baby visit series (through age 30 months)	\$10 Lead screening (up to age 24 months)
\$15 A1c test for people with diabetes	\$15 Doctor visit after giving birth (up to 84 days after delivery)	\$25 Colorectal cancer screening
\$25 Cervical cancer screening	\$15 per fill/up to 6 fills Asthma controller medicine (age 18 and younger)	\$15 Retina exam for people with diabetes
\$15 Annual wellness visit (age 20 and older)	\$25 Breast cancer screening	\$15 Doctor visit after leaving the hospital

Powered by **TheraPay**

Highmark Health Options (HMO) is an independent licensee of the Blue Cross Blue Shield of Delaware. All members of independent Blue Cross Blue Shield Plans, HMOs comply with applicable federal, state and local laws and regulations. The plan is not available in all areas. Benefits, coverages, rates, conditions, exclusions, and other plan details are subject to change without notice. Please refer to the plan documents for complete details.

OVA COMMUNITY WELLNESS EVENT

One Village Alliance (OVA) of 31 W. 31st St., in Wilmington is hosting a Community Wellness Event on Saturday, May 10, 2025, from 12:00 PM to 2:00 PM. The event will include Zumba and Yoga Workshops, Practitioners, Nutritionist and Community Resources.



FREE MENTAL HEALTH EMERGENCY SERVICES AVAILABLE FOR CHILDREN & YOUTH

The Delaware Guidance Services for Children & Youth, Inc. in partnership with the Department of Services for Children, Youth, & Their Families offers mental health emergency services to children between the ages of 3 and 17 years old in the state of Delaware. Their skilled Crisis Intervention Clinicians come to wherever you are, whenever you need it, to provide crisis support. Services are available 24 hours a day/365 days a year.

Please call 1-800-969-HELP (4357) for immediate assistance. Visit delawareguidance.org for more information.

VIBE YOUTH PROGRAMMING

IMPACT LIFE offers the Vision & Independence, Building Empowerment (V.I.B.E.) programming for youth 16 to 24 years of age struggling with Opioid Use Disorder (OUD) and Stimulant Use Disorder (STUD) case management services. Support includes workforce development, education support, housing stability, peer support and more. For more detailed information, visit <https://impactlifetoday.org/adolescent-family-services/>.

EXPUNGEMENT CLINIC & RESOURCE FAIR

ReEntry Delaware, in collaboration with the Office of Defense Services, Wilmington University, and Delaware Department of Justice are hosting The Building Bridges to Success Expungement Clinic and Community Resource Fair on Friday, May 9, 2025. The Fair is taking place at Wilmington University's Dover Campus, 3282 N. Dupont Highway, Suite A, Dover, DE, from 10:00 AM to 2:00 PM. They can only help with Delaware criminal records.

Preregistration is strongly recommended but walk-in services will be available on a first-come, first-serve basis. For any questions, contact ODS Client Services Program Coordinator Maria Clark at maria.clark@delaware.gov or 302-688-4560.



Visit https://docs.google.com/forms/d/e/1FAIpQLSd6r8oG4sBSiQFzAjud83fx5cCQ41dyRrKbOmJYS_J-kW_Qew/viewform, to register.

PRESCRIPTION MEDICINE DISPOSAL

IMPACT LIFE offers a free collection of unused, unwanted or expired medication at their Wilmington Recovery Cafe located at 810 N. Union St., in Wilmington DE. Collections take place the third Monday of the month, with the next being May 19 and June 16, 2025, from 2:00 PM to 4:00 PM. For more information on Wilmington Recovery Cafe programs and services, visit <https://wilmingtonrecoverycafe.org/>.



CLOSED CAPTION PHONE CALLS

ClearCaptions offers free closed caption service on home and mobile devices to those that qualify. Caller's words are displayed in near real-time for those with hearing loss.

For information, contact Kathleen at 267-322-2774.

CATHOLIC CHARITIES FOOD ASSISTANCE

Catholic Charities offer food assistance statewide, including a Wilmington location of 2601 West 4th Street for both their Food Cooperative and Emergency Food Assistance. Food Cooperative program helps families and individuals by providing a supplemental bag of groceries monthly. The emergency pantry provides three to four days of food for persons who are in crisis and cannot buy food.

For more information and to obtain an application, visit <https://www.ccwilm.org/basic-needs/food-assistance/>.

CPC FOOD HUB

Community Presbyterian Church's (CPC) Food Hub located at 519 Rogers Rd., New Castle, DE is open the second through fourth Saturdays from 10:00 AM to 12:00 PM. Entrance to the Food Hub is at the back of the church. Groceries are free and available for up to a week.



BCCS EMERGENCY FOOD PANTRY

Brandywine Counseling & Community Services (BCCS) Drop In Center at Lancaster Avenue Treatment Center, 2713 Lancaster Ave., Wilmington, DE. offers an emergency food bank. Hours are Monday through Friday 9:00 AM to 12:00 PM.

Additionally, individuals and families have access to two full bathrooms with showers, a computer for job searches and training, and clothes closet for adults and children.

For more information, visit <https://www.brandywinecounseling.com/wilmington-drop-in-center/>.

MOC DINING ROOMS

Ministry of Caring (MOC) Operates two Dining Rooms daily offering meals at no charge. Emmanuel Dining Room West is located at 121 North Jackson Street, Wilmington, DE and the second is Emmanuel Dining Room South, 500 Rogers Road, New Castle, DE.

For more information and hours of operation, contact, Emmanuel Dining Room Program Director, Michael Sullivan, at 302-652-3228 or msullivan@ministryofcaring.org.



NCCHS- EARLY HEAD START

New Castle County Head Start (NCCHS) are accepting applications for their free Home-Based Program. This program is open to pregnant women through three-year-olds, including children with disabilities.

Home Based Program offers weekly 90-minute visits. Educators will provide teaching strategies and track children's growth and progress based on age.

For more information and to apply, visit <https://ncchs.org/> or call 302-777-5104.

CHILDCARE COST ASSISTANCE

Catholic Charities has temporary assistance for childcare costs for eligible families in Delaware statewide. Applicants of this program must be participating in Purchase of Care or eligible for Purchase of Care. New Castle County residents call 302-655-9624 for more information to apply.

DELAMORE PLACE COMMUNITY GARDEN

Delamore Place Community Garden season will begin Saturday, May 10, 2025. The garden is located at 403 Delamore Place, Wilmington, DE. All ages are welcome for their volunteer efforts.

Volunteers assist in the west side community gardens including mowing, weed whacking, weeding, minor repairs, and beautification. Contact Billy Haviland, Parks & Open Space Manager, visit <https://www.westsidegrows.org/volunteer>.



MUSIC SCHOOL DE SUMMER CAMP

Music School Delaware is offering a week of half day camp Monday, June 23 to Friday, June 27, 2025, from 9:30 AM to 12:30 PM to try four instruments in one class. For more information, call 302-762-1132 or visit <https://musicschoolofdelaware.asapconnected.com/> for more information and to enroll. Music School Delaware has a locations in Wilmington and Milford, Delaware.

LACC BEFORE & AFTER CARE PROGRAMS

Latin American Community Center (LACC) Before and After School Program provides care to children from five to 12 years of age. Before School is 6:45 AM to 8:00 AM and After School is from dismissal to 5:30 PM. Drop-in Care for school closures are also offered. Dinner is provided at a weekly rate of \$125.00. Purchase of Care and scholarship opportunities are available. Visit <https://www.thelatincenter.org/elementary-programs>, for more information and to enroll.



CRITTER CAMP

Brandywine Valley SPCA of New Castle, DE has open registration for their summer Critter Camp to children ages seven to 12. Critter Camp includes week-long summer day camp as well as weekend sessions throughout the year. Camps feature a variety of guest speakers (virtual and in person), new animal friends, and activities.

Visit <https://bvspca.org/get-involved/for-kids#critter-camp> for more information and to enroll.

CAMP W.E.S.T. FUN-ZONE SUMMER CAMP

West End Neighborhood House (WENH) are accepting applications for their CAMP W.E.S.T. Fun-Zone Summer Camp. Camp is from June to August 2025, from 6:30 AM to 5:30 PM, for children ages five to 12 years of age at \$140.00 per week or daily fee of \$35.00. Visit <https://schools.procareconnect.com/form/869ae565-dbd5-4c66-9c98-89f1a7bc2c31>, to register. For more information, visit <https://westendnh.org/programs/youthdevelopment/childcare/>.



DOC YOUTH ACADEMY

Department of Correction (DOC), 245 McKee Road Dover, DE, is hosting a free one-week Youth Academy led by their Training Academy instructional staff. Activities such as physical fitness activities, hands-on classes, laser tag, team building exercises, and more will be offered for children 10 to 17 years of age.

The two sessions are being offered are:

- July 28 – Aug 1, 2025, 8:00 AM to 4:00 PM, for ages 10 to 13
- Aug. 4 – Aug 8, 2025, 8:00 AM to 4:00 PM, for ages 14 to 17

Application deadline is Friday, May 9, 2025. Visit https://doc.delaware.gov/assets/documents/DOC_Summer_Youth_Academy_Application.pdf, for the application. For questions and submission of completed applications, email DOC_EDC_Communicate@delaware.gov.

POLICE & PARAMEDIC SUMMER YOUTH PROGRAM

New Castle County Police are hosting a police and paramedic themed camp to allow youth between the ages of 13 and 17 to experience careers in these fields. Campers will work alongside professionals in the classroom, hands on experience and mentoring from July 7 to July 18, 2025, Monday through Friday 8:00 AM to 4:00 PM. Applications are due May 1, 2025.



For more information call 302-395-8050 or email psyouthprogram@newcastlede.gov. To apply visit, <https://docs.google.com/forms/d/e/1FAIpQLSfzoOnHLINV03Y8eqyGJwGdt2C1mNammhjywkvn7ZefY3TjmQ/viewform>.



THE LITTLE CAMPUS SUMMER CAMP

The Little Campus of Newark, DE offers Summer Camp from June 16 through August 22, 2025, from 6:30 AM to 6:00 PM for ages three to 12 years old. There is an option for six, eight, and 10-week Programs for five full days or Tuesday-Wednesday-Thursday options. For more information and to apply, visit <https://www.thelittlecampus.com/general-8>.

FAME, INC. SUMMER PROGRAM

Fame, Inc. of Wilmington, DE Summer Program is June 23 to July 31, 2025, and open for registration. The Summer Program accepts students in grades 1-12, Monday through Thursday from 8:00 AM to 3:00 PM. The first half of the day is Mathematics, Science, Computer Technology, and Communication/English skills. The second half of the day is industrial and cultural tours along with group-based engineering/STEM projects.

For more information and to apply, contact Mrs. Belcher or Mrs. Jones in the Education Department at lbelcher@fameinc.org or rjones@fameinc.org.



KIDS BOWL FREE

Kids Bowl Free is an opportunity for children from the ages of two to 15 to bowl two free games per day through October 31, 2025. No cost to register, adults are offered a discounted rate plan but not required for the free bowling offer. Bowling location in New Castle County is Main Event in the Fashion Center of Newark.

For more information and to register, visit <https://www.kidsbowlfree.com/>.

ONE STEP AT A TIME SUMMER CAMP

One Step At A Time Foundation is accepting interest forms for their 7-week summer enrichment program. To complete the interest form, visit <https://docs.google.com/forms/d/e/1FAIpQLSd6IRZr9TCe0jWlIWZ0Fm9AmxE-2zbUWjP5vrqYXA410pkDNA/viewform>.

Email Info@onestepatatimefoundation.ocm or call 302-297-8006 for information.

ALAZAR'S CO-ED YOUTH BASKETBALL CAMP

Alazar's Co-Ed Youth Basketball Camp is hosted by Sunday Breakfast Mission at no cost from Monday, June 23 to Friday, June 27, 2025, from Noon to 3:00 PM. The camp location is 110 N. Poplar St., in Wilmington where lunch is provided and prizes will be awarded. Visit <https://sundaybreakfastmission.org/what-we-do/basketball-camp> for more information and to register.

YMCA YOUTH IN GOVERNMENT

YMCA Delaware offers a Youth In Government (YIP) program for 6th to 12th graders where students would have the opportunity to model legislative and judicial experiences. Middle school students, 6th to 8th grade, have a fee of \$125.00 and High School, 9th to 12th grade, have a fee of \$325.00 with financial assistance available. Weekly meetings for this program begins in September.

Visit <https://www.ymcade.org/youth-in-government/>, for more information and to register. If you are a school interested in beginning a delegation, contact Jacelyn Parson at jparson@ymcade.org.

YMCA MODEL UN PROGRAM

YMCA Delaware offers their Model UN program that introduces students to the operation and structure of the United Nations while providing them with an opportunity to learn about world cultures and debate issues of international importance. Students will participate in conflict resolution, public speaking, and coalition building. Meetings for this programming begin in September 2025.

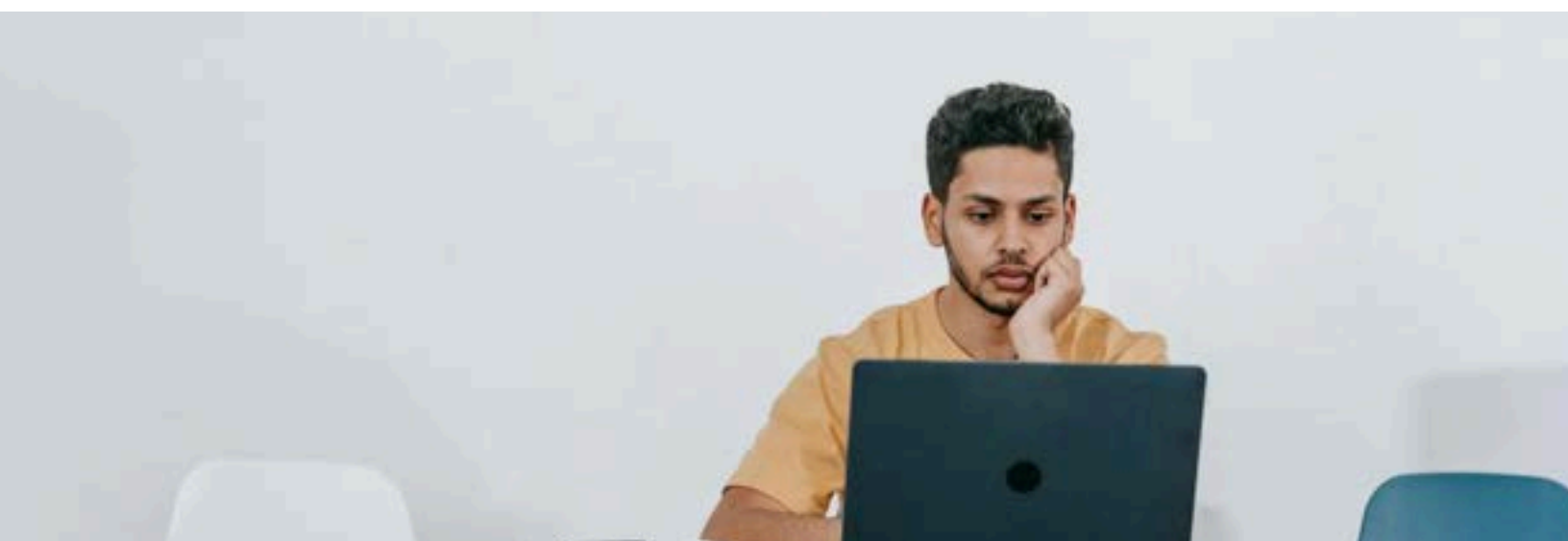
For more details and to register or express interest, visit <https://www.ymcade.org/youth-in-government/>.



WEST SIDE GROWS TOGETHER INTERNSHIPS

West Side Grows Together has two part-time internship opportunities available. Both opportunities are \$15.00 to \$17.00 per hour for 20 hours per week. The first internship is within the Community Development business area and the second is in Housing.

For more information and to apply, visit <https://www.westsidegrows.org/jobs>.



CVS STUDENT OPPORTUNITIES

CVS Health offers four Student Opportunities, Internship, Leadership Development Programs, Student Pharmacist and Clinical. Application deadlines vary based on each program. Internships for Corporate and Retail and Leadership Development are accepted September through March or until positions are filled. For job description of each opportunity and to apply, visit <https://jobs.cvshealth.com/us/en/students>.

GAUDENZIA INTERNSHIPS

Gaudenzia's local office in Delaware is the Claymont Center at 3901 Philadelphia Pike, Claymont, DE. Gaudenzia offers a multi-disciplinary internship program to help prepare students for a range of professions within the behavioral healthcare field, including:

- Business and Finance
- Communications
- Government Affairs
- Human Resources
- Information Technology
- Marketing
- Medical Residents
- Mental Health Counseling
- Nurse Practitioner
- Philanthropy
- Public Policy
- Research
- Social Work and Psychology

For more information and to apply, visit <https://www.gaudenzia.org/internships/>.

CHRISTIANACARE INTERNSHIP

ChristianaCare has a Pharmacy Student Intern opportunity available in their Newark location as part-time position. The pharmacy operates 24 hours a day. Pharmacy Student Intern to work a minimum of 24 hours per week during summer and holiday breaks, which could include days, evenings, midnights and weekends with one holiday, required annually.

For more information and to apply, visit <https://careers.christianacare.org/>.

SUMMERCOLLAB HAS OPENINGS

Summercollab of New Castle, has three summer employment opportunities and volunteer opportunities. Employment includes LitCorps AmeriCorps Member in Wilmington, Day Camp Counselor and Day Camp Instructor both in Newark.

For Job descriptions and to apply, visit <https://summercollab.org/take-action/join-our-team/>.



CORE INTERNSHIPS

CORE is an enhanced experiential learning option available to Jobs for Delaware Graduates participants entering 12th grade. The program combines in-class and off-site job readiness training through job-shadowing, internships, and/or co-ops with partnering companies throughout Delaware. Through C.O.R.E., students are exposed to real-world situations that demonstrate practical applications for academic learning.

For full internship description and to apply, visit <https://jobsdegrads.org/experiential-learning/>.

DRONE SCHOOL & INTERNSHIP

DWS Drone School participates in a national initiative to introduce teens, drones, and virtual reality technologies to create substantive jobs with a purpose to help their communities. After completion of drone and virtual reality classes, each student will receive a 6 to 12 week paid internship where they will perform inspectional services for employers around the City and State. Thereafter, they can work through the staffing and employment company, Drone Workforce Solutions.

For more information and to apply, visit <https://dwsdroneschool.com/teen-initiative/?se=about>.

WATERS INTERNSHIP

Waters of New Castle, DE has two internship positions, one in Finance and the other in Customer Education. For internship descriptions and to apply, visit <https://www.waters.com/nextgen/us/en/about-waters/careers.html>.

FBI HONORS INTERNSHIP PROGRAM SUMMER 2026

The FBI Honors Internship Program (HIP) for summer 2026 is 10-week paid internship that offers a chance to explore unique career opportunities, expand your network, and tackle today's most pressing issues head-on. Applicants from all majors are welcomed, both undergraduate and graduate, to join forces with experts in finance, technology, operations, and more. Completed applications must be submitted with all required documents by 11:59 PM ET on Friday, May 2, 2025, to be considered for the summer 2026 internship. If applying online is a hardship, request assistance by sending an email to FBI_Internship@fbi.gov with "Intern Application Hardship" in the subject line.

For a full internship description and to apply, visit <https://www.bing.com/jobs?q=internships+in+new+castle%2c+delaware&scp=0&jid=1429854080.Retro&rb=0&rc=20&L2=true&c=1&form=JOBL2S>.



LITERACY VOLUNTEERS NEEDED

Literacy Delaware are looking for Volunteer Adult Literacy Tutors with no experience required. Upcoming New Tutor Information Sessions are being offered online:

- Tuesday, May 6, 2025, 6:30 PM to 7:30 PM
- Tuesday, June 3, 2025, 1:00 PM to 2:00 PM

Visit <https://literacydelaware.org/event/tutor-training-dates>, for more information and to register for a Volunteer Information Session.

CHRISTIANACARE VOLUNTEER PROGRAMS

ChristianaCare has five Volunteer Programs, Adult, College, Summer Volunteer, Patient and Family Advisers and ChristianaCare Explorer Post 2613 for students.

For details on each volunteer group and to enroll, visit <https://christianacare.org/us/en/about-us/volunteer>.

JUNIOR VOLUNTEERS NEEDED

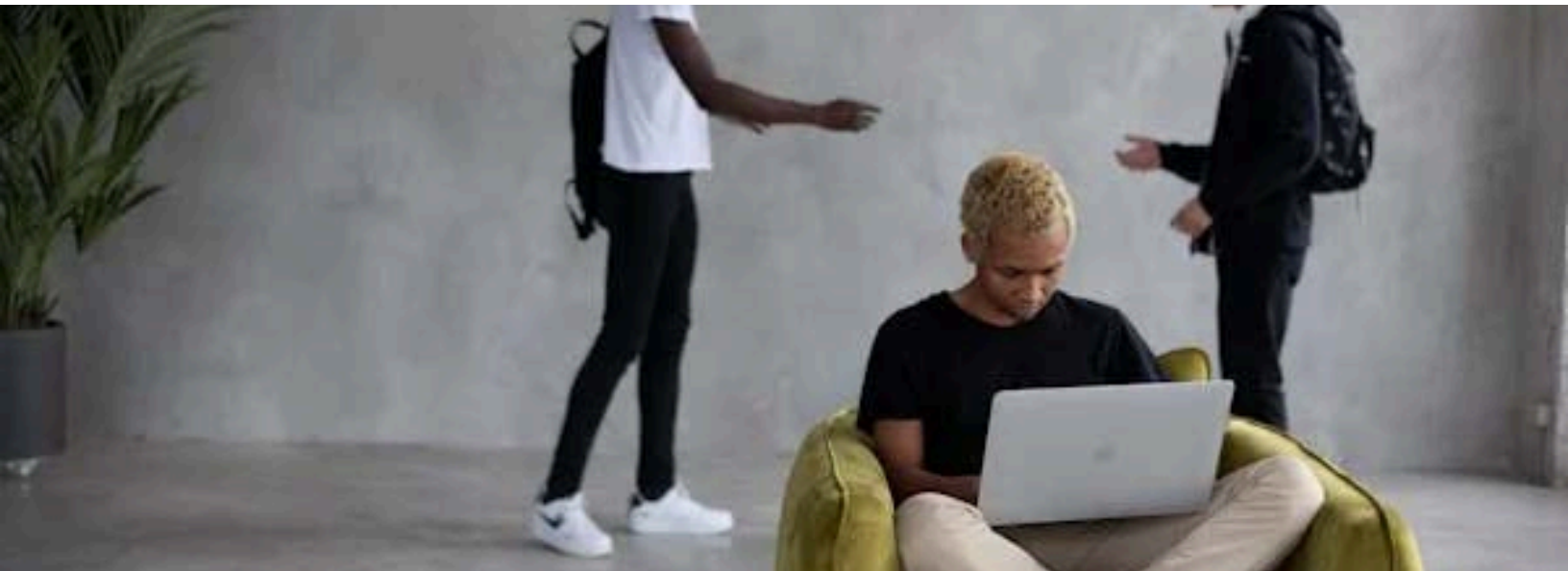
Brandywine Valley SPCA in New Castle are seeking individuals 8 to 12 years of age, to join their junior volunteer program. The youth and their chaperone or guardian (18 years+) need to submit a volunteer application and attend a volunteer orientation to start helping cats and dogs at Brandywine Valley SPCA. Junior volunteer opportunities include tasks such as socializing puppies and kittens, walking dogs, help with grooming, and read to shelter pets. Volunteers 13 years of age and older can visit without supervision.

For more information and to register, visit <https://bvspca.org/get-involved/for-kids#critter-camp>.

FREE SPAY & NEUTER FOR COMMUNITY CATS

Brandywine Valley SPCA is offering free spay and neuter, rabies and FVRCP vaccinations and ear tip clip for community cats. All offerings are hosted at a Animal Health Center.

To enroll for services, visit <https://secure.qgiv.com/for/communitycatseries2025/>.



COLLEGE UNBOUND

College Unbound located in Philadelphia, PA is an accredited college that provides an alternative approach to earning a Bachelor of Arts in Organizational Leadership & Change. Adult learners participate in an innovative, personalized, interest/project-based curriculum model. Tuition in 2024-2025 was \$459.00 per credit hour for the first 12 credit hours each semester. College Unbound's financial planning expert works with students to secure financial aid through scholarships and grants.

Visit <https://www.collegeunbound.edu/apps/pages/impact>, for more information and to apply.

DELAWARE CAREER MOBILITY APP

Delawareans have the opportunity to visit <https://www.decareermobility.org/> or download the App for the Delaware Career Mobility App to locate programs to increase skill sets or pursue a new career.

Career paths include Automotive, Transportation, Business Financial Services, Construction, Logistics, Healthcare, Information Technology and more.

For more information and to get started, visit <https://www.decareermobility.org/>.



DELAWARE SKILLS CENTER

Delaware Skills Center located at 500 Ships Landing Way, New Castle, DE offers hands-on training and classroom instruction in nine career paths. Eligibility requirements include being 18 years of age or older and having a High School diploma or Equivalency. Assistance can be provided in obtaining a GED, through the Adult Education Division of NCCVT. Career Paths include Carpentry, Certified Nursing Assistant, Commercial Driver's License, Computer Network Support, Electrical Trades, HVAC & Refrigeration, Licensed Practical Nursing, Plumbing and Welding & Fabrication.

For more information and to get started, visit https://www.deskillscenter.org/apps/pages/index.jsp?uREC_ID=3562791&type=d&pREC_ID=2401980.



HAIR ACADEMY SCHOOL OF BARBERING & BEAUTY

Hair Academy School of Barbering & Beauty, located at 160 Pencader Plaza, Newark, DE, has Barbering and Cosmetology career paths. Financial Assistance available to those that qualify. For more information, visit <https://www.hairacademysbb.edu/> email Kelsey Holveck at kholvek.hairacademy@gmail.com or call 302-738-6251.

ECHOTECH SCHOOL OF HEALTH SCIENCES AND TECHNOLOGY

Echotech offers six Healthcare Career paths at their location of 240 N. James Street, Suite B2, Newport, DE. Financial assistance is available to those that qualify. The following programs are available:

- CNA
- Clinical Medical Assistant
- Home Health Aide
- Phlebotomy
- EKG Technician
- Medical Office Administration

For information on enrollment, visit https://joblink.delaware.gov/training_institutions/446.

DEBCC INCUBATOR PROGRAM

Delaware Black Chamber of Commerce (DEBCC) Incubator, located at 321 E. 11th St., in Wilmington, has office space available for young companies. The Incubator program offers access to logistical and technical resources as well as shared office space at a convenient location. Inquires for more information for this program can be made to the email of email@DEBCC.org.

KAUFFMAN FASTTRAC BUSINESS PLANNING COURSE

WilmingtonMADE of Wilmington Alliance offers Kauffman FASTTRAC, a 12-week Business Planning course offered to those with a business idea and seeking guidance on launching. This course is hosted once per week in the evening. Participants in this course will also be offered an additional four weeks of technical assistance.

WilmingtonMADE assist local entrepreneurs through training, individualized coaching, business development, and backend support services.

For more information on WilmingtonMADE and to enroll in Kauffman FASTTRAC visit <https://www.wilmingtonmade.com/>.

UTILITY ASSISTANCE PROGRAMS

LOW-INCOME HOME ENERGY ASSISTANCE PROGRAM (LIHEAP)

Delaware has two components to LIHEAP for helping income-eligible Delawareans during the winter months with their energy assistance needs. Call 302-654-9295 for LIHEAP assistance.

CRISIS INTERVENTION PROGRAM (CIP)

Crisis intervention Program (CIP) is available year-round and can be received in addition to the seasonal fuel assistance benefits. Families participating in this program must provide proof of crisis (i.e., are presently experiencing past due utility bills, shut off notice, no money to pay or out of fuel) in addition to income eligible to qualify.

For more information and to apply for LIHEAP and CIP, contact Catholic Charities at www.ccwilm.org/basic-needs/energy-assistance or call (302) 674-1782.

SUMMER COOLING ASSISTANCE PROGRAM (SCAP)

SCAP is a flat supplemental benefit for summer cooling electric assistance. It is available to families who have previously applied for LIHEAP assistance, within the program year, aimed at offsetting the cost of electricity to cool their home during the summer months. This program also offers a single-room in-window air conditioner to households who can demonstrate a need. For more information and to apply, contact First State Community Action at 1-800-372-2240 or info@firststatecaa.org.

WEATHERIZATION ASSISTANCE PROGRAM (WAP)

WAP helps income-eligible Delaware renters and homeowners lower their energy bills through weather proofing and increasing the energy efficiency of their homes at NO COST. An assessment by a WAP professional will be completed to identify what enhancements, such as weather stripping or insulation, can be provided to reduce your energy bills.

For more information on eligibility, contact the Department of Natural Resources and Environmental Control at (302) 735-3480. To apply, call the Energy Coordinating Agency at (302) 504-6111.



WATER ASSISTANCE PROGRAM

The Delaware Division of Public Health (DPH) Low-Income Household Water Assistance Program (LIHWAP), provides assistance to eligible households to pay water and wastewater bills.

Households that qualify are eligible for:

- Reconnection of household water services
- Prevent disconnection of household water services
- Help reduce current household water bills

For more information and to obtain an application, contact the DPH's Health Systems Protection at (302) 744-4546 or LIHWAP@delaware.gov.

WHA PARTNERS WITH DSAAPD TO PROVIDE SUPPORT TO RESIDENTS

The Wilmington Housing Authority partners with the Division of Services for Aging and Adults with Physical Disabilities (DSAAPD) to expand the support and resources available to residents. DSAAPD staff members are onsite at several WHA locations to provide information and other resources to residents, including referrals, counseling options, and other resources.

DSAAPD's mission is to promote dignity, respect, and inclusion for older adults and people with disabilities. Residents can connect with DSAAPD staff members every month in the community room of the following locations:

DAY	LOCATION	TIME
TUESDAYS (May 20th & June 17th)	BAYNARD APARTMENTS (309 W. 18th Street, Wilmington, DE 19802)	11:00 AM to 1:00 PM
TUESDAYS (May 20th & June 17th)	CRESTVIEW (2700 N. Market Street, Wilmington, DE 19802)	2:00 PM to 4:00 PM
WEDNESDAYS (May 21st & June 18th)	COMPTON TOWERS (325 E. 5th Street, Wilmington, DE 19801)	11:00 AM to 1:00 PM
WEDNESDAYS (May 21st & June 18th)	HERLIHY APARTMENTS (320 E. 5th Street, Wilmington, DE 19801)	2:00 PM to 4:00 PM
THURSDAYS (May 22nd & June 19th)	PARK VIEW (1800 N. Broom Street, Wilmington, DE 19802)	11:00 AM to 1:00 PM



CENTER FOR THE CREATIVE ARTS HAS VACANCIES

Center for the Creative Arts (CCArts) are seeking a full-time Program Manager with a starting salary of \$50,000.00 and Visual Arts Teaching Artists with a salary range of \$20.00 to \$30.00 per hour as a contractor. CCArts is located in Hockessin, DE. For more information and to apply, visit <https://delawarescene.com/jobs/>.

BACK TO BASICS HAS OPENINGS

Back to Basics has employment openings statewide with 12 being in New Castle County and of those 12, seven are in Wilmington, DE. Openings include:

- Creole Interpreter (2)
- Middle School Math Tutor (2)
- Punjabi Interpreter and/or Translator (2)
- Pakistani Urdu Interpreter and/or Translator
- Spanish Interpreter (4)
- SAT Math Instructor

For job descriptions and to apply, visit <https://teachers.applytojob.com/apply>.

DOVER ART LEAGUE IS HIRING

Dover Art League is hiring a Pottery Instructor as a contractor at starting salary of \$25.00 per hour. Dover Art League is located at 21 W. Loockerman St., Dover, DE. Visit <https://delawarescene.com/jobs/>, for more information and to apply.

WCS IS RECRUITING

Wilmington Christian School (WCS) is recruiting for a Spanish teacher with a start of August 2025 and Substitute teachers immediately. WCS is located at 825 Loveville Road, Hockessin, DE.

To express interest now in potential future positions, please email Mr. Doug Haas (Upper School Principal) at dhaas@wilmingtonchristian.org, or Dr. Gwen Campbell (Lower School Principal) at gcampbell@wilmingtonchristian.org and include a cover letter identifying the kind(s) of positions in which you would be interested, as well as a brief statement of personal faith and church involvement.

For job description and steps to apply, visit <https://www.wilmingtonchristian.org/employment-opportunities.html>.



NAMI DELAWARE HAS OPENINGS

NAMI Delaware, of 2400 W. 4th St., Wilmington, DE has two full-time openings and one part-time opportunity. Property Management Technician and Director of Programs are available as full-time with Administrative Assistant as part-time.

For full job descriptions and steps to apply, visit <https://alliance.delawarenonprofit.org/careers/>.

SPECIAL OLYMPICS DELAWARE HAS A VACANCY

Special Olympics Delaware is seeking a full-time Healthy Communities Director is located at 619 S. College Ave., Newark, DE with a salary range of \$55,000.00 to \$65,000.00. For more information and steps to apply, visit <https://alliance.delawarenonprofit.org/careers/Details/director-of-healthy-communities-259568>.

DELAWARE THEATRE COMPANY IS RECRUITING

Delaware Theatre Company are recruiting for a full-time Managing Director with a salary starting at \$90,000.00, based on skills and experience. Delaware Theatre Company is located at 200 Water Street, Wilmington, DE.

For a job description and steps to apply, visit <https://alliance.delawarenonprofit.org/careers/Details/managing-director-258921>.



DANA IS HIRING

Delaware Alliance for Nonprofit Advancement (DANA) located at 100 W. 10th St., Ste 1012, Wilmington, DE has a career opportunity as a Program Director full-time. Starting salary of \$70,000.00 to \$75,000.00 based on experience.

For job description and steps to apply, visit <https://alliance.delawarenonprofit.org/careers/Details/program-director-256762>.



DCF HAS OPENINGS

Delaware Community Foundation (DCF), located at 100 W. 10th Street, Suite 115, Wilmington, DE, has two openings, Director, Community Partnerships & Capacity Building - Healthy Communities Delaware and Executive Assistant and Office Manager.

For job descriptions and to apply, visit <https://delcf.org/careers/>.

LIFE LINES HAS VACANCIES

West End Neighborhood House's Life Lines has four positions available in the Wilmington. The positions available are:

- Housing Manager
- Housing Case Manager
- Intervention Specialist
- Maintenance Worker

For a full listing of opportunities, full job descriptions and to apply, visit <https://westendnh.org/get-involved/>.

OVA IS HIRING

One Village Alliance (OVA) has three positions available in Wilmington and two in Salem, New Jersey. Opportunities in Wilmington include Community Partnership Development Specialist, Summer Camp Co-Lead and Summer Youth: Freedom Fellows.

For a full listing of opportunities, job descriptions and to apply, visit <https://www.iamthevillage.org/copy-of-get-involved1>.

NCC FARMERS MARKETS ARE RECRUITING

New Castle County (NCC) Farmers Markets are recruiting farmers and producer vendors. There are four Markets open Thursday, Friday and Saturday, starting May 1, 2025, Bellevue, Carousel Park, Glasgow Park and Middletown.

Visit <https://www.newcastlede.gov/1196/Become-a-Market-Vendor>, for more information on becoming a vendor and to apply.

SPRING COMMUNITY RESOURCE & JOB FAIR

Wednesday, May 7, 2025, Food Bank of Delaware is hosting a Spring Resources & Job Fair at 222 Lake Dr., Newark, DE. in the first-floor conference room 805, from 10:00 AM to 2:00 PM.

Visit <https://www.eventbrite.com/e/spring-community-resource-job-fair-tickets-1290258400609?aff=oddtcreator>, to register.

BMIP HAS AN OPENING

Black Mothers In Power (BMIP) has an opening for a Community Outreach Worker in their Wilmington Headquarters. Submit resume and cover letter to hello@blackmothersinpower.org.





VA CAREER & RESOURCE EXPO

Wilmington Medical VA Center is hosting a Career & Resource Expo on Wednesday, May 21, 2025, from 10:00 AM to 2:00 PM at the Rt. 9 Library & Innovation Center, 3022 New Castle Ave., in New Castle, DE. Various companies will be represented with full-time and internships available. Bring resumes for on-the-spot interviews. Federal Resume Workshop and Accessing Services Workshops will also be available.

For registration, contact Sherri Mullen, Community Employment Coordinator at Sherri.Mullen@va.gov or 302-333-9946.

FREIRE SCHOOL RECRUITMENT

Freire School's Wilmington location has 12 openings. The openings include Athletic Coach, High School Math, Science, Social Studies and Special Education Teachers. For job description and to apply, visit <https://freireschools.org/careers/job-openings/>.

DELAWARE JOB LINK

Delaware Job Link is a job board providing a multitude of employment opportunities from a variety of sectors including public, private, non-profit and government.

Whether it's a new industry of interest or furthering a career, Job Link is available any time of day and from any location where the seeker has an internet connected device.

Not only can jobs be sought, but employers can also use this website to identify potential employees for opportunities they have available through uploaded resumes. Additionally, there are free training opportunities for increasing marketability.

To learn more about this employment search tool, uploading your resumé and to begin applying for jobs today, go to <https://joblink.delaware.gov>.



WILMINGTON POLICE IS RECRUITING

Wilmington Police Department are recruiting for their 105th Wilmington Police Academy. Applications are due by 4:30 PM on May 23, 2025. Starting salary is \$67,600.00 per year, in the academy.

For more information and to apply, visit <https://cadiahealthcare.com/careers/https://www.wilmingtone.gov/government/public-safety/wilmington-police-department/join-the-wilmington-police-department/105th-wilmington-police-academy#!/>.



TECH IMPACT IS HIRING

Tech Impact are hiring eight for positions. Three positions are Hybrid in Newark and five positions are remote. Positions available:

1. Data Engineer
2. Data Scientist
3. Front End Developer - One Year Fellowship
4. Technical Account Manager
5. Tier 2 Service Desk Engineer
6. Mobile Application Developer
7. Microsoft 365 Specialist/Engineer
8. Cybersecurity Architect/Engineer

For job descriptions and to apply, visit <https://techimpact.org/careers>.



STATE OF DELAWARE HAS VACANCIES

State of Delaware has multiple Nutritionist vacancies available statewide. A Nutritionist II position is vacant at Hudson State Service Center at 501 Ogletown Rd., Newark, DE within the Public Health department. Filing deadline is May 19, 2025. For job description and to apply, visit <https://www.jobapscloud.com/DE/?Keyword=Nutritionist&Loc=&DeptNumber=&OccList=&JobType=&KeywordFullText=0&PGList=>.

DSCYF HAS OPENINGS

Delaware Department of Services for Children, Youth, and Their Families (DSCYF) has an extensive number of openings throughout their four divisions, in various departments with multiple schedules and skillsets. Opportunities include:

- Correctional Officer/Youth Rehab Food Service Specialist I
- Family Service Assistant I
- Family Crisis Therapist
- Family Service Specialist/Senior Family Service Specialist
- Physical Plant Maintenance/Trades Mechanic III
- Senior Family Service Specialist/Master Family Service Specialist

Visit <https://kids.delaware.gov/management-support-services/human-resources/employment/>, for more information and to apply.

NCC POLICE IS RECRUITING

New Castle County (NCC) Police Department are recruiting entry level, Delaware Certified Officers and Out of State Certified Officers. Signing bonus of \$25,000.00 or \$15,000.00 and starting salary of \$74,453.00. Questions, call 302-395-8140 or email Recruiter@Newcastlede.gov.

Visit <https://www.newcastlede.gov/260/Police-Careers> for job descriptions and to apply.



CLEAN DELAWARE HAS OPENINGS

Clean Delaware, Inc., a statewide organization, has openings for CDL-B Drivers. This position is responsible for pre-trip preparation, loading prep, and transporting large, portable toilets, residential/commercial septic waste, and grease.

For a job descriptions and to apply, visit <https://cleandelaware.com/hiring/>.



MATHNASIUM OF PIKE CREEK IS RECRUITING

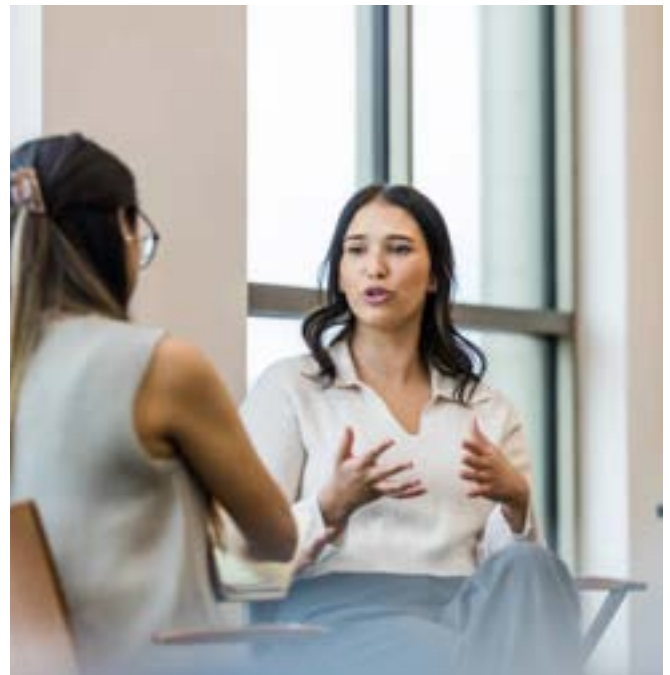
Mathnasium at 4522 Linden Hill Rd., in Wilmington (Pike Creek) is recruiting for an Assistant Center Director. The schedule is flexible 20 to 30 hours per week over Sunday through Thursday in afternoon and evenings. For questions and to apply call 302-509-2010 and pikecreek@mathnasium.com.

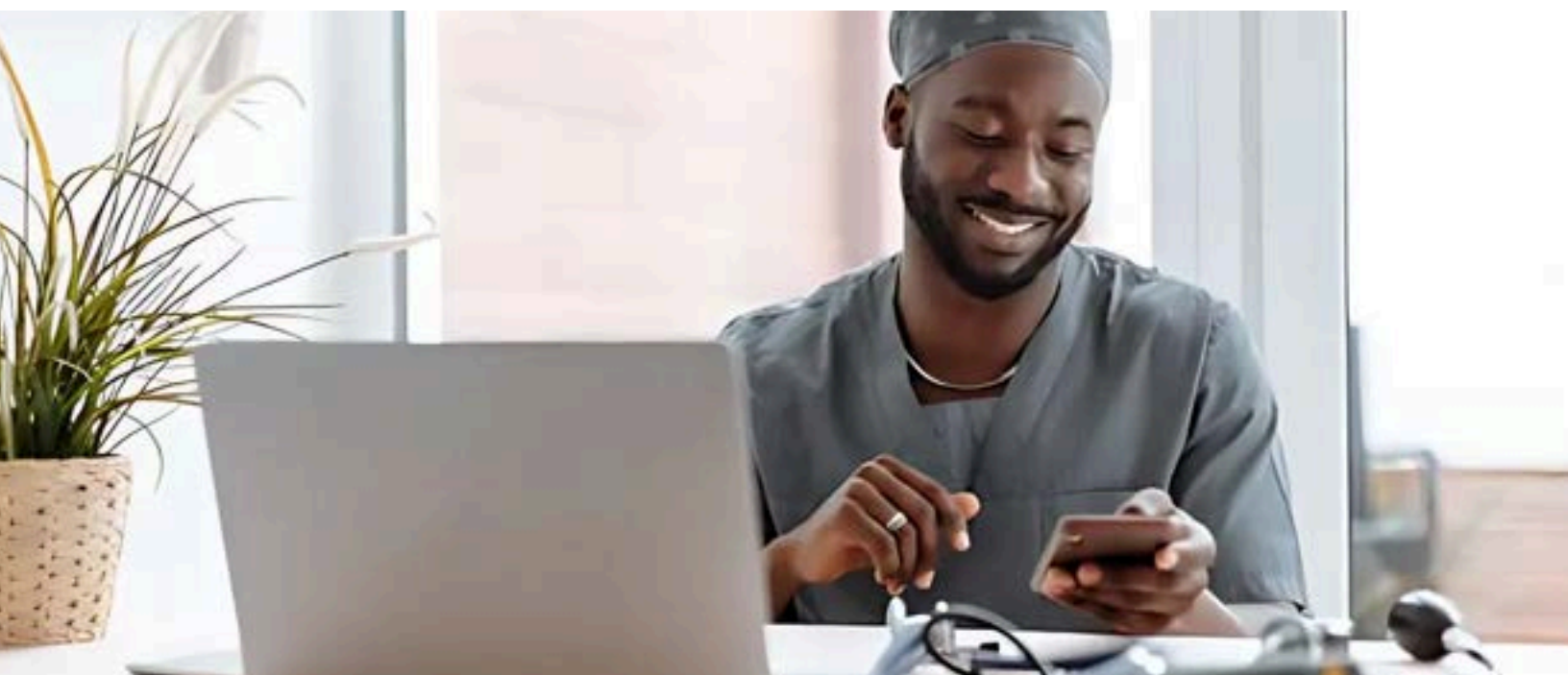
PEOPLE PLACE II IS HIRING

people Place II located in Kent County has eight employment opportunities. Career opportunities include various business areas. Below is a list of openings:

- 1.Domestic Violence Support Staff
- 2.Domestic Violence Therapist
- 3.Program Operations Coordinator
- 4.Direct-Care Staff Whatcoat Social Services
- 5.Full Time Case Manager
- 6.Part Time Visitation Specialist for Visitation Center Program
- 7.Mental Health Counselor
- 8.Licensed Therapist

Visit <https://peoplesplace2.com/employment>, for job descriptions and to apply.





PLANNED PARENTHOOD OF DE IS RECRUITING

Planned Parenthood of Delaware are recruiting for four on-site positions statewide. Two positions in Wilmington at 625 Shipley Street are VP of External Affairs and Nurse Practitioner/Physician Assistant. Visit <https://jobs.lever.co/ppde>, for full job descriptions and to apply.



LIFESTANCE HEALTH IS HIRING

LifeStance Health, of Claymont, DE, is hiring full-time hybrid schedule for a Psychiatrist (Adult or Child & Adolescent). Starting salary of \$360,000.00 with a signing bonus, no nights, weekends or hospital calls.

For more information and to apply, visit <https://careers.nhmamd.org/jobs?keywords=Lifescance+Health&place=delaware>.

TRINITY HEALTH HAS OPENINGS

Trinity Health in both Wilmington and Newark have five opportunities within their St. Francis Healthcare locations. Below are open positions:

- Nurse Practitioner, Women's Health
- Obstetrics and Gynecology Physician (2)
- Family Medicine Physician
- Family Medicine Physician - Residency Program



For more information, full job descriptions, and to apply, visit <https://careers.nhmamd.org/>.



SULLIVAN'S STEAKHOUSE IS RECRUITING

Sullivan's Steakhouse, 5525 Concord Pike, Wilmington, DE, is recruiting 10 positions. Openings include:

- Bartender
- Broiler Chef
- Cleaner/Janitorial
- Dish Machine Operator
- Food Runner/Busser
- HOH Shift Supervisor
- Host
- Line Cook
- Pantry Chef
- Prep Cook

Visit <https://www.dividendrestaurantgroupcareers.com/> to apply.

DE PARK CASINO HAS VACANCIES

Delaware Park Casino has over 30 vacancies, in Wilmington, DE, offer medical, vision, and dental Insurance, 401(k) matching, life insurance, flexible schedule and more. The vacancies include, but not limited to:

- Cook
- Food & Beverage Cashier
- Waitstaff/Cocktail Servers
- EVS Attendant
- Dishwasher
- Security Officer
- Table Games Dealer
- Casino Cage Cashier

Visit <https://delawarepark.com/careers/> for job descriptions and to apply.



COMPASS GROUP IS RECRUITING

Compass Group has culinary positions in multiple states across various culinary sectors, full and part-time and organizations. There are 46 vacancies in Delaware, and they include:

- Patient Dining Associate Dietary Aide
- Catering Attendant
- Laundry Service
- Cook
- Grill Cook

For a full list, job descriptions and to apply, visit https://careers.compassgroupcareers.com/?page_size=20&page_number=1&brands=CulinArt%20Sector&sort_by=start_date&sort_order=DESC.

BEST BUY HAS OPENINGS

Best Buy has two openings, one in Wilmington and one in Newark. Retail Sales Associate (part-time) opening is at their 4807 Concord Pike, Wilmington location and LG Home Theater Specialist (full-time) opening is at 2700 Fashion Center Blvd., Newark.

Visit <https://jobs.bestbuy.com/bby> for full job descriptions and to apply.



BATH & BODY IS RECRUITING

Bath & Body Works has 10 Positions in within their Wilmington and Newark stores. Positions are spread over four locations:

- Retail Supervisor (2)
- Retail Sales Associate (5)
- Retail Key Holder (2)
- Retail Sales Support

For a full list, job descriptions and to apply, visit <https://careers.bathandbodyworks.com/en/>.

TARGET IS HIRING

Target is hiring for 77 positions, in New Castle County, DE, with five in Wilmington. Five positions available in Wilmington are:

- On-Demand: Guest Advocate, General Merchandise, Fulfillment, Food & Beverage
- Specialty Sales Team Leader
- General Merchandise and Food
- Specialty Sales
- Guest Advocate

For full New Castle County listing, job descriptions and to apply, visit <https://corporate.target.com/careers>.

PROGRESSIVE INSURANCE HAS OPPORTUNITIES

Progressive Insurance has two remote Licensed Insurance Agent positions available in Wilmington, DE. Must have an active Property & Casualty or Personal Lines license before applying. For job descriptions and to apply, visit <https://careers.progressive.com/search/jobs/in/de-delaware/>.





WATERS IS RECRUITING

Waters, an international organization with a location in New Castle, DE, has over 25 openings for positions in various career paths and skill levels. Opportunities include:

- Operations Manufacturing Tech II
- Manufacturing Assembler I
- Sales/Service Support III
- Principal Software Engineer

For all openings in New Castle, DE, job descriptions and to apply, visit <https://dsp.delaware.gov/civilian-careers/https://careers.astrazeneca.com/>.

KLEINFELDER HAS OPPORTUNITIES

Kleinfelder of New Castle, DE, has seven career and two internship opportunities. Opportunities are:

- Civil Engineer Project Manager
- Highway Water Resources Engineer
- Senior Engineer - Highway
- Highway Design Project Engineer
- Water Resources Project Manager
- Civil Site Designer/Engineer
- Internship - Designer
- Internship - Finance

For full job descriptions and to apply, visit <https://careers-kleinfelder.icims.com/>.



DELRIN IS HIRING

Delrin, located at DuPont Experimental Station, Delrin Bldg. 308, 200 Powder Mill Road, Wilmington DE, has two full-time positions available. Senior Manager - Global Accounts Payable and Corporate Treasury Analyst, both are hybrid positions.

Visit <https://www.delrin.com/careers/> for job descriptions and to apply.

HIGHMARK HEALTH OPTIONS MEMBERS: YOU DESERVE A REWARD.



Healthy Rewards is one of your Highmark Health Options benefits. You or your child can earn rewards when you complete certain healthy activities. We'll tell you what healthy activities you qualify for based on your age, gender, and health conditions. You can earn \$10 to \$25 for each healthy activity, such as an annual wellness visit or a cervical cancer screening. Healthy activities for babies include a lead screening and baby wellness visits.

Take care of your health.

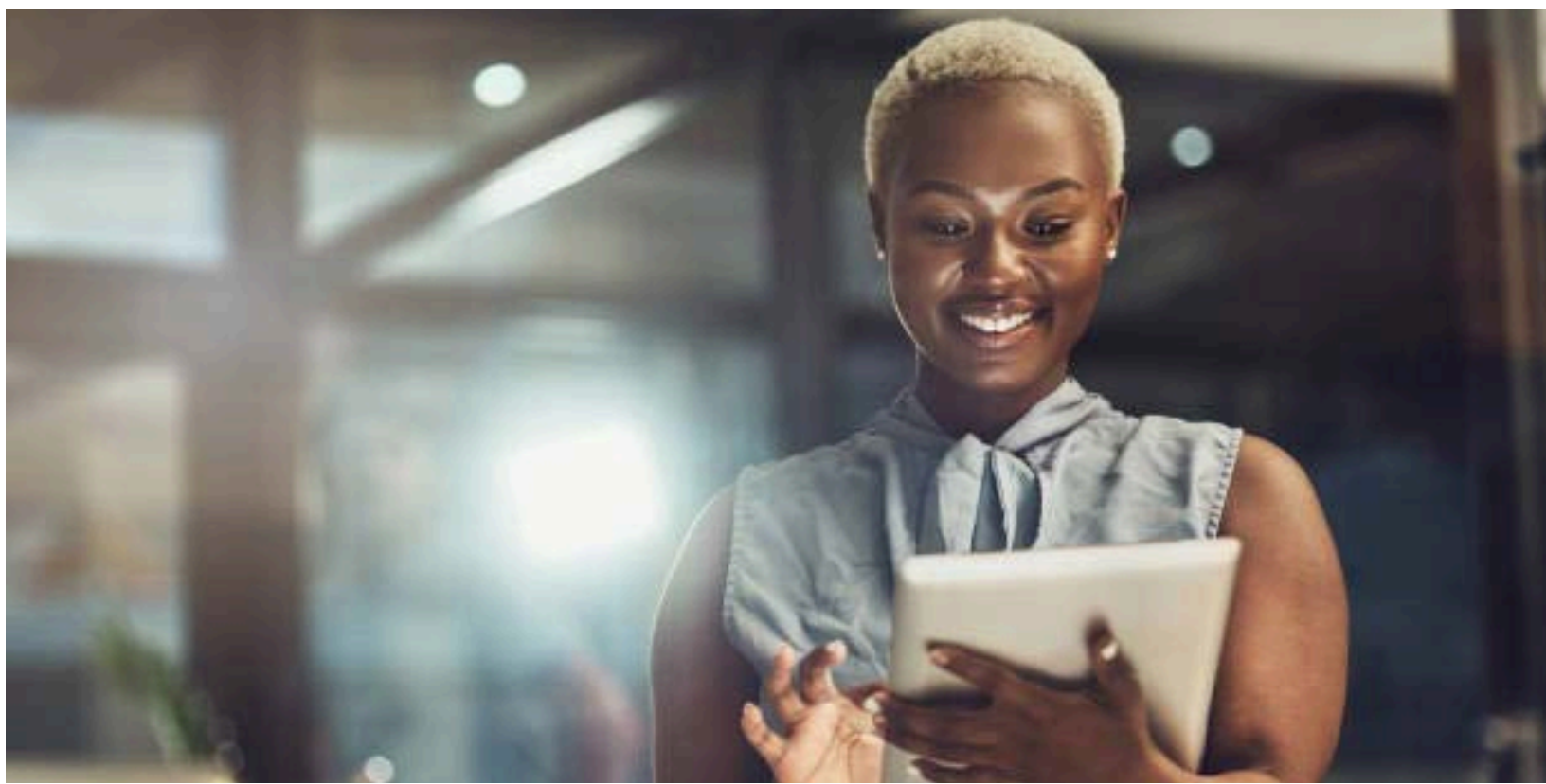
Sign up and see the rewards you can earn.

Scan, go online, or call today.

My.TheraPayRewards.com/HHO

1-866-469-7973 (TTY:711)





THE WILMINGTON HOUSING AUTHORITY IS ONLINE

The Wilmington Housing Authority posts regular announcements and events on our website as well as our Facebook, Instagram and LinkedIn pages. Scan the QR codes to visit our website (<https://whadelaware.org/>) and our social media pages.



WHA WEBSITE



WHA FACEBOOK
PAGE



WHA INSTAGRAM
PAGE



WHA LINKEDIN
PAGE

For general questions, inquiries, and other information for Wilmington Housing Authority's Executive Director, Ray Fitzgerald, please contact Azsana Wing, Confidential Executive Assistant, at AWing@whadelaware.org.